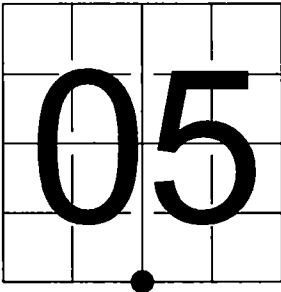


U.S. PUBLIC LAND SURVEY MONUMENT RECORD

NOTE: This form is intended and designed to fulfill all requirements of Wisconsin Administrative Code, Chapter A-E 7.08 U.S. Public Land Survey Monument Record (3) (a-i)

A-E 7.08(3)(a) Identity of corner:  
South 1/4 Corner Section 5,  
Township 34 North, Range 15 East  
of the Fourth Principal Meridian,  
Town of Wabeno, Forest County, Wisconsin

WISCRS - FOREST COUNTY  
N: 526,931.621 USft (XXX,XXX.XXX)  
E: 902,104.415 USft (XXX,XXX.XXX)  
Datum: NAD83 (2011)  
GNSS Method RTK  
GNSS Control WISCRS VRS



The coordinate value shown has been verified by the average of two or more GPS observations at a markedly different time. Coordinates shown in parenthesis are previously published values.

A-E 7.08(3)(b)

Original Surveyor: James McBride - June 16, 1859 to June 25, 1859  
Black Ash 7 - N 53° W, 24 Links, Sugar 7 - S 62° E, 28 Links

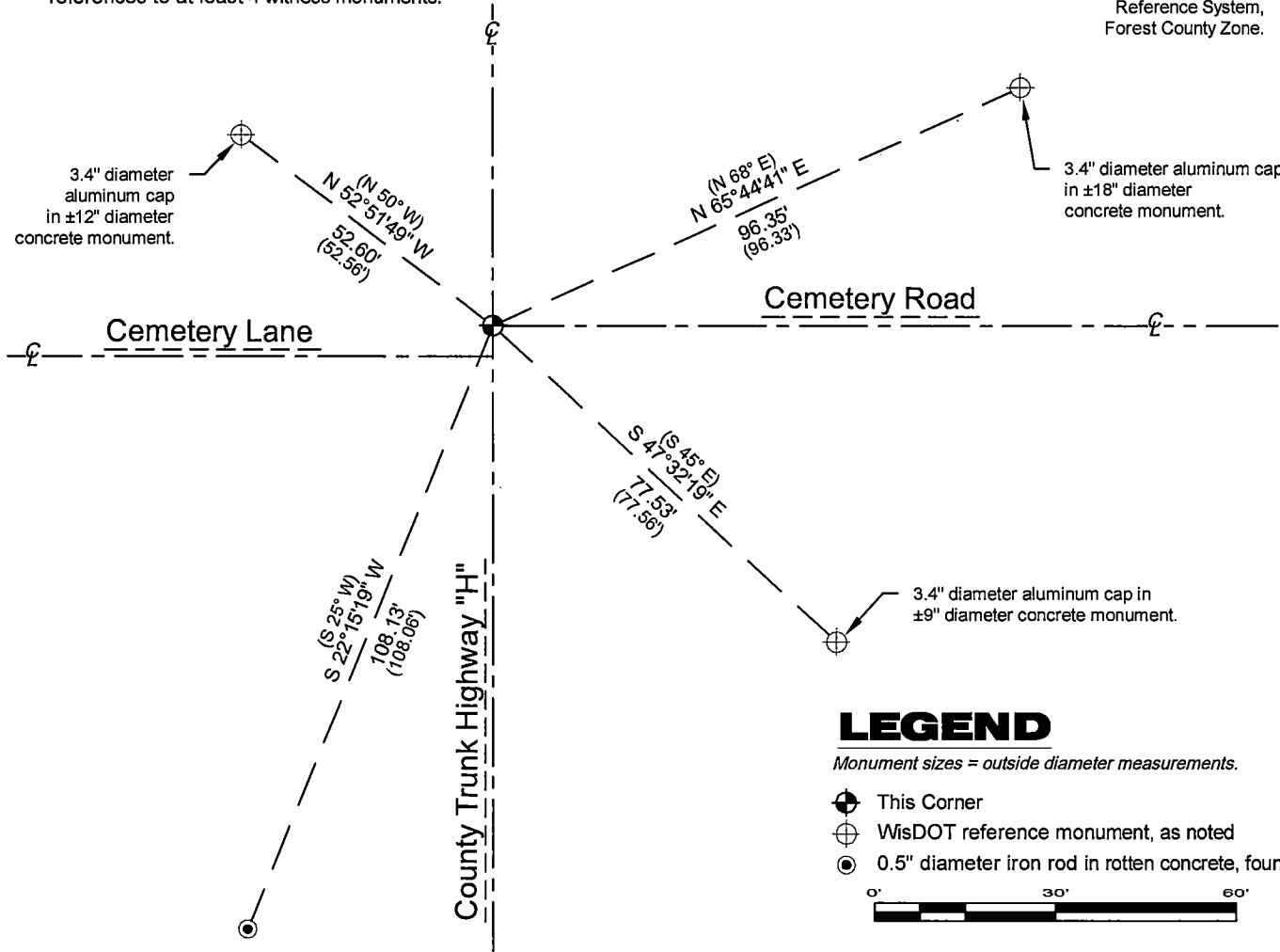
See previous U.S. Public Land Survey Monument Record - E-7- July 21, 2006 - Surveyor 2467 - Zachary J. Stevens - THENCE:

- May 28, 2009 - Surveyor 1741 - Ernest Woorster - indicates this position as "gear spike set from existing ties" on county record Map #341508-20090528.
- October 6, 2010 - Surveyor 2265 - Harry J. Smith - indicates this position as "existing Forest County monument of record" on county record Map #341508-20101006.

March 25, 2025 - I found a cotton gin spindle on the intersection of the County Trunk Highway "H" centerline and the centerline of Cemetery Road (east). The monument is ±5 feet north of the centerline of Cemetery Lane (west). I also found 4 of the reference monuments shown on the previous monument record. I established 0 new reference monuments as shown below.

A-E 7.08(3)(c)(d) Plan view of corner with references to at least 4 witness monuments.

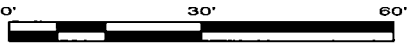
Bearings are referenced to the:  
Wisconsin County Coordinate  
Reference System,  
Forest County Zone.



LEGEND

Monument sizes = outside diameter measurements.

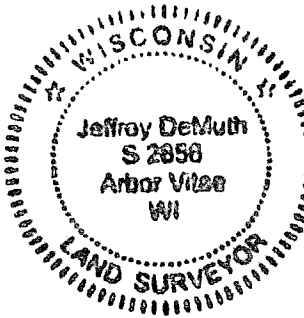
- This Corner
- ⊕ WisDOT reference monument, as noted
- ⦿ 0.5\"/>



A-E 7.08(3)(e) 1859 Surveyor set a post, 2006 Surveyor found a 3.5\"/>

A-E 7.08(3)(f) I accept this monument in good faith as a FOUND PERPETUATED LOCATION of the corner.  
A-E 7.08(3)(g)(h) This corner was not determined through lost-corner-proportionate methods.

A-E 7.08(3)(i) I, Jeffrey L. DeMuth, Professional Land Surveyor No. S-2656, hereby certify that the corner location on this record was determined by me or under my direction and control, and that this U.S. Public Land Survey Monument Record is correct and complete to the best of my knowledge, and belief.



SIGNATURE

March 28, 2025

DATE

43415050020

43415050020

E7

Document Number

191720

REGISTER'S OFFICE  
Forest County, Wis.

Received for record this 3rd day  
of August A.D., 2006 at  
8:15 o'clock A.M. and recorded  
in Vol. 10000 RESTORATIONS  
page E-7

Register of Deeds

## U.S. PUBLIC LAND SURVEY MONUMENT RECORD

(AS REQUIRED BY S. A-E 5.02, WI ADM. CODE)

HISTORY OF ORIGINAL CORNER ESTABLISHMENT AND SUBSEQUENT RESTORATIONS AND DESCRIPTION OF ANY RECORD, MONUMENT, OCCUPATIONAL, TESTIMONIAL, OR OTHER EVIDENCE CONSIDERED:

1859 - JAMES McBRIDE, SURVEYOR, SET POST

SET THE FOLLOWING WITNESSES:

BLACK ASH 7" N53°W 24 LINKS  
SUGAR MAPLE 7" S62°E 28 LINKS

1977 - CERTIFIED LAND CORNER RESTORATION DOC #112923. PAUL SMITH, SURVEYOR, S-1125, FOUND POINT OF OLD WOOD STAKE 3 FEET BELOW THE SURFACE OF COUNTY TRUNK "H" SET BY N.H. SMITH IN 1908 AT THE TIME OF STAKING THE VILLAGE OF WABENO. REPLACED STAKE WITH 3.5" ALUMINUM CAP.

SET THE FOLLOWING WITNESSES:

3/4" SPIKE 18" LONG N38°20'E 75 FEET  
1" SOLID ROD S40°E 70.10 FEET  
1" SOLID ROD S38°W 40 FEET

2005 - WISDOT PLANS 9334-02-00 SHOWS FOUND ALUMINUM MONUMENT.

CORNER WAS: (CHECK ALL THAT APPLY)

☐ RESTORED THROUGH ACCEPTANCE OF AN OBLITERATED LOCATION

☒ RESTORED THROUGH ACCEPTANCE OF A FOUND PERPETUATED LOCATION

☐ CONSIDERED A LOST CORNER AND REESTABLISHED THROUGH LOST CORNER PROPORTIONATE METHODS (INCLUDING A PLAN VIEW DRAWING SHOWING DISTANCES AND DIRECTIONS TO OTHER PUBLIC LAND SURVEY CORNERS USED FOR PROPORTIONING AND DETERMINING THE CORNER LOCATION)

☐ RESTORED TO REESTABLISHED IN A LOCATION THAT DIFFERS FROM A PREVIOUS RESTORATION OF REESTABLISHMENT (INCLUDE A PLAN VIEW DRAWING AND INDICATE WHAT WAS SET AND/OR FOUND)

DESCRIBE THE MONUMENT AND ACCESSORIES USED TO PERPETUATE THE LOCATION OF THIS CORNER. (INCLUDE A PLAN VIEW DRAWING AND INDICATE WHAT WAS SET AND/OR FOUND)

2006 - ZACHARY J. STEVENS, SURVEYOR, S-2467-008, FOUND A 3.5" ALUMINUM CAP IN CENTERLINE OF BIT.

FOUND THE FOLLOWING WITNESSES:

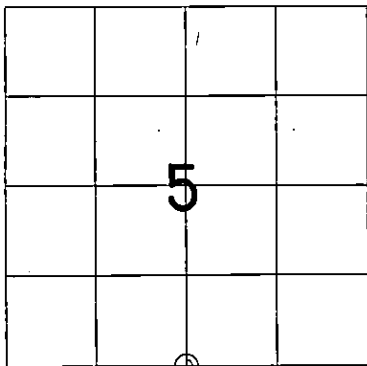
1/2" REBAR IN CONCRETE S25°W 108.06 FEET

WISDOT SET THE FOLLOWING WITNESSES:

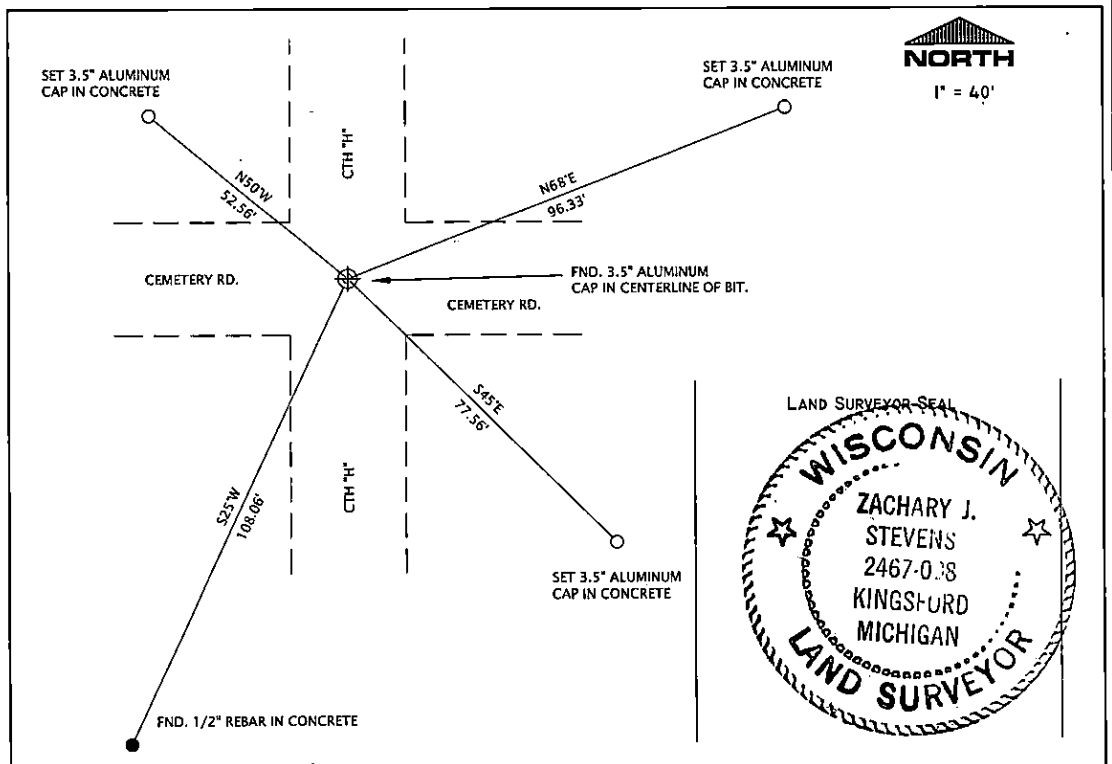
Z. STEVENS MEASURED THE FOLLOWING:

3.5" ALUMINUM CAP IN CONCRETE S45°E 77.56 FEET  
3.5" ALUMINUM CAP IN CONCRETE N50°W 52.56 FEET  
3.5" ALUMINUM CAP IN CONCRETE N68°E 96.33 FEET

THE S 1/4  
CORNER OF SECTION 5,  
T. 34 N., R. 15 E.,  
FOREST COUNTY, WISCONSIN



⊕ = LOCATION OF CORNER



I, ZACHARY J. STEVENS RLS S-2467-008

(TYPE OR PRINT NAME) CERTIFY THAT THE CORNER LOCATION SHOWN ON THIS ABOVE RECORD WAS DETERMINED BY ME OR UNDER MY DIRECTION AND CONTROL AND THAT THIS U.S. PUBLIC LAND SURVEY MONUMENT RECORD IS CORRECT AND COMPLETE TO THE BEST OF MY KNOWLEDGE AND BELIEF.

INDEX No. E-7

Zachary J. Stevens 7/31/06  
SIGNATURE DATE

43415050020

E-7

# CERTIFIED LAND CORNER RESTORATION

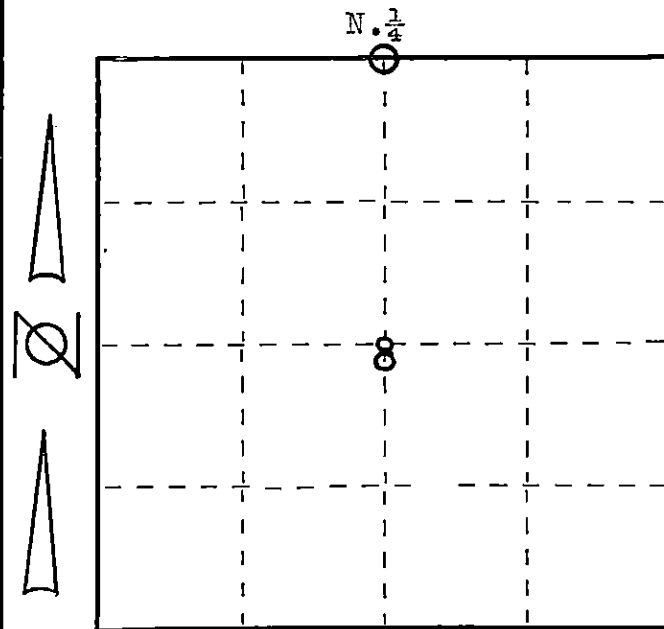
Index No. **E 7**

State of Wisconsin }  
County of FOREST } ss.

I Paul N. Smith, do hereby  
certify that on the 17 day  
of September, 1977, I found  
evidence of the North 1/4 (Quarter)  
corner of Section 8  
Township 34, North, Range  
15 East, Fourth Principal Meridian,  
as described hereon; and that from this evidence  
I established a new monument and accessories  
as described hereon to perpetuate the original  
location of this corner.

Resident witnesses:

.....  
.....  
.....



○ = Corner monument restored.

History of original corner establishment:

U. S. Dupty Surveyor set this corner  
in 1859  
Government Bearing Tree,s  
Black ash 7", North 53° West, 24 LK,s  
Sugar 7", South 62° East, 28 LK,S

Description of corner evidence found:

Found Point of old wood stake 3ft. below the surface of County Trunk H  
Set by N.H. Smith, 1908 at time of stakeing of the Village of Wabeno  
Repacceing stake set from orig. Bearing Tree,s

Description of monument and accessories I established to perpetuate the original location of this corner.

Forest County Monument  
Set Witness corner,s as follows  
North 38° 20' East 75 ft, 3/4 " spike 18 " long  
South 40° East 70.10 ft. 1" solid rod  
South 38° West 40 ft. 1" solid rod



Dated at Athelstone, Wis., this 17 day of November, 19 77.

Signature Paul N. Smith Title Land Surveyor Registration No. S-1125  
(County Surveyor, Registered Land Surveyor, or other duly authorized official)

Office of Register of Deeds, County of Forest, I hereby certify that the within  
instrument was filed in this office for record on the 9th day of December, 19 77  
at 9:45 o'clock A. M.

Eugene Statutory  
(Register of Deeds)  
By \_\_\_\_\_ Deputy

DOCUMENT NUMBER **112923**

43415050020