

CORTNEY BRITTEN CLEEREMAN
REGISTER OF DEEDS
FOREST COUNTY WI
PAGES: 2

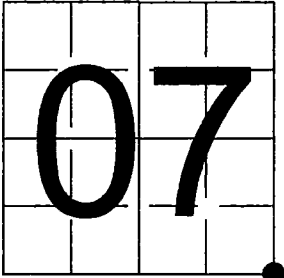
INDEX#: J5

U. S. PUBLIC LAND SURVEY MONUMENT RECORD

NOTE: This form is intended and designed to fulfill all requirements of Wisconsin Administrative Code, Chapter A-E 7.08 U.S. Public Land Survey Monument Record (3) (a-i)

A-E 7.08(3)(a) Identity of corner:
Southeast Corner Section 07,
Township 34 North, Range 15 East
of the Fourth Principal Meridian,
Town of Wabeno, Forest County,
Wisconsin

WISCRS - FOREST COUNTY
N: 521,738.784 USft (XXX,XXX.XXX)
E: 899,382.421 USft (XXX,XXX.XXX)
Datum: NAD83 (2011)
GNSS Method RTK
GNSS Control WISCORS VRS

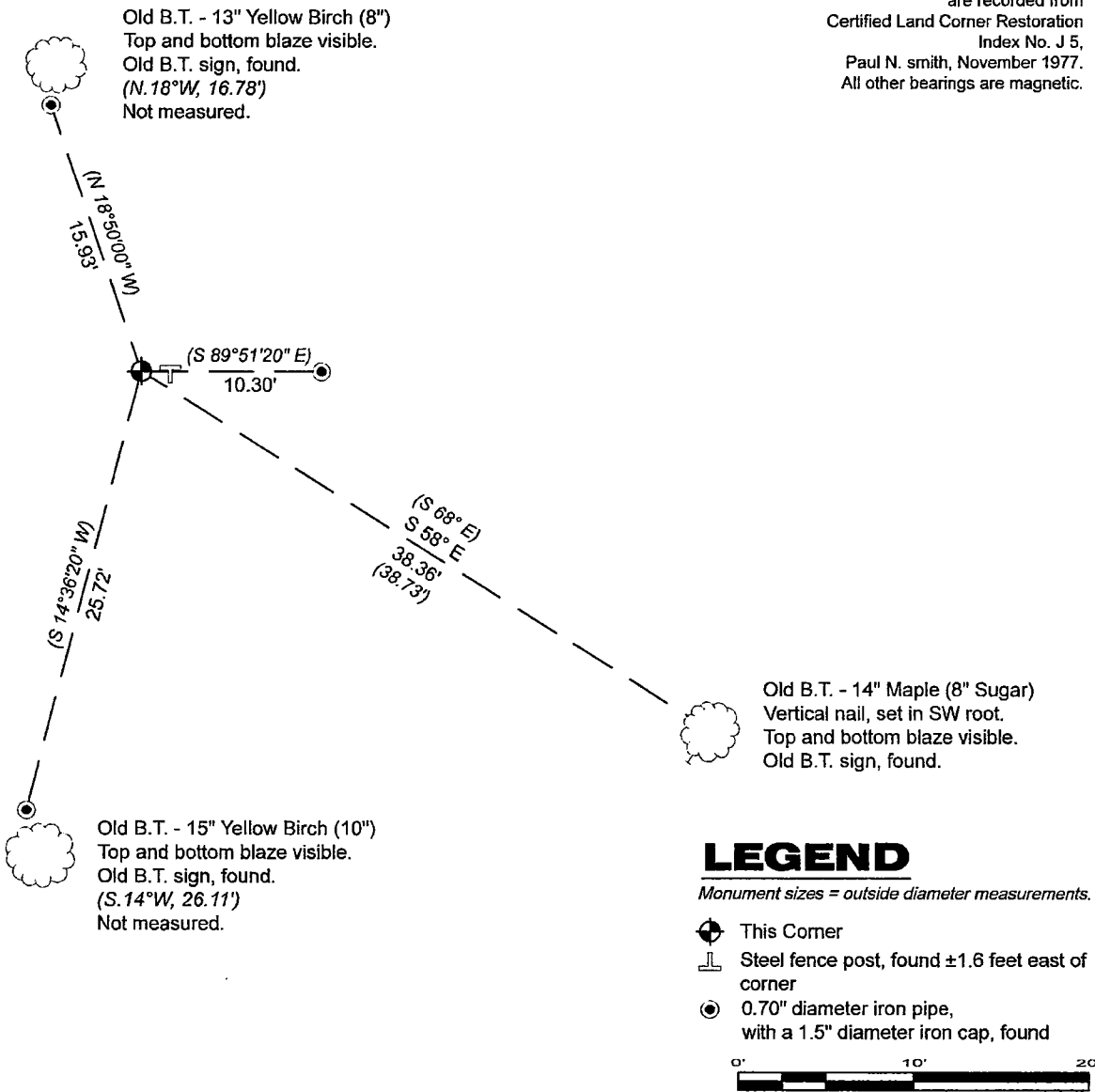


The coordinate value shown has been verified by the average of two or more GPS observations at a markedly different time. Coordinates shown in parenthesis are previously published values.

A-E 7.08(3)(b)

SEE REVERSE SIDE OF THIS SHEET FOR RECORD EVIDENCE.

A-E 7.08(3)(c)(d) Plan view of corner with references to at least 4 witness monuments.

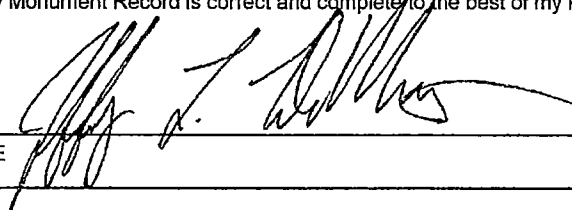


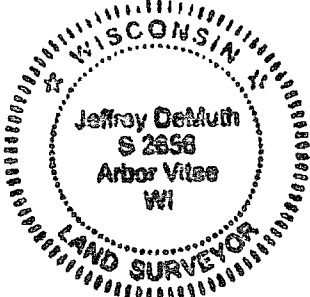
A-E 7.08(3)(e) SEE REVERSE SIDE OF THIS SHEET.

A-E 7.08(3)(f) SEE REVERSE SIDE OF THIS SHEET.

A-E 7.08(3)(g)(h) SEE REVERSE SIDE OF THIS SHEET.

A-E 7.08(3)(i) I, Jeffrey L. DeMuth, Professional Land Surveyor No. S-2656, hereby certify that the corner location on this record was determined by me or under my direction and control, and that this U.S. Public Land Survey Monument Record is correct and complete to the best of my knowledge, and belief.

SIGNATURE  May 24, 2024
DATE

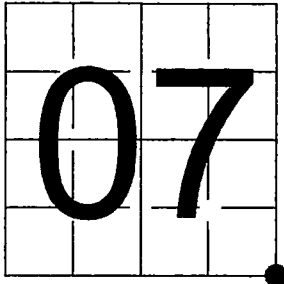


U. S. PUBLIC LAND SURVEY MONUMENT RECORD

NOTE: This form is intended and designed to fulfill all requirements of Wisconsin Administrative Code, Chapter A-E 7.08 U.S. Public Land Survey Monument Record (3) (a-i)

A-E 7.08(3)(a) Identity of corner:
Southeast Corner Section 07,
Township 34 North, Range 15 East
of the Fourth Principal Meridian,
Town of Wabeno, Forest County,
Wisconsin

WISCRS - FOREST COUNTY
N: 521,738.784 USft (XXX,XXX.XXX)
E: 899,382.421 USft (XXX,XXX.XXX)
Datum: NAD83 (2011)
GNSS Method RTK
GNSS Control WISCORS VRS



The coordinate value shown has been verified by the average of two or more GPS observations at a markedly different time. Coordinates shown in parenthesis are previously published values.

A-E 7.08(3)(b)

Original Surveyor: James McBride - June 16, 1859 to June 25, 1859
Birch 24 - N 64° W, 6 Links, Tamarac 10 - N 41° E, 14 Links, Birch 12 - S 85° E, 45 Links, Birch 36 - S 64° W, 61 Links

See previous U.S. Public Land Survey Monument Record - J5 - February 19, 1986 - Surveyor 1558 - Milo E. Stefan - THENCE:

- November 10, 2000 - Surveyor 2265 - Harry J. Smith - indicates this position as "existing Forest County aluminum monument" on county record Map #341518-20001110.
- May 17, 2002 - Surveyor 2197 - Michael A. Trembl - indicates this position as "2 1/2" aluminum mon. fd." on county record Map #341507-20020517.
- January 27, 2003 - Surveyor 2197 - Michael A. Trembl - indicates this position as "existing 2" aluminum pipe monument" on county record Map #341518-20030127.
- September 14, 2004 - Surveyor 2197 - Michael A. Trembl - indicates this position as "existing 2" aluminum pipe monument" on county record Map #341508-20040914.
- September 20, 2007 - Surveyor 2265 - Harry J. Smith - indicates this position as "existing Forest County monument of record" on county record Map #341507-20070920.
- December 5, 2007 - Surveyor 2197 - Michael A. Trembl - indicates this position as "existing 2" aluminum pipe monument" on county record Map #341507-20071205.
- December 13, 2007 - Surveyor 2265 - Harry J. Smith - indicates this position as "existing Forest County monument of record" on county record Map #341507-20071213.
- May 11, 2009 - Surveyor 2265 - Harry J. Smith - indicates this position as "existing Forest County monument" on county record Map #341508-20090511.
- June 26, 2012 - Surveyor 2439 - Charles L. Oleinik - indicates this position as "found USPLS corner monument" on county record Map #341507-20120626.
- August 03, 2012 - Surveyor 2439 - Charles L. Oleinik - indicates this position as "found USPLS corner monument" on county record Map #341508-20120803.
- December 13, 2017 - Surveyor 809-8 - Micheal S. Hess - indicates this position as "Forest County aluminum monument" on county record Map #341507-20171213.
- December 28, 2017 - Surveyor 809-8 - Micheal S. Hess - indicates this position as "existing Forest County aluminum monument" on county record Map #341508-201712128.
- January 03, 2019 - Surveyor 809-8 - Micheal S. Hess - indicates this position as "Forest County aluminum monument" on county record Map #341507-20190103.
- April 24, 2021 - Surveyor 3127 - James E. Anderson - indicates this position as "Forest County alum.mon." on county record Map #341518-20210424.
- November 1, 2021 - Surveyor 3009 - Jordan G. Brost - indicates this position as "aluminum monument found" on county record Map #341508-20210315.

May 23, 2024 - I found a 2.25" diameter aluminum pipe with a 3.25" diameter aluminum cap (not stamped). The monument is ±175 feet west from the end of Tower Road and extends ±15" above grade.
I also found 3 of Stefan's bearing trees, and 3 of Smith's iron pipes.
I established 0 new reference monuments as shown below.

A-E 7.08(3)(c)(d) Plan view of corner with references to at least 4 witness monuments.

SEE REVERSE SIDE OF THIS SHEET FOR PLAN VIEW.

A-E 7.08(3)(e) 1859 Surveyor set a post, 1977 Surveyor set a Forest County monument, subsequent surveyors found the same as did I in 2024.

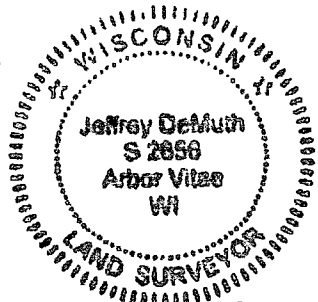
A-E 7.08(3)(f) I accept this monument in good faith as a FOUND PERPETUATED LOCATION of the corner.
A-E 7.08(3)(g)(h) This corner was not determined through lost-corner-proportionate methods.

A-E 7.08(3)(i) I, Jeffrey L. DeMuth, Professional Land Surveyor No. S-2656, hereby certify that the corner location on this record was determined by me or under my direction and control, and that this U.S. Public Land Survey Monument Record is correct and complete to the best of my knowledge, and belief.

SIGNATURE

May 24, 2024

DATE



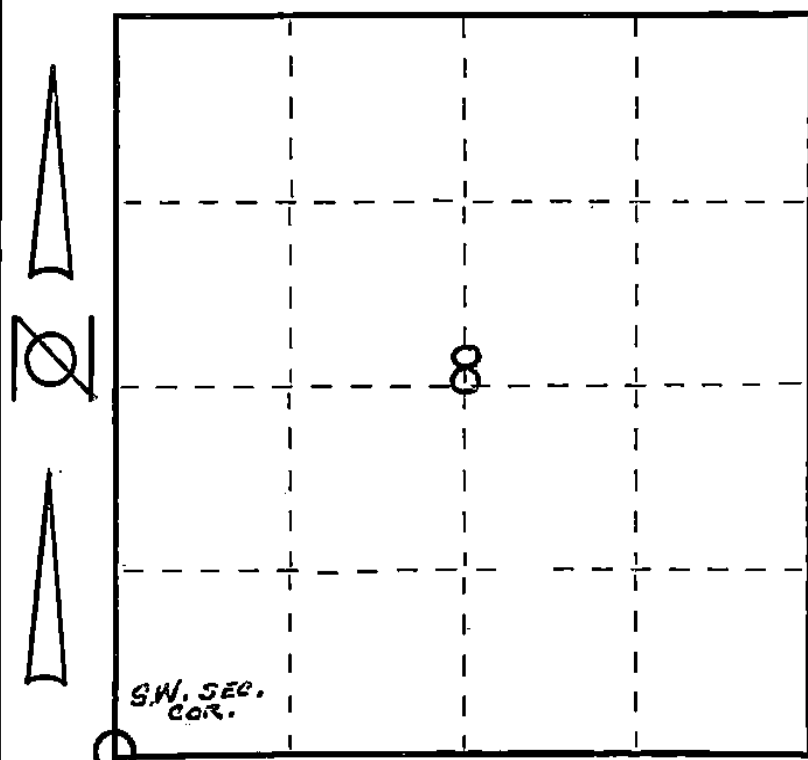
CERTIFIED LAND CORNER RESTORATION

Index No. **5**

State of Wisconsin }
County of Forest } ss.

I Paul N. Smith R.L.S. do hereby
certify that on the 17 day
of September, 1977, I found
evidence of the South WEST Section
corner of Section 8
Township 34, North, Range
15 East, Fourth Principal Meridian,
as described hereon; and that from this evidence
I established a new monument and accessories
as described hereon to perpetuate the original
location of this corner.

Resident witnesses:



○ = Corner monument restored.

History of original corner establishment:
Set by U.S. Dupty Surveyor 1859
Government Bearing Tree,s
Birch 24" N. 64° W. 6 lks
Ironwood 10" N. 41° E. 14 lks
Birch 12" S. 85° E. 45 lks
Birch 36" S. 64° W. 61 lks

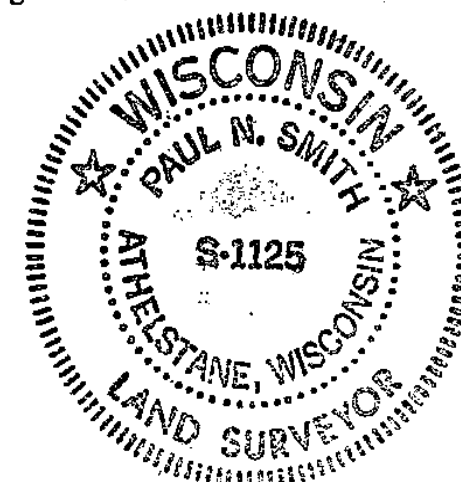
Description of corner evidence found:

Found point of wood stake set by N.H. Smith, 1906 ; Repaceing Stake
Set 4 year,s, before that Year.

point of origional stake dug up by O. N. Smith at same location 1908

Description of monument and accessories I established to perpetuate the original location of this corner.

Set Forest County Monument
Wit. corner,s as follow,s
N. 18°50' W. 15.93 ft. 1" iron pipe
S. 14°36'20" W. 25.72 ft. 1" iron
S 89°51'20" E. 10.30 ft. 1" iron



Dated at ATHELSTANE, Wis., this 8 day of NOVEMBER, 1977.

Signature Paul N. Smith Title Land Surveyor Registration No S-1125
(County Surveyor, Registered Land Surveyor, or other duly authorized official)

Office of Register of Deeds, County of Forest, I hereby certify that the within
instrument was filed in this office for record on the 9th day of December, 1977
at 9:45 o'clock A. M.

Eugene Staszny
(Register of Deeds)
By _____ Deputy

DOCUMENT NUMBER - **112924**

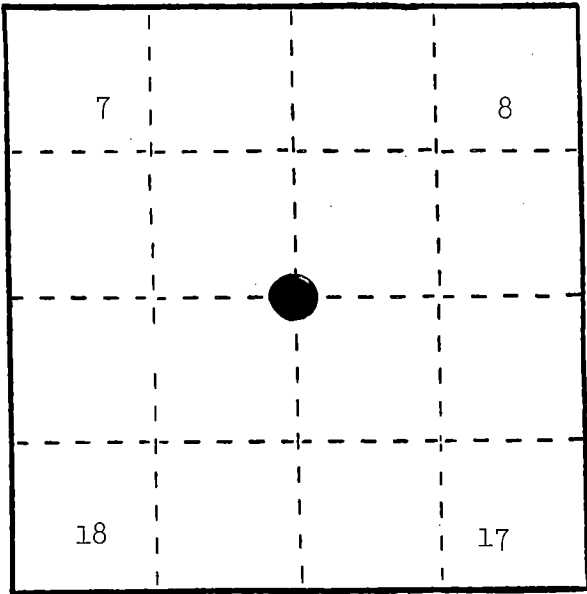
43415070000

U. S. PUBLIC LAND SURVEY MONUMENT RECORD

INSTRUCTIONS: This record shall show the location of the corner and shall include all of the following nine elements (a through i).

- (a) Identify the corner by reference to the U.S. public land survey system.
- = Corner monument restored.

Section corner to Sections 7, 8, 17, and 18, T.34N., R.15E.



REGISTER'S OFFICE
Forest County, Wis.
Received for record this 14th day
of March A.D. 1986 at
10:25 o'clock A.M. and recorded
in Vol. CORNER RESTORATIONS
page J-5
Paul Aschenbrenner
Register of Deeds

- (b) Describe any record evidence, monument evidence, occupational evidence, testimonial evidence or any other material evidence you considered, and whether the monument was found or placed.

June, 1859, James McBride placed a post at 80.00 chains with the following BTs: Ironwood, 10", N.41°E., 14 links; Birch, 12", S.85°E., 45 links; Birch, 36", S.64°W., 61 links; Birch, 24", N.64°W., 6 links.

In 1906, N. H. Smith found corner. In 1908, O. N. Smith found point of original stake.

May 26, 1967, Resvick and Cochrane found iron pipe with old scribed post.

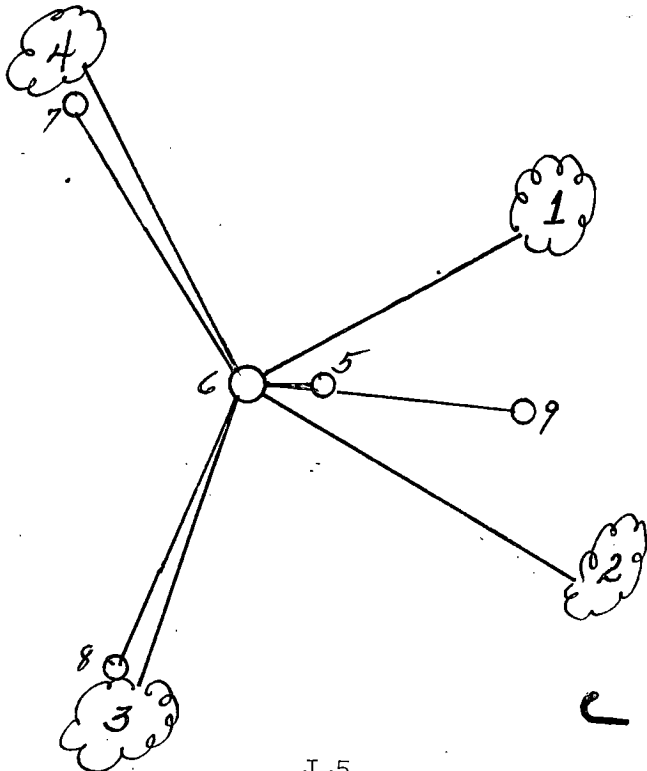
September 17, 1977, Paul Smith placed a county monument in place of iron pipe with 1" iron pipe, N.18°50'W., 15.93 feet; 1" iron pipe, S.14°36'20"W., 25.72 feet; 1" iron pipe, S.89°51'20"E.

Milo Stefan accepted county monument and placed bearing trees.

- (c) In the plan view drawing below, provide reference ties to at least 4 witness monuments, or, if the location is within a municipality, to at least 2 witness monuments. (Witness monuments shall be made of concrete, natural stone, iron or other equally durable material.) Describe witness monuments.

- (d) Show a plan view drawing depicting the relevant monuments and reference ties which is sufficient in detail to enable accurate relocation of the corner monument if the corner monument is disturbed. Indicate north.

1. Basswood, 10", N.56°E., 32.85 feet
2. Sugar Maple, 8", S.68°E., 38.73 feet
3. Yellow Birch, 10", S.14°W., 26.11 feet
4. Yellow Birch, 8", N.18°W., 16.78 feet
5. Steel Sign Post, East, 1.6 foot
6. County Monument
7. 1" Iron Pipe--Smith (1977)
8. 1" Iron Pipe--Smith (1977)
9. 1" Iron Pipe--Smith (1977)



(e) Describe any material discrepancy between the location of the corner as restored or reestablished and the location of that corner as previously restored or reestablished by distance and direction. Show the discrepancy on the plan view drawing under (d), above. Show the distances between the corner as previously restored or reestablished and (1) the corner as restored or reestablished, and (2) to at least 2 of the witness monuments shown on the drawing in (d), above.

(f) Was the corner restored through acceptance of (1) an obliterated evidence location, or, (2) a found perpetuated location?

(2) a found perpetuated location.

(g&h) Was the corner reestablished through lost corner proportionate methods? If so, show the method, including the directions and distances to other public land survey corners used as evidence or used for proportioning in determining the corner location?

(i) I, Milo E. Stefan
(type or print name) certify that the corner location shown on this record was determined by me or under my direction and control and that this U.S. Public Land Survey Monument Record is correct and complete to the best of my knowledge and belief.

Milo E. Stefan
Signature

2/19/86
Date

