

CORTNEY BRITTEN CLEEREMAN
REGISTER OF DEEDS
FOREST COUNTY WI
PAGES: 2

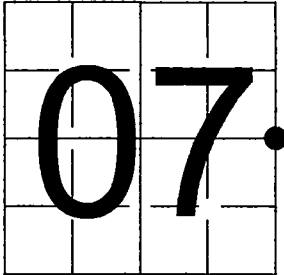
INDEX#: G5

U. S. PUBLIC LAND SURVEY MONUMENT RECORD

NOTE: This form is intended and designed to fulfill all requirements of Wisconsin Administrative Code, Chapter A-E 7.08 U.S. Public Land Survey Monument Record (3) (a-i)

A-E 7.08(3)(a) Identity of corner:
East 1/4 Corner Section 07,
Township 34 North, Range 15 East
of the Fourth Principal Meridian,
Town of Wabeno, Forest County,
Wisconsin

WISCORS - FOREST COUNTY
N: 524,361.409 USft (XXX,XXX.XXX)
E: 899,422.881 USft (XXX,XXX.XXX)
Datum: NAD83 (2011)
GNSS Method RTK
GNSS Control WISCORS VRS



The coordinate value shown has been verified by the average of two or more GPS observations at a markedly different time. Coordinates shown in parenthesis are previously published values.

A-E 7.08(3)(b)

Original Surveyor: James McBride - June 16, 1859 to June 25, 1859
Elm 10 - S 41° E, 17 Links, Tamarac 6 - N 36° W, 21 Links

See previous Certified Land Corner Restoration - G5 - April 30, 1976 - Surveyor 1125 - Paul N. Smith - THENCE:

- 1982 - Surveyor 1558 - Milo E. Stefan - indicates this position as "3" Forest County aluminum monument." on county record Map #341507-19820000.
- April 18, & May 3, 2000 - Surveyor 1795 - Devon Vanden Heuvel - indicates this position as "existing countymonument- cap has been broken off" on county record Map #341507-20000418 & #341507-20000503.
- May 17, 2002 - Surveyor 2197 - Michael A. Tremel - indicates this position as "2 1/2" aluminum mon. fd." on county record Map #341507-20020517.
- September 14, 2004 - Surveyor 2197 - Michael A. Tremel - indicates this position as "existing railroad spike" on county record Map #341508-20040914.
- November 26, 2004 - Surveyor 2197 - Michael A. Tremel - indicates this position as "existing railroad spike" on county record Map #341507-20041126.
- May 31, 2006 - Surveyor 2333 - Craig A. Keach- indicates this position as "county monument" on county record Map #341507-20060531.
- September 20, 2007 - Surveyor 2265 - Harry J. Smith - indicates this position as "existing Forest County monument of record" on county record Map #341507-20070920.
- December 13, 2007 - Surveyor 2265 - Harry J. Smith - indicates this position as "existing Forest County monument of record" on county record Map #341507-20071213.
- March 24, 2015 - Surveyor 2729 - Gregory S. Maines - indicates this position as "Forest County alum. monument found" on county record Map #341507-20150324.
- December 28, 2017 - Surveyor 809-8 - Micheal S. Hess - indicates this position as "2" I.P." on county record Map #341508-20171228.
- November 1, 2021 - Surveyor 3009 - Jordan G. Brost - indicates this position as "railroad spike found" on county record Map #341508-20210315.

May 23, 2024 - I found a 2.25" diameter aluminum pipe with its cap broken off. The monument is ±10 feet west of Fairview Avenue centerline, and is flush with the road grade. I also found 1 of Smith's bearing trees, dead and standing.
I established 4 new reference monuments as shown below.

A-E 7.08(3)(c)(d) Plan view of corner with references to at least 4 witness monuments.

SEE REVERSE SIDE OF THIS SHEET FOR PLAN VIEW.

A-E 7.08(3)(e) 1859 Surveyor set a post, 1976 Surveyor set a Forest County monument, subsequent surveyors found the same as did I in 2024.

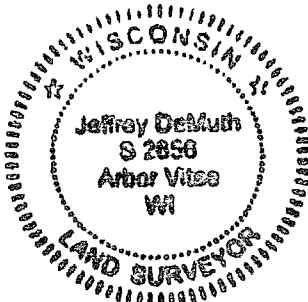
A-E 7.08(3)(f) I accept this monument in good faith as a FOUND PERPETUATED LOCATION of the corner.
A-E 7.08(3)(g)(h) This corner was not determined through lost-corner-proportionate methods.

A-E 7.08(3)(i) I, Jeffrey L. DeMuth, Professional Land Surveyor No. S-2656, hereby certify that the corner location on this record was determined by me or under my direction and control, and that this U.S. Public Land Survey Monument Record is correct and complete to the best of my knowledge, and belief.

SIGNATURE

May 24, 2024

DATE

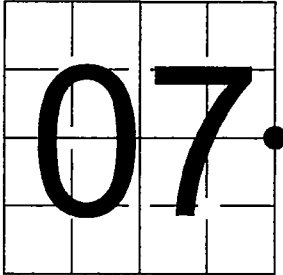


U. S. PUBLIC LAND SURVEY MONUMENT RECORD

NOTE: This form is intended and designed to fulfill all requirements of Wisconsin Administrative Code, Chapter A-E 7.08 U.S. Public Land Survey Monument Record (3) (a-i)

A-E 7.08(3)(a) Identity of corner:
East 1/4 Corner Section 07,
Township 34 North, Range 15 East
of the Fourth Principal Meridian,
Town of Wabeno, Forest County,
Wisconsin

WISCRS - FOREST COUNTY
N: 524,361.409 USft (XXX,XXX.XXX)
E: 899,422.881 USft (XXX,XXX.XXX)
Datum: NAD83 (2011)
GNSS Method RTK
GNSS Control WISCRS VRS

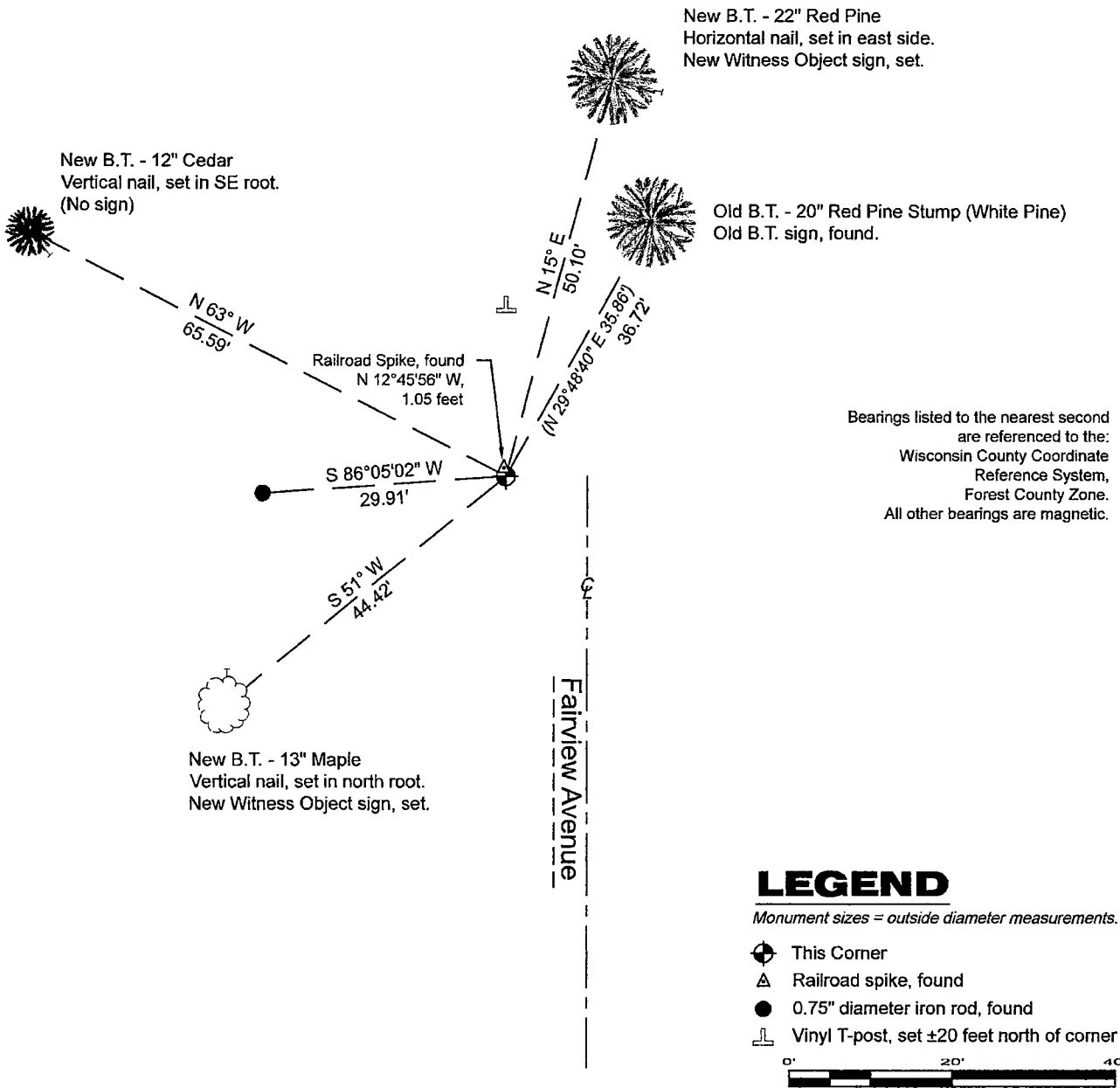


The coordinate value shown has been verified by the average of two or more GPS observations at a markedly different time. Coordinates shown in parenthesis are previously published values.

A-E 7.08(3)(b)

SEE REVERSE SIDE OF THIS SHEET FOR RECORD EVIDENCE.

A-E 7.08(3)(c)(d) Plan view of corner with references to at least 4 witness monuments.



LEGEND

Monument sizes = outside diameter measurements.

- This Corner
- Railroad spike, found
- 0.75" diameter iron rod, found
- Vinyl T-post, set ±20 feet north of corner

A-E 7.08(3)(e) SEE REVERSE SIDE OF THIS SHEET.

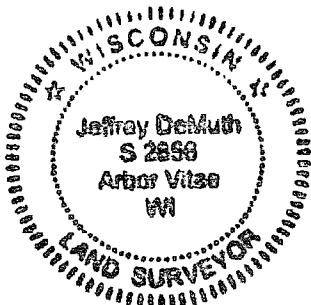
A-E 7.08(3)(f) SEE REVERSE SIDE OF THIS SHEET.

A-E 7.08(3)(g)(h) SEE REVERSE SIDE OF THIS SHEET.

A-E 7.08(3)(i) I, Jeffrey L. DeMuth, Professional Land Surveyor No. S-2656, hereby certify that the corner location on this record was determined by me or under my direction and control, and that this U.S. Public Land Survey Monument Record is correct and complete to the best of my knowledge, and belief.

SIGNATURE

May 24, 2024
DATE



Document Number

177947

U.S. PUBLIC LAND SURVEY MONUMENT RECORD

(As Required by WI Adm. Code)

History of original corner establishment and subsequent restorations and descriptions of any record, monument, occupational, testimonial or other evidence considered:

- 1859 - James McBride, set original corner post and made the following B.T.'s:
Elm, 10", S 41° E, 17 lks., 11.22 feet; Ironwood, 6", N 36° W, 24 lks., 15.84 feet.
- 1976 - Paul Smith found a 2" iron pipe set by Public Service Survey for gas line.
Said 2" iron pipe checked with plat corners on original Wabeno Plats.
Set a Forest County Aluminum monument to mark the corner.
- 1982 - Milo Stefan, U.S.F.S. Surveyor, found 1/4 corner marked by a Forest County Aluminum monument and made the following new bearing trees and bearing objects:
Red Pine, 22", N 33° E, 36.81 feet Boulder, 8'x8'x6', S 45° W, 50.89 feet
Boulder, 4'x4'x3', S 35° E, 64.18 feet Sugar, 12", S 67° W, 77.56 feet
- 2002 - I restored 1/4 corner from Stefan's bearing trees and one bearing object, The Forest County monument had been disturbed during road work. I drove a railroad spike in the asphalt surface for the 1/4 corner and set a 2" dia. aluminum reference monument.

Corner was: (Check All That Apply)

- ☐ Restored through acceptance of an obliterated evidence location.
- ☒ Restored through acceptance of a found perpetuated location.
- ☐ Considered a lost corner and reestablished through lost corner proportionate methods (include a plan view drawing showing distances and directions to other Public Land Survey Corners used for proportioning and determining the corner location).
- ☐ Restored or reestablished in a location that differs from a previous restoration or reestablishment (include a plan view drawing and indicate what was set and/or found).

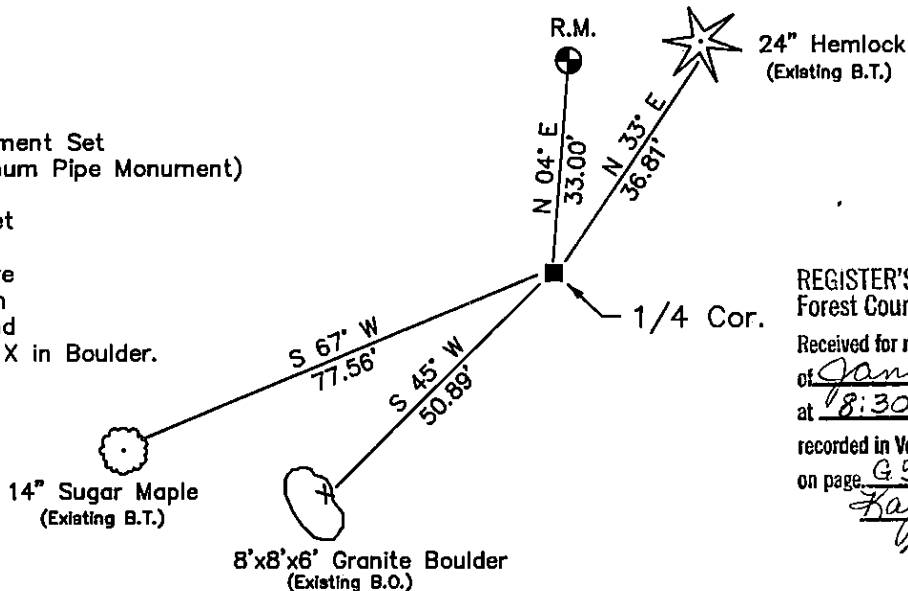
Describe the monument and accessories used to perpetuate the location of this corner (include a plan view drawing and indicate what was set and/or found).

LEGEND:

⊕ Reference Monument Set
(2" X 36" Aluminum Pipe Monument)

■ Railroad Spike Set

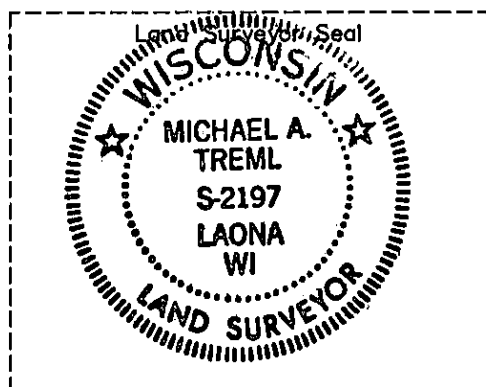
Note: All distances are
taken to nail in
side of tree and
to 4" Chiseled X in Boulder.



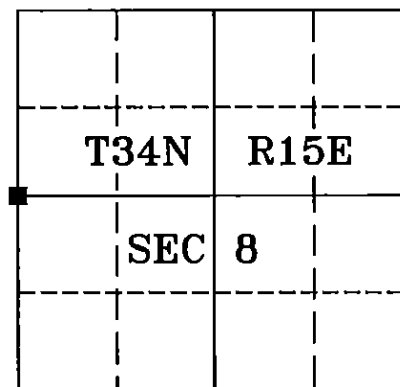
REGISTER'S OFFICE
Forest County, WI

Received for record this 7th day
of January A.D., 2003
at 8:30 o'clock A M. and
recorded in Vol. Corner Restorations of records
on page G5.

Kay Swanson
Deputy REGISTER



ASSUMED



I, Michael A. Trembl, RLS
(type or print name) certify that the corner location shown on
this record was determined by me or under my direction and
control and that this U.S. Public Land Survey Monument Record
is correct and complete to the best of my knowledge and belief.

Michael A Trembl 12/06/02
Signature Date

The West Quarter corner of
Section 8 T. 34 N., R. 15 E.
Forest County, WI

Index No. G-5

43415072000

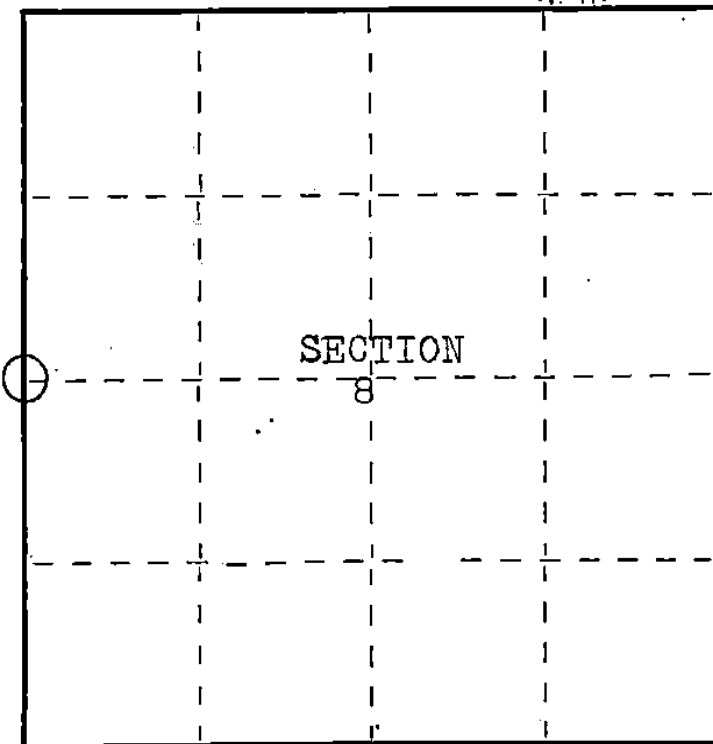
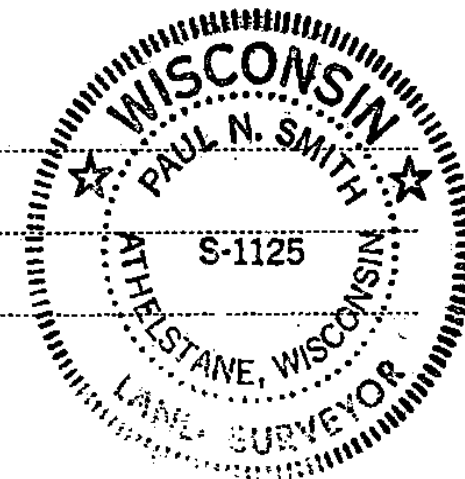
CERTIFIED LAND CORNER RESTORATION

State of Wisconsin

County of Forest } ss.

I Paul N. Smith, do hereby
 certify that on the 30th day
 of April, 1976, I found
 evidence of the West 1/2
 corner of Section 8
 Township 34, North, Range
15 East, Fourth Principal Meridian,
 as described hereon; and that from this evidence
 I established a new monument and accessories
 as described hereon to perpetuate the original
 location of this corner.

Resident witnesses:



○ = Corner monument restored.

History of original corner establishment:

Subdivision by James McBride, 1859

Original Bearing trees:

Elm - 10 inches South 41° East - 17 links

Ironwood - 6 inches North 36° West - 24 links

Original Bearing trees removed in building of Town Road

Description of corner evidence found:

Two inch iron pipe set by Public Service Survey for gas line.
 Said two inch iron pipe checks with plat corners on original
 Wabeno Plats.

Description of monument and accessories I established to perpetuate the original location of this corner.

Forest County standard monument 4 ft. aluminum pipe with aluminum cap

Elm - South 37°41'40" West 48.61 feet

Elm - South 68°23'40" East 45.80 feet

White Pine - North 29°48'40" East 35.86 feet

Dated at Athelstane, Wis., this 30th day of April, 1976.

Signature Paul N. Smith Title Land Surveyor Registration No. S-1125
 (County Surveyor, Registered Land Surveyor, or other duly authorized official)

Office of Register of Deeds, County of Forest, I hereby certify that the within
 instrument was filed in this office for record on the 23rd day of July, 1976
 at 4:15 o'clock P. M.

Eugene Stetson
 (Register of Deeds)

By _____ Deputy

DOCUMENT NUMBER

109762