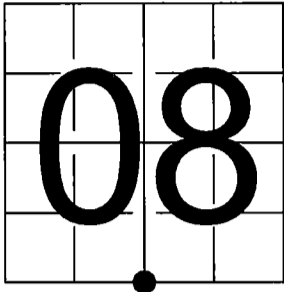


U.S. PUBLIC LAND SURVEY
MONUMENT RECORD

NOTE: This form is intended and designed to fulfill all requirements of Wisconsin Administrative Code, Chapter A-E 7.08 U.S. Public Land Survey Monument Record (3) (a-i)

A-E 7.08(3)(a) Identity of corner:
South 1/4 Corner Section 8,
Township 34 North, Range 15 East
of the Fourth Principal Meridian,
Town of Wabeno, Forest County, Wisconsin

WISCRS - FOREST COUNTY
N: 524,333.195 USft (XXX,XXX.XXX)
E: 902,055.461 USft (XXX,XXX.XXX)
Datum: NAD83 (2011)
GNSS Method RTK
GNSS Control WISCRS VRS



The coordinate value shown has been verified by the average of two or more GPS observations at a markedly different time. Coordinates shown in parenthesis are previously published values.

A-E 7.08(3)(b)

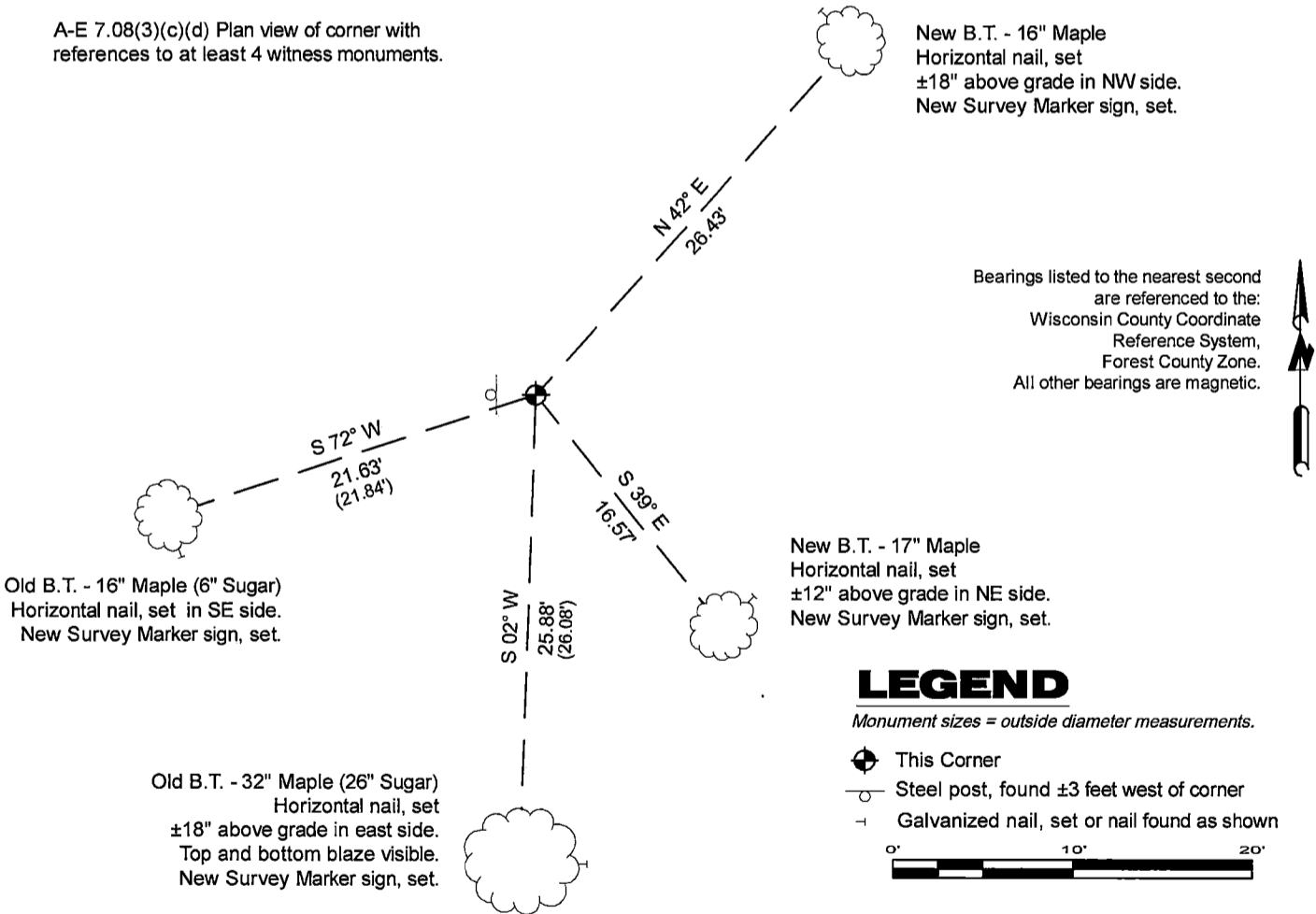
Original Surveyor: James McBride - June 16, 1859 to June 25, 1859
Hemlock 7 - S 33° W, 28 Links, Sugar 14 - N 53° E, 12 Links

See previous U.S. Public Land Survey Monument Record - J 7- February 19, 1986 - Surveyor 1558 - Milo E. Stefan - THENCE:

- May 28, 2009 - Surveyor 1741 - Ernest Woorster - indicates this position as "aluminum monument found" on county record Map #341508-20090528.
- March 18, 2008 - Surveyor 2265 - Harry J. Smith - indicates this position as "existing Forest County monument of record" on county record Map #341517-20080318.
- October 6, 2010 - Surveyor 2265 - Harry J. Smith - indicates this position as "existing Forest County monument of record" on county record Map #341508-20101006.
- November 16, 2015 - Surveyor 1451 - Eugene C. Uttech - indicates this position as "F.C. mon fnd" on county record map ##341508-20151116.

March 25, 2025 - I found a 2.4" diameter aluminum pipe monument with a 3.25" diameter aluminum cap stamped to identify the corner location. The monument is on the top of the east berm of a ditch running north-south and extends ±4" above grade. I also found 2 of Stefan's bearing trees alive and in good condition. I established 2 new reference monuments as shown below.

A-E 7.08(3)(c)(d) Plan view of corner with references to at least 4 witness monuments.



A-E 7.08(3)(e) 1859 Surveyor set a post, 1986 Surveyor set a 2"X30" aluminum monument, subsequent surveyors found the same, as did I in 2025.

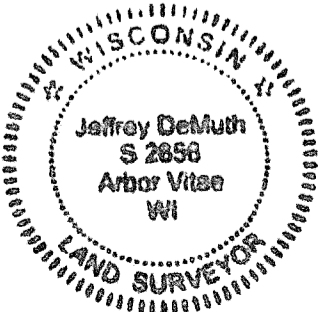
A-E 7.08(3)(f) I accept this monument in good faith as a FOUND PERPETUATED LOCATION of the corner.
A-E 7.08(3)(g)(h) This corner was not determined through lost-corner-proportionate methods.

A-E 7.08(3)(i) I, Jeffrey L. DeMuth, Professional Land Surveyor No. S-2656, hereby certify that the corner location on this record was determined by me or under my direction and control, and that this U.S. Public Land Survey Monument Record is correct and complete to the best of my knowledge, and belief.

SIGNATURE

March 28, 2025

DATE



43415080020

43415080020

J7

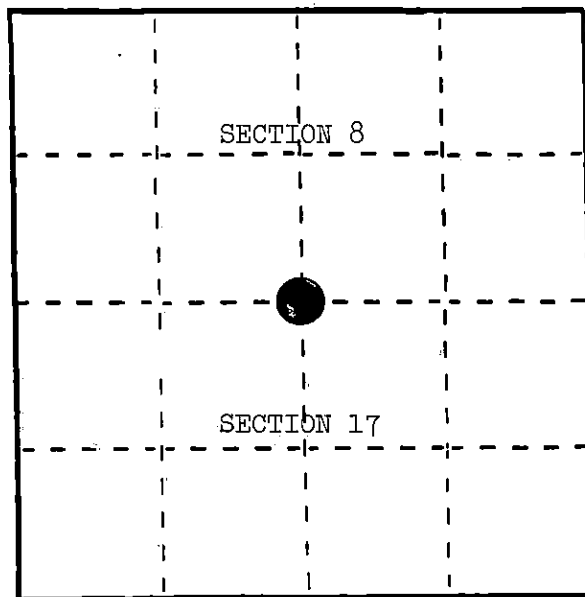
DOCUMENT NUMBER 129829

U. S. PUBLIC LAND SURVEY MONUMENT RECORD

INSTRUCTIONS: This record shall show the location of the corner and shall include all of the following nine elements (a through i).

- (a) Identify the corner by reference to the U.S. public land survey system.
 O = Corner monument restored.

Quarter corner to Sections 8 and 17, T.34N., R.15E.



REGISTER'S OFFICE
 Forest County, Wis.
 Received for record this 14th day
 of March A.D., 1982 at
 10:25 o'clock A.M. and recorded
 in Vol. CORNER RESTORATIONS
 page 167
Paul Aschenbrenner
 Register of Deeds

- (b) Describe any record evidence, monument evidence, occupational evidence, testimonial evidence or any other material evidence you considered, and whether the monument was found or placed.

In 1859, James McBride set quarter post at 39.90 chains with the following BTs: Hemlock, 7", S.33°W., 28 links; Sugar, 14", N.53°E., 12 links.

Corner used in City Plat of Wabeno.

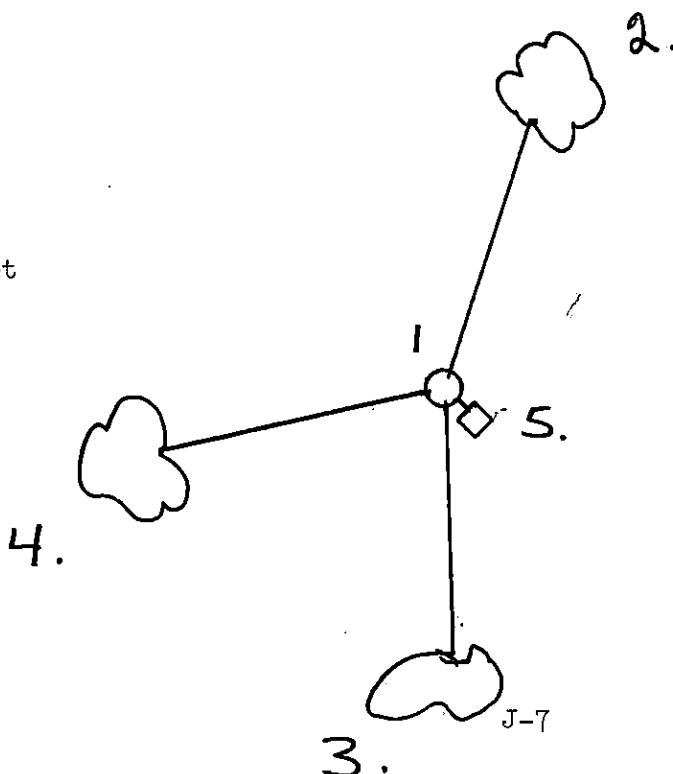
May 26, 1967, Resvick and Cochrane found rock pile in fence row and checked with Plat of Wabeno.

August, 1980, Milo E. Stefan found 2 1/2" iron pipe and accepted as the quarter corner.

- (c) In the plan view drawing below, provide reference ties to at least 4 witness monuments, or, if the location is within a municipality, to at least 2 witness monuments. (Witness monuments shall be made of concrete, natural stone, iron or other equally durable material.)
 Describe witness monuments.

- (d) Show a plan view drawing depicting the relevant monuments and reference ties which is sufficient in detail to enable accurate relocation of the corner monument if the corner monument is disturbed. Indicate north.

1. 2" x 30" aluminum monument
2. Sugar Maple, 11", N.15°E., 29.19 feet
3. Sugar Maple, 26", S.2°W., 26.08 feet
4. Sugar Maple, 6", S.72°W., 21.84 feet
5. Steel Sign Post, Southeast, 1.4 feet



(e) Describe any material discrepancy between the location of the corner as restored or reestablished and the location of that corner as previously restored or reestablished by distance and direction. Show the discrepancy on the plan view drawing under (d), above. Show the distances between the corner as previously restored or reestablished and (1) the corner as restored or reestablished, and (2) to at least 2 of the witness monuments shown on the drawing in (d), above.

(f) Was the corner restored through acceptance of (1) an obliterated evidence location, or, (2) a found perpetuated location?

(2) a found perpetuated location.

(g&h) Was the corner reestablished through lost corner proportionate methods? If so, show the method, including the directions and distances to other public land survey corners used as evidence or used for proportioning in determining the corner location?

(i) I, Milo E. Stefan
(Type or print name) certify that the corner location shown on this record was determined by me or under my direction and control and that this U.S. Public Land Survey Monument Record is correct and complete to the best of my knowledge and belief.

Signature

Date

Affix Land Surveyor Seal

