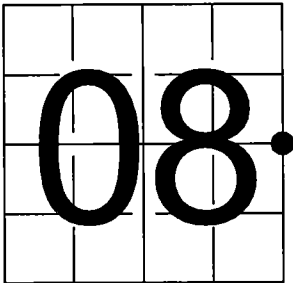


U.S. PUBLIC LAND SURVEY  
MONUMENT RECORD

NOTE: This form is intended and designed to fulfill all requirements of Wisconsin Administrative Code, Chapter A-E 7.08 U.S. Public Land Survey Monument Record (3) (a-i)

A-E 7.08(3)(a) Identity of corner:  
East 1/4 Corner Section 8,  
Township 34 North, Range 15 East  
of the Fourth Principal Meridian,  
Town of Wabeno, Forest County, Wisconsin

WISCORS - FOREST COUNTY  
N: 524,305.606 USft (XXX,XXX.XXX)  
E: 904,651.785 USft (XXX,XXX.XXX)  
Datum: NAD83 (2011)  
GNSS Method RTK  
GNSS Control WISCORS VRS



The coordinate value shown has been verified by the average of two or more GPS observations at a markedly different time. Coordinates shown in parenthesis are previously published values.

A-E 7.08(3)(b)

Original Surveyor: James McBride - June 16, 1859 to June 25, 1859  
Hemlock 12 - N 45° W, 19 Links, Birch 18 - S 87° E, 33 Links

See previous Certified Land Corner Restoration - G 9 - May 3, 1976 - Surveyor 1125 - Paul N. Smith - THENCE:

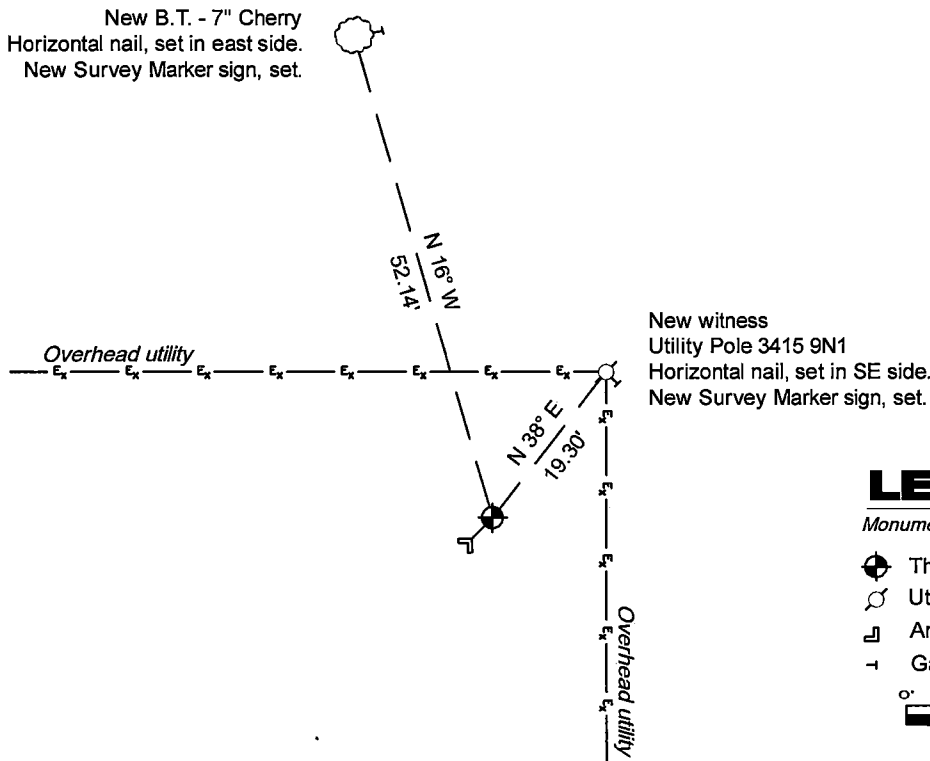
- June 5, 1989 - Surveyor 1665 - John C. Schulke - indicates this position as "Forest County monument" on county record Map #341509-19890605.
- May 3, 2001 - Surveyor 2197 - Michael A. Trembl - indicates this position as "aluminum monument found" on county record Map #341509-20010503.
- May 28, 2009 - Surveyor 1741 - Ernest Woorster - indicates this position as "aluminum monument found" on county record Map #341508-20090528.
- October 6, 2010 - Surveyor 2265 - Harry J. Smith - indicates this position as "existing Forest County monument of record" on county record Map #341508-20101006.
- August 1, 2013 - Surveyor 1523 - Todd J. Loftus - indicates this position as "subdivisional monument of record" on county record Map #341508-20130801.
- November 16, 2015 - Surveyor 1451 - Eugene C. Uttech - indicates this position as "F.C. mon fnd" on county record map ##341508-20151116.
- September 28, 2018 - Surveyor 2671 - Timothy J. Rusch - indicates this position as "found aluminum capped monument" on county record map ##341508-20180928.

March 27, 2025 - I found a 2.4" diameter aluminum pipe monument with a 3.25" diameter aluminum cap (not stamped). The monument is on the south side of a overhead utility line running east-west and extends ±18" above grade. I did not find any of Smith's reference monuments. I established 2 new reference monuments as shown below (no suitable trees available).

Bearings listed to the nearest second are referenced to the: Wisconsin County Coordinate Reference System, Forest County Zone. All other bearings are magnetic.

A-E 7.08(3)(c)(d) Plan view of corner with references to at least 4 witness monuments.

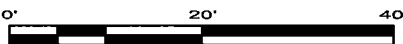
New B.T. - 7" Cherry  
Horizontal nail, set in east side.  
New Survey Marker sign, set.



LEGEND

Monument sizes = outside diameter measurements.

- ⊕ This Corner
- ⊕ Utility pole #3415 9N1
- ⊕ Angle Iron-post, found ±3 feet SW of corner
- ⊕ Galvanized nail, set or nail found as shown

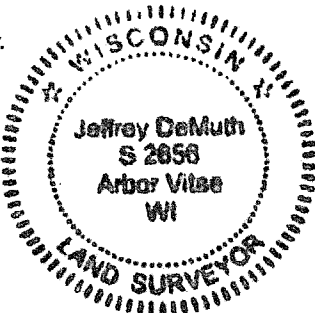


A-E 7.08(3)(e) 1859 Surveyor set a post, 1976 Surveyor set a standard Forest County monument, subsequent surveyors found the same, as did I in 2025.

A-E 7.08(3)(f) I accept this monument in good faith as a FOUND PERPETUATED LOCATION of the corner.

A-E 7.08(3)(g)(h) This corner was not determined through lost-corner-proportionate methods.

A-E 7.08(3)(i) I, Jeffrey L. DeMuth, Professional Land Surveyor No. S-2656, hereby certify that the corner location on this record was determined by me or under my direction and control, and that this U.S. Public Land Survey Monument Record is correct and complete to the best of my knowledge, and belief.



SIGNATURE

March 28, 2025

DATE

43415082000

43415082000

99

## CERTIFIED LAND CORNER RESTORATION

State of Wisconsin } ss.  
County of Forest .....

I Paul N. Smith ....., do hereby  
certify that on the 3rd ..... day  
of May ....., 1976, I found  
evidence of the East  $\frac{1}{4}$  .....  
corner of Section 8 .....  
Township 34 ....., North, Range  
15 East ....., Fourth Principal Meridian,  
as described hereon; and that from this evidence  
I established a new monument and accessories  
as described hereon to perpetuate the original  
location of this corner.

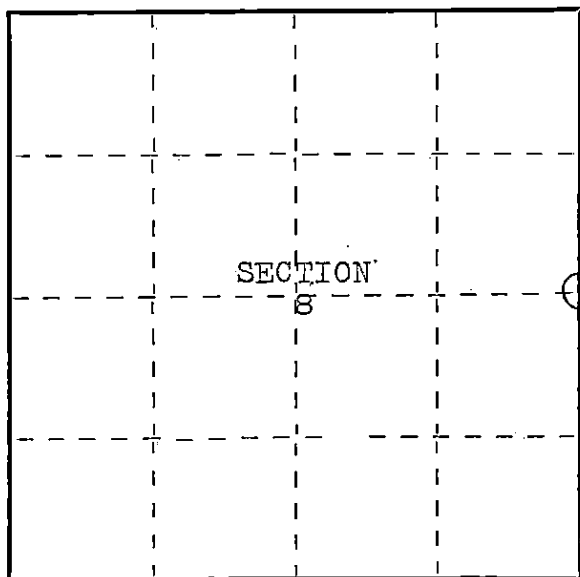
Resident witnesses:

.....

.....

.....

FORM 985 H. C. MILLER CO., MILWAUKEE



○ = Corner monument restored.

History of original corner establishment:

Subdivision by James McBride, 1859

Original Bearing trees:

Hemlock 12 inches - North 45° West - 19 links  
Birch 18 inches - South 87° East - 33 links

Description of corner evidence found:

Old wood stake in edge of Railroad grade

Description of monument and accessories I established to perpetuate the original location of this corner.

Standard Forest County monument

Public Service pole - North 40° East  
Iron pipe - North 20 feet  
Iron pipe - West 50 feet

Dated at Athelstone ....., Wis., this 3rd ..... day of May ....., 1976....

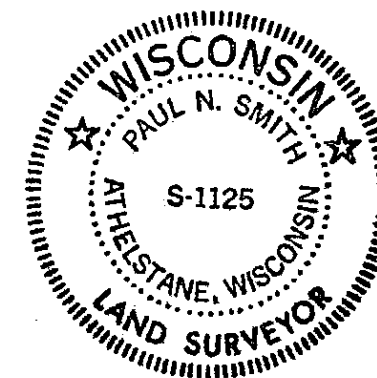
Signature Paul N. Smith Title Land Surveyor ..... Registration No. S-1125.  
(County Surveyor, Registered Land Surveyor, or other duly authorized official)

Office of Register of Deeds, County of Forest ....., I hereby certify that the within  
instrument was filed in this office for record on the 23rd ..... day of July ....., 1976..  
at 4:15 o'clock P. M.

Eugene Stangor  
(Register of Deeds)

By ..... Deputy

DOCUMENT NUMBER - 109759



43415082000