

Document Number  
209970

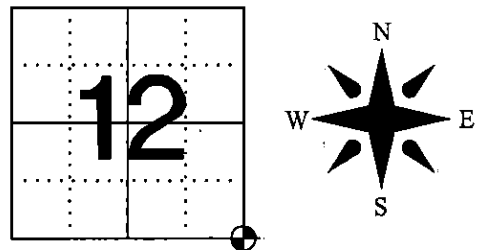
REGISTER'S OFFICE  
Forest County, Wis.  
Received for record this 17th day  
of September A.D., 2012 at  
9:45 o'clock A.M. and recorded  
in Vol. FOREVER RESTORATION  
page 123  
*Timothy M. Sullivan*  
Register of Deeds

**U.S. PUBLIC LAND SURVEY MONUMENT RECORD  
FOREST COUNTY, WISCONSIN**

IN ACCORDANCE WITH WISCONSIN ADMINISTRATIVE CODE, CHAPTER A-E 7.08 (3) (A)-(I)

**LOCATION:** CHAPTER A-E 7.08 (3): (A)

SECTION 12 TOWNSHIP 34 NORTH RANGE 15 EAST  
TYPE OF CORNER: SOUTHEAST SECTION CORNER  
TYPE OF MONUMENT: MAG NAIL OVER  $\frac{3}{4}$ in. REBAR  
WITH ALUMINUM CAP  
HORIZONTAL DATUM: NAD 83(2007) GRID  
FOREST COUNTY COORDINATES  
NORTHING: 521109.585  
EASTING: 925653.044



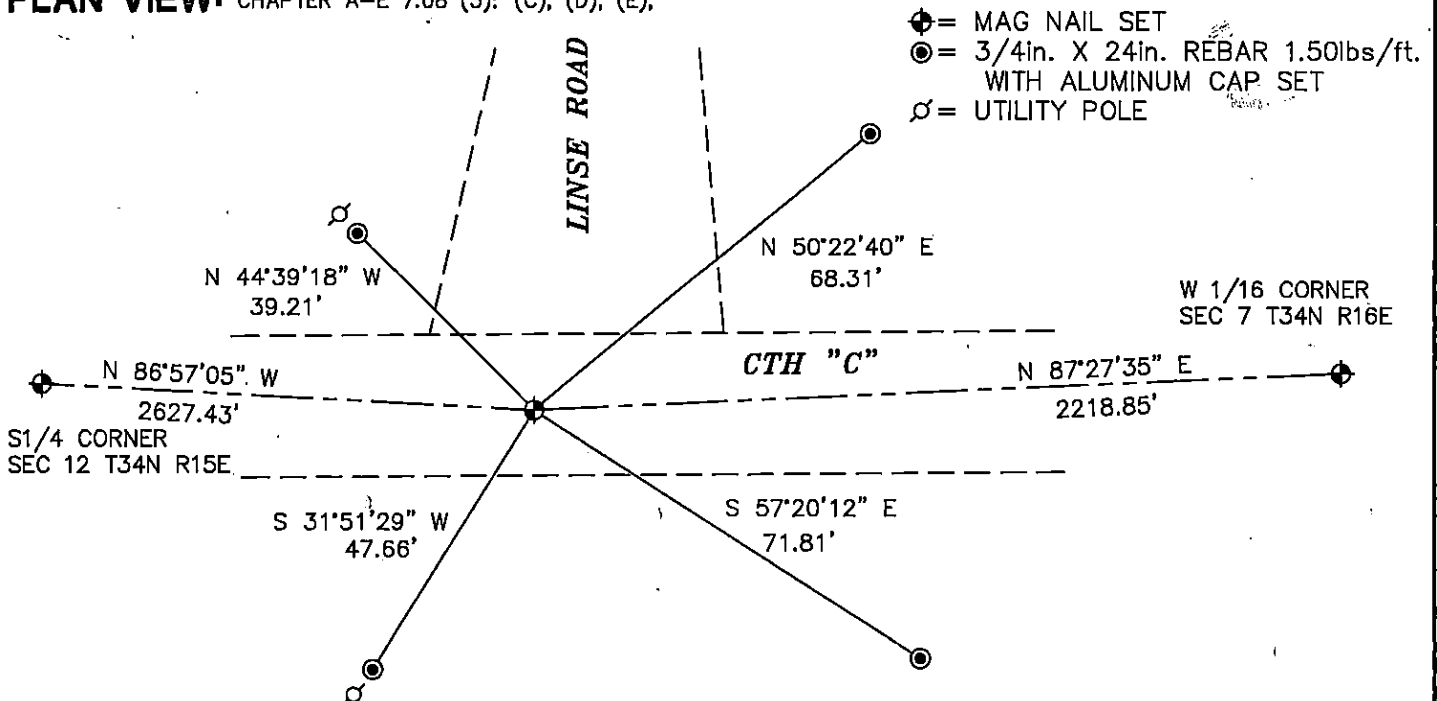
**RECOVERY PROCEDURES:** CHAPTER A-E 7.08 (3): (B), (F), (G), (H)

1993: PLAT OF SURVEY BY RLS 1651 CALLS FOR A RAILROAD SPIKE AT CORNER AND STATES:  
CORNER RECOVERED AS SET BY MILO STEFAN (RLS). CERTIFICATE ON FILE IN FOREST COUNTY,

7 JUNE 2012: FOUND CALLED FOR RAILROAD SPIKE AND RECORDED LOCATION IN PREPRATION OF CTH  
"C" RESURFACE PROJECT

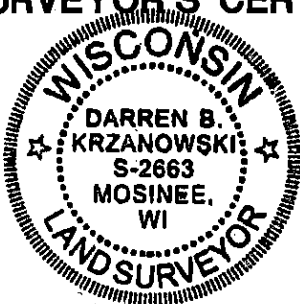
30 JULY 2012: SET  $\frac{3}{4}$ in. X 24in. REBAR WITH ALUMINUM CAP IN ROAD BASE AND THEN SET A MAG  
NAIL OVER REBAR IN BITUMINOUS SURFACE AFTER COMPLETION OF CTH "C" RESURFACE PROJECT

**PLAN VIEW:** CHAPTER A-E 7.08 (3): (C), (D), (E),



**SURVEYOR'S CERTIFICATE:** CHAPTER 7.08 (3): (I)

THE UNDERSIGNED HEREBY CERTIFIES THAT THE U.S. PUBLIC LAND  
SURVEY MONUMENT RECORD IS CORRECT AND COMPLETE TO THE BEST  
OF MY KNOWLEDGE AND BELIEF.



*Darren B. Krzanowski*  
DARREN B. KRZANOWSKI  
WISCONSIN LAND SURVEYOR S-2663  
DATED THIS 2nd DAY OF AUGUST 2012

43415120000

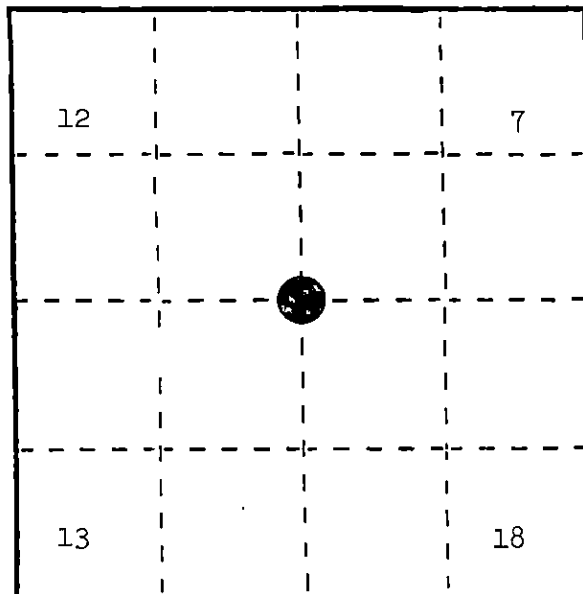
DOCUMENT NUMBER 129834

# U. S. PUBLIC LAND SURVEY MONUMENT RECORD

INSTRUCTIONS: This record shall show the location of the corner and shall include all of the following nine elements (a through i).

- (a) Identify the corner by reference to the U.S. public land survey system.  
 O = Corner monument restored.

Section corner to Sections 7, 12, 13, and 18,  
 T.34N., R.14-15E.



REGISTER'S OFFICE }  
 Forest County, Wis.  
 Received for record this 14th day  
 of March A.D., 1986 at  
 10:25 o'clock A.M. and recorded  
 in Vol. CORNER RESTORATIONS  
 page 1

Paul Aschenbrenner  
 Register of Deeds

- (b) Describe any record evidence, monument evidence, occupational evidence, testimonial evidence or any other material evidence you considered, and whether the monument was found or placed.

In 1857, Artemas Curtis placed post at 80.00 chains with the following BTs: Sugar, 16", N.14°E., 10 links; Sugar, 16", S.60°E., 35 links; Sugar, 10", S.52°W., 39 links; Sugar, 22", N.68°W., 31 links.

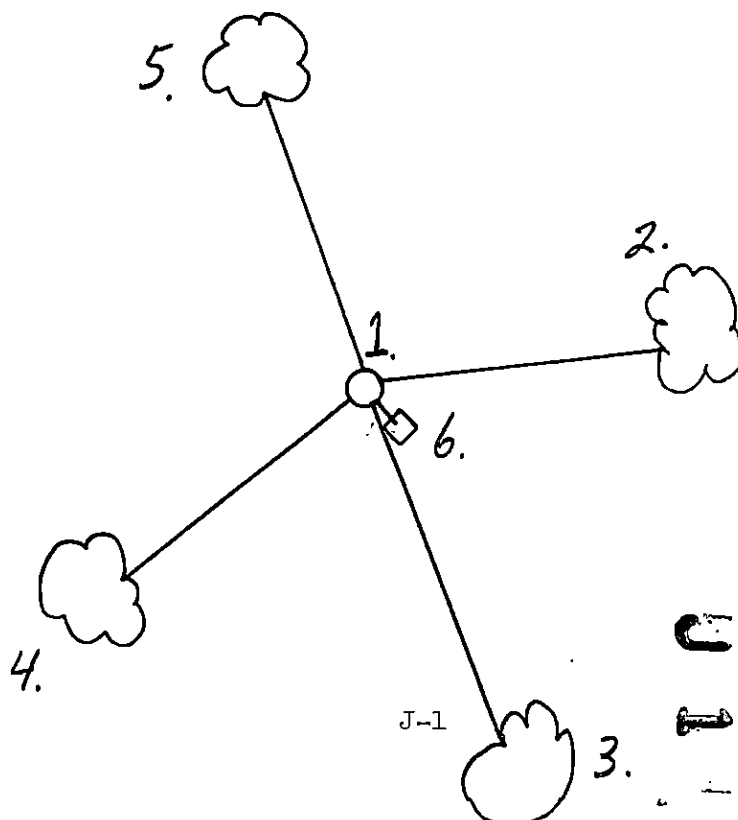
June 23, 1910, Nathan Smith made new BTs: Sugar, 8", N.82°E., 75 links; Sugar, 12", S.18°E., 52 3/4 links. The above evidence is no longer locatable due to road construction and pasture.

August 18, 1980, Milo E. Stefan found 1 1/2" iron pipe 4" below road surface and accepted this position as the best remaining evidence of the corner.

- (c) In the plan view drawing below, provide reference ties to at least 4 witness monuments, or, if the location is within a municipality, to at least 2 witness monuments. (Witness monuments shall be made of concrete, natural stone, iron or other equally durable material.)  
 Describe witness monuments.

- (d) Show a plan view drawing depicting the relevant monuments and reference ties which is sufficient in detail to enable accurate relocation of the corner monument if the corner monument is disturbed. Indicate north.

- 2" x 30" aluminum monument
- Basswood, 10", N.71°E., 86.73 feet
- Butternut, 12", S.15°E., 140.74 feet
- Sugar Maple, 8", S.57°W., 113.00 feet
- Sugar Maple, 4", N.13°W., 159.25 feet
- Steel Sign Post, S.12°E., 17.3 feet



(e) Describe any material discrepancy between the location of the corner as restored or reestablished and the location of that corner as previously restored or reestablished by distance and direction. Show the discrepancy on the plan view drawing under (d), above. Show the distances between the corner as previously restored or reestablished and (1) the corner as restored or reestablished, and (2) to at least 2 of the witness monuments shown on the drawing in (d), above.

(f) Was the corner restored through acceptance of (1) an obliterated evidence location, or, (2) a found perpetuated location?

(2) a found perpetuated location

(g&h) Was the corner reestablished through lost corner proportionate methods? If so, show the method, including the directions and distances to other public land survey corners used as evidence or used for proportioning in determining the corner location?

Affix Land Surveyor Seal



(i) I, Milo E. Stefan  
(Type or print name) certify that the corner location shown on this record was determined by me or under my direction and control and that this U.S. Public Land Survey Monument Record is correct and complete to the best of my knowledge and belief.

Milo E. Stefan  
Signature

2/19/86  
Date