

CORTNEY BRITTEN CLEEREMAN  
REGISTER OF DEEDS  
FOREST COUNTY WI  
PAGES: 2

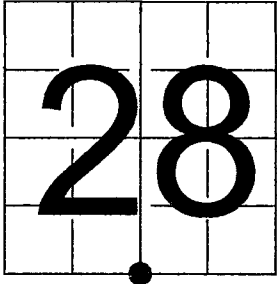
INDEX#: V11

U. S. PUBLIC LAND SURVEY MONUMENT RECORD

NOTE: This form is intended and designed to fulfill all requirements of Wisconsin Administrative Code, Chapter A-E 7.08 U.S. Public Land Survey Monument Record (3) (a-i)

A-E 7.08(3)(a) Identity of corner:  
South 1/4 Corner Section 28,  
Township 34 North, Range 15 East  
of the Fourth Principal Meridian,  
Town of Wabeno, Forest County,  
Wisconsin

WISCORS - FOREST COUNTY  
N: 505,755.424 USft (XXX,XXX.XXX)  
E: 907,138.335 USft (XXX,XXX.XXX)  
Datum: NAD83 (2011)  
GNSS Method RTK  
GNSS Control WISCORS VRS



The coordinate value shown has been verified by the average of two or more GPS observations at a markedly different time. Coordinates shown in parenthesis are previously published values.

A-E 7.08(3)(b)

Original Surveyor: James McBride - June 16, 1859 to June 25, 1859  
Birch 24 - S 71° W, 46 Links, Linn 30 - N 80° W, 29 Links

See previous U.S. Public Land Survey Monument Record - V-11 - April 21, 1993 - Surveyor 00973 - Wayne G. Dobbratz - THENCE:

- October 20, 1993 - Surveyor 1259 - Kim H. Pritzlaff - indicates this position as "existing Forest County Monument" on county record Map #341533-19931020.
- January, 1994 - Surveyor 1651 - Alan D. Harrison - indicates this position as "Forest County monument found" on county record Map #341533-19940100.
- July 8, 2002 - Surveyor 1616 - Stephen J. Favorite - indicates this position as "Forest County monument found" on county record Map #341533-20020708.
- July 31, 2003 - Surveyor 1616 - Stephen J. Favorite - indicates this position as "1" dia. iron rod found" on county record Map #341528-20030731.
- September 27, 2004 - Surveyor 1259 - Kim H. Pritzlaff - indicates this position as "existing Oconto County Monument" on county record Map #341533-20040927.
- June 30 & July 28, 2005 - Surveyor 2197 - Michael A. Trembl - indicates this position as "existing Forest County monument" on county record Map #341528-20050630 & #341533-20050728.
- November 24, 2009 - Surveyor 2197 - Michael A. Trembl - indicates this position as "existing Forest County monument" on county record Map #341533-20091124.
- April 6, 2010 - Surveyor 2265 - Harry J. Smith - indicates this position as "existing Forest County monument" on county record Map #341533-20100406.
- November 09, 2010 - Surveyor 2197 - Michael A. Trembl - indicates this position as "existing Forest County monument" on county record Map #341533-20101109.
- March 17, 2011 - Surveyor 2265 - Harry J. Smith - indicates this position as "existing Oconto County monument" on county record Map #341533-20110317.
- November 16, 2011 - Surveyor 2265 - Harry J. Smith - indicates this position as "existing Oconto County monument" on county record Map #341533-20111116.
- April 11, 2012 - Surveyor 2263 - Wayne R. Reuter - indicates this position as "B.L.M. monument recovered" on county record Map #341528-20120411.
- September 7 & 29, 2013 - Surveyor 2467 - Zachary J. Stevens - indicates this position as "fd brass cap" on county record Map #341528-20130907, #341528-20130929.
- July 17, 2015 - Surveyor 2467 - Zachary J. Stevens - indicates this position as "fd USFS cap" on county record Map #341528-20150717.
- May 11, 2016 - Surveyor 2265 - Harry J. Smith - indicates this position as "existing Oconto County monument" on county record Map #341533-20160511.
- September 21, 2018 - Surveyor 2617 - Jeffrey M. Lieuwen - indicates this position as "found Forest County monument" on county record Map #341533-20200000.
- November 13, 2019 - Surveyor 2852 - Joshua W. Prentice - indicates this position as "aluminum capped monument" on county record Map #341533-20191113.

May 23, 2024 - I found a 3.25" diameter brass capped monument with no stamp. The monument is ±5 feet south of Ferry Ranch Lane centerline, and is ±5" below road grade. I also found 3 of Dobbratz's reference monuments. I established 1 new reference monuments as shown on the reverse side of this sheet.

A-E 7.08(3)(c)(d) Plan view of corner with references to at least 4 witness monuments.

SEE REVERSE SIDE OF THIS SHEET FOR PLAN VIEW.

A-E 7.08(3)(e) 1859 Surveyor set a post, 1993 Surveyor found a 1" diameter iron pipe, with the exception of the July 31, 2003 Surveyor (found a 1" dia. iron rod) all subsequent Surveyor's found some kind of monument (aluminum capped, brass capped, Forest Co., Oconto Co....). I found a 3.25" diameter brass capped monument with no stamp in 2024.

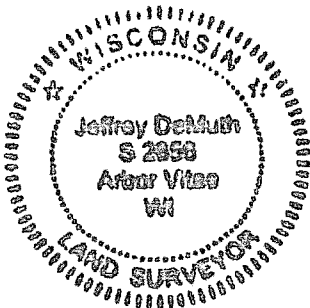
A-E 7.08(3)(f) I accept this monument in good faith as a FOUND PERPETUATED LOCATION of the corner.  
A-E 7.08(3)(g)(h) This corner was not determined through lost-corner-proportionate methods.

A-E 7.08(3)(i) I, Jeffrey L. DeMuth, Professional Land Surveyor No. S-2656, hereby certify that the corner location on this record was determined by me or under my direction and control, and that this U.S. Public Land Survey Monument Record is correct and complete to the best of my knowledge, and belief.

SIGNATURE

July 1, 2024

DATE



43415280020

43415280020

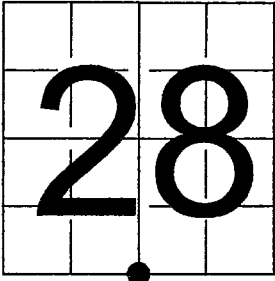
V11

U. S. PUBLIC LAND SURVEY MONUMENT RECORD

NOTE: This form is intended and designed to fulfill all requirements of Wisconsin Administrative Code, Chapter A-E 7.08 U.S. Public Land Survey Monument Record (3) (a-i)

A-E 7.08(3)(a) Identity of corner:  
South 1/4 Corner Section 28,  
Township 34 North, Range 15 East  
of the Fourth Principal Meridian,  
Town of Wabeno, Forest County,  
Wisconsin

WISCORS - FOREST COUNTY  
N: 505,755.424 USft (XXX,XXX.XXX)  
E: 907,138.335 USft (XXX,XXX.XXX)  
Datum: NAD83 (2011)  
GNSS Method RTK  
GNSS Control WISCORS VRS

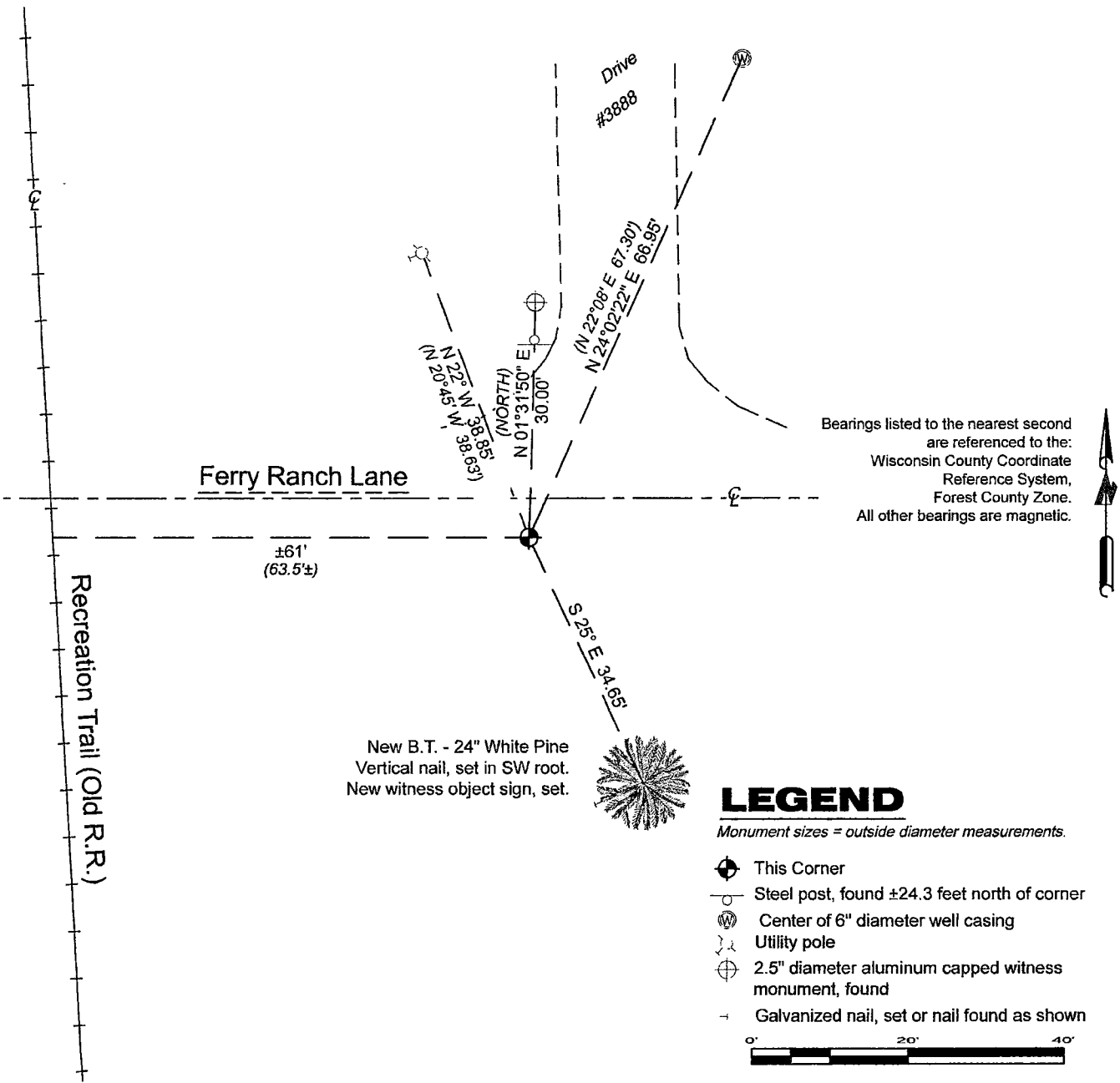


The coordinate value shown has been verified by the average of two or more GPS observations at a markedly different time. Coordinates shown in parenthesis are previously published values.

A-E 7.08(3)(b)

SEE REVERSE SIDE OF THIS SHEET FOR RECORD EVIDENCE.

A-E 7.08(3)(c)(d) Plan view of corner with references to at least 4 witness monuments.



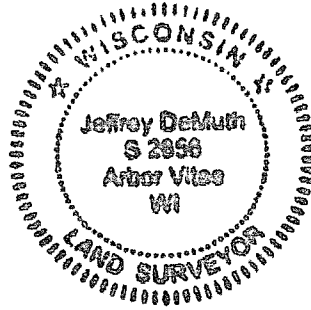
A-E 7.08(3)(e) SEE REVERSE SIDE OF THIS SHEET.

A-E 7.08(3)(f) SEE REVERSE SIDE OF THIS SHEET.

A-E 7.08(3)(g)(h) SEE REVERSE SIDE OF THIS SHEET.

A-E 7.08(3)(i) I, Jeffrey L. DeMuth, Professional Land Surveyor No. S-2656, hereby certify that the corner location on this record was determined by me or under my direction and control, and that this U.S. Public Land Survey Monument Record is correct and complete to the best of my knowledge, and belief.

SIGNATURE DATE July 1, 2024



147374

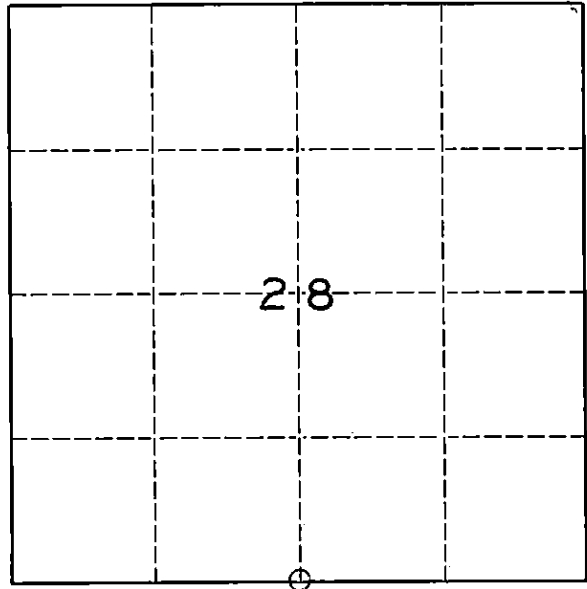
## U. S. PUBLIC LAND SURVEY MONUMENT RECORD

## INSTRUCTIONS:

This record shall show the location of the corner and shall include all of the following nine elements (a through i).

- (a) Identify the corner by reference to the U.S. public land survey system.  
O = Corner monument restored.

SOUTH  $\frac{1}{4}$  CORNER OF SECTION 28,  
TOWNSHIP 34 NORTH, RANGE 15 EAST.



- (b) Describe any record evidence, monument evidence, occupational evidence, testimonial evidence or any other material evidence you considered, and whether the monument was found or placed.

1859 - ORIGINAL SURVEY BY McBRIDE

1906 - N.H. SMITH FOUND 1 ORIGINAL WITNESS STANDING, ESTABLISHED  $\frac{1}{4}$  CORNER, 96 $\frac{1}{2}$  lks. (63.52FT) EAST OF CENTERLINE OF RAILROAD.

1981 - PAUL SMITH ESTABLISHED  $\frac{1}{4}$  CORNER FROM N.H. SMITH'S NOTES AND DROVE R.R. SPIKE AT  $\frac{1}{4}$  CORNER.

1982 - W. DOBBRATZ FOUND BENT R.R. SPIKE AT  $\frac{1}{4}$  CORNER, REPLACED WITH 1" DIA. IRON PIPE

1993 - W. DOBBRATZ FOUND 1" DIA. IRON PIPE AT  $\frac{1}{4}$  CORNER

- (c) In the plan view drawing below, provide reference ties to at least 4 witness monuments, or, if the location is within a municipality, to at least 2 witness monuments. (Witness monuments shall be made of concrete, natural stone, iron or other equally durable material.)  
Describe witness monuments.

- (d) Show a plan view drawing depicting the relevant monuments and reference ties which is sufficient in detail to enable accurate relocation of the corner monument if the corner monument is disturbed. Indicate north.

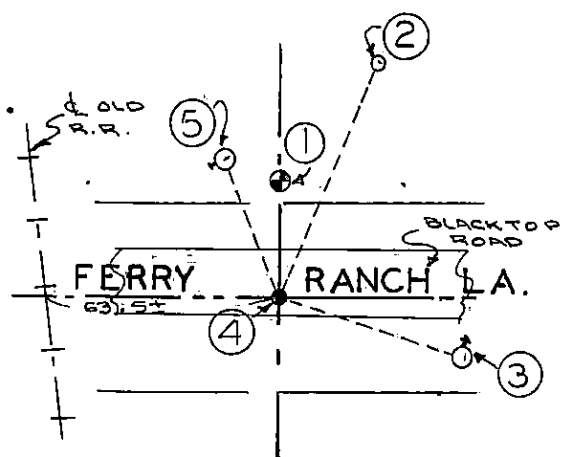
## WITNESS MONUMENTS

- 1.- STANDARD ALUMINUM FOREST COUNTY MONUMENT  
30.00FT. NORTH OF  $\frac{1}{4}$  CORNER, STAMPED W.C.  
COR. 30FT. SO.
- 2.- CENTER OF 6" WELL CASING N.22°-08'E. 67.30FT.
- 3.- POWER POLE # 3415-33E7, 60d SPIKE IN N. FACE  
S.74°-50'E. 50.12FT.
- 4.- FOUND 1" DIA. IRON PIPE AT  $\frac{1}{4}$  CORNER
- 5.- POWER POLE #3415-28R., 60d SPIKE IN W. FACE  
N.20°-45'W. 38.63FT.

REGISTER'S OFFICE  
Forest County, Wis.

Received for record this 13th day  
of May A.D., 1993 at  
11:00 o'clock A.M. and recorded  
in Vol. 34-15 Corner Restoration  
page 1-11

*Seal Chiller, Deputy*  
Register of Deeds



N  
NOT TO SCALE

43415280020

Describe any material discrepancy between the location of the corner as restored or reestablished and the location of that corner as previously restored or reestablished by distance and direction. Show the discrepancy on the plan view drawing under (d), above. Show the distances between the corner as previously restored or reestablished and (1) the corner as restored or reestablished, and (2) to at least 2 of the witness monuments shown on the drawing in (d), above.

NONE

(f) Was the corner restored through acceptance of (1) an obliterated evidence location, or, (2) a found perpetuated location.?

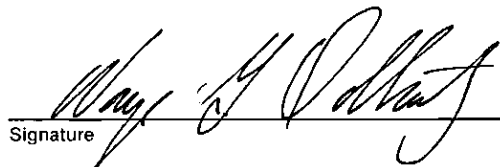
(2)

(g & h) Was the corner reestablished through lost corner proportionate methods? If so, show the method, including the directions and distances to other public land survey corners used as evidence or used for proportioning in determining the corner location.

(i) I, WAYNE G. DOBBRATZ  
(type or print name)

certify that the corner location shown on this record was determined by me or under my direction and control and that this U.S. Public Land Survey Monument Record is correct and complete to the best of my knowledge and belief.

Signature



Date

4/21/93

