

CORTNEY BRITTEN CLEEREMAN
REGISTER OF DEEDS
FOREST COUNTY WI
PAGES: 2

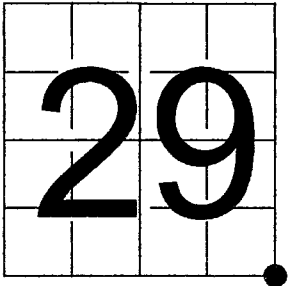
INDEX#: V9

U. S. PUBLIC LAND SURVEY MONUMENT RECORD

NOTE: This form is intended and designed to fulfill all requirements of Wisconsin Administrative Code, Chapter A-E 7.08 U.S. Public Land Survey Monument Record (3) (a-i)

A-E 7.08(3)(a) Identity of corner:
Southeast Corner Section 29,
Township 34 North, Range 15 East
of the Fourth Principal Meridian,
Town of Wabeno, Forest County,
Wisconsin

WISCRS - FOREST COUNTY
N: 505,817.168 USft (XXX,XXX.XXX)
E: 904,370.450 USft (XXX,XXX.XXX)
Datum: NAD83 (2011)
GNSS Method RTK
GNSS Control WISCORS VRS



The coordinate value shown has been verified by the average of two or more GPS observations at a markedly different time. Coordinates shown in parenthesis are previously published values.

A-E 7.08(3)(b)

Original Surveyor: James McBride - June 16, 1859 to June 25, 1859
Elm 10 - N 34° W, 33 Links, Sugar 12 - N 9° E, 50 Links, Elm 10 - S 64° E, 62 Links, Sugar 7 - S 48° W, 61 Links

See previous U.S.Public Land Survey Monument Record - V9 - December 24, 1984 - Surveyor 1558 - Milo E. Stefan - THENCE:

- October 20, 1993 - Surveyor 1259 - Kim H. Pritzlaff - indicates this position as "existing Forest County Monument" on county record Map #341533-19931020.
- January, 1994 - Surveyor 1651 - Alan D. Harrison - indicates this position as "2" dia. brass capped monument found" on county record Map #341533-19940100.
- July 31, 2003 - Surveyor 1616 - Stephen J. Favorite - indicates this position as "2" dia. brass capped iron pipe found" on county record Map #341528-20030731.
- July 28, 2005 - Surveyor 2197 - Michael A. Trembl - indicates this position as "Forest County monument" on county record Map #341533-20050728.
- July 17, 2006 - Surveyor 2333 - Craig A. Keach - indicates this position as "PK nail fnd" on county record Map #341532-20060717.
- July 20, 2008 - Surveyor 00973 - Wayne G. Dobbratz - indicates this position as "found mag nail in place of U.S. monument" on county record Map #341529-20080720.
- November 24, 2009 - Surveyor 2197 - Michael A. Trembl - indicates this position as "existing Forest County monument" on county record Map #341533-20091124.
- April 6, 2010 - Surveyor 2265 - Harry J. Smith - indicates this position as "existing Forest County monument" on county record Map #341533-20100406.
- November 09, 2010 - Surveyor 2197 - Michael A. Trembl - indicates this position as "existing Forest County monument" on county record Map #341533-20101109.
- March 17, 2011 - Surveyor 2265 - Harry J. Smith - indicates this position as "existing Oconto County monument" on county record Map #341533-20110317.
- April 11, 2012 - Surveyor 2263 - Wayne R. Reuter - indicates this position as "B.L.M. monument recovered" on county record Map #341528-20120411.
- September 12, 2012 - Surveyor 2517 - Jeffrey M. Lieuwen - indicates this position as "found U.S.F.S. 4" brass cap monument" on county record Map #341529-20120000.
- September 7 & 29, 2013 - Surveyor 2467 - Zachary J. Stevens - indicates this position as "fd USFS cap" on county record Map #341528-20130907, #341528-20130929, 341529-20130907 & 341529-20130929.
- July 17, 2015 - Surveyor 2467 - Zachary J. Stevens - indicates this position as "fd USFS cap" on county record Map #341528-20150717.
- September 21, 2018 - Surveyor 2617 - Jeffrey M. Lieuwen - indicates this position as "found Forest County monument" on county record Map #341533-20200000.
- November 13, 2019 - Surveyor 2852 - Joshua W. Prentice - indicates this position as "aluminum capped monument" on county record Map #341533-20191113.
- April 5, 2023 - Surveyor 809-8 - Michael S. Hess - indicates this position as "aluminum monument found" on county record Map #341529-20230405.

May 21, 2024 - I found a 3.25" diameter brass capped monument stamped to identify the corner location. The monument is ±1 foot north of Elliot Road centerline, and ±1 foot west of Shiner Lake Road centerline, and is flush with the road grade. I also found 2 of Stefan's bearing trees. I established 2 new reference monuments as shown on the reverse side of this sheet.

A-E 7.08(3)(c)(d) Plan view of corner with references to at least 4 witness monuments.

SEE REVERSE SIDE OF THIS SHEET FOR PLAN VIEW.

A-E 7.08(3)(e) 1859 Surveyor set a post, 1984 Surveyor set a 2" X 36" iron pipe filled with concrete at the centerline intersection of Shiner Lake Road and Elliot Road, subsequent surveyors found varying monumentation. I found a 3.25" diameter brass capped monument in 2024.

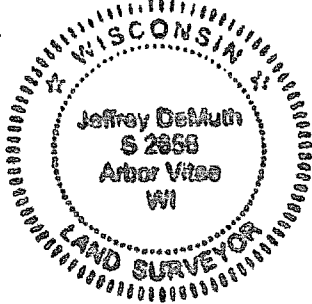
A-E 7.08(3)(f) I accept this monument in good faith as a FOUND PERPETUATED LOCATION of the corner.
A-E 7.08(3)(g)(h) This corner was not determined through lost-corner-proportionate methods.

A-E 7.08(3)(i) I, Jeffrey L. DeMuth, Professional Land Surveyor No. S-2656, hereby certify that the corner location on this record was determined by me or under my direction and control, and that this U.S. Public Land Survey Monument Record is correct and complete to the best of my knowledge, and belief.

SIGNATURE

July 1, 2024

DATE



43415290000

43415290000

V9

U. S. PUBLIC LAND SURVEY MONUMENT RECORD

NOTE: This form is intended and designed to fulfill all requirements of Wisconsin Administrative Code, Chapter A-E 7.08 U.S. Public Land Survey Monument Record (3) (a-i)

A-E 7.08(3)(a) Identity of corner:
Southeast Corner Section 29,
Township 34 North, Range 15 East
of the Fourth Principal Meridian,
Town of Wabeno, Forest County,
Wisconsin

WISCRS - FOREST COUNTY
N: 505,817.168 USft (XXX,XXX.XXX)
E: 904,370.450 USft (XXX,XXX.XXX)
Datum: NAD83 (2011)
GNSS Method RTK
GNSS Control WISCORS VRS

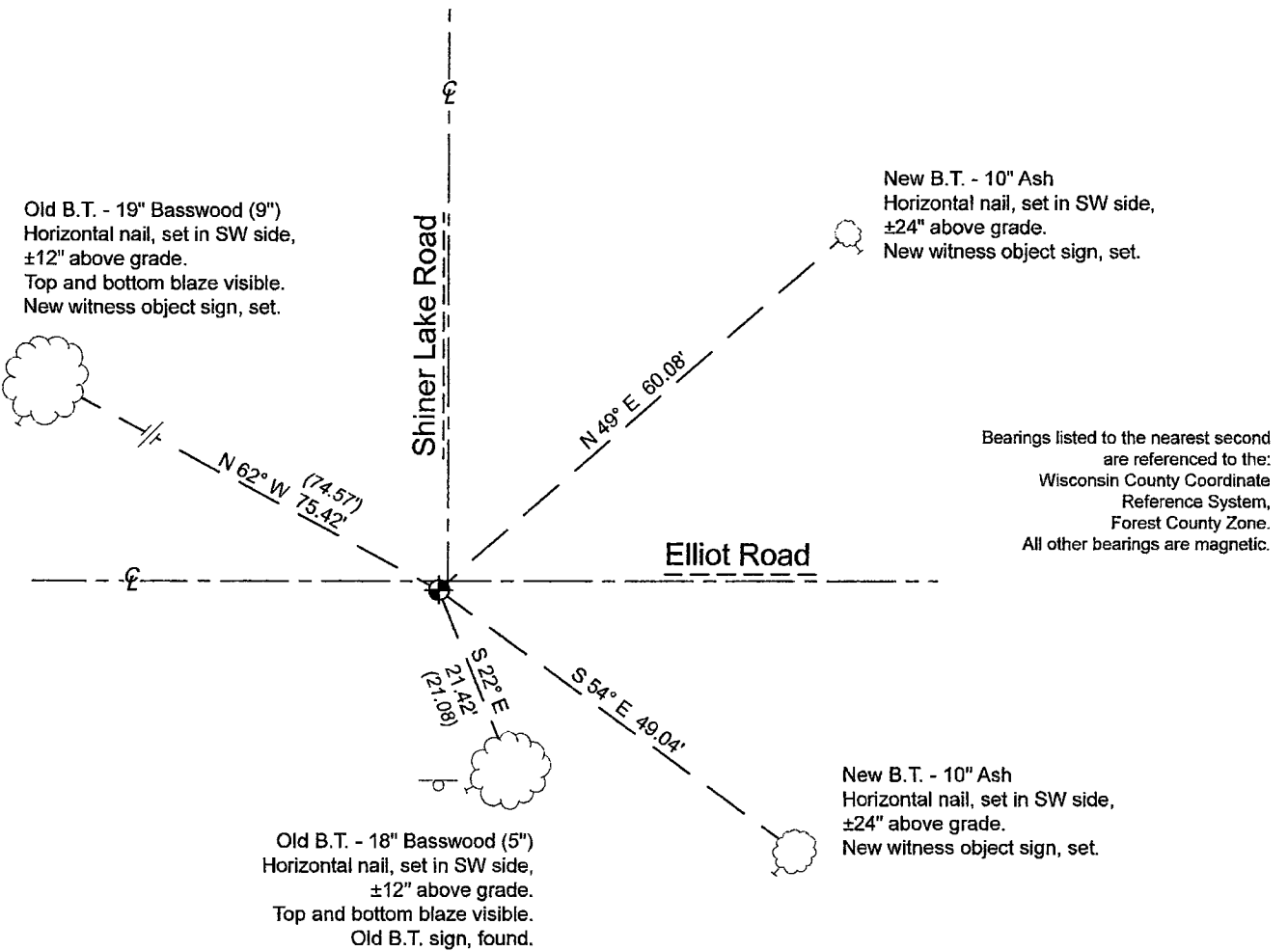


The coordinate value shown has been verified by the average of two or more GPS observations at a markedly different time. Coordinates shown in parenthesis are previously published values.

A-E 7.08(3)(b)

SEE REVERSE SIDE OF THIS SHEET FOR RECORD EVIDENCE.

A-E 7.08(3)(c)(d) Plan view of corner with references to at least 4 witness monuments.



LEGEND

Monument sizes = outside diameter measurements.

- This Corner
- Steel post, found ±21 feet south of corner
- Galvanized nail, set or nail found as shown

A-E 7.08(3)(e) SEE REVERSE SIDE OF THIS SHEET.

A-E 7.08(3)(f) SEE REVERSE SIDE OF THIS SHEET.

A-E 7.08(3)(g)(h) SEE REVERSE SIDE OF THIS SHEET.

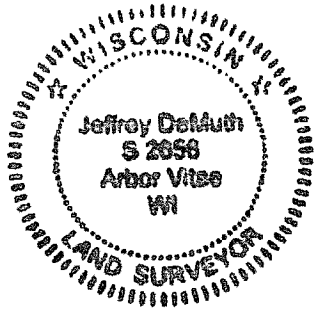
A-E 7.08(3)(i) I, Jeffrey L. DeMuth, Professional Land Surveyor No. S-2656, hereby certify that the corner location on this record was determined by me or under my direction and control, and that this U.S. Public Land Survey Monument Record is correct and complete to the best of my knowledge, and belief.

SIGNATURE

Jeffrey L. DeMuth

July 1, 2024

DATE



43415290000

43415290000

U. S. PUBLIC LAND SURVEY MONUMENT RECORD

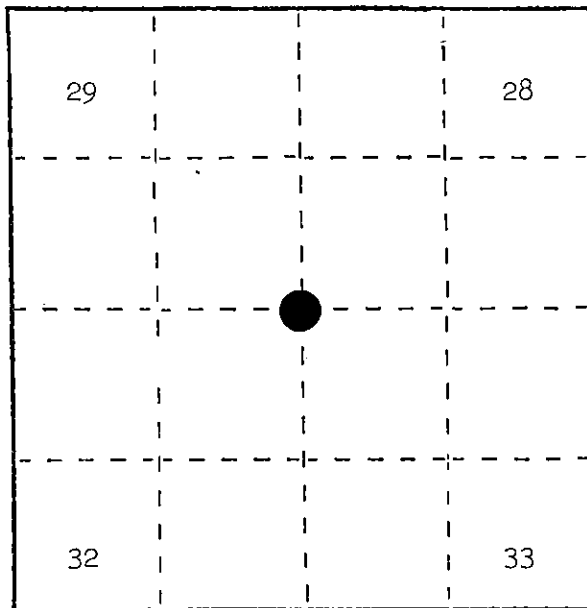
INSTRUCTIONS:

This record shall show the location of the corner and shall include all of the following nine elements (a through i).

- (a) Identify the corner by reference to the U.S. public land survey system.

○ = Corner monument restored.

Section corner to Sections 28, 29, 32, and 33, T.34N., R.15E., Forest County, Wisconsin.



- (b) Describe any record evidence, monument evidence, occupational evidence, testimonial evidence or any other material evidence you considered, and whether the monument was found or placed.

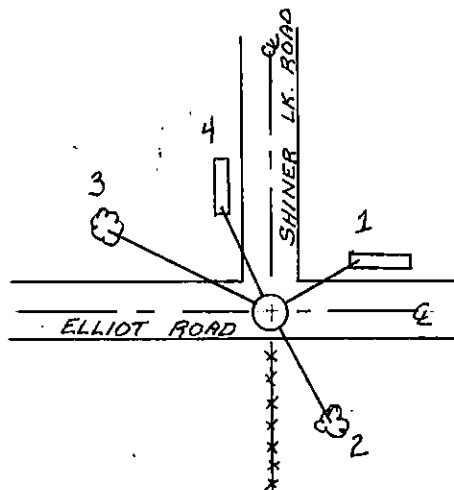
No original evidence found; therefore, we used the centerlines of Elliot Road east-west, Shiner Lake Road north, and fence line south as best available evidence. Corner position is monumented by a 2" x 36" iron pipe filled with concrete with a brass cap, 18" below road surface.

- (c) In the plan view drawing below, provide reference ties to at least 4 witness monuments, or, if the location is within a municipality, to at least 2 witness monuments. (Witness monuments shall be made of concrete, natural stone, iron or other equally durable material.) Describe witness monuments.

- (d) Show a plan view drawing depicting the relevant monuments and reference ties which is sufficient in detail to enable accurate relocation of the corner monument if the corner monument is disturbed. Indicate north.

- *1. Bridge #1, N.70°E., 45.00 feet
2. Basswood, 5", S.22°E., 21.08 feet
3. Basswood, 9", N.62°W., 74.57 feet
4. Bridge #2, N.12°W., 47.89 feet

*Chisled cross on top surface of both bridges.



REGISTER'S OFFICE }
Forest County, Wis. }
Received for record this... 21st day
of January... A.D., 1985 at
11:00 o'clock... A.M. and
recorded in Vol. CORNER RESTORATIONS
on page 11-9
Paul E. Aschenbrenner
REGISTER

(e) Describe any material discrepancy between the location of the corner as restored or reestablished and the location of that corner as previously restored or reestablished by distance and direction. Show the discrepancy on the plan view drawing under (d), above. Show the distances between the corner as previously restored or reestablished and (1) the corner as restored or reestablished, and (2) to at least 2 of the witness monuments shown on the drawing in (d), above.

None.

(f) Was the corner restored through acceptance of (1) an obliterated evidence location, or, (2) a found perpetuated location?

Best available evidence

(g&h) Was the corner reestablished through lost corner proportionate methods? If so, show the method, including the directions and distances to other public land survey corners used as evidence or used for proportioning in determining the corner location?

No.

Affix Land Surveyor Seal



(i) I, Milo E. Stefan
(type or print name) certify that the corner location shown on this record was determined by me or under my direction and control and that this U.S. Public Land Survey Monument Record is correct and complete to the best of my knowledge and belief.

Milo E. Stefan
Signature

12/24/84
Date