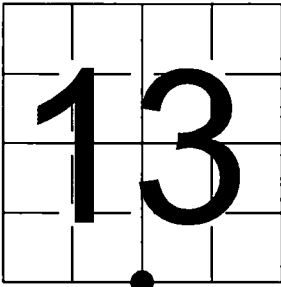


U.S. PUBLIC LAND SURVEY
MONUMENT RECORD

NOTE: This form is intended and designed to fulfill all requirements of Wisconsin Administrative Code, Chapter A-E 7.08 U.S. Public Land Survey Monument Record (3) (a-i)

A-E 7.08(3)(a) Identity of corner:
South 1/4 Corner Section 13,
Township 34 North, Range 16 East
of the Fourth Principal Meridian,
Town of Wabeno, Forest County, Wisconsin

WISCRS - FOREST COUNTY
N: 515,809.869 USft (XXX,XXX.XXX)
E: 955,450.598 USft (XXX,XXX.XXX)
Datum: NAD83 (2011)
GNSS Method RTN
GNSS Control WISCORS VRS



The coordinate value shown has been verified by the average of two or more GPS observations at a markedly different time. Coordinates shown in parenthesis are previously published values.

A-E 7.08(3)(b)

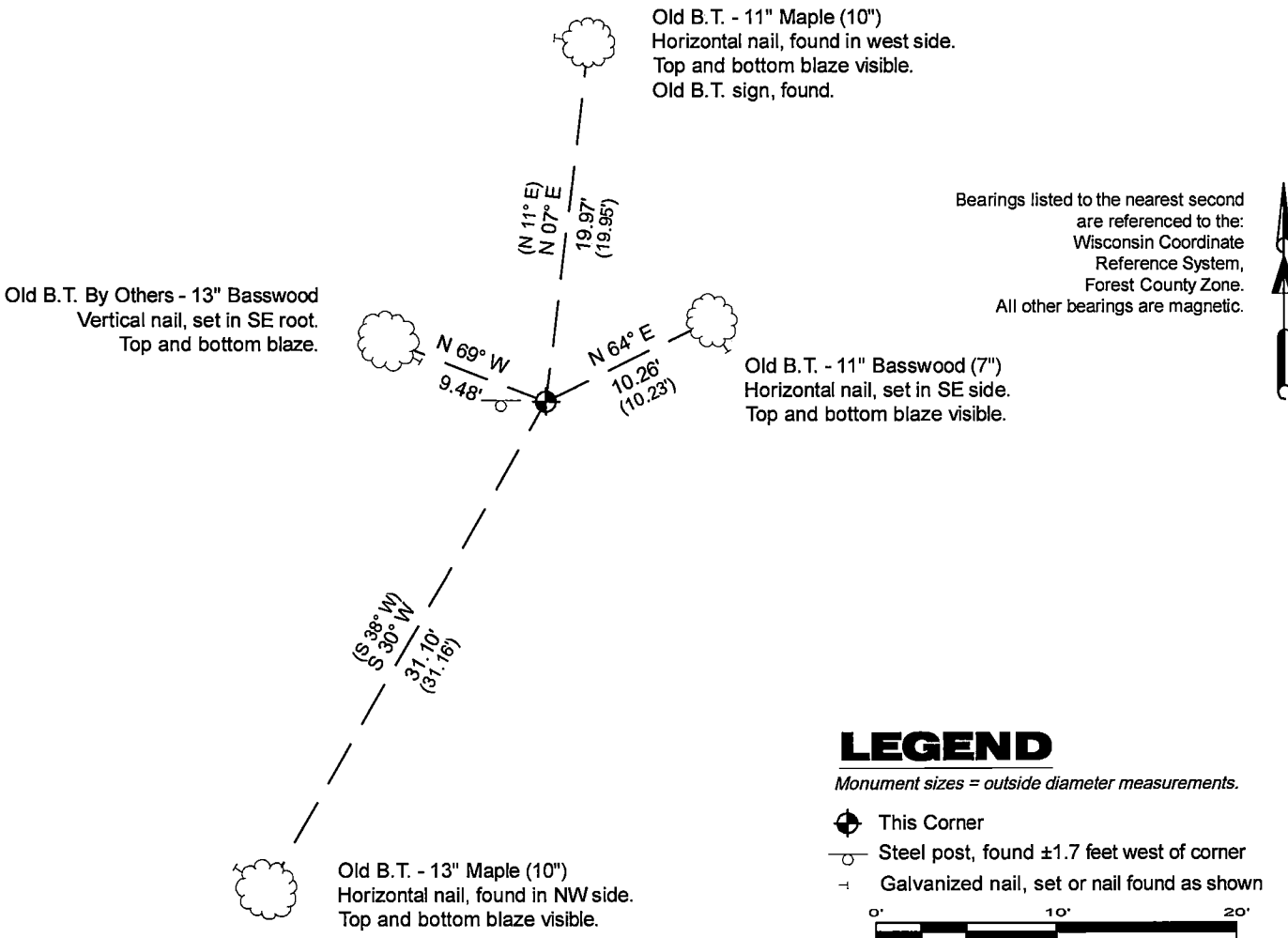
Original Surveyor: James McBride - August, 1858
Sugar 10 - N 7° W, 7 Links, Hemlock 10 - S 37° E, 9 Links

See previous U.S.Public Land Survey Monument Record - N-23 - November 17, 2005 - Surveyor 2546 - Thomas M. Healy - THENCE:

- February 7, 2017 - Surveyor 2617 - Jeffrey M. Lieuwen - indicates this position as "found 2" alum mon w/alum cap pipe" on county record Map #341613-20170213.

August 25, 2025 - I found a 2.4" diameter aluminum pipe monument with a 3.25" diameter aluminum cap stamped to identify the corner location. The monument is on high land and extends ±8" above grade. I also found 3 of Healy's bearing trees alive and in good condition, as well as a solid iron rod. I measured Healy's bearing trees and established 1 new reference monuments as shown below.

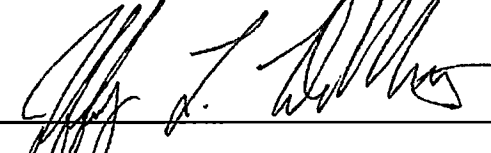
A-E 7.08(3)(c)(d) Plan view of corner with references to at least 4 witness monuments.

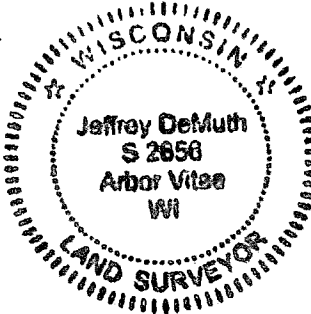


A-E 7.08(3)(e) 1858 Surveyor set a post, subsequent Surveyors found an aluminum monument, I found 2.4" diameter aluminum pipe monument with a 3.25" diameter aluminum cap stamped to identify the corner location in 2025.

A-E 7.08(3)(f) I accept this monument in good faith as a FOUND PERPETUATED LOCATION of the corner
A-E 7.08(3)(g)(h) This corner was not determined through lost-corner-proportionate methods.

A-E 7.08(3)(i) I, Jeffrey L. DeMuth, Professional Land Surveyor No. S-2656, hereby certify that the corner location on this record was determined by me or under my direction and control, and that this U.S. Public Land Survey Monument Record is correct and complete to the best of my knowledge, and belief.


SIGNATURE
September 14, 2025
DATE



Document Number

189317

REGISTER'S OFFICE
Forest County, Wis.

Received for record this 18th day
of November A.D., 2005 at
3:55 o'clock P.M. and recorded
in Vol. Corner Restoration
page N-23

Kay Swanson, Deputy
Register of Deeds

U.S. PUBLIC LAND SURVEY MONUMENT RECORD

(AS REQUIRED BY S. A-E 5.02, WI ADM. CODE)

HISTORY OF ORIGINAL CORNER ESTABLISHMENT AND SUBSEQUENT RESTORATIONS AND DESCRIPTION OF ANY RECORD, MONUMENT, OCCUPATIONAL, TESTIMONIAL, OR OTHER EVIDENCE CONSIDERED:

1858 - JAMES McBRIDE, SURVEYOR, SET POST

SET THE FOLLOWING WITNESSES:
SUGAR MAPLE 10" N07°W 7 LINKS
HEMLOCK 10" S37°E 9 LINKS

1981 - MILO STEFAN, SURVEYOR, S-1558, FOUND A 7/8" STEEL ROD 2' LONG WITH A 90° BEND ON THE END 2" LONG. 4-SIDED BLAZED 3" SUGAR, N30°W, APPROXIMATELY 30' FROM IRON. STUMP HOLES AT S37°E - 6', AND N07°W - 5' FROM IRON BAR. REPLACED IRON ROD WITH A 2" X 36" ALUMINUM PIPE.

1984 - MILO STEFAN, SURVEYOR, S-1558, PERPETUATED A FOUND LOCATION WITH A 2" X 36" ALUMINUM PIPE STAMPED TO IDENTIFY THE CORNER WITH THE FOLLOWING WITNESSES:

SUGAR MAPLE 5" N05°E 19.82 FEET
BASSWOOD 7" S19°E 13.49 FEET
SUGAR MAPLE 7" S29°W 31.18 FEET
STEEL SIGN WEST 1.6 FEET

CORNER WAS: (CHECK ALL THAT APPLY)

☐ RESTORED THROUGH ACCEPTANCE OF AN OBLITERATED LOCATION

☒ RESTORED THROUGH ACCEPTANCE OF A FOUND PERPETUATED LOCATION

☐ CONSIDERED A LOST CORNER AND REESTABLISHED THROUGH LOST CORNER PROPORTIONATE METHODS (INCLUDING A PLAN VIEW DRAWING SHOWING DISTANCES AND DIRECTIONS TO OTHER PUBLIC LAND SURVEY CORNERS USED FOR PROPORTIONING AND DETERMINING THE CORNER LOCATION)

☐ RESTORED OF REESTABLISHED IN A LOCATION THAT DIFFERS FROM A PREVIOUS RESTORATION OF REESTABLISHMENT (INCLUDE A PLAN VIEW DRAWING AND INDICATE WHAT WAS SET AND/OR FOUND)

DESCRIBE THE MONUMENT AND ACCESSORIES USED TO PERPETUATE THE LOCATION OF THIS CORNER. (INCLUDE A PLAN VIEW DRAWING AND INDICATE WHAT WAS SET AND/OR FOUND)

FOUND A 3" STAMPED ALUMINUM CAP.

FOUND THE FOLLOWING WITNESSES:

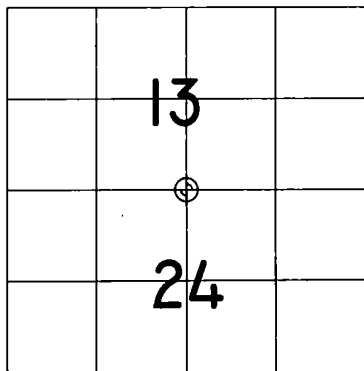
BASSWOOD 8" S15°E 13.36 FEET - SET D.H. NAIL IN TREE.
MAPLE 10" N11°E 19.95 FEET - FOUND SINGLE HEADED NAIL IN TREE.
MAPLE 10" S38°W 31.16 FEET - SET D.H. NAIL IN TREE.

SET THE FOLLOWING WITNESSES:

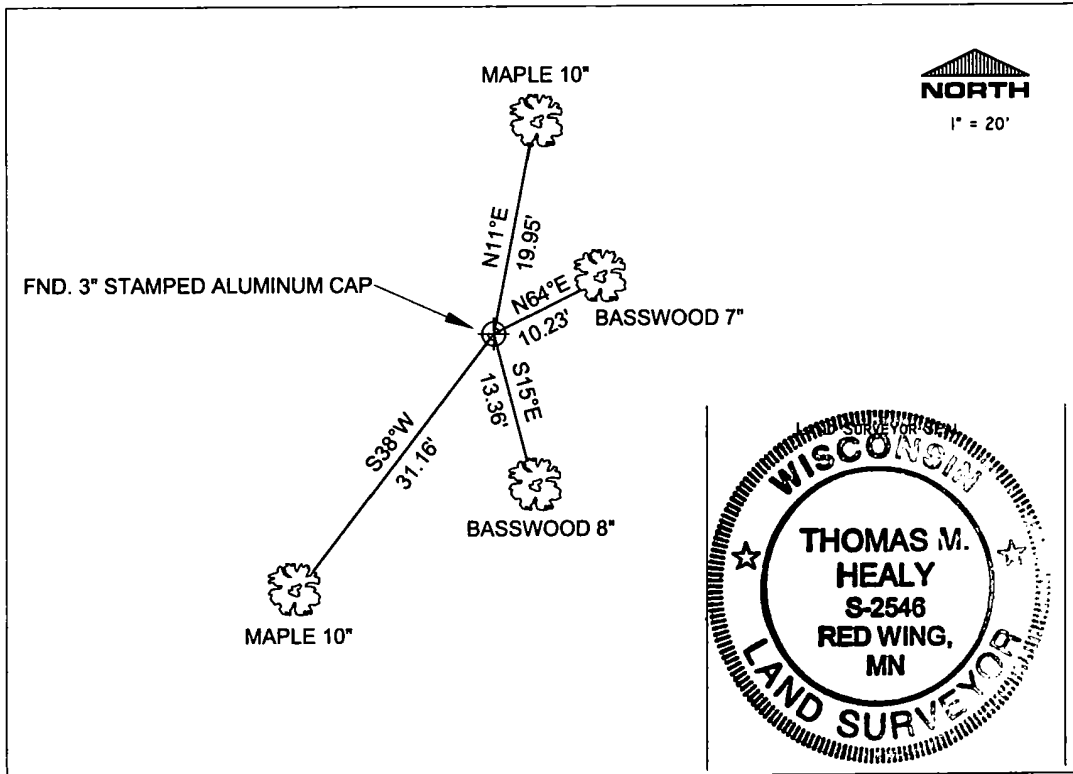
BASSWOOD 7" N64°E 10.23 FEET - SET D.H. NAIL IN TREE.

ALL TREES HAVE CHEST AND STUMP BLAZES.

THE NORTH 1/4
CORNER OF SECTION 24
T. 34 N., R. 16 E.,
FOREST COUNTY, WISCONSIN



⊕ = LOCATION OF CORNER



I, THOMAS M. HEALY R.L.S. 2546

(TYPE OR PRINT NAME) CERTIFY THAT THE CORNER LOCATION SHOWN ON THIS ABOVE RECORD WAS DETERMINED BY ME OR UNDER MY DIRECTION AND CONTROL AND THAT THIS U.S. PUBLIC LAND SURVEY MONUMENT RECORD IS CORRECT AND COMPLETE TO THE BEST OF MY KNOWLEDGE AND BELIEF.

INDEX No. N-23

SIGNATURE

DATE

4341013 0020

N-23

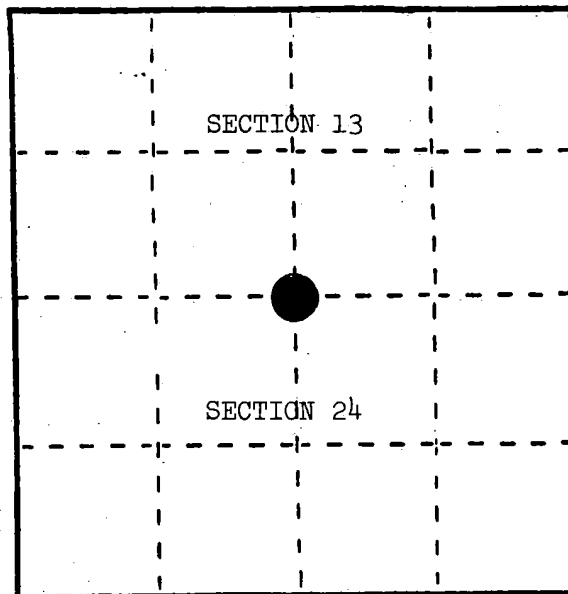
U. S. PUBLIC LAND SURVEY MONUMENT RECORD

INSTRUCTIONS: This record shall show the location of the corner and shall include all of the following nine elements (a through i).

- (a) Identify the corner by reference to the U.S. public land survey system.

○ = Corner monument restored.

Quarter corner to Sections 13 and 24, T.34N., R.16E.



- (b) Describe any record evidence, monument evidence, occupational evidence, testimonial evidence or any other material evidence you considered, and whether the monument was found or placed.

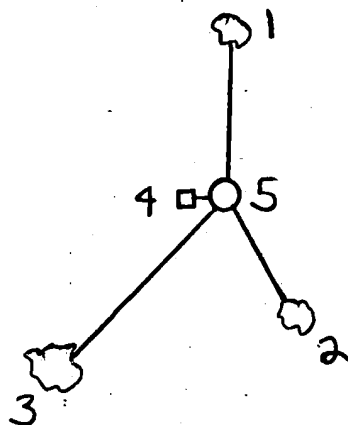
In 1858, James McBride set quarter section post with the following BTs: Hemlock, 10", S.37°E., 9 links; Sugar, 10", N.07°W., 7 links.

July 8, 1981, Milo Stefan found a 7/8" steel rod 2' long with 90° bend on end 2" long; 4-sided blazed 3" Sugar, N.30°W., approximately 30' from iron; stump holes at S.37°E., 6' and N.7°W., 5' from iron bar. Replaced iron rod with a 2" x 36" aluminum pipe.

- (c) In the plan view drawing below, provide reference ties to at least 4 witness monuments, or, if the location is within a municipality, to at least 2 witness monuments. (Witness monuments shall be made of concrete, natural stone, iron or other equally durable material.) Describe witness monuments.

- (d) Show a plan view drawing depicting the relevant monuments and reference ties which is sufficient in detail to enable accurate relocation of the corner monument if the corner monument is disturbed. Indicate north.

1. Sugar, 5", N.05°E., 19.82'
2. Basswood, 7", S.19°E., 13.49'
3. Sugar, 7", S.29°W., 31.18'
4. Steel Sign Post, West, 1.6'
5. 2" x 36" aluminum pipe stamped to identify the corner.



REGISTER'S OFFICE
Forest County, Wis.

Received for record this 24th day

of January A.D., 1985 at

10:30 o'clock A. M. and

recorded in Vol. CORNER RESTORATIONS

on page 23

Paul Archambault
REGISTER

(e) Describe any material discrepancy between the location of the corner as restored or reestablished and the location of that corner as previously restored or reestablished by distance and direction. Show the discrepancy on the plan view drawing under (d), above. Show the distances between the corner as previously restored or reestablished and (1) the corner as restored or reestablished, and (2) to at least 2 of the witness monuments shown on the drawing in (d), above.

(f) Was the corner restored through acceptance of (1) an obliterated evidence location, or, (2) a found perpetuated location?

(2) a found perpetuated location.

(g&h) Was the corner reestablished through lost corner proportionate methods? If so, show the method, including the directions and distances to other public land survey corners used as evidence or used for proportioning in determining the corner location?

No.

(1) Milo E. Stefan

(type or print name) certify that the corner location shown on this record was determined by me or under my direction and control and that this U.S. Public Land Survey Monument Record is correct and complete to the best of my knowledge and belief.

Milo E. Stefan
Signature

11/30/84
Date

