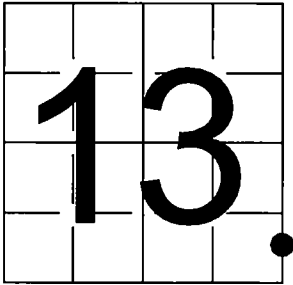


U. S. PUBLIC LAND SURVEY  
MONUMENT RECORD

NOTE: This form is intended and designed to fulfill all requirements of Wisconsin Administrative Code, Chapter A-E 7.08 U.S. Public Land Survey Monument Record (3) (a-i)

A-E 7.08(3)(a) Identity of corner:  
Meander Corner - East line Section 13,  
Township 34 North, Range 16 East  
of the Fourth Principal Meridian,  
Town of Wabeno, Forest County, Wisconsin

WISCRS - FOREST COUNTY  
N: 516,468.523 USft (XXX,XXX.XXX)  
E: 958,098.539 USft (XXX,XXX.XXX)  
Datum: NAD83 (2011)  
GNSS Method RTN  
GNSS Control WISCORS VRS



The coordinate value shown has been verified by the average of two or more GPS observations at a markedly different time. Coordinates shown in parenthesis are previously published values.

A-E 7.08(3)(b)

Original Surveyor: Thomas Sprague - November 1839  
Hemlock 18 - assumed to be Meander Corner.

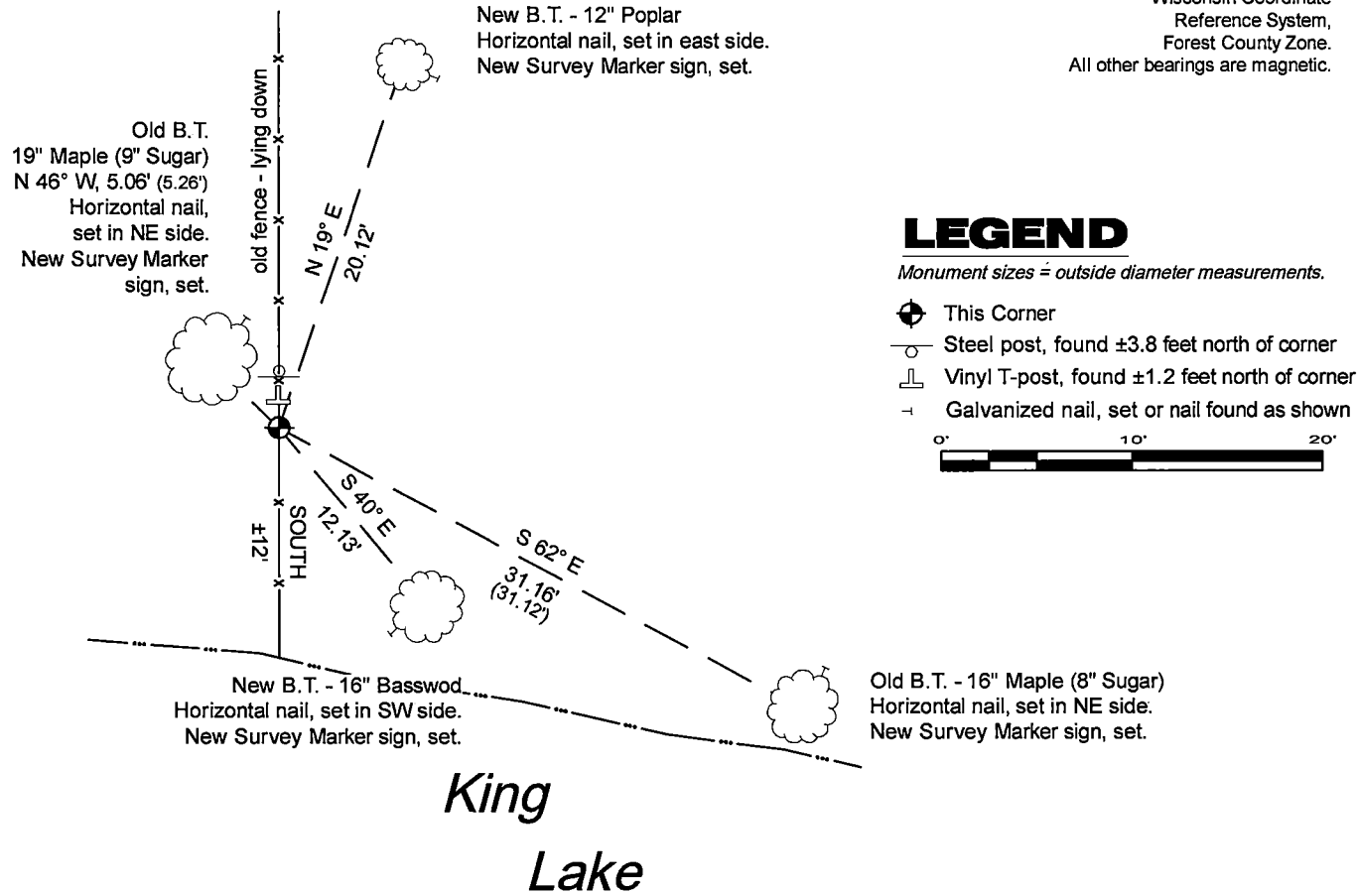
See previous U.S.Public Land Survey Monument Record - N25 - November 27, 1984 - Surveyor 1651 - Alan D. Harrison - THENCE:

- July 22, 1996 - Surveyor 1259 - Kim H. Pritzlaff - indicates this position as "Existing USFS and Marinette County monument " on county record Map #341613-19960722.
- September 27, 2004 - Surveyor 1259 - Kim H. Pritzlaff - indicates this position as "AL USFS Mon" on county record Map #341613-20041029.
- June 17, 2010 - Surveyor 2265 - Harry J. Smith - indicates this position as "Existing Forest County Monument / U.S.F.S mon." on county record Map #341613-20100617.

August 25, 2025 - found a 2.4" diameter aluminum pipe monument with a 3.25" diameter aluminum cap stamped to identify the corner location. The monument is near the west edge of a boat landing to King Lake and extends ±16" above grade. I also found 2 of Harrison's bearing trees alive and in good condition. I established 2 new reference monuments as shown below.

A-E 7.08(3)(c)(d) Plan view of corner with references to at least 4 witness monuments.

Bearings listed to the nearest second  
are referenced to the:  
Wisconsin Coordinate  
Reference System,  
Forest County Zone.  
All other bearings are magnetic.



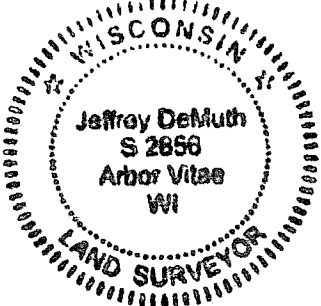
LEGEND

- Monument sizes = outside diameter measurements.
- ⊙ This Corner
  - Steel post, found ±3.8 feet north of corner
  - ⊥ Vinyl T-post, found ±1.2 feet north of corner
  - ⊥ Galvanized nail, set or nail found as shown
- 0' 10' 20'

A-E 7.08(3)(e) 1839 Surveyor used a tree, subsequent surveyors found an aluminum monument, I found 2.4" diameter aluminum pipe monument with a 3.25" diameter aluminum cap stamped to identify the corner location in 2025.

A-E 7.08(3)(f) I accept this monument in good faith as a FOUND PERPETUATED LOCATION of the corner.  
A-E 7.08(3)(g)(h) This corner was not determined through lost-corner-proportionate methods.

A-E 7.08(3)(i) I, Jeffrey L. DeMuth, Professional Land Surveyor No. S-2656, hereby certify that the corner location on this record was determined by me or under my direction and control, and that this U.S. Public Land Survey Monument Record is correct and complete to the best of my knowledge, and belief.



Signature \_\_\_\_\_ Date September 16, 2025

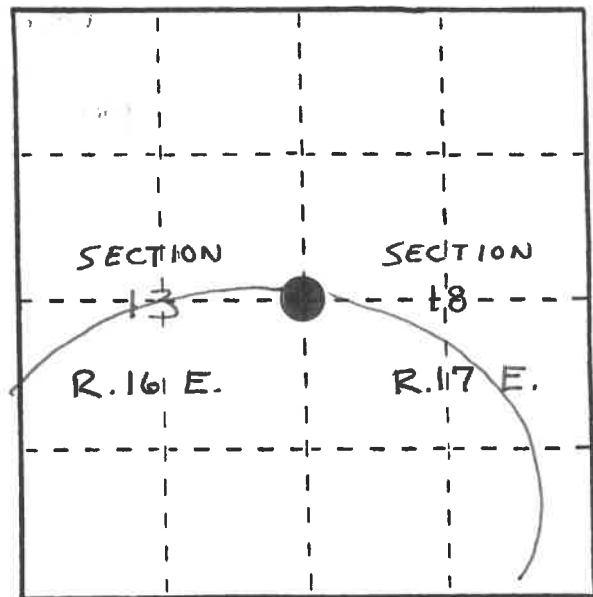
## U. S. PUBLIC LAND SURVEY MONUMENT RECORD

**INSTRUCTIONS:** This record shall show the location of the corner and shall include all of the following nine elements (a through i).

- (a) Identify the corner by reference to the U.S. public land survey system.

○ = Corner monument restored.

North Meander Corner on King's Lake, T.34N., R.16E.



- (b) Describe any record evidence, monument evidence, occupational evidence, testimonial evidence or any other material evidence you considered, and whether the monument was found or placed.

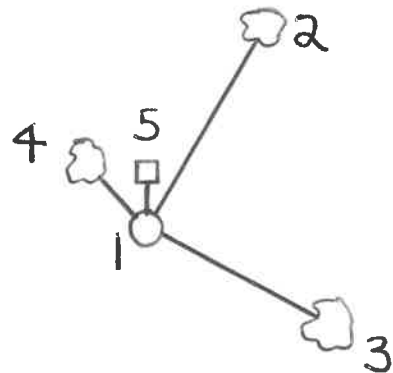
In 1858, James McBride set meander corner, which consists of an 18" Hemlock tree.

February 21, 1984, Alan Harrison found an iron pipe, as when surveyed by Forest Service in Section 13.

- (c) In the plan view drawing below, provide reference ties to at least 4 witness monuments, or, if the location is within a municipality, to at least 2 witness monuments. (Witness monuments shall be made of concrete, natural stone, iron or other equally durable material.) Describe witness monuments.

- (d) Show a plan view drawing depicting the relevant monuments and reference ties which is sufficient in detail to enable accurate relocation of the corner monument if the corner monument is disturbed. Indicate north.

1. 2" x 36" aluminum monument stamped to identify the corner.
2. White Birch, 18", N.17°E., 56.12'
3. Sugar, 8", S.62°E., 31.12'
4. Sugar, 9", N.46°W., 5.26'
5. Steel Sign Post, North, 3.6'



REGISTER'S OFFICE }  
Forest County, Wis. }

Received for record this... 24th ... day

of... January ... A. D., 1985 at

... 10:30 o'clock... A... M. and

recorded in Vol. CORNER RESTORATIONS

on page M, N-25

Paul Aschendorfer  
REGISTER

43416130500

M, N-25

N25

(e) Describe any material discrepancy between the location of the corner as restored or reestablished and the location of that corner as previously restored or reestablished by distance and direction. Show the discrepancy on the plan view drawing under (d), above. Show the distances between the corner as previously restored or reestablished and (1) the corner as restored or reestablished, and (2) to at least 2 of the witness monuments shown on the drawing in (d), above.

None.

(f) Was the corner restored through acceptance of (1) an obliterated evidence location, or, (2) a found perpetuated location?

(2) a found perpetuated location.

(g&h) Was the corner reestablished through lost corner proportionate methods? If so, show the method, including the directions and distances to other public land survey corners used as evidence or used for proportioning in determining the corner location?

No.

(i) I, Alan D. Harrison  
(type or print name) certify that the corner location shown on this record was determined by me or under my direction and control and that this U.S. Public Land Survey Monument Record is correct and complete to the best of my knowledge and belief.

Alan D. Harrison 11/27/84  
Signature Date

