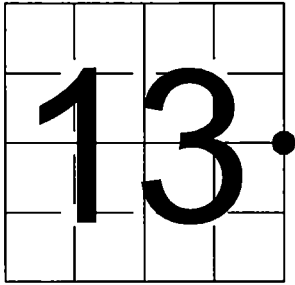


U.S. PUBLIC LAND SURVEY  
MONUMENT RECORD

NOTE: This form is intended and designed to fulfill all requirements of Wisconsin Administrative Code, Chapter A-E 7.08 U.S. Public Land Survey Monument Record (3) (a-i)

A-E 7.08(3)(a) Identity of corner:  
East 1/4 Corner Section 13,  
Township 34 North, Range 16 East  
of the Fourth Principal Meridian,  
Town of Wabeno, Forest County, Wisconsin

WISCRS - FOREST COUNTY  
N: 518,496.889 USft (XXX,XXX.XXX)  
E: 958,115.171 USft (XXX,XXX.XXX)  
Datum: NAD83 (2011)  
GNSS Method RTN  
GNSS Control WISCORS VRS



The coordinate value shown has been verified by the average of two or more GPS observations at a markedly different time. Coordinates shown in parenthesis are previously published values.

A-E 7.08(3)(b)

Original Surveyor: Thomas Sprague - November 1839  
Sugar 10 - S 39° W, 15 Links, Hemlock 18 - N 44° W, 15 Links

See previous Certified Land Corner Restoration - L25- July 2, 1976 - Surveyor 802 - Jean F. Resvick - THENCE:

- 1981 - Surveyor 1558 - Milo E. Stefan - indicates this position as "Marinette County Monument, 4" iron pipe with brass cap" on county record Map #341613-19841228.
- July 22, 1996 - Surveyor 1259 - Kim H. Pritzlaff - indicates this position as "Existing USFS and Marinette County monument " on county record Map #341613-19960722.
- June 17, 2010 - Surveyor 2265 - Harry J. Smith - indicates this position as "Existing Forest County Monument / M.C.M" on county record Map #341613-20100617.

September 2, 2005 - I found a 4" diameter iron pipe monument with a 4" diameter brass cap stamped to identify the corner location (Marinette County). The monument is on high land, ±50 feet north of a woods road T-intersection and extends ±24" above grade. I also found 3 of Resvick's bearing trees alive and in good condition. I established 1 new reference monuments as shown below.

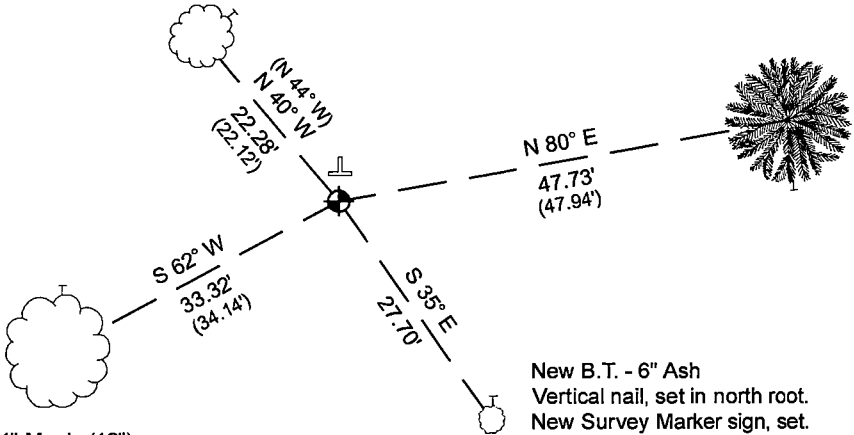
A-E 7.08(3)(c)(d) Plan view of corner with references to at least 4 witness monuments.

Bearings listed to the nearest second  
are referenced to the:  
Wisconsin Coordinate  
Reference System,  
Forest County Zone.  
All other bearings are magnetic.



Old B.T. - 14" Basswood (4")  
Horizontal nail, set in NE side.  
Top and bottom blaze visible.  
Old B.T. sign, found.

Old B.T. - 33" Hemlock (24")  
Horizontal nail, set in south side.  
Top and bottom blaze visible.  
Old B.T. sign, found.



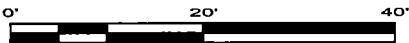
Old B.T. - 24" Maple (12")  
Vertical nail, set in north root.  
Top and bottom blaze visible.  
Old B.T. sign, found.

New B.T. - 6" Ash  
Vertical nail, set in north root.  
New Survey Marker sign, set.

LEGEND

Monument sizes = outside diameter measurements.

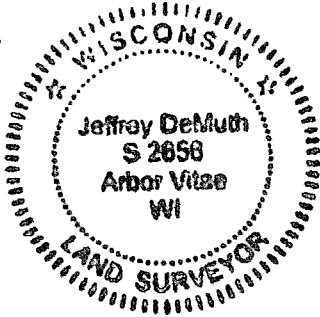
- ⊕ This Corner
- ⌚ Vinyl T-post, found ±1 foot north of corner
- ⌚ Galvanized nail, set or nail found as shown



A-E 7.08(3)(e) 1839 Surveyor set a post, subsequent Surveyors found a Marinette County monument, I found a 4" diameter iron pipe monument with a 4" diameter brass cap stamped to identify the corner location (Marinette County) in 2025.

A-E 7.08(3)(f) I accept this monument in good faith as a FOUND PERPETUATED LOCATION of the corner.  
A-E 7.08(3)(g)(h) This corner was not determined through lost-corner-proportionate methods.

A-E 7.08(3)(i) I, Jeffrey L. DeMuth, Professional Land Surveyor No. S-2656, hereby certify that the corner location on this record was determined by me or under my direction and control, and that this U.S. Public Land Survey Monument Record is correct and complete to the best of my knowledge, and belief.



SIGNATURE \_\_\_\_\_ DATE September 16, 2025

140453

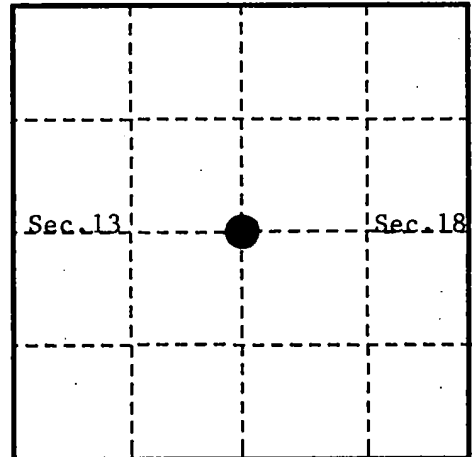
## U. S. PUBLIC LAND SURVEY MONUMENT RECORD

## INSTRUCTIONS:

This record shall show the location of the corner and shall include all of the following nine elements (a through i).

- (a) Identify the corner by reference to the U.S. public land survey system.  
 ● = Corner monument restored.

Quarter Corner to Sections 13 and 18,  
 T.34N., R.16 and 17E., Forest and  
 Marinette County, Wisconsin.



- (b) Describe any record evidence, monument evidence, occupational evidence, testimonial evidence or any other material evidence you considered, and whether the monument was found or placed.

In 1839, Tom Sprague set a wood post with the following B.T.'s: Sugar, 10", S.39W., 15 links (9.90 feet); Hemlock, 13", N.44W., 15 links (9.90 feet).

In 1933, Robert Colbe (C.C.C.) found Elm stake.

In 1935, F.P. Gould, Deputy Surveyor, Marinette County, set 4" pipe with a stamped brass cap to identify the corner.

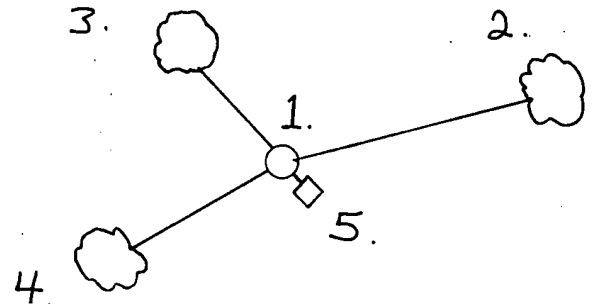
In 1976, William Cochrane (R.L.S.) found monument in place. Set the following B.T.'s: Basswood, 4", N.44W., 22.12 feet; Maple, 12", S.62W., 34.14 feet; Steel Sign Post, Southeast, 0.50 feet.

In 1990, Alan Harrison (R.L.S.) found monument in place and added new B.T.

- (c) In the plan view drawing below, provide reference ties to at least 4 witness monuments, or, if the location is within a municipality, to at least 2 witness monuments. (witness monuments shall be made of concrete, natural stone, iron or other equally durable material.)

- (d) Show a plan view drawing depicting the relevant monuments and reference ties which is sufficient in detail to enable accurate relocation of the corner monument if the corner monument is disturbed. Indicate north.

1. Marinette County Monument with stamped brass cap to identify the corner.
2. Hemlock, 24", N.80E., 47.94 feet (new).
3. Basswood, 4", N.44W., 22.12 feet.
4. Maple, 12", S.62W., 34.14 feet.
5. Steel Sign Post, Southeast, 0.50 feet.



REGISTER'S OFFICE  
 Forest County, Wis.

Received for record this 19th day  
 of SEPTEMBER A.D., 1990 at  
3:15 o'clock P.M. and recorded  
 in Vol. CORNER RESTORATIONS  
 page L-25  
Paul Hokenbrenner  
 Register of Deeds

(e) Describe any material discrepancy between the location of the corner as restored or reestablished and the location of that corner as previously restored or reestablished by distance and direction. Show the discrepancy on the plan view drawing under (d), above. Show the distances between the corner as previously restored or reestablished and (1) the corner as restored or reestablished, and (2) to at least 2 of the witness monuments shown on the drawing in (d), above.

None.

(f) Was the corner restored through acceptance of (1) an obliterated evidence location, or, (2) a found perpetuated location?

(2) a found perpetuated location

(g & h) Was the corner reestablished through lost corner proportionate methods? If so, show the method, including the directions and distances to other public land survey corners used as evidence or used for proportioning in determining the corner location?

No.

(1) I, Alan D. Harrison

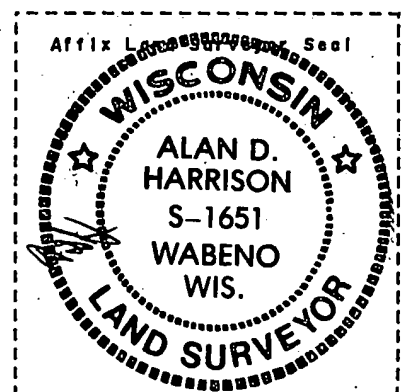
(type or print name) certify that the corner location shown on this record was determined by me or under my direction and control and that this U.S. Public Land Survey Monument Record is correct and complete to the best of my knowledge and belief.

Signature

Date

CERTIFICATE READY FOR FILING:

District Ranger



CERTIFIED LAND CORNER RESTORATION

State of Wisconsin

County of Forest

ss.

I, Jean F. Resvick, do hereby certify that on the 2nd day of May, 1975, I found evidence of the East Quarter corner of Section 13 Township 34 North, Range 16 East, Fourth Principal Meridian, as described hereon; and that from this evidence I established a new monument and accessories as described hereon to perpetuate the original location of this corner:

Description of original monument and accessories and subsequent restorations:

Surveyed by T. Sprague in November 1839  
Surveyed in 1935 by F.P. Gould and B.F. Hammes  
Set a 4" iron post for the quarter corner between Sections 13 and 18, with a brass cap stamped: Marinette Co. - Survey, T34N, R16E, T34N, R17E, 1/4, 13, 18

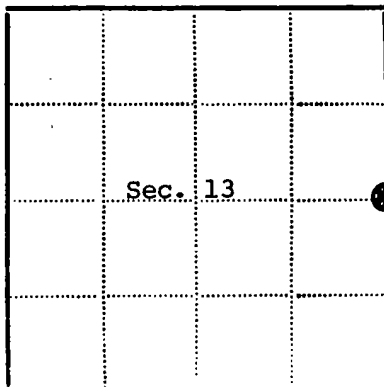
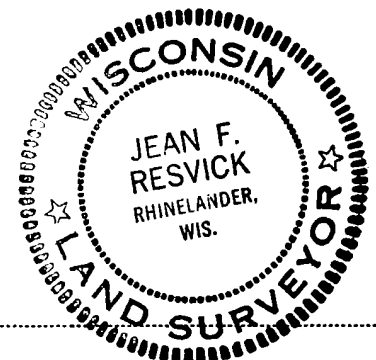
Description of corner evidence found:

Monument as described above and in place.

Description of monument and accessories I established to perpetuate the location of this corner:

Blazed and scribed the following new bearing trees:

Basswood, 4", N44°W, 22.12 feet  
Maple, 12", S62°W, 34.14 feet  
Set a steel sign post SE of the monument, 0.50 feet



● - Corner monument restored  
□ -

Resident witnesses

Dated at Rhinelander Wisconsin, this 15 day of June 1976.

Signature *Jean F. Resvick* Title Land Surveyor  
(County Surveyor, Registered Land Surveyor, or other duly authorized official)

Surveyors Registration No. S-802 DOCUMENT NUMBER 109579

Office of Register of Deeds County of Forest

I hereby certify that the within instrument was filed in this office for record on the 2nd day of July 1976, and was filed in Book No. Page No. of County Records.

Signature *Eugene Staszynski* Title Register of Deeds

Township 34 North, Range 16 East, Section 13, Index No. L-25, Page No.