

!Attention!

This PLSS corner is in the process of being updated by Forest County. An updated Tie Sheet will be available for this corner soon.

Please contact Kayla at the Forest County Land Information Department for more information.

Contact Info:

715-478-1387 or Kayla.L@co.forest.wi.us

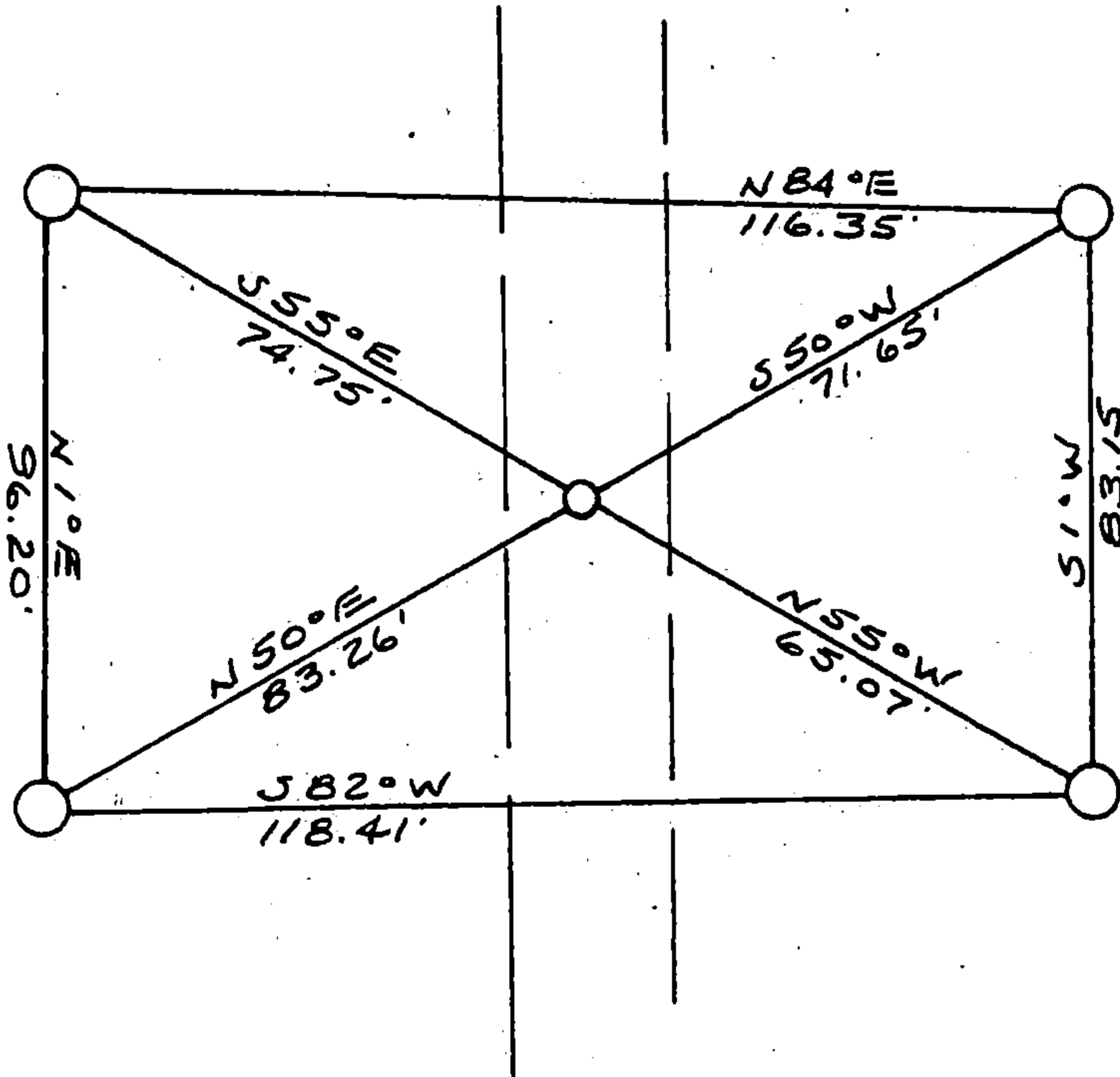
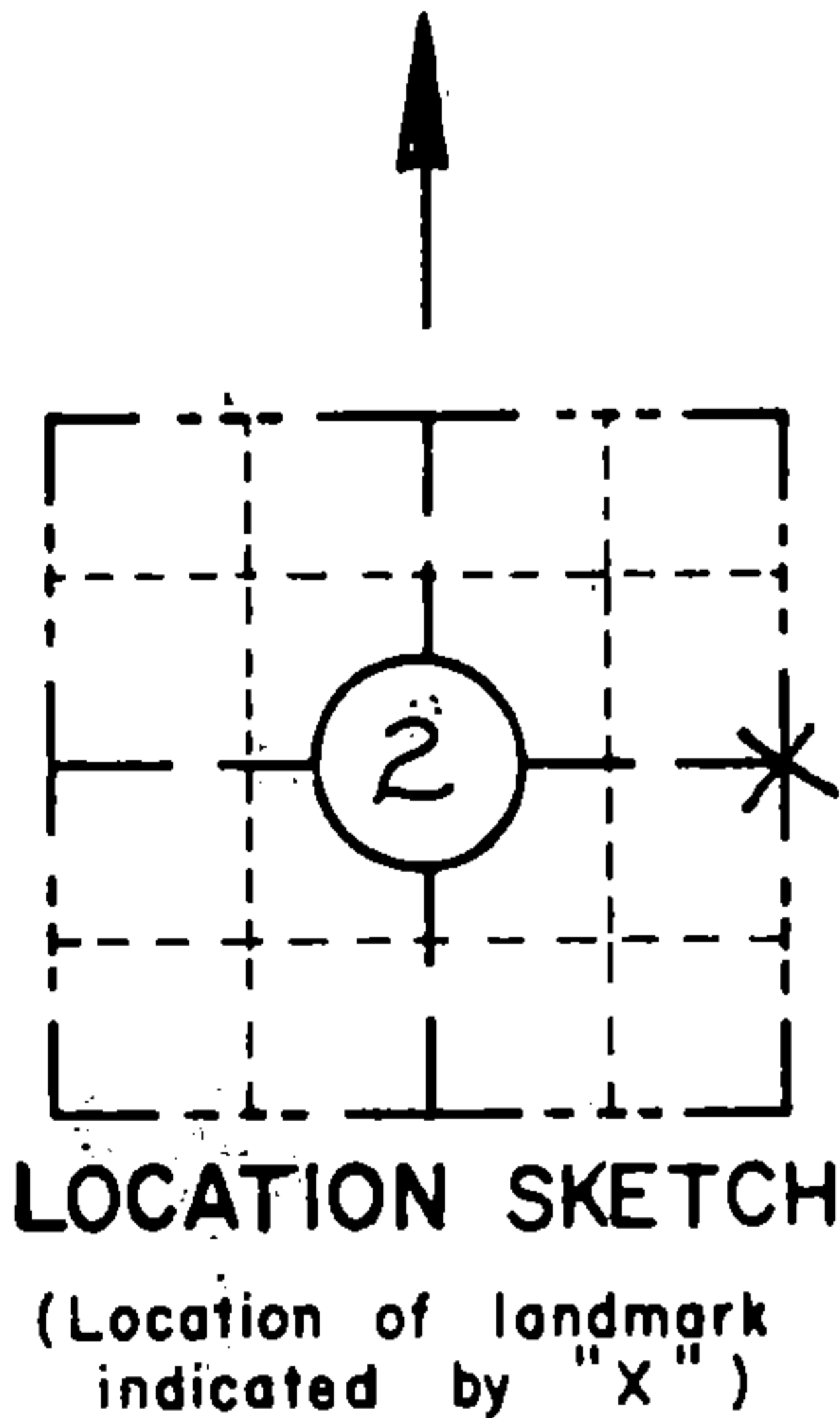
ORIGINAL ON FILE IN CO CLERK'S OFFICE
COPY HERE FOR REFERENCE

RECORD AND CERTIFICATION OF U.S.
PUBLIC LAND SURVEY CONTROL STATION
E-D-716-72

State of Wisconsin / Department of Transportation

District 7	Project I. D. 9339-06-70	Located by R.B. JOHNSON - SURVEY CREW CHIEF			
Corner E-1/4	2 SECTION	Township 35 N	Range (E,W) 12 E	County FOREST	
Wisconsin Coordinates CORNER N/A		East (X)	North (Y)	Elevation (Z)	Zone
Control Station Name		East (X)	North (Y)	Elevation (Z)	Zone
Horizontal — NORTH AMERICAN, 1927			CONTROL DATUM Vertical — MEAN SEA LEVEL, 1929 ADJUSTMENT		
Horizontal — _____ Order			SURVEY CONTROL Vertical — _____ Order		

SKETCH



I hereby certify that on the 4TH day of MAY 1993, that I did locate the above corner which was evidenced by R. R. SPIKE

_____ ; I further certify that to perpetuate the location of such corner I did, at the exact location thereof, place a permanent marker consisting of NONE

_____ ; I further certify that I did establish 4 references or witness monuments consisting of 5/8" X 24" RE-BARS WITH RED PLASTIC WDOT CAPS

_____ located as shown above:

SEAL

Signature Registered Land Surveyor	Registration No. S--	Title
------------------------------------	-------------------------	-------

43512022000

CORNER
EAST 1/4
SECTION
2
TOWN
35 N
RANGE
12 E
C-21

CERTIFIED LAND CORNER RESTORATION

Index No. C-21

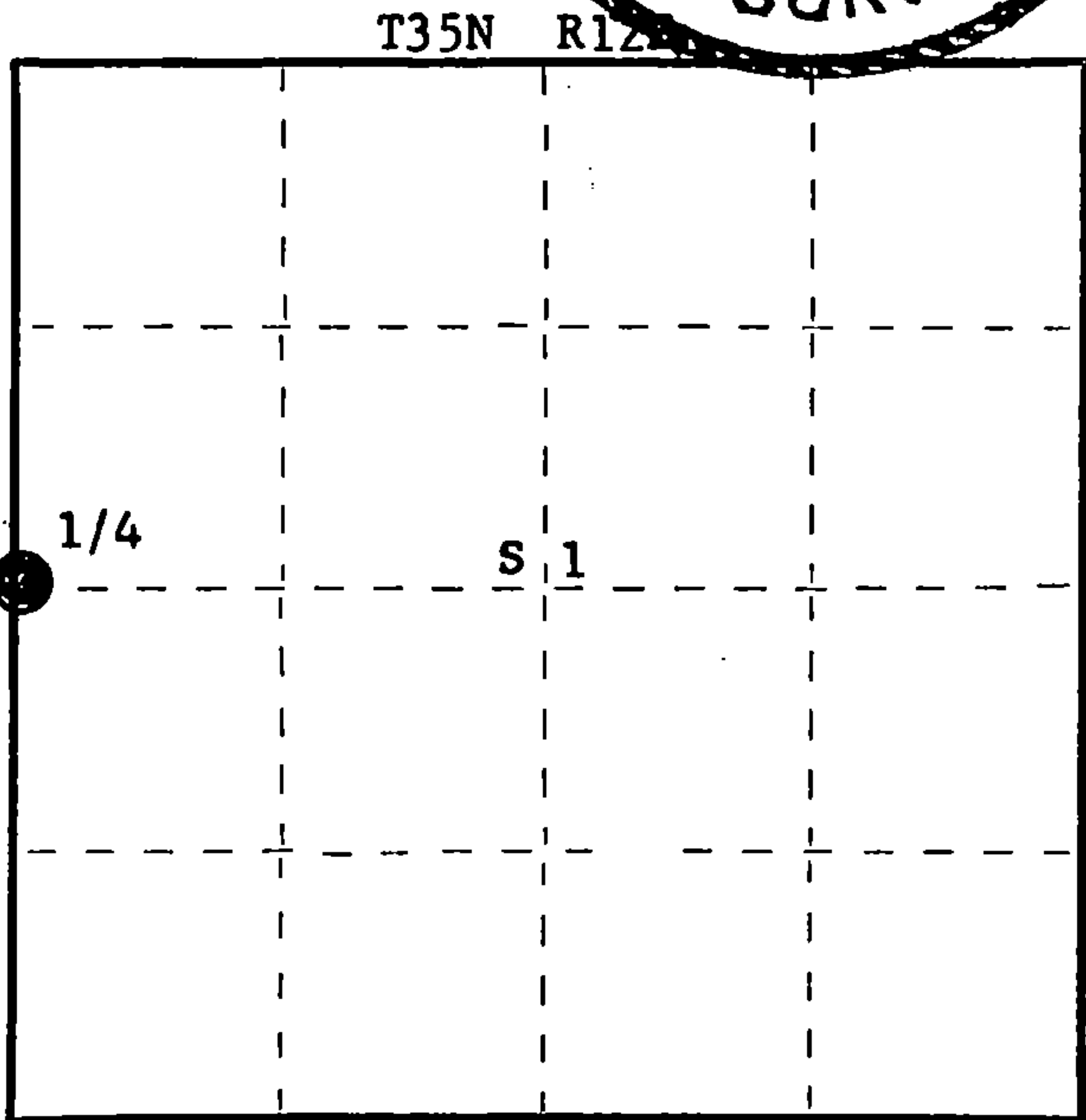
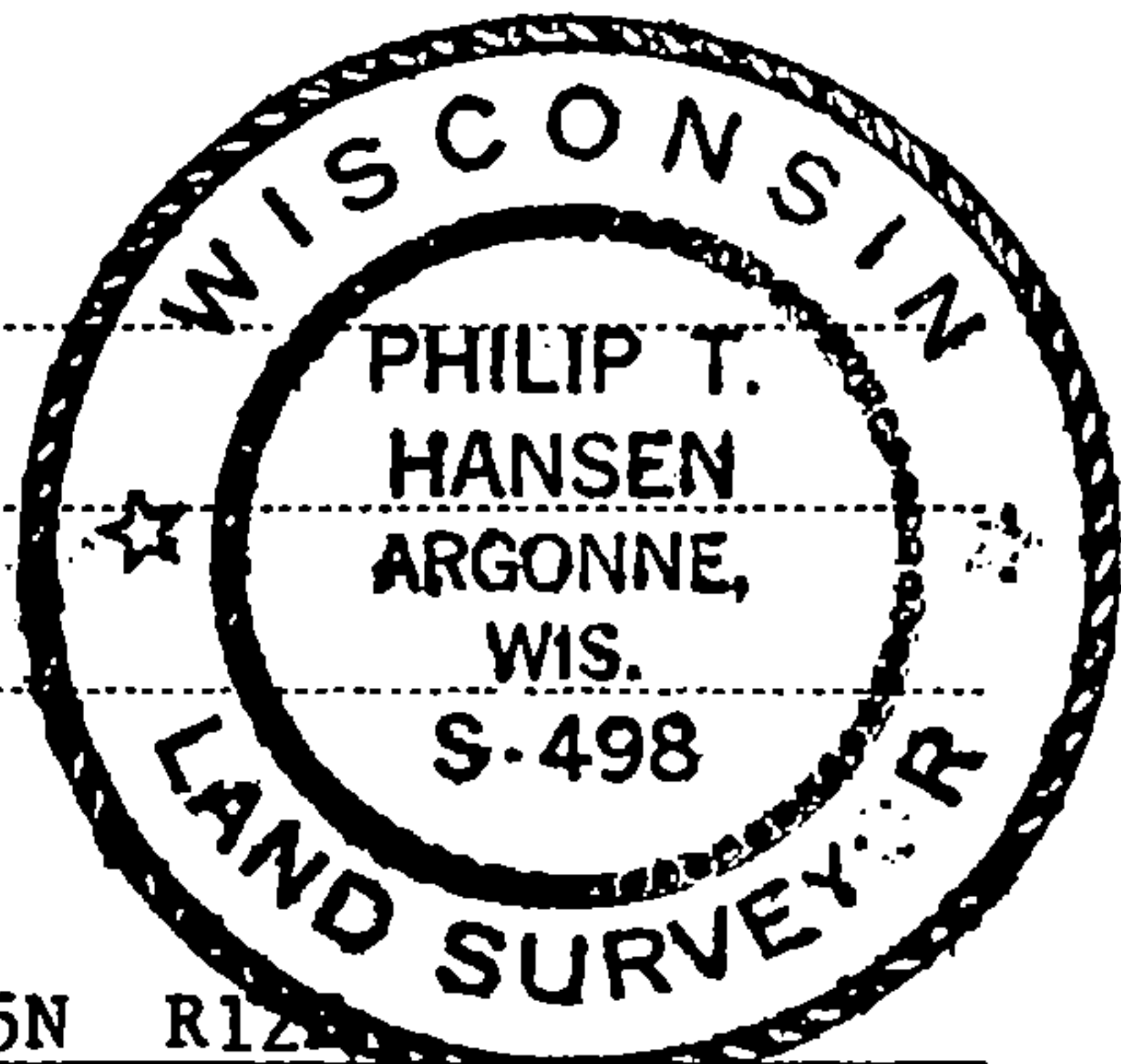
State of Wisconsin }
County of Forest } ss.

I Philip T. Hansen, do hereby
certify that on the 19th day
of May, 19 79, I ~~found~~
established the Quarter
corner of Sections 1 and 2
Township 35, North, Range
12 East, Fourth Principal Meridian,
as described hereon; and that from this evidence
I established a new monument and accessories
as described hereon to perpetuate the original
location of this corner.

Resident witnesses:

Glen Barker

Jim Claflin



○ = Corner monument restored.

History of original corner establishment:

Original corner established by J.L. Nowlin, Deputy Surveyor, in 1859.

Description of corner evidence found:

No evidence of any corner recovered. Corner established by traverse and computation. Ran traverse from 1/4 corner section 1 and 6, 35-12 and 35-13 to the C 1/4 corner of section 1. Computed bearing N 87° 33' 55" W. Projected this line west to the intersection of line between sections 1 and 2. Corner sets N 1° 14' 31" W, 2688.91 from section corners 1, 2, 11 and 12 and S 1° 14' 31" E, 2001.24 of section corners 1, 2, 35-12 and 35, 36 36-12.

Description of monument and accessories I established to perpetuate the original location of this corner.

Drove a surveyor's spike in west lane of county trunk S for true corner. Set a 2-1/2" Berntsen A-1 Federal Monument 28' west for witness corner. Monument projects 12" above ground - cap stamped:

Marked NBT's to true corner:

Sugar 10" N86°E 46.95 feet, scribed 1/4 BT.
Sugar 7" S50°E 51.60 feet, scribed 1/4 BT.
Power Pole, 3512 - 1 W6 N17°E 99.49.

T35N R12E
1/4 ²+¹ W.C.
S498 - 1979
E - 28 ft.

Dated at Rhineland, Wis., this 16th day of May, 19 80

Signature Philip T. Hansen, Title Registered Land Surveyor Registration No. S-498
(County Surveyor, Registered Land Surveyor, or other duly authorized official)

Office of Register of Deeds, County of Forest, I hereby certify that the within
instrument was filed in this office for record on the 2nd day of June, 19 80
at 8:30 o'clock A. M.

Eugene Stutzman
(Register of Deeds)

By _____ Deputy

DOCUMENT NO. **117999**

FORM 985 H. C. MILLER CO., MILWAUKEE

43512022000