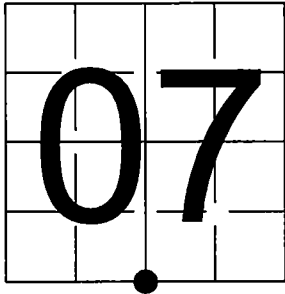


U. S. PUBLIC LAND SURVEY MONUMENT RECORD

NOTE: This form is intended and designed to fulfill all requirements of Wisconsin Administrative Code, Chapter A-E 7.08 U.S. Public Land Survey Monument Record (3) (a-i)

A-E 7.08(3)(a) Identity of corner:
South 1/4 Corner Section 07,
Township 35 North, Range 12 East
of the Fourth Principal Meridian,
Town of Nashville, Forest County,
Wisconsin

WISCRS - FOREST COUNTY
N: 553,366.281 USft (XXX,XXX.XXX)
E: 801,994.141 USft (XXX,XXX.XXX)
Datum: NAD83 (2011)
GNSS Method RTK
GNSS Control WISCORS VRS



The coordinate value shown has been verified by the average of two or more GPS observations at a markedly different time. Coordinates shown in parenthesis are previously published values.

A-E 7.08(3)(b)

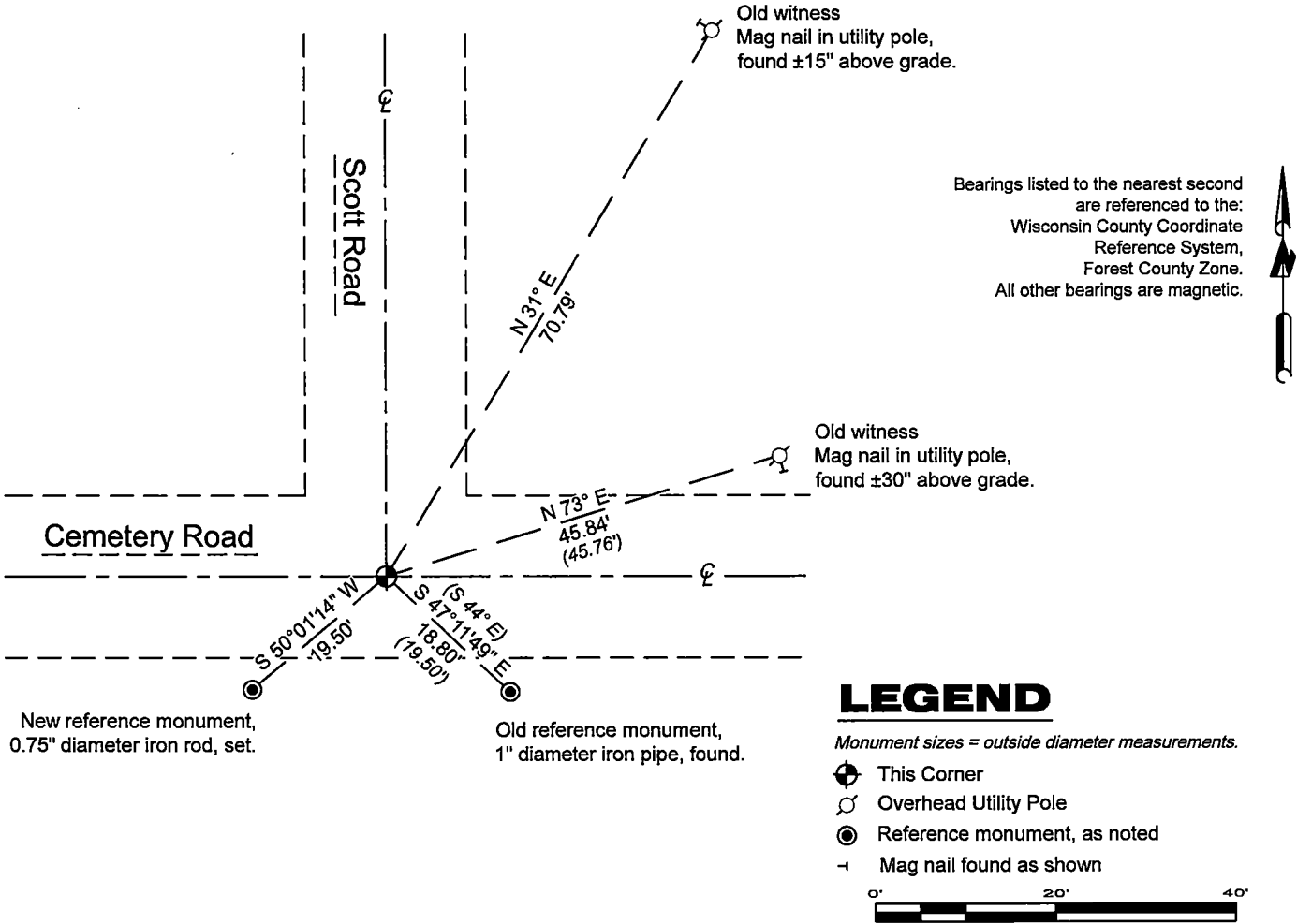
Original Surveyor: J.L. Nowlin - June 26, 1865 to July 7, 1865 (Note: Previous Monument Record lists H.C. Fellows as original surveyor)
Sugar 10 - S 66° W, 8 Links, Birch 12 - N 5° W, 21 Links

See previous U.S.Public Land Survey Monument Record - J-3- October 16, 2007 - Surveyor 1910 - Matthew E. Hoglund - THENCE:

- May 22, 2015 - Surveyor 2671 - Timothy J. Rusch - indicates this position as "RR Spike" on county record Map #351218-20150522.
- June 19, 2019 - Surveyor 2671 - Timothy J. Rusch - indicates this position as "RR Spike" on county record Map #351207-20190619.
- December 11, 2020 - Surveyor 2468 - Dean Williams - indicates this position as "RR Spike" on county record Map #351218-20201211.

June 4, 2024 - I found a railroad spike at the intersection of Scott Road and Cemetery Road centerlines. I also found 3 of Hoglunds witnesses. I established 1 new reference monuments as shown below.

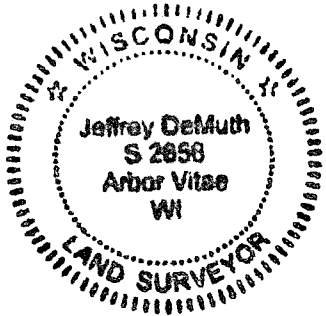
A-E 7.08(3)(c)(d) Plan view of corner with references to at least 4 witness monuments.



A-E 7.08(3)(e) 1865 Surveyor set a post, 2007 Surveyor found and accepted a railroad spike, subsequent surveyors found the same, as did I in 2024.

A-E 7.08(3)(f) I accept this monument in good faith as a FOUND PERPETUATED LOCATION of the corner.
A-E 7.08(3)(g)(h) This corner was not determined through lost-corner-proportionate methods.

A-E 7.08(3)(i) I, Jeffrey L. DeMuth, Professional Land Surveyor No. S-2656, hereby certify that the corner location on this record was determined by me or under my direction and control, and that this U.S. Public Land Survey Monument Record is correct and complete to the best of my knowledge, and belief.



SIGNATURE

August 27, 2024

DATE

43512070020

13

Document Number

195687

REGISTER'S OFFICE
Forest County, Wis.
Received for record this 17th day
of October A.D., 2007 at
9:00 o'clock A.M. and recorded
in Vol. Corner Restoration
page J-3

Kay Swanson, Deputy
Register of Deeds

Project # 506

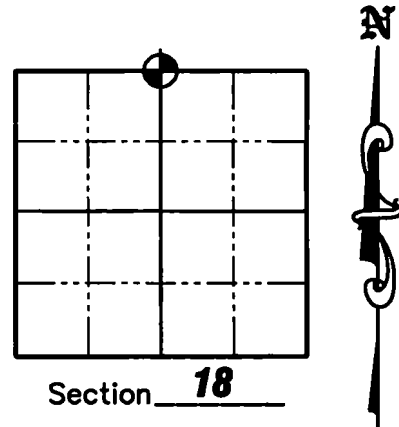
U.S. PUBLIC LAND SURVEY MONUMENT RECORD

NOTE: This form is intended and designed to fulfill all requirements of Wisconsin Administrative Code, Chapter A-E 7 .08 U.S. Public Land Survey Monument Record (3)(a)(b)(c)(d)(e)(f)(g)(h)(i). An additional sheet may be added if necessary to conform with said requirements.

(a) Corner location: Township 35 North
Range 12 East/West

Town of Nashville

County of Forest



(b)(f)(g)(h) Description of monument found at this corner and if it was accepted, state all evidence (material, testimonial, occupation, plats, records, other monuments) used as a basis for accepting. If not accepted or if nothing was found, state evidence used as a basis for establishing location. If reestablished through lost corner proportionate methods, indicate all monuments, distances and directions used to establish. Indicate type of monument found or set and sign post.

1859 - H.C. Fellows, Deputy Surveyor, set original corner. BT's: 12" Birch, N5°W, 21 links, 10" Maple, S66°W, 8 links.

June/1920 - I.R. Ritter reestablished the North 1/4 corner, but does not specify what was found or set at corner. He set new BT's: 4" Cedar, South, 38 links, 4" Cedar, N60°W, 38 links.

November/2001 - Jeffery K. Inman recovered a Railroad Spike at the North 1/4 Corner of Section 18. He does not indicate any new ties. The Railroad Spike is shown on the right-of-way plat of County Trunk Highway "B".

December/2003 - Matthew E. Hoglund recovered a Railroad Spike at the center line-center line intersection of Scott Road and Cemetery Road and accepted it as the North 1/4 Corner of Section 18. We set 4 new ties to the Railroad Spike as shown below.

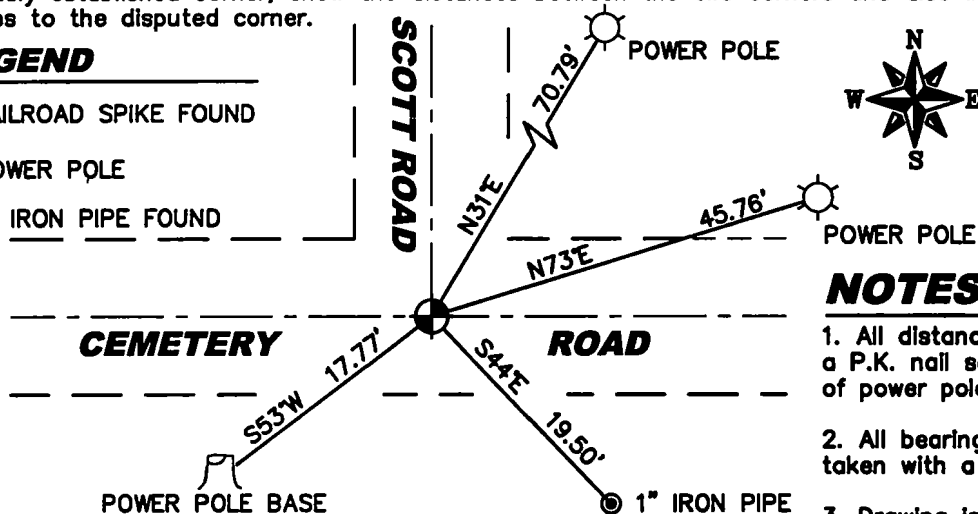
(c)(d)(e) Plan view of corner with ties to at least 4 witness monuments. If in disagreement with previously established corner, show the distances between the two corners and also indicate the ties to the disputed corner.

LEGEND

● RAILROAD SPIKE FOUND

⊙ POWER POLE

⊙ 1" IRON PIPE FOUND



NOTES

1. All distances are to a P.K. nail set in base of power pole

2. All bearings are taken with a compass.

3. Drawing is NOT to scale.

(i) I, Matthew E. Hoglund, certify that the corner location on this record was determined by me under my direction and control and that this U.S. Public Land Survey Monument is correct and complete to the best of my knowledge and belief.

Signature Matthew E. Hoglund Date 10/16/2007
HOGGLUND
S-1010
TOMAHAWK
WI

43512070020

J-3