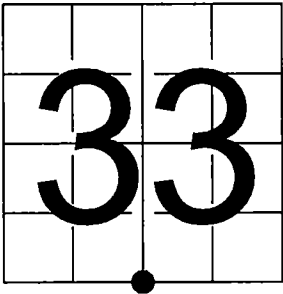


U. S. PUBLIC LAND SURVEY  
MONUMENT RECORD

NOTE: This form is intended and designed to fulfill all requirements of Wisconsin Administrative Code, Chapter A-E 7.08 U.S. Public Land Survey Monument Record (3) (a-i)

A-E 7.08(3)(a) Identity of corner:  
South 1/4 Corner Section 33,  
Township 35 North, Range 12 East  
of the Fourth Principal Meridian,  
Town of Nashville, Forest County, Wisconsin

WISCRS - FOREST COUNTY  
N: 532,311.779 USft (532,311.701)  
E: 812,273.028 USft (812,273.115)  
Datum: NAD83 (2011)  
GNSS Method RTK  
GNSS Control WISCORS VRS



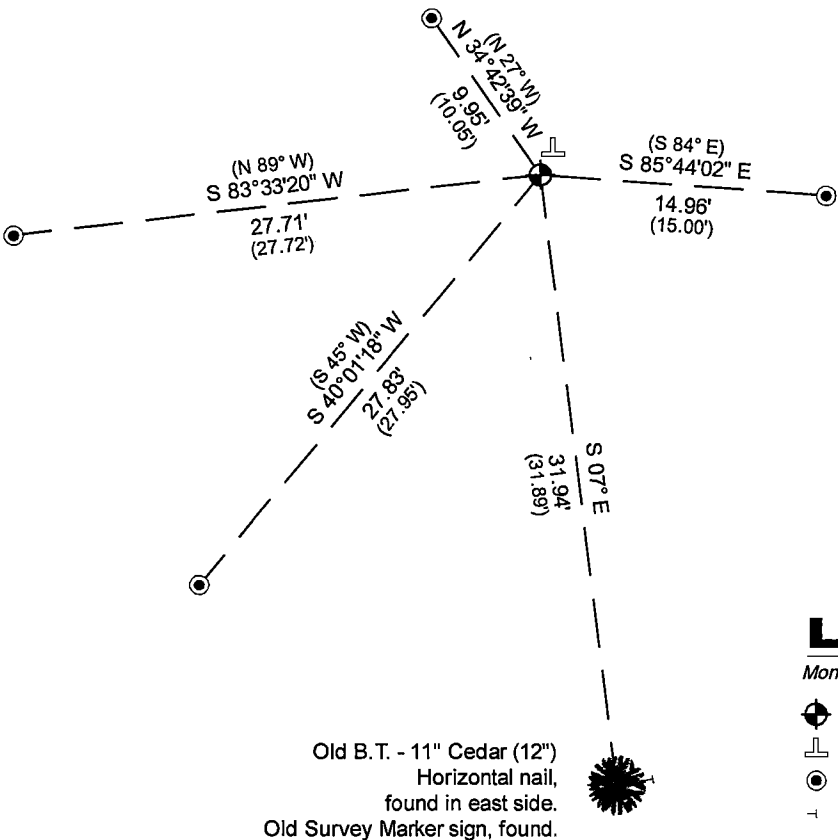
The coordinate value shown has been verified by the average of two or more GPS observations at a markedly different time. Coordinates shown in parenthesis are previously published values.

A-E 7.08(3)(b)  
Original Surveyor: Alfred Millard - May 1858  
Tamarac 10 - N 35° W, 2 Links, Tamarac 8 - S 30° E, 6 Links

See previous U.S. Public Land Survey Monument Record - Z-11 - November 11, 2018 - Surveyor 2517 - Charley G. Brinkmeier - THENCE:

January 9, 2025 - I found a 2.4" diameter aluminum pipe monument with a 3.25" diameter aluminum cap (not stamped). The monument is in a Cedar swamp and extends ±6" above grade. I also found 4 of Brinkmeier's iron pipes and one of his bearing trees. I established 0 new reference monuments as shown below.

A-E 7.08(3)(c)(d) Plan view of corner with references to at least 4 witness monuments.

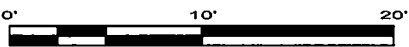


Bearings listed to the nearest second  
are referenced to the:  
Wisconsin County Coordinate  
Reference System,  
Forest County Zone.  
All other bearings are magnetic.

LEGEND

Monument sizes = outside diameter measurements.

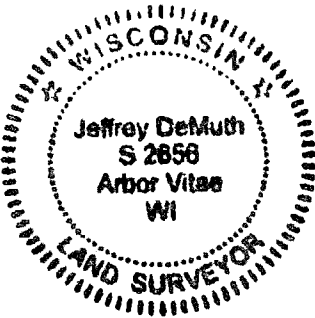
- ⊕ This Corner
- ⊥ Vinyl T-post, found ±0.3 feet NE of corner
- ⊙ 1" diameter iron pipe, found
- ⊥ 60d nail, found as shown



A-E 7.08(3)(e) 1858 Surveyor set a post, 2018 Surveyor set an aluminum monument, I found the same in 2025.

A-E 7.08(3)(f) I accept this monument in good faith as a FOUND PERPETUATED LOCATION of the corner.  
A-E 7.08(3)(g)(h) This corner was not determined through lost-corner-proportionate methods.

A-E 7.08(3)(i) I, Jeffrey L. DeMuth, Professional Land Surveyor No. S-2656, hereby certify that the corner location on this record was determined by me or under my direction and control, and that this U.S. Public Land Survey Monument Record is correct and complete to the best of my knowledge, and belief.



SIGNATURE

March 7, 2025

DATE

227287

FOREST COUNTY, WI  
CORTNEY BRITTEN CLEEREMAN  
REGISTER OF DEEDS  
RECEIVED FOR RECORD

FEB 26 2019

Time: 1:00 P. M.  
Vol.: Corner Restoration  
Page Number: 2-11

4351233 0020 2018

# U.S. PUBLIC LAND SURVEY MONUMENT RECORD

HISTORY OF ORIGINAL CORNER ESTABLISHMENT AND SUBSEQUENT RESTORATION AND DESCRIPTION OF ANY RECORD, MONUMENT OCCUPATIONAL, TESTIMONIAL OR OTHER EVIDENCE CONSIDERED:

THE ORIGINAL CORNER WAS SET BY MILLARD IN 1857 WITH THE ORIGINAL BEARING TREES OF:

10" TAMRACK - N35°W 2 LINKS

8" TAMRACK - S30°E 6 LINKS

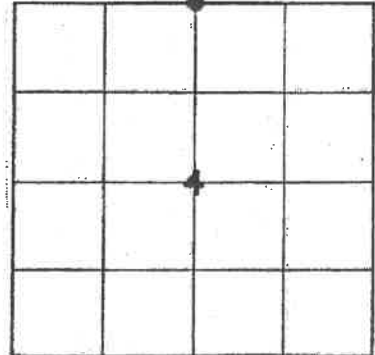
1907 - BROOKS RAN THE N-S 1/4 LINE ADDED 2 TIES OF 11" WHITE PINE N82.5°W 27 LINKS & 13" WHITE PINE S38°E 1.3 LINKS HIS 1/4 LINE DISTANCE WAS 81.41 CHAINS

1932 - HUTCHINSON SET AN ADDITIONAL TIE OF CEDAR TREE S52°W 26 LINKS

1930 - CW BORTH THEY SET ADDITIONAL TIES OF 10" TAMRACK STUMP S55°E 16 FEET AND 14" CEDAR S52.5°W 17 FEET. THEIR DISTANCES ACROSS THE NORTH LINE OF SECTION 4 WERE 2677 TO THE NW CORNER AND 2643.8 TO THE NE CORNER.

2008 - WE FOUND A FENCE CORNER INTERSECTION THAT WE USED AS THE LOCATION AND SET A 2" X 30" ALUMINUM CAP PIPE.

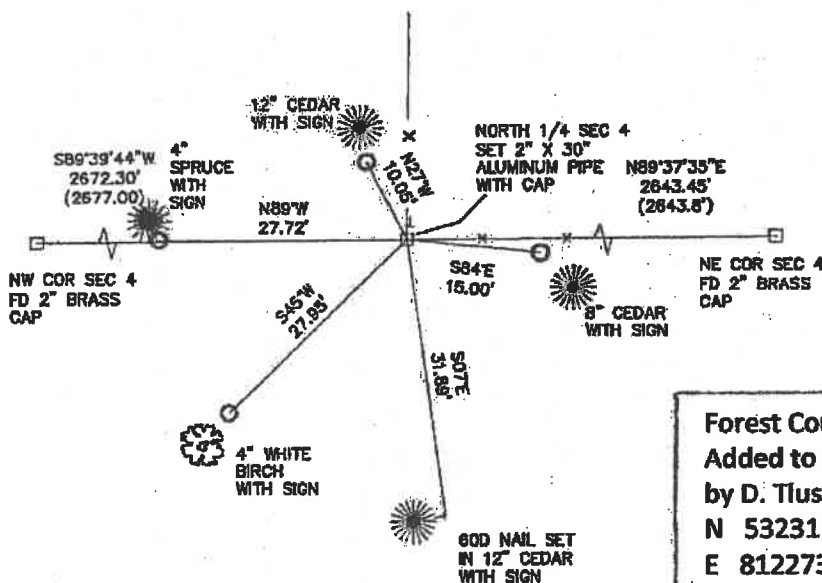
● = LOCATION OF CORNER

SECTION 4TOWNSHIP 34 NORTH, RANGE 12 EASTTOWN OF AINSWORTHLANGLADE COUNTY, WISCONSIN

CORNER WAS: (CHECK ALL THAT APPLY)

- ☐ RESTORED THROUGH ACCEPTANCE OF AN OBLITERATED EVIDENCE LOCATION
- ☒ RESTORED THROUGH ACCEPTANCE OF A FOUND PERPETUATED LOCATION
- ☐ CONSIDERED A LOST CORNER AND REESTABLISHED THROUGH LOST CORNER PROPORTIONATE METHODS (INCLUDE A PLAN VIEW DRAWING SHOWING DISTANCES AND DIRECTIONS TO OTHER PUBLIC LAND SURVEY CORNERS USED FOR PROPORTIONING AND DETERMINING THE CORNER LOCATION)
- ☐ RESTORED OR REESTABLISHED IN A LOCATION THAT DIFFERS FROM A PREVIOUS RESTORATION OR REESTABLISHMENT (INCLUDE A PLAN VIEW DRAWING AND INDICATE WHAT WAS SET AND/OR FOUND)
- ☐ CHECK IF THERE IS ADDITIONAL INFORMATION ON BACK

DESCRIBE THE MONUMENT AND ACCESSORIES USED TO PERPETUATE THE LOCATION OF THE CORNER. (INCLUDE A PLAN VIEW DRAWING AND INDICATE WHAT WAS SET AND/OR FOUND) ALSO INCLUDE FOUR TIES TO THE SECTION CORNER AND DESCRIPTION OF THE TIES.



SET 3/4" X 24" IRON PIPES  
AT ALL TIE LOCATIONS  
ALL TREES HAVE BEARING  
SIGNS

BEARINGS REFERENCED TO  
THE LANGLADE COUNTY  
COORDINATE SYSTEM

T- 6 FOOT WHITE VINYL  
POST SET

COORDINATE DATUM NAD  
83(2011)

N 458698.95  
E 660913.20

Forest County Coordinates NAD83(2011)

Added to this tie sheet on 11/20/18

by D. Tlusty

N 532311.701

E 812273.115

CHARLEY G. BRINKMEIER

(Type or print name) CERTIFY THAT THE CORNER LOCATION SHOWN ON THIS RECORD WAS DETERMINED BY ME OR UNDER MY DIRECTION AND CONTROL AND THAT THIS U.S. PUBLIC LAND SURVEY MONUMENT RECORD IS CORRECT AND COMPLETE TO THE BEST OF MY KNOWLEDGE AND BELIEF.

*[Signature]*

11-11-18  
DATE



A-11 34-12 INDEX NO.

2-11

43512330020

1/5/23 re-scanned to reflect correct recording date 2/26/19 - CCR/ROD.