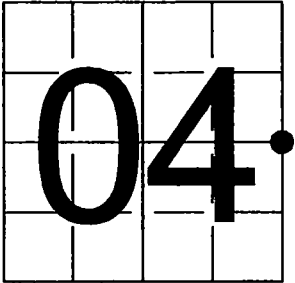


U. S. PUBLIC LAND SURVEY MONUMENT RECORD

NOTE: This form is intended and designed to fulfill all requirements of Wisconsin Administrative Code, Chapter A-E 7.08 U.S. Public Land Survey Monument Record (3) (a-f)

A-E 7.08(3)(a) Identity of corner:
East 1/4 Corner Section 04,
Township 35 North, Range 13 East
of the Fourth Principal Meridian,
Town of Lincoln, Forest County,
Wisconsin

WISCRS - FOREST COUNTY
N: 561,055.553 USft (XXX,XXX.XXX)
E: 846,720.916 USft (XXX,XXX.XXX)
Datum: NAD83 (2011)
GNSS Method RTK
GNSS Control WISCORS VRS



The coordinate value shown has been verified by the average of two or more GPS observations at a markedly different time. Coordinates shown in parenthesis are previously published values.

A-E 7.08(3)(b)

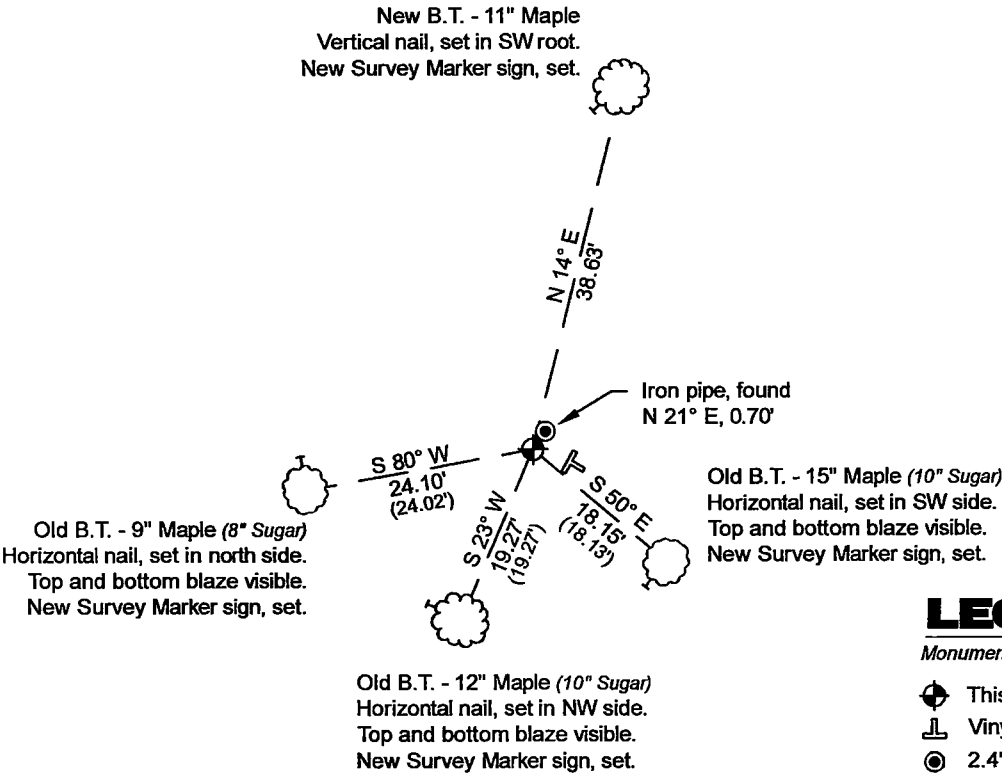
Original Surveyor: James L. Nowlin - September 11, 1865 to September 21, 1865
Sugar 12 - S 86° E, 20 Links, Lind 7 - N 78° W, 15 Links

See previous U.S. Public Land Survey Monument Record - C-13 - June 16, 2003 - Surveyor 2197 - Michael A. Tremi - THENCE:

- October 24, 2003 - Surveyor 2197 - Michael A. Tremi - indicates this position as "Forest County aluminum mon." on county record Map #351303-20031024.
- March 29, 2016 - Surveyor 2729 - Gregory S. Maines - indicates this position as "Forest County aluminum monument" on county record Map #351304-20160324.

September 4, 2024 - I found a 2.25" diameter aluminum pipe, with a 3.25" diameter aluminum cap stamped to identify the corner location. The monument is on the east edge of a woods trail and is flush grade in a mound of field stone. I also found 3 of Tremi's bearing trees and a 2.4" diameter iron pipe ±0.7' NE of the monument.
I established 1 new reference monuments as shown below.

A-E 7.08(3)(c)(d) Plan view of corner with references to at least 4 witness monuments.



Bearings listed to the nearest second are referenced to the: Wisconsin County Coordinate Reference System, Forest County Zone. All other bearings are magnetic.

LEGEND

Monument sizes = outside diameter measurements.

- ⊕ This Corner
- ⌚ Vinyl T-post, set ±2.5 feet SE of corner
- ⊙ 2.4" diameter iron pipe, found
- ⌚ Galvanized nail, set or nail found as shown

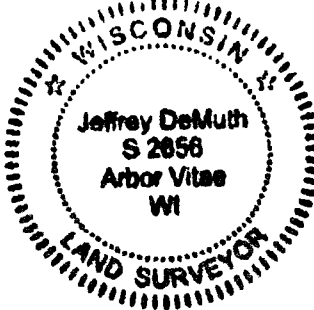


A-E 7.08(3)(e) 1865 Surveyor set a post, 2003 Surveyor found iron pipe and replaced it with an aluminum monument, 2003 and 2016 Surveyors found the same, I found a 2.25" diameter aluminum pipe, with a 3.25" diameter aluminum cap stamped to identify the corner in 2024.

A-E 7.08(3)(f) I accept this monument in good faith as a FOUND PERPETUATED LOCATION of the corner.

A-E 7.08(3)(g)(h) This corner was not determined through lost-corner-proportionate methods.

A-E 7.08(3)(i) I, Jeffrey L. DeMuth, Professional Land Surveyor No. S-2656, hereby certify that the corner location on this record was determined by me or under my direction and control, and that this U.S. Public Land Survey Monument Record is correct and complete to the best of my knowledge, and belief.



SIGNATURE

December 30, 2024

DATE

43513042000

43513042000

C13

Document Number

180134

U.S. PUBLIC LAND SURVEY MONUMENT RECORD

(As Required by WI Adm. Code)

History of original corner establishment and subsequent restorations and descriptions of any record, monument, occupational, testimonial or other evidence considered:

1865 - James Nowlin, set original corner post and made the following B.T.'s:

Sugar, 12", S 86° E, 20 lks., 13.20 feet;
Lind, 7", N 78° W, 15 lks., 9.90 feet.

2003 - I found a 3" X 48" iron pipe in a mound of stone. The iron pipe had been used by local surveyors as the 1/4 corner. I accepted the iron pipe as the best possible evidence of the 1/4 corner position. I replaced the iron pipe with a 2" X 30" Forest County Aluminum Pipe Monument and made 4 new B.T.'s as shown below.

Corner was: (Check All That Apply)

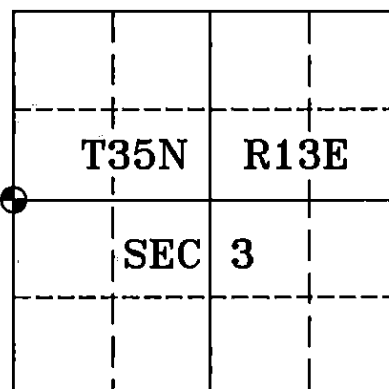
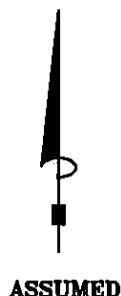
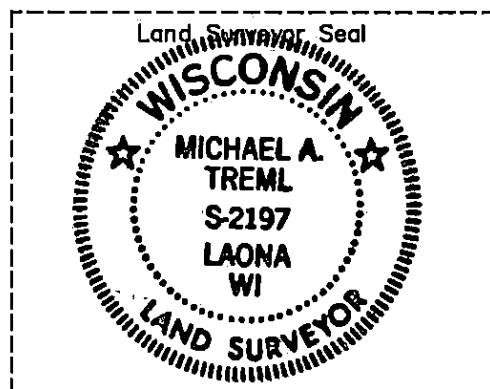
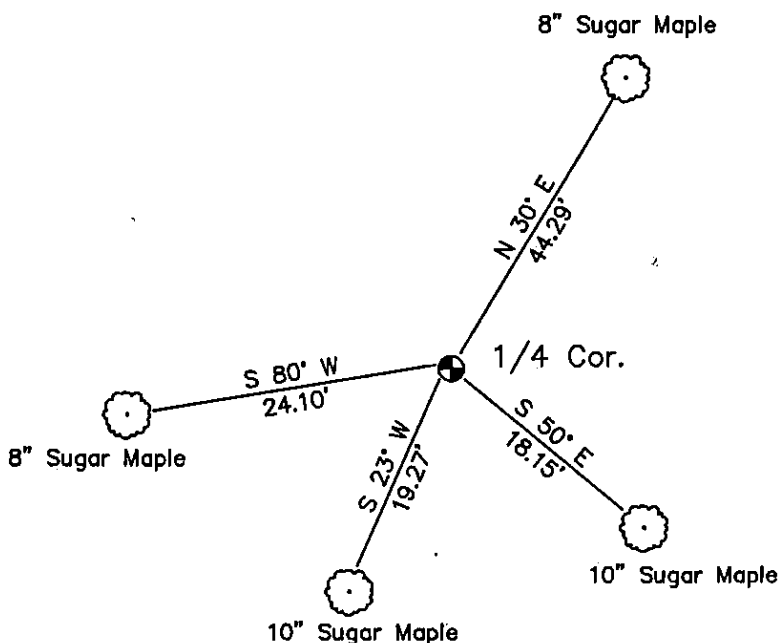
- ☐ Restored through acceptance of an obliterated evidence location.
- ☒ Restored through acceptance of a found perpetuated location.
- ☐ Considered a lost corner and reestablished through lost corner proportionate methods (include a plan view drawing showing distances and directions to other Public Land Survey Corners used for proportioning and determining the corner location).
- ☐ Restored or reestablished in a location that differs from a previous restoration or reestablishment (include a plan view drawing and indicate what was set and/or found).

Describe the monument and accessories used to perpetuate the location of this corner (include a plan view drawing and indicate what was set and/or found).

LEGEND:

- Set 2" X 30" Aluminum Pipe Monument

Note: All distances are taken to nail in side of tree.



I, Michael A. Trembl, RLS
(type or print name) certify that the corner location shown on this record was determined by me or under my direction and control and that this U.S. Public Land Survey Monument Record is correct and complete to the best of my knowledge and belief.

Michael A. Trembl 6/16/03
Signature Date

The West Quarter corner of
Section 3 T. 35 N., R. 13 E.
Forest County, WI

Index No. C-13

43513042000

C-13