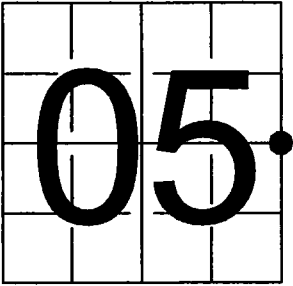


U. S. PUBLIC LAND SURVEY MONUMENT RECORD

NOTE: This form is intended and designed to fulfill all requirements of Wisconsin Administrative Code, Chapter A-E 7.08 U.S. Public Land Survey Monument Record (3) (a-i)

A-E 7.08(3)(a) Identity of corner:
East 1/4 Corner Section 05,
Township 35 North, Range 13 East
of the Fourth Principal Meridian,
Town of Lincoln, Forest County,
Wisconsin

WISCRS - FOREST COUNTY
N: 561,071.417 USft (XXX,XXX.XXX)
E: 841,395.676 USft (XXX,XXX.XXX)
Datum: NAD83 (2011)
GNSS Method RTK
GNSS Control WISCRS VRS



The coordinate value shown has been verified by the average of two or more GPS observations at a markedly different time. Coordinates shown in parenthesis are previously published values.

A-E 7.08(3)(b)

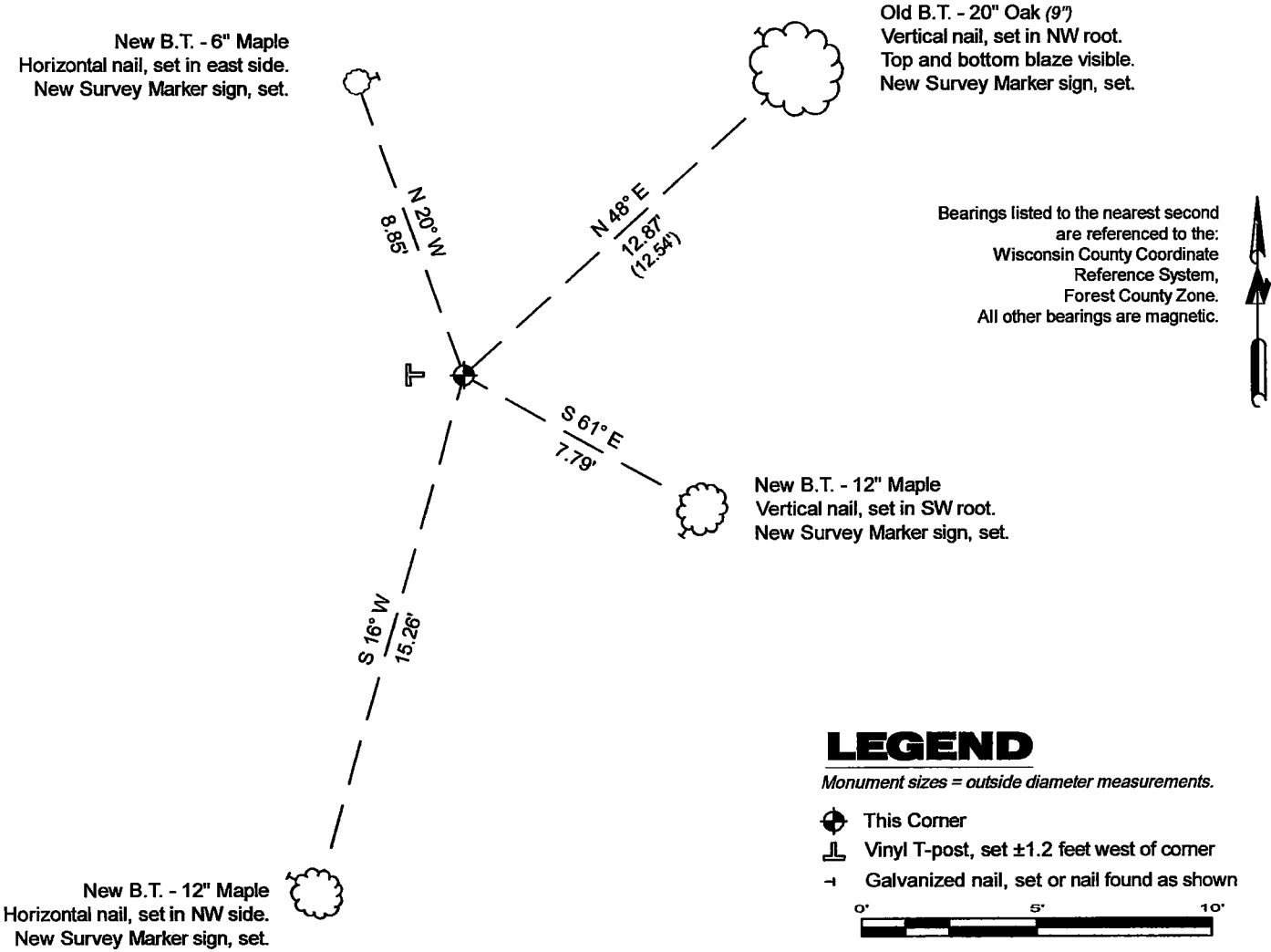
Original Surveyor: James L. Nowlin - September 11, 1865 to September 21, 1865
Birch 15 - N 80° E, 20 Links, Hemlock 44 - S 49° W, 7 Links

See Restoration of Lost Original Government Survey Corner - C 9- January 12, 1965- Surveyor 463 - Neal Sperhake - THENCE:

- May 15, 2001 - Surveyor 2197 - Michael A. Treml - indicates this position as "1" dia. iron pipe W/4" stamped aluminum cap" on county record Map #351304-20010515.

September 4, 2024 - I found a 1.3" diameter galvanized iron pipe monument with a 4" diameter aluminum cap stamped to identify the corner location. The monument extends ±17" above grade and is ±40 feet east of a snowmobile trail. I also found 1 of Sperhake's bearing trees. I established 43 new reference monuments as shown below.

A-E 7.08(3)(c)(d) Plan view of corner with references to at least 4 witness monuments.

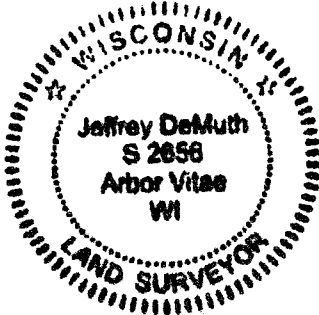


A-E 7.08(3)(e) 1865 Surveyor set a post, 1965 Surveyor set a 1" diameter iron pipe with an aluminum cap, 2001 Surveyor found a 1" dia. iron pipe W/4" stamped aluminum cap. I found a 1.3" diameter galvanized iron pipe monument with a 4" diameter aluminum cap stamped to identify the corner location in 2024.

A-E 7.08(3)(f) I accept this monument in good faith as a FOUND PERPETUATED LOCATION of the corner.

A-E 7.08(3)(g)(h) This corner was previously determined through lost-corner-proportionate methods.

A-E 7.08(3)(i) I, Jeffrey L. DeMuth, Professional Land Surveyor No. S-2656, hereby certify that the corner location on this record was determined by me or under my direction and control, and that this U.S. Public Land Survey Monument Record is correct and complete to the best of my knowledge, and belief.



SIGNATURE

December 30, 2024

DATE

43513052000

43513 052000

C9

State of Wisconsin

County of FOREST

ss. RESTORATION OF LOST ORIGINAL GOVERNMENT SURVEY CORNER.

I NEAL SPERHAKE, do hereby certify that on the SECOND day of SEPTEMBER, 19 64, I established the QUARTER SECTION CORNER BETWEEN SECTIONS 4 AND 5, TOWNSHIP 35 NORTH, RANGE 13 EAST, Fourth Principal Meridian, as described hereon.

History: This corner was established during the original survey of this township, as noted in the original field notes for the original survey of T35N-R13E, 4th. p.m.

Description of monument and accessories I established to perpetuate the location of this corner:

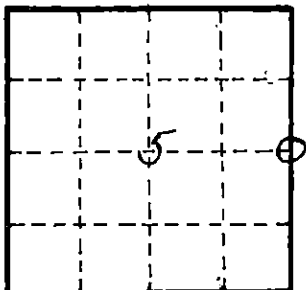
At the point determined for the location of the corner I emplaced a:

GALVANIZED IRON PIPE, THREE FEET LONG, ONE INCH IN DIAMETER, WITH ALUMINUM CAP DENOTED AS, "KIMBERLY CLARK CORP. T35N $\frac{1}{4}$ BTWN. 5 & 4 R13E SPERHAKE RLS 463 9/2/64."

The pipe is witnessed by:

Oak 9 N 48°E 19 links. (SCRIBED $\frac{1}{4}$ S 4 NBT).
W. Birch 9 S 58°W 24 links. (SCRIBED $\frac{1}{4}$ S 5 NBT).

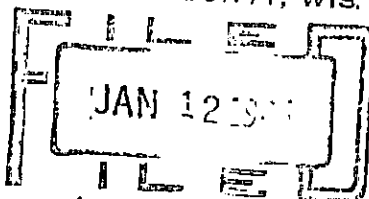
Description as to how corner was located: No evidence of the original corner is present. Thus, set by proportionate measurement. The section corners $\frac{1}{2}$ mile north and south, respectively, have been previously established with a distance between them of 75.03 chains. The original length of the line between 4 and 5 was 75.60 chains. The original length of the line between the corner of 4, 5, 8, 9 and the quarter corner between 4 and 5 was 40 chains. Thus, set the quarter corner 39.71 chains north of the corner of 4, 5, 8, 9, 35.32 chains south of the corner of 32, 33, 4, 5, and on a straight line between them.



0 = Corner monument restored

89576

FOREST COUNTY OFFICE
FOREST COUNTY, WIS.



Anna Peterson, Register of Deeds

Resident witnesses _____

Dated at Crandon, Wisconsin, this 12th day of January, 1965.

Signature Neal Sperhake

Title Registered Land Surveyor Registration No. 463

Office of Forest County of Wisconsin

I hereby certify that the within instrument was filed in this office on the 12th day of January 1965, and was signed and sworn to of County Records. before me.

Surveyor's Seal

Signature Anna Peterson Title Notary Public

43513052000

Index No. 69