

U. S. PUBLIC LAND SURVEY
MONUMENT RECORD

NOTE: This form is intended and designed to fulfill all requirements of Wisconsin Administrative Code,
Chapter A-E 7.08 U.S. Public Land Survey Monument Record (3) (a-i)

A-E 7.08(3)(a) Identity of corner:
Meander Corner - South line Section 15,
Township 35 North, Range 13 East
of the Fourth Principal Meridian,
Town of Lincoln, Forest County, Wisconsin

WISCRS - FOREST COUNTY
N: 548,011.495 USft (XXX,XXX.XXX)
E: 849465.632 USft (XXX,XXX.XXX)
Datum: NAD83 (2011)
GNSS Method RTK
GNSS Control WISCORS VRS

The coordinate value shown has been verified by the average of two or more GPS observations
at a markedly different time. Coordinates shown in parenthesis are previously published values.

A-E 7.08(3)(b)

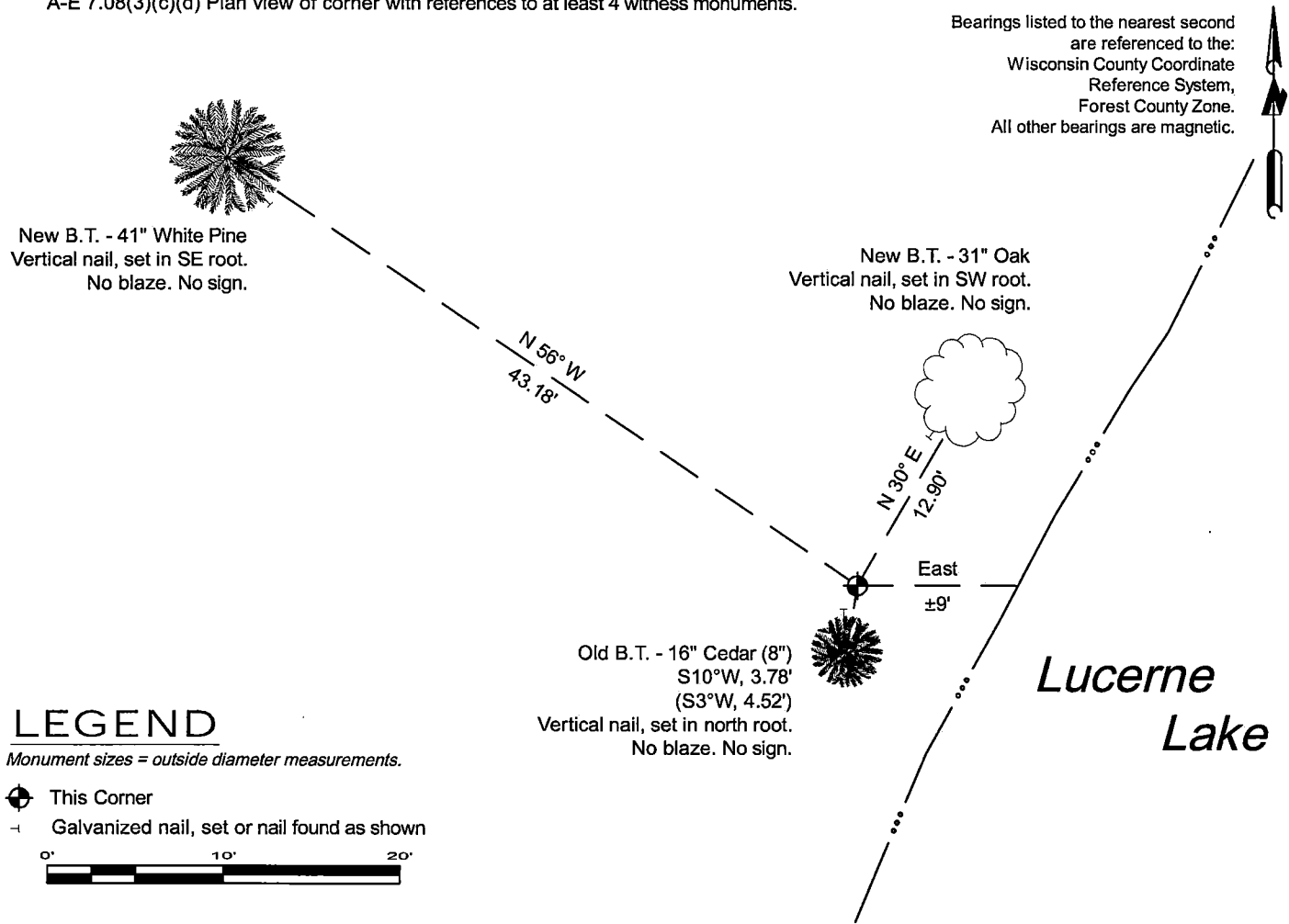
Original Surveyor: James L. Nowlin - September 11, 1865 to September 21, 1865
Hemlock 10 - S 60° W, 3 Links, Pine 12 - N 70° E, 7 Links

See previous Certified Land Corner Restoration - N-16 - November 30, 1976 - Surveyor 887 - Thomas R. Arnott - THENCE:

- October 14, 1982 - Surveyor 1394 - Norman A. Harrison - indicates this position as "Forest County monument" on county record Map #351322-19821014.
- October 12, 1998 - Surveyor 1795 - Devon Vanden Heuvel - indicates this position as "existing aluminum monument" on county record Map #351322-19981012.
- May 10, 2023 - Surveyor 1763 - Thomas A. Boettcher - indicates this position as "Forest Co. aluminum cap monument" on county record Map #351315-20230510.

May 5, 2025 - I found a 2.4" diameter aluminum pipe monument with a 3.25" diameter aluminum cap stamped to identify the monument's location. The monument is ±9 feet from the shore of Lake Lucerne and extends ±24" above grade. I also found 1 of Arnott's bearing trees. I established 2 new reference monuments as shown below.

A-E 7.08(3)(c)(d) Plan view of corner with references to at least 4 witness monuments.



A-E 7.08(3)(e) 1865 Surveyor set a post, 1976 Surveyor set a Forest County aluminum monument, subsequent surveyors found the same, as did I in 2025.

A-E 7.08(3)(f) I accept this monument in good faith as a FOUND PERPETUATED LOCATION of the corner.

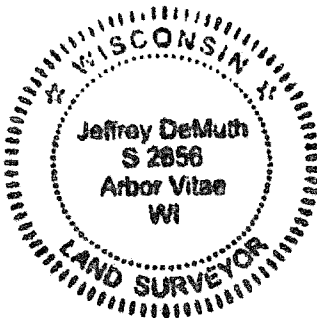
A-E 7.08(3)(g)(h) This corner was not determined through lost-corner-proportionate methods.

A-E 7.08(3)(i) I, Jeffrey L. DeMuth, Professional Land Surveyor No. S-2656, hereby certify that the corner location on this record was determined by me or under my direction and control, and that this U.S. Public Land Survey Monument Record is correct and complete to the best of my knowledge, and belief.

Signature

May 6, 2025

Date



43513150017

4351315 0017

N-16

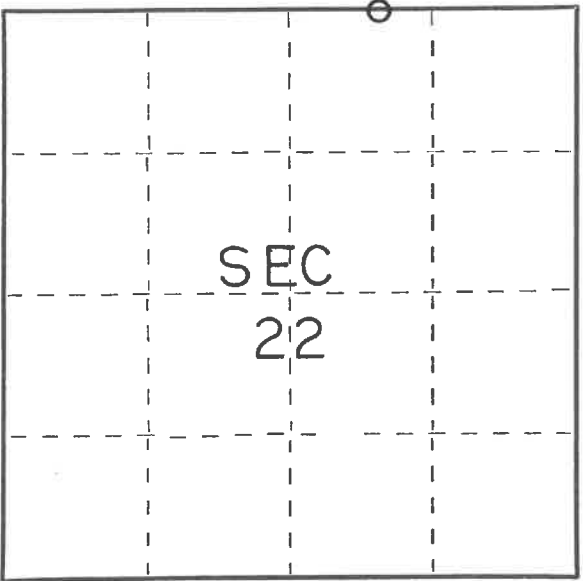
CERTIFIED LAND CORNER RESTORATION

Index No. N-16

State of Wisconsin }
County of Forest } ss.

I Thomas R. Arnott, do hereby
certify that on the 29 day
of Nov., 19 76, I found
evidence of the M.C.
corner of 15 & 22
Township 35, North, Range
13 E, Fourth Principal Meridian,
as described hereon; and that from this evidence
I established a new monument and accessories
as described hereon to perpetuate the original
location of this corner.

Resident witnesses:



○ = Corner monument restored.

History of original corner establishment:

Original survey by James Nowlin Sept. 11 - Sept. 21, 1865

Hemlock	10	S60W	3 Lks.
Pine	12	N70E	7 Lks.

Description of corner evidence found:

1 1/2" iron pipe well point found



Description of monument and accessories I established to perpetuate the original location of this corner.

Replaced iron pipe with a Forest Co. Aluminum Monument

Ties:

Cedar	8	S3W	4.52 feet (lawn tree-no BT blaze)
SE cor. house		N89W	70.29 feet

Dated at Crandon, Wis., this 30 day of Nov., 19 76.

Signature Thomas R. Arnott Title Surveyor Registration No. S-887
(County Surveyor, Registered Land Surveyor, or other duly authorized official)

Office of Register of Deeds, County of Forest, I hereby certify that the within
instrument was filed in this office for record on the 30 day of Nov., 19 76
at 11:30 o'clock A M.

Eugene Stetson Document Number 110639
(Register of Deeds)

By _____ Deputy

43513150017