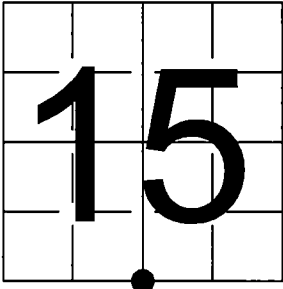


U.S. PUBLIC LAND SURVEY
MONUMENT RECORD - ADDENDUM

NOTE: This form is intended and designed to fulfill all requirements of Wisconsin Administrative Code, Chapter A-E 7.08 U.S. Public Land Survey Monument Record (3) (a-i)

A-E 7.08(3)(a) Identity of corner:
South 1/4 Corner Section 15,
Township 35 North, Range 13 East
of the Fourth Principal Meridian,
Town of Lincoln, Forest County, Wisconsin

WISCRS - FOREST COUNTY
N: 547,977.456 USft (XXX,XXX.XXX)
E: 849,034.823 USft (XXX,XXX.XXX)
Datum: NAD83 (2011)
GNSS Method RTK
GNSS Control WISCORS VRS



The coordinate value shown has been verified by the average of two or more GPS observations at a markedly different time. Coordinates shown in parenthesis are previously published values.

A-E 7.08(3)(b)

Original Surveyor: James L. Nowlin - September 11, 1865 to September 21, 1865
Birch 40 - N 23° E, 10 Links, Birch 30 - S 10° W, 25 Links

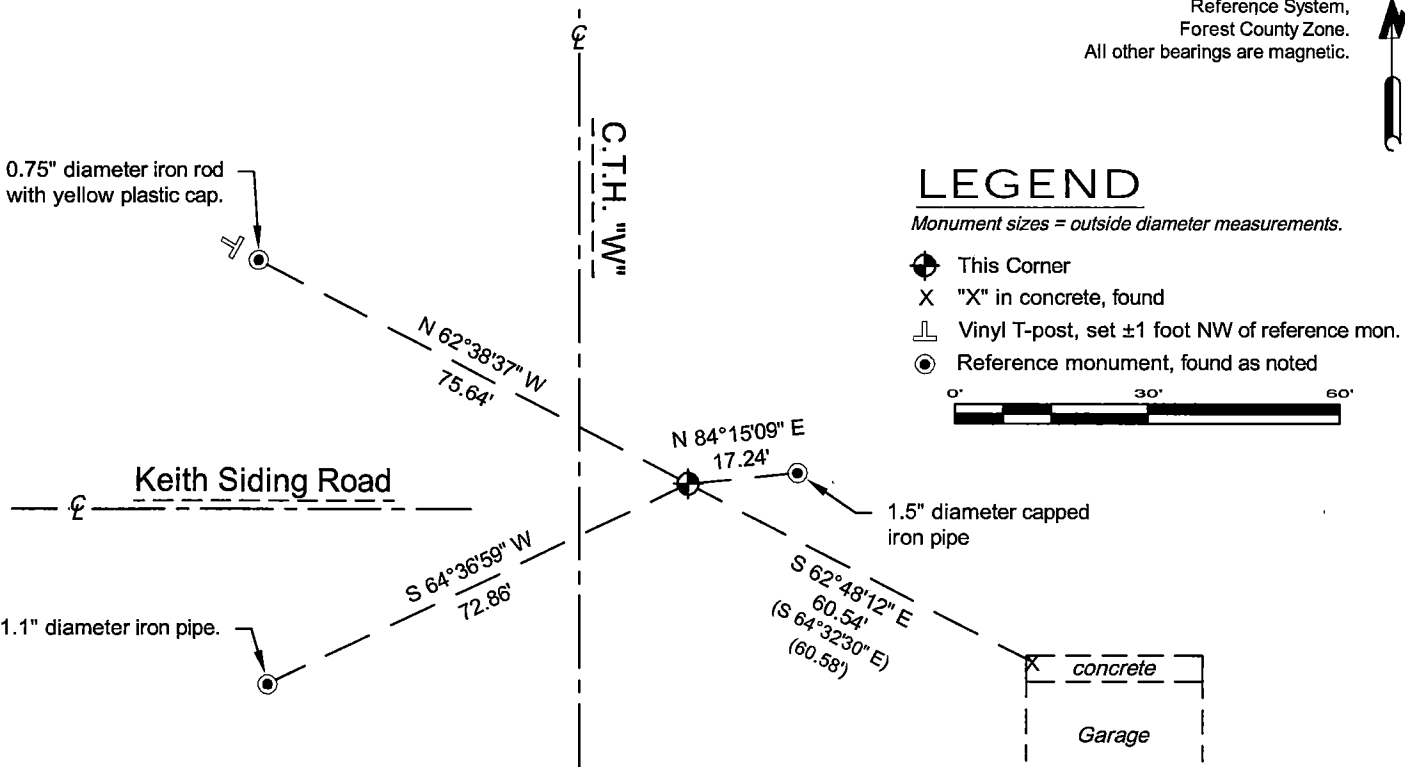
See previous U.S. Public Land Survey Monument Record - N-15 - April 9, 1994 - Surveyor 973 - Wayne G. Dobbratz - THENCE:

- June 28, 1996 - Surveyor 887 - Thomas R. Arnott - indicates this position as "monument found" on county record Map #351322-19960628.
- November 10, 1999 - Surveyor 973 - Wayne G. Dobbratz - indicates this position as "Forest Co. aluminum monument" on county record Map #351315-19991110.
- October 12, 1998 - Surveyor 1795 - Devon Vanden Heuvel - indicates this position as "existing aluminum monument" on county record Map #351322-19981012.
- July 28, 1999 - Surveyor 1616 - Stephen J. Favorite - indicates this position as "nail found over existing iron pipe" on county record Map #351322-19990728.
- September 22, 2000 - Surveyor 1616 - Stephen J. Favorite - indicates this position as "3" dia. alum. capped monument" on county record Map #351322-20000922.
- July 19, 2017 - Surveyor 809-8 - Micheal S. Hess - indicates this position as "3/4" rebar" on county record Map #351315-20170719.
- September 20, 2021 - Surveyor 809-8 - Micheal S. Hess - indicates this position as "3/4" iron rod" on county record Map #351315-20210920.

May 5, 2025 - I found a 0.75" diameter iron rod. The monument is ±4 feet north of the centerline of Keith Siding Road (extended east), and ±17' east of the centerline of County Trunk Highway "W". I also found 1 of Dobbratz's witness monument. I established 3 new reference monuments as shown below.

A-E 7.08(3)(c)(d) Plan view of corner with references to at least 4 witness monuments.

Bearings listed to the nearest second are referenced to the: Wisconsin County Coordinate Reference System, Forest County Zone. All other bearings are magnetic.

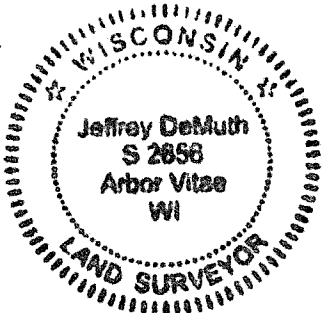


A-E 7.08(3)(e) 1865 Surveyor set a post, 1994 Surveyor set a Forest County aluminum monument, Surveyors from 1996-2000 found the same I found a 0.75" diameter iron rod in 2025.

A-E 7.08(3)(f) I accept this monument in good faith as a FOUND PERPETUATED LOCATION of the corner.

A-E 7.08(3)(g)(h) This corner was not determined through lost-corner-proportionate methods.

A-E 7.08(3)(i) I, Jeffrey L. DeMuth, Professional Land Surveyor No. S-2656, hereby certify that the corner location on this record was determined by me or under my direction and control, and that this U.S. Public Land Survey Monument Record is correct and complete to the best of my knowledge, and belief.



SIGNATURE

Jeffrey L. DeMuth

May 6, 2025

DATE

43513150020

43513150020

N15

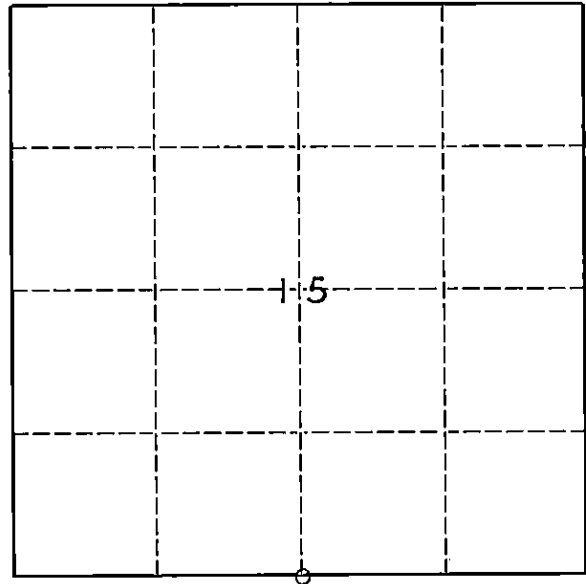
U. S. PUBLIC LAND SURVEY MONUMENT RECORD

INSTRUCTIONS:

This record shall show the location of the corner and shall include all of the following nine elements (a through i).

- (a) Identify the corner by reference to the U.S. public land survey system.
O = Corner monument restored.

SOUTH $\frac{1}{4}$ CORNER OF SECTION 15,
TOWNSHIP 35 NORTH, RANGE 13
EAST.



- (b) Describe any record evidence, monument evidence, occupational evidence, testimonial evidence or any other material evidence you considered, and whether the monument was found or placed.

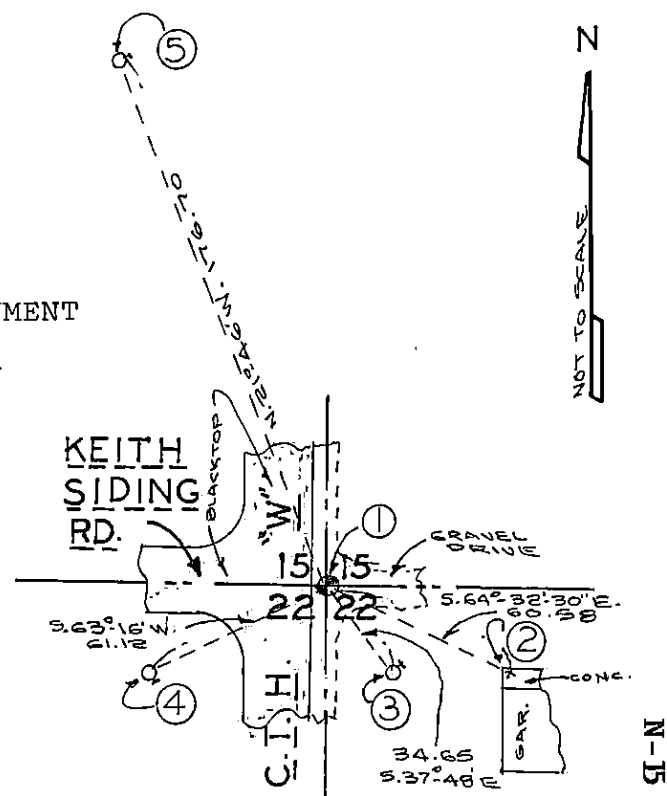
1865 - ORIGINAL SURVEY BY NOWLIN, EAST BETWEEN SEC'S. 15 AND 22
40 CHS. SET $\frac{1}{4}$ POST, B.Ts.- BIRCH 40" N.23°E. 10 LKS., BIRCH
30" S.10°W. 25 LKS.
1988 - ARNOTT R.L.S. NO. S-887 FOUND IRON PIPE AT $\frac{1}{4}$ CORNER, SAID
IRON PIPE USED AS $\frac{1}{4}$ CORNER IN ADJACENT CERTIFIED SURVEY MAPS.
1994 - DOBBRATZ R.L.S NO. S-973 FOUND 3/4" DIA. IRON PIPE AT ARNOTTS
 $\frac{1}{4}$ CORNER SAID CORNER ACCEPTED AS FOUND.

- (c) In the plan view drawing below, provide reference ties to at least 4 witness monuments, or, if the location is within a municipality, to at least 2 witness monuments. (Witness monuments shall be made of concrete, natural stone, iron or other equally durable material.)
Describe witness monuments.

- (d) Show a plan view drawing depicting the relevant monuments and reference ties which is sufficient in detail to enable accurate relocation of the corner monument if the corner monument is disturbed. Indicate north.

SECTION CORNER AND WITNESS MONUMENTS

- ① SET STANDARD FOREST COUNTY ALUMINUM MONUMENT AT $\frac{1}{4}$ SECTION CORNER.
- ② CUT CROSS IN NW CORNER OF CONCRETE APRON
- ③ POWER POLE # 3513-22E4, 40d SPIKE IN N'LY FACE
- ④ POWER POLE # 3513-22W16, 40d SPIKE IN S'LY FACE
- ⑤ POWER POLE # 3513-15L9, 40d SPIKE IN E'LY FACE.



43513150020

150406

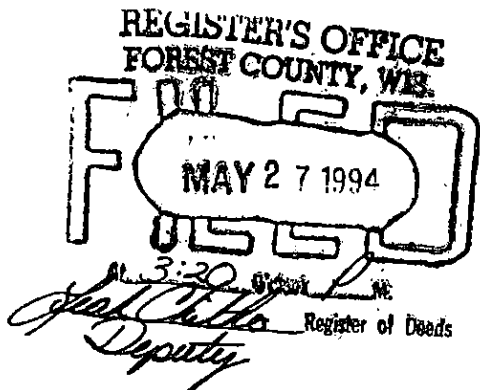
Describe any material discrepancy between the location of the corner as restored or reestablished and the location of that corner as previously restored or reestablished by distance and direction. Show the discrepancy on the plan view drawing under (d), above. Show the distances between the corner as previously restored or reestablished and (1) the corner as restored or reestablished, and (2) to at least 2 of the witness monuments shown on the drawing in (d), above.

NONE

(f) Was the corner restored through acceptance of (1) an obliterated evidence location, or, (2) a found perpetuated location.?

(2)

(g & h) Was the corner reestablished through lost corner proportionate methods? If so, show the method, including the directions and distances to other public land survey corners used as evidence or used for proportioning in determining the corner location.



(i) I, WAYNE G. DOBBRATZ
(type or print name)

certify that the corner location shown on this record was determined by me or under my direction and control and that this U.S. Public Land Survey Monument Record is correct and complete to the best of my knowledge and belief.

Wayne G. Dobbratz 4/9/94
Signature Date

