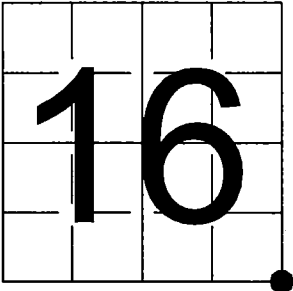


U.S. PUBLIC LAND SURVEY
MONUMENT RECORD

NOTE: This form is intended and designed to fulfill all requirements of Wisconsin Administrative Code, Chapter A-E 7.08 U.S. Public Land Survey Monument Record (3) (a-i)

A-E 7.08(3)(a) Identity of corner:
Southeast Corner Section 16,
Township 35 North, Range 13 East
of the Fourth Principal Meridian,
Town of Lincoln, Forest County, Wisconsin

WISCRS - FOREST COUNTY
N: 548,044.059 USft (XXX,XXX.XXX)
E: 846,424.444 USft (XXX,XXX.XXX)
Datum: NAD83 (2011)
GNSS Method RTK
GNSS Control WISCORS VRS



The coordinate value shown has been verified by the average of two or more GPS observations at a markedly different time. Coordinates shown in parenthesis are previously published values.

A-E 7.08(3)(b)

Original Surveyor: James L. Nowlin - September 11, 1865 to September 21, 1865
Hemlock 8 - S 16° E, 15 Links, Hemlock 30 - N 64° W, 30 Links

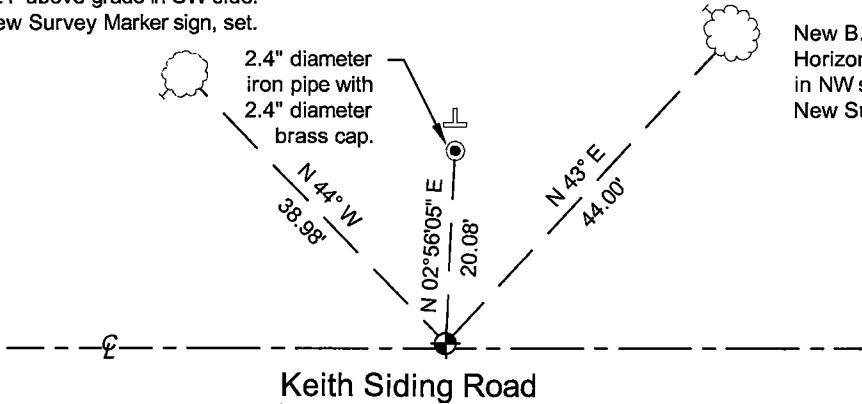
THENCE:

- April 19, 1975 - Surveyor 973 - Wayne G. Dobbratz - indicates this position as "drove 3/4" dia. iron pipe" on county record Map #351322-19750419.
- October 14, 1982 - Surveyor 1394 - Norman A. Harrison - indicates this position as "R.R. spike" on county record Map #351322-19821014.
- June 28, 1996 - Surveyor 887 - Thomas R. Arnott - indicates this position as "RR spike" on county record Map #351322-19960628.
- November 10, 1999 - Surveyor 973 - Wayne G. Dobbratz - indicates this position as "3/4" dia. iron pipe with R.R. spike in top" on county record Map #351315-19991110.
- September 7, 2000 - Surveyor 2148 - Russell F. Brown - indicates this position as "R/R spike" on county record Map #351315-20000907.
- March 4, 2013 - Surveyor 2467 - Zachary J. Stevens - indicates this position as "RR spike" on county record Map #351316-20130304.
- July 19, 2017 - Surveyor 809-8 - Micheal S. Hess - indicates this position as "RR spike" on county record Map #351315-20170719.
- September 20, 2021 - Surveyor 809-8 - Micheal S. Hess - indicates this position as "railroad spike" on county record Map #351315-20210920.

May 5, 2025 - I found a railroad spike. The monument is ±0.5 feet north of the centerline of Keith Siding Road and is ±4" below grade. I also found a witness monument. I set a standard size MAG nail over the railroad spike at the top of asphalt. I established 2 new reference monuments as shown below.

A-E 7.08(3)(c)(d) Plan view of corner with references to at least 4 witness monuments.

New B.T. - 9" Maple
Horizontal nail, set
±4' above grade in SW side.
New Survey Marker sign, set.



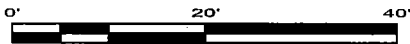
Bearings listed to the nearest second
are referenced to the:
Wisconsin County Coordinate
Reference System,
Forest County Zone.
All other bearings are magnetic.



LEGEND

Monument sizes = outside diameter measurements.

- ⊙ This Corner
- ⊥ Vinyl T-post, set ±1 foot north of witness
- Witness monument, found as noted
- ⊥ Galvanized nail, set or nail found as shown



A-E 7.08(3)(e) 1865 Surveyor set a post, 1975 Surveyor drove a 3/4" iron pipe, subsequent surveyors found a railroad spike. I set a standard MAG nail over the top of the railroad spike in 2025.

A-E 7.08(3)(f) I accept this monument in good faith as a FOUND PERPETUATED LOCATION of the corner.

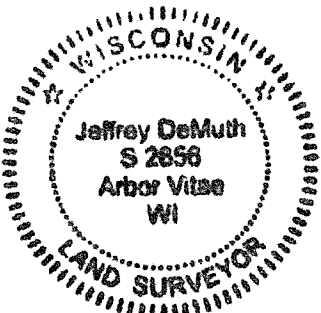
A-E 7.08(3)(g)(h) This corner was not determined through lost-corner-proportionate methods.

A-E 7.08(3)(i) I, Jeffrey L. DeMuth, Professional Land Surveyor No. S-2656, hereby certify that the corner location on this record was determined by me or under my direction and control, and that this U.S. Public Land Survey Monument Record is correct and complete to the best of my knowledge, and belief.

SIGNATURE

May 6, 2025

DATE



43513160000

43513160000

N13

CERTIFIED LAND CORNER RESTORATION

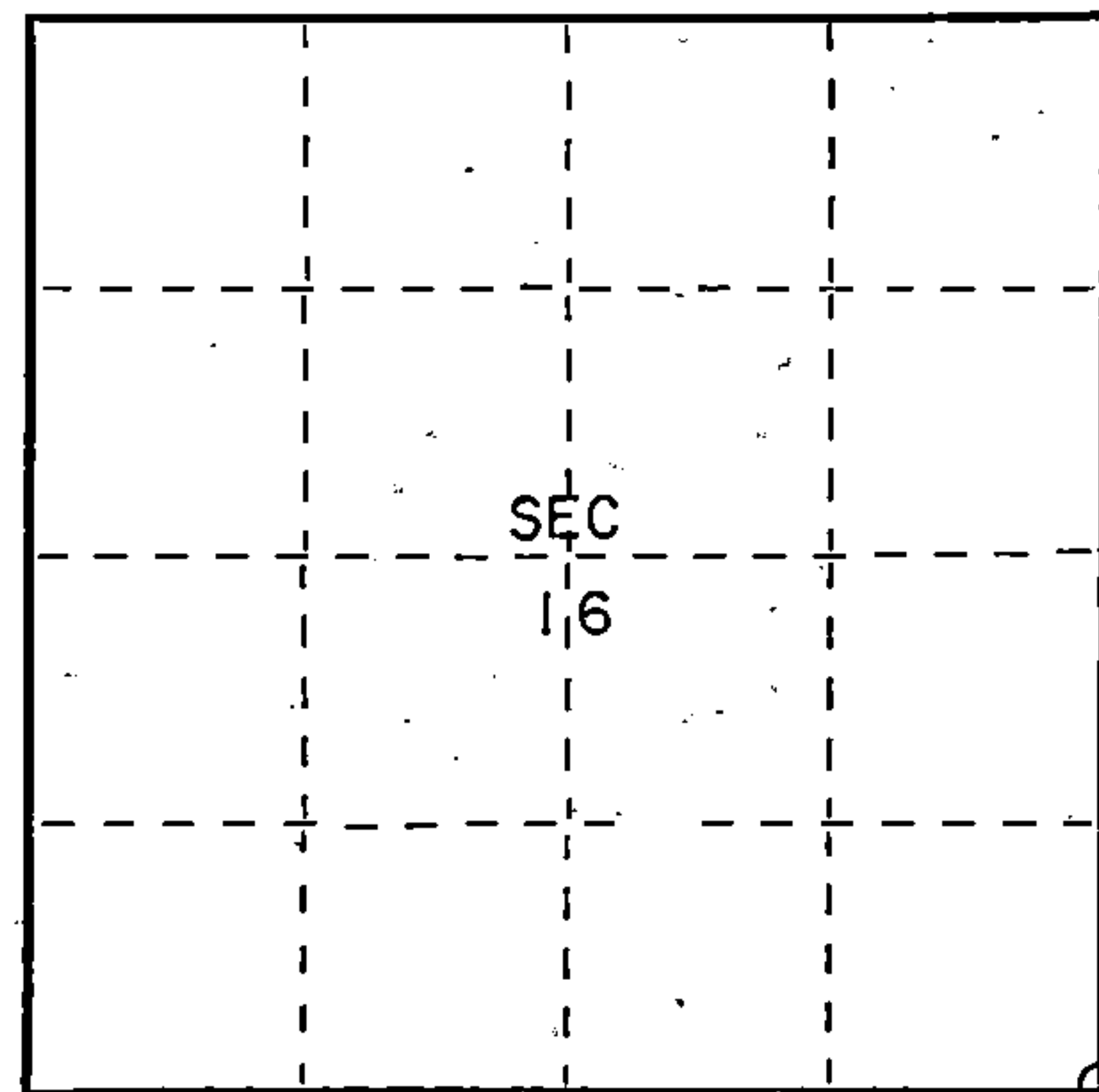
Index No. N13

State of Wisconsin }
County of Forest } ss.

I, Thomas R. Arnott, do hereby certify that on the 16th day of September, 1975, I found evidence of the section corner of sections 15, 16, 21 & 22 Township 35, North, Range 13 E, Fourth Principal Meridian, as described hereon; and that from this evidence I established a new monument and accessories as described hereon to perpetuate the original location of this corner.

Resident witnesses:

Herbert Wagoner



○ = Corner monument restored.

History of original corner establishment:

Original subdivision by James Nowlin Sept 11 - Sept 21, 1865

Hemlock	8	N16E	15 Lks.
Hemlock	30	N64W	30 Lks.

Description of corner evidence found:

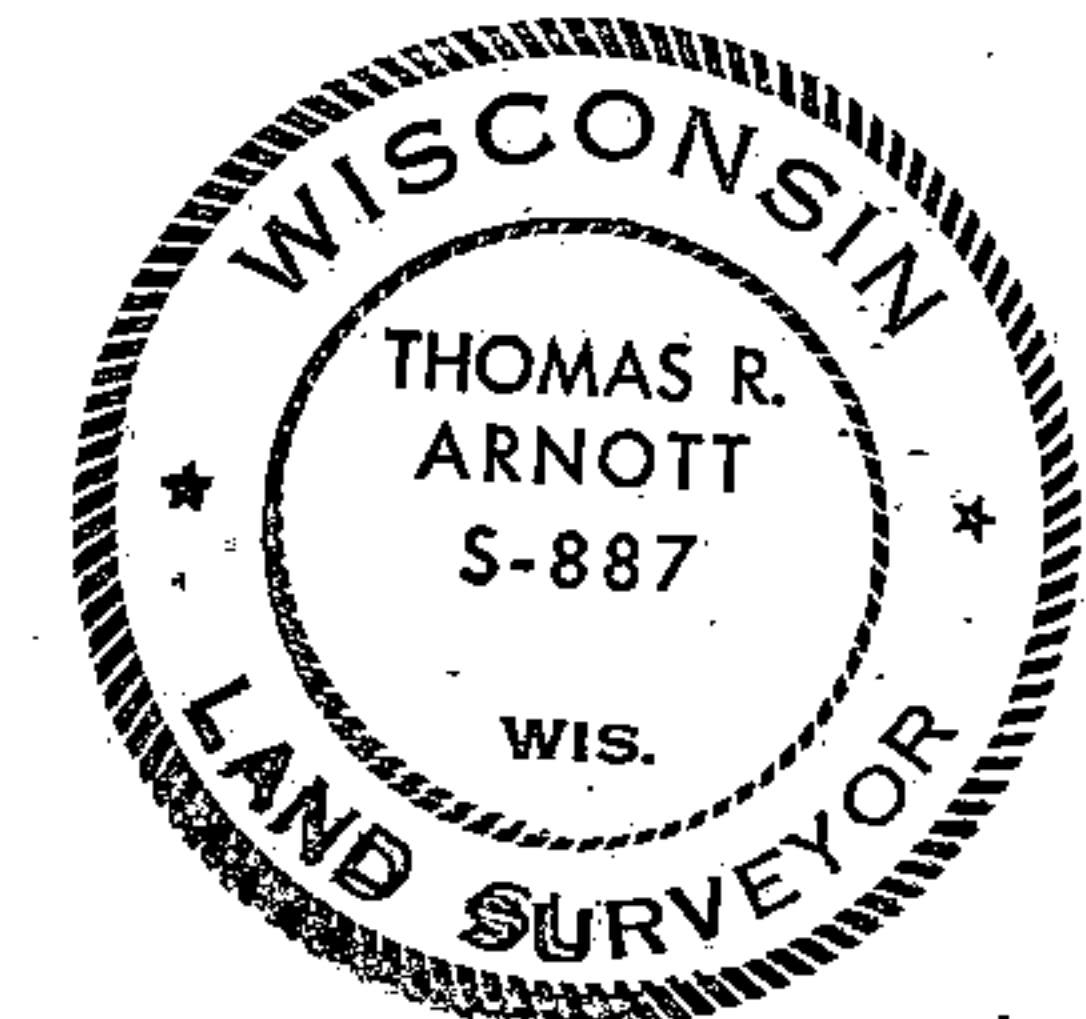
2" iron pipe 5' long with brass cap offset 20 feet north set by C.E. Walker in 1940

Description of monument and accessories I established to perpetuate the original location of this corner.

Reset corner with RR spike
Left monument set by Walker

Ties:

Walker monument	N2W	20.00 feet
Power Pole (3513-22W8)	S40E	31.07 feet



Dated at Crandon, Wis., this 29th day of October, 1975

Signature Thomas R. Arnott Title Land Surveyor Registration No. S-887
(County Surveyor, Registered Land Surveyor, or other duly authorized official)

Office of Register of Deeds, County of Forest, I hereby certify that the within instrument was filed in this office for record on the 29th day of October, 1975 at 1 o'clock P. M.

Eugene Staszny
(Register of Deeds)

Document Number 108093

By _____ Deputy

43513160000