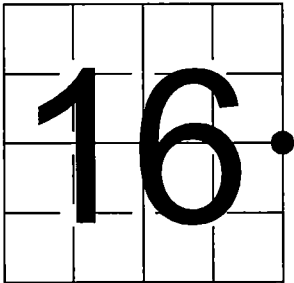


U.S. PUBLIC LAND SURVEY
MONUMENT RECORD - ADDENDUM

NOTE: This form is intended and designed to fulfill all requirements of Wisconsin Administrative Code, Chapter A-E 7.08 U.S. Public Land Survey Monument Record (3) (a-i)

A-E 7.08(3)(a) Identity of corner:
East 1/4 Corner Section 16,
Township 35 North, Range 13 East
of the Fourth Principal Meridian,
Town of Lincoln, Forest County, Wisconsin

WISCRS - FOREST COUNTY
N: 550,654.857 USft (XXX,XXX.XXX)
E: 846,353.301 USft (XXX,XXX.XXX)
Datum: NAD83 (2011)
GNSS Method RTN
GNSS Control WISCRS VRS



The coordinate value shown has been verified by the average of two or more GPS observations at a markedly different time. Coordinates shown in parenthesis are previously published values.

A-E 7.08(3)(b)

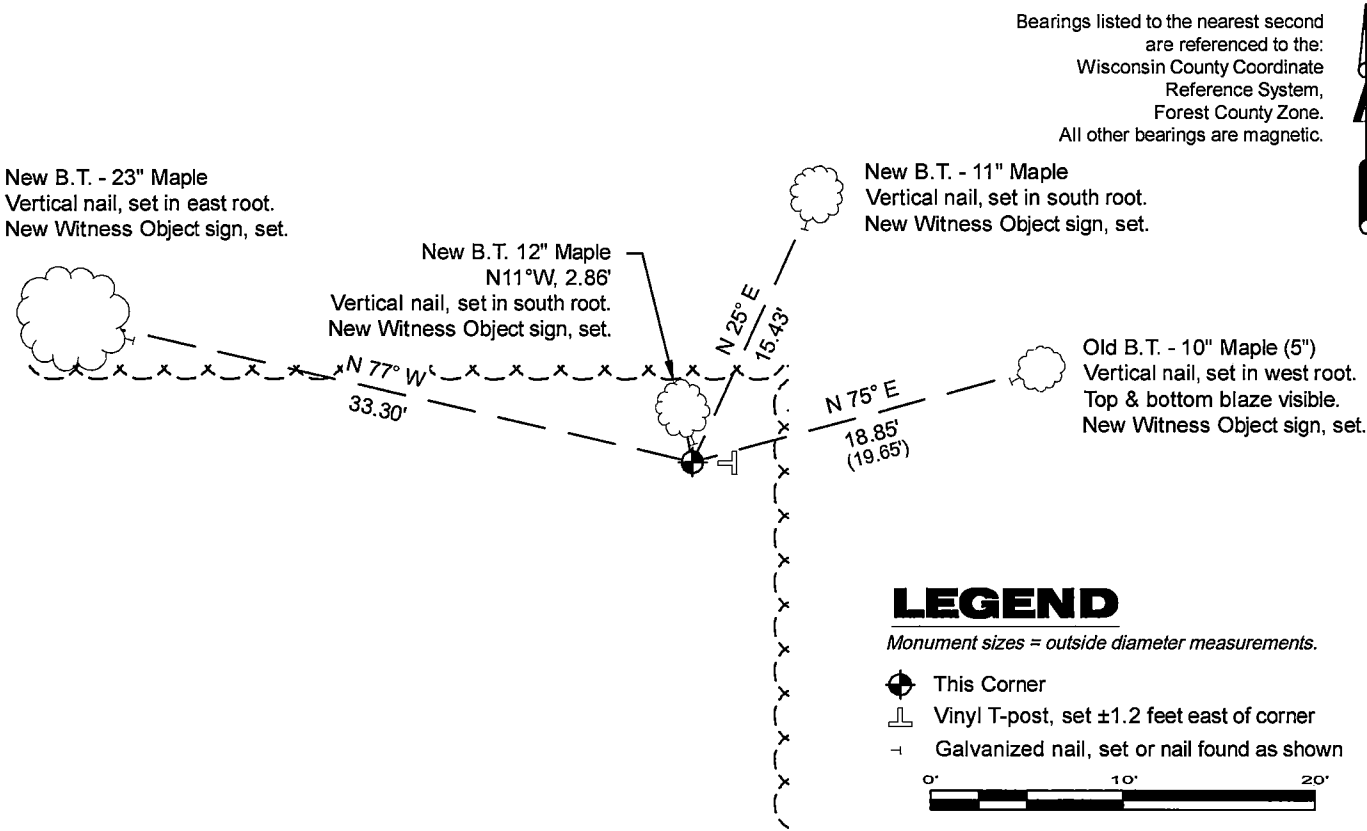
Original Surveyor: James L. Nowlin - September 11, 1865 to September 21, 1865
Birch 20 - S 70° E, 15 Links, Hemlock 10 - N 70° W, 30 Links

See previous Certified Land Corner Restoration - L-13 - October 29, 1975 - Surveyor 887 - Thomas R. Arnott - THENCE:

- October 22, 2001 - Surveyor 2197 - Michael A. Trembl - indicates this position as "2" dia. brass capped iron pipe" on county record Map #351315-20011022.
- June 10, 2004 - Surveyor 2197 - Michael A. Trembl - indicates this position as "2 1/4" dia. brass capped iron pipe" on county record Map #351315-20040610.
- October 22, 2012 - Surveyor 1523 - Todd J. Loftus - indicates this position as "2" brass capped iron pipe" on county record Map #351315-20121022.
- March 4, 2013 - Surveyor 2467 - Zachary J. Stevens - indicates this position as "2" Forest County monument" on county record Map #351316-20130304.

May 7, 2025 - I found a 2.4" diameter iron pipe with a 2.4" diameter brass cap stamped to identify the corner location. The monument is at the intersection of a woods line to the west and a woods line to the south, and extends ±36" above grade. I also found 1 of Arnott's witness monument. I established 3 new reference monuments as shown below.

A-E 7.08(3)(c)(d) Plan view of corner with references to at least 4 witness monuments.



A-E 7.08(3)(e) 1865 Surveyor set a post, 1975 Surveyor found a "2" iron pipe 5' long with a brass cap set by C.E. Walker in 1940", subsequent Surveyors found the same. In 2025, I found a 2.4" diameter iron pipe with a 2.4" diameter brass cap stamped C.E. Walker 1940.

A-E 7.08(3)(f) I accept this monument in good faith as a FOUND PERPETUATED LOCATION of the corner.

A-E 7.08(3)(g)(h) This corner was not determined through lost-corner-proportionate methods.

A-E 7.08(3)(i) I, Jeffrey L. DeMuth, Professional Land Surveyor No. S-2656, hereby certify that the corner location on this record was determined by me or under my direction and control, and that this U.S. Public Land Survey Monument Record is correct and complete to the best of my knowledge, and belief.



SIGNATURE

May 8, 2025

DATE

43513162000

43513162000

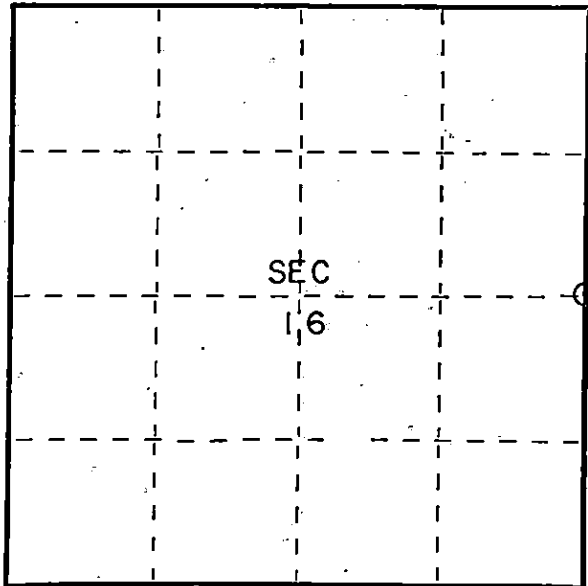
L13

State of Wisconsin }
County of Forest } ss.

I, Thomas R. Arnott, do hereby
certify that on the 15th day
of September, 1975, I found
evidence of the 1/4
corner of sections 15 & 16
Township 35, North, Range
13 E, Fourth Principal Meridian,
as described hereon; and that from this evidence
I established a new monument and accessories
as described hereon to perpetuate the original
location of this corner.

Resident witnesses:

Herbert Wagoner



○ = Corner monument restored.

CERTIFIED LAND CORNER RESTORATION

Index No.

L-13

History of original corner establishment:

Original subdivision by James L. Nowlin Sept. 11 - Sept 21, 1865

Birch	20	S70E	15 Lks.
Hemlock	10	N70W	30 Lks.

Description of corner evidence found:

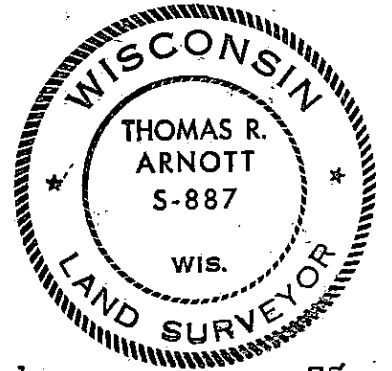
2" iron pipe 5' long with brass cap set by C.E. Walker in 1940

Description of monument and accessories I established to perpetuate the original location of this corner.

Left monument set by Walker

Ties:

Maple	5"	N75E	19.65 feet
Maple	6"	S22W	27.42 feet



Dated at Grandon, Wis., this 29th day of October, 1975

Signature Thomas R. Arnott Title Land Surveyor Registration No. S-887
(County Surveyor, Registered Land Surveyor, or other duly authorized official)

Office of Register of Deeds, County of Forest, I hereby certify that the within
instrument was filed in this office for record on the 29th day of October, 1975
at 1 o'clock P. M.

Eugene Staszynski Document Number 108091
(Register of Deeds)

By _____ Deputy

43513162000