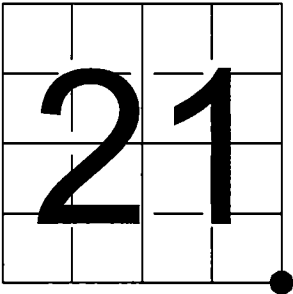


U.S. PUBLIC LAND SURVEY
MONUMENT RECORD

NOTE: This form is intended and designed to fulfill all requirements of Wisconsin Administrative Code, Chapter A-E 7.08 U.S. Public Land Survey Monument Record (3) (a-l)

A-E 7.08(3)(a) Identity of corner:
SE Corner Section 21,
Township 35 North, Range 13 East
of the Fourth Principal Meridian,
Town of Lincoln, Forest County, Wisconsin

WISCRS - FOREST COUNTY
N: 542,825.923 USft (XXX,XXX.XXX)
E: 846,414.044 USft (XXX,XXX.XXX)
Datum: NAD83 (2011)
GNSS Method RTN
GNSS Control WISCORS VRS



The coordinate value shown has been verified by the average of two or more GPS observations at a markedly different time. Coordinates shown in parenthesis are previously published values.

A-E 7.08(3)(b)

Original Surveyor: James L. Nowlin - September 11, 1865 to September 21, 1865
Sugar 7 - N 30° W, 40 Links, Birch 12 - N 41° E, 45 Links, THENCE:

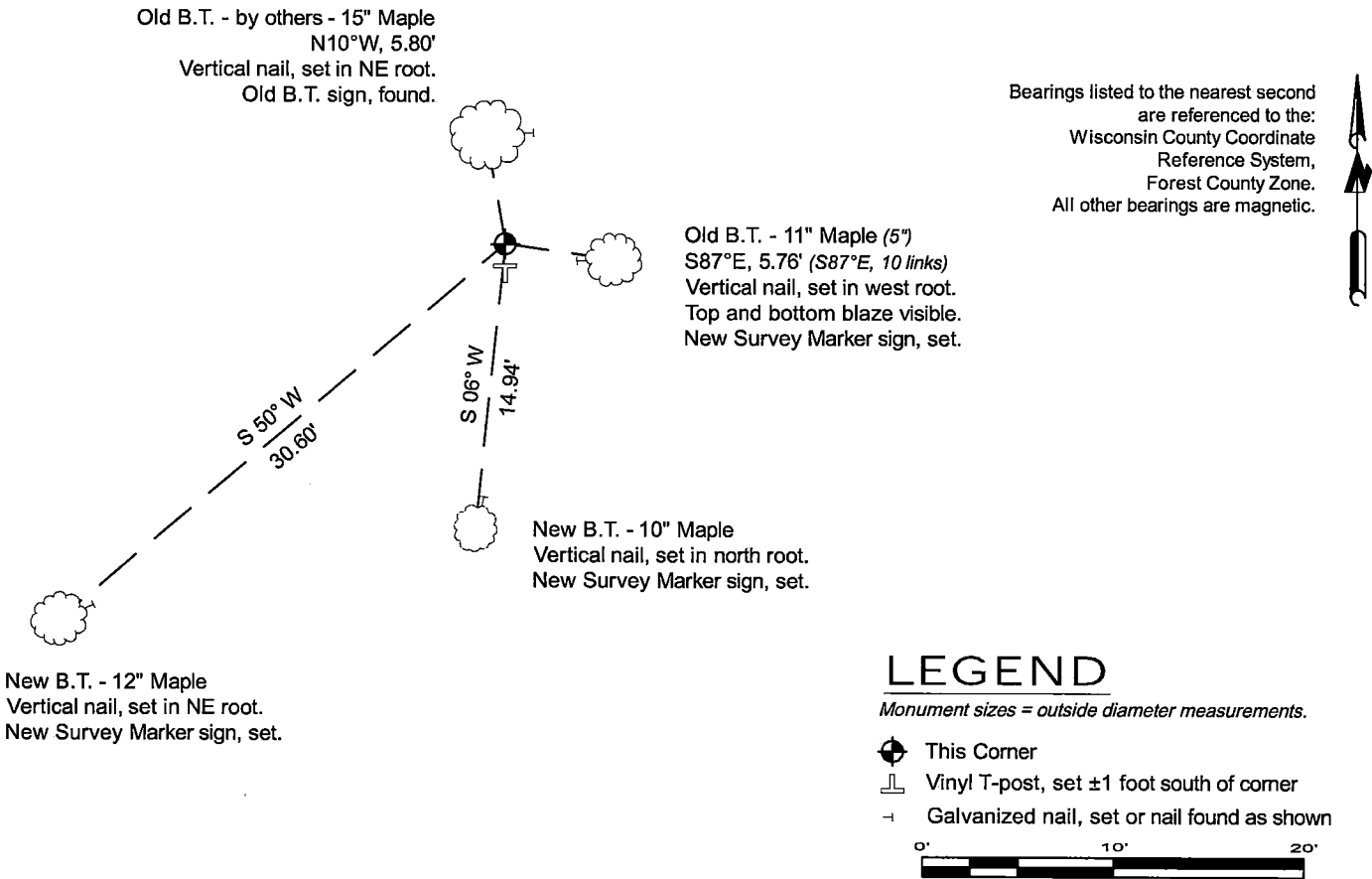
See previous Restoration of Lost Original Government Survey Corner - R13- January 12, 1965 - Surveyor 463 - Neal Sperhake - THENCE:

- April 08, 2013 - Surveyor 2656 - Jeffrey L. DeMuth - indicates this position as "2" iron pipe with 2" brass cap" on county record map #351327-20130408.

June 4, 2025 - I found a 2.4" diameter galvanized iron pipe with a 2.4" diameter brass cap, stamped to identify the corner location. The monument is on highland, ±80 feet south of a woods road centerline, and extends ±36" above grade. I also found 1 of Sperhake's bearing trees and 1 bearing tree by others, both alive and in good condition.

I established 2 new reference monuments as shown below.

A-E 7.08(3)(c)(d) Plan view of corner with references to at least 4 witness monuments.



New B.T. - 12" Maple
Vertical nail, set in NE root.
New Survey Marker sign, set.

Old B.T. - 11" Maple (5")
S87°E, 5.76' (S87°E, 10 links)
Vertical nail, set in west root.
Top and bottom blaze visible.
New Survey Marker sign, set.

New B.T. - 10" Maple
Vertical nail, set in north root.
New Survey Marker sign, set.

Old B.T. - by others - 15" Maple
N10°W, 5.80'
Vertical nail, set in NE root.
Old B.T. sign, found.

LEGEND

Monument sizes = outside diameter measurements.

- ⊕ This Corner
- ⊥ Vinyl T-post, set ±1 foot south of corner
- Galvanized nail, set or nail found as shown

A-E 7.08(3)(e) 1865 Surveyor set a post, 1965 Surveyor found a galvanized iron pipe with a brass cap, subsequent surveyors found the same, as did I in 2025.

A-E 7.08(3)(f) I accept this monument in good faith as a FOUND PERPETUATED LOCATION of the corner.

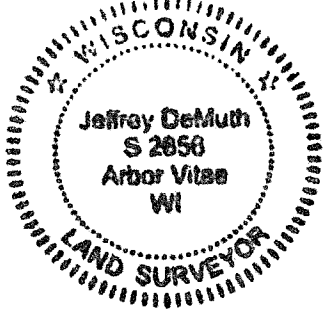
A-E 7.08(3)(g)(h) This corner was not determined through lost-corner-proportionate methods.

A-E 7.08(3)(i) I, Jeffrey L. DeMuth, Professional Land Surveyor No. S-2656, hereby certify that the corner location on this record was determined by me or under my direction and control, and that this U.S. Public Land Survey Monument Record is correct and complete to the best of my knowledge, and belief.

SIGNATURE

June 12, 2025

DATE



43513210000

43513210000

R13

State of Wisconsin

County of FOREST

ss. RESTORATION OF LOST ORIGINAL GOVERNMENT SURVEY CORNER.

I NEAL SPERHAKE, do hereby certify that on the TWENTY-NINTH day of SEPTEMBER 19 64, I ~~established~~ located the NORTHWEST SECTION CORNER OF SECTION 27, TOWNSHIP 35 NORTH, RANGE 13 EAST, Fourth Principal Meridian, as described hereon.

History: This corner was established during the original survey of this township, as noted in the original field notes for the original survey of T35N-R13E, 4th. p.m. and apparently was relocated by C. E. Walker, Forest County Surveyor, in 1940. However, no record of Walker's survey was obtainable.

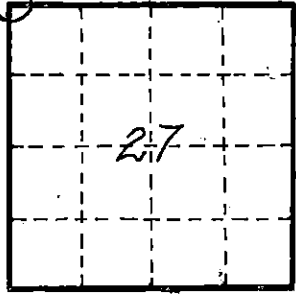
Description of monument and accessories I established to perpetuate the location of this corner:

At the point determined for the location of the corner I emplaced a:
GALVANIZED IRON PIPE, FIVE FEET LONG, TWO INS. IN DIAMETER, WITH BRASS CAP DENOTED AS, "FOREST CO. FOREST CROP SURVEY T35N-R13E 21, 22, 28, 27 C.E. WALKER 7/25/1940."

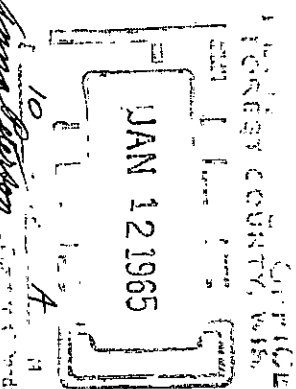
The pipe is witnessed by:

- Maple 6 N 54°W 48 links. (SCRIBED S21 NBT).
- W. Ash 7 N 36°E 11 links. (SCRIBED S22 NBT).
- Maple 5 S 87°E 10 links. (SCRIBED S27 NBT).
- Elm 12 S 47°W 62 links. (SCRIBED S28 NBT).

Description as to how corner was located: The corner has not been questioned by any of the adjoining landowners since it was set 24 years ago, and its position appears to be not in conflict with any of the survey work I have done in the immediate vicinity of this corner. Walker has set the quarter corner between 21 and 28, and the section corner is 39.88 chains east of this quarter corner. The original distance was 39.60 chains, so there isn't too great a conflict here. To the east I have established the corner of 22, 23, 26, 27, and it is 82.36 chains away. The original length of this line was 80.70 chains and this does appear to be a conflict. However, my survey work in this area convinces me that this section line is much longer than what was originally claimed, and the 1.66 chain difference between the original length and the present length is compatible with my observations. Walker has established the corner of 27, 28, 33, 34. North of this at 40.07 chains, he located the original bearing trees for the quarter corner between 27 and 28. Projecting a straight line between his corner of 27, 28, 33, 34 and the quarter corner between 27 and 28, a distance of 80.22 chains, we hit on his corner of 21, 22, 27, 28, and I feel that he probably established this corner by this projection method. Though this doesn't agree with accepted methods of setting section corners by double proportionate measurements, I am willing to accept the fact that this corner has been established at a point probably as close to where the original corner was as any retracement survey can be expected to locate it, and have scribed and noted new bearing trees, and am recording its position with the register of deeds of Forest County.



0 = Corner monument restored



Resident witnesses

Dated at Crandon, Wisconsin, this 12th day of January, 19 65

Signature *Neal Sperhake*

Title Registered Land Surveyor Registration No. 463

~~Forest~~ Forest ~~County~~ County ~~Wisconsin~~ Wisconsin
I hereby certify that the within instrument was ~~filed~~ recorded on the 12th day of January 1965, and was ~~filed~~ signed and ~~page~~ sworn to ~~of County Records~~ before me.

Surveyor's Seal

Signature *Anna Peterson* Title Notary Public

43513210000

Index No. R13