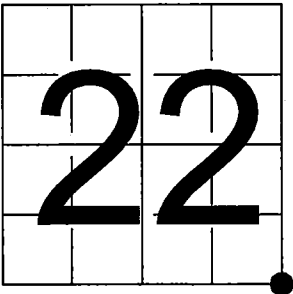


U.S. PUBLIC LAND SURVEY  
MONUMENT RECORD

NOTE: This form is intended and designed to fulfill all requirements of Wisconsin Administrative Code,  
Chapter A-E 7.08 U.S. Public Land Survey Monument Record (3) (a-i)

A-E 7.08(3)(a) Identity of corner:  
SE Corner Section 22,  
Township 35 North, Range 13 East  
of the Fourth Principal Meridian,  
Town of Lincoln, Forest County, Wisconsin

WISCRS - FOREST COUNTY  
N: 542,637.074 USft (XXX,XXX.XXX)  
E: 851,843.333 USft (XXX,XXX.XXX)  
Datum: NAD83 (2011)  
GNSS Method RTN  
GNSS Control WISCORS VRS



The coordinate value shown has been verified by the average of two or more GPS observations  
at a markedly different time. Coordinates shown in parenthesis are previously published values.

A-E 7.08(3)(b)

Original Surveyor: James L. Nowlin - September 11, 1865 to September 21, 1865  
Sugar 12 - N 39° W, 200 Links, Spruce 12 - N 11° E, 230 Links

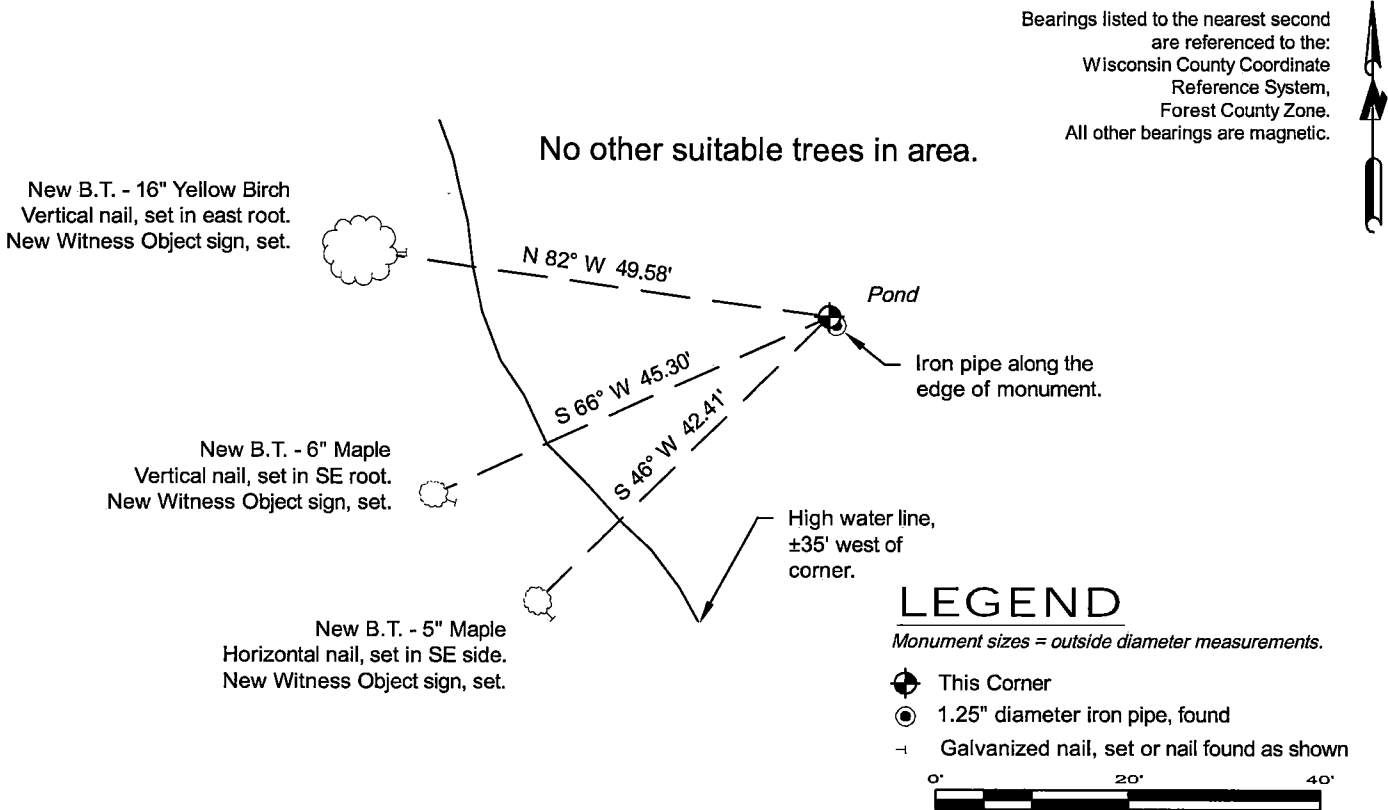
See previous Restoration of Lost Original Government Survey Corner - R17- January 12, 1965 - Surveyor 463 - Neal Sperhake - THENCE:

- June 01, 1987 - Surveyor 887 - Thomas R. Arnott - indicates this position as "iron pipe mon. found" on county record Map #351222-19870601.
- April 08, 2013 - Surveyor 2656 - Jeffrey L. DeMuth - indicates this position as "1" iron pipe with 2" aluminum cap ("cap missin'g")" on county record map #351327-20130408. NOTE: iron pipe is along the SE edge of Sperhake corner.
- September 26, 2019 - Surveyor 2617 - Jeffrey M. Lieuwen - indicates this position as "found 1" pipe w/2"pipe" on county record map #351322-20190926.
- January 15, 2024 - Surveyor 1783 - Thomas J. McGuire - indicates this position as "iron pipe with cap" on Certified Survey Map 242309 & Certified Survey Map 242336.

June 2, 2025 - I found a 1.25" diameter galvanized iron pipe with a 4" diameter aluminum Kimberly Clark cap, stamped to identify the corner location. The monument is ±35 feet east from the edge of a pond, and is ±4" below the surface of the pond. I did not find either of Sperhake's bearing trees.

I established 3 new reference monuments as shown below.

A-E 7.08(3)(c)(d) Plan view of corner with references to at least 4 witness monuments.



A-E 7.08(3)(e) 1865 Surveyor set a post, 1965 Surveyor set a galvanized iron pipe with an aluminum cap, subsequent surveyors found similar. I found a 1.25" diameter galvanized iron pipe with a 4" diameter aluminum Kiberly Clark cap in 2025.

A-E 7.08(3)(f) I accept this monument in good faith as a FOUND PERPETUATED LOCATION of the corner.

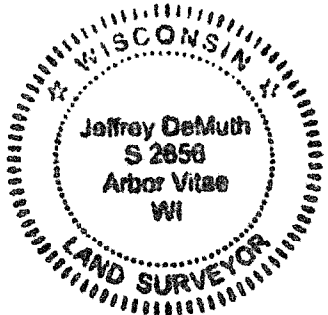
A-E 7.08(3)(g)(h) This corner was previously determined through lost-corner-proportionate methods.

A-E 7.08(3)(i) I, Jeffrey L. DeMuth, Professional Land Surveyor No. S-2656, hereby certify that the corner location on this record was determined by me or under my direction and control, and that this U.S. Public Land Survey Monument Record is correct and complete to the best of my knowledge, and belief.

SIGNATURE

June 12, 2025

DATE



43513220000

43513220000

R17

State of Wisconsin

County of FOREST

ss. RESTORATION OF LOST ORIGINAL GOVERNMENT SURVEY CORNER.

I NEAL SPERHAKE, do hereby certify that on the FIFTEENTH day of SEPTEMBER, 19 64, I established the NORTHWEST SECTION CORNER OF SECTION 26, TOWNSHIP 35 NORTH, RANGE 13 EAST, Fourth Principal Meridian, as described hereon.

**History:** This corner was established during the original survey of this township, as noted in the original field notes for the original survey of T35N-R13E, 4th. p.m.

**Description of monument and accessories I established to perpetuate the location of this corner:**

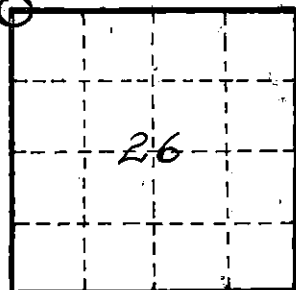
At the point determined for the location of the corner I emplaced a:

GALVANIZED IRON PIPE, THREE FEET LONG, ONE INCH IN DIAMETER, WITH ALUMINUM CAP DENOTED AS, "KIMBERLY CLARK CORP. T35N 22, 23, 27, 26 R13E SPERHAKE RLS 463 9/15/64."

The pipe is witnessed by:

Maple 18 N 34°W 196 links. (SCRIBED S22 NBT).  
Maple 22 S 74°W 108 links. (SCRIBED S27 NBT).

**Description as to how corner was located:** No evidence of the original corner is present. Thus,



I at first attempted to determine the position of the corner by double proportionate measurement. To the north the quarter section corner between sections 22 and 23, and to the south the town line corner of 34 and 35 had been previously established. The distance between them is 201.16 chains. The proportioned north-south position of 22, 23, 26, 27, would be 40.23 chains south of the quarter between 22 and 23, and 160.93 chains north of the town line corner of 34 and 35. To the east, the range line corner of 24 and 25 and to the west the section corner common to 21, 22, 27, 28, had been previously established, with a distance between them of 242.78 chains. The record distance was 241.70 chains. Since the record distance of the line between 22, 23, 26, 27 and the range line corner of 24 and 25 was 161.00 chains, the east-west proportioned distance of 22, 23, 26, 27 west of the range line corner of 24 and 25 would be 161.76 chains. This position in my opinion would not conform with a proper interpretation of the original field notes. In them, it is noted that the two original bearing trees were "Sugar 12, N39°W 200 links, and Spruce 12, N11°E 230 links". To the east of the proportioned east-west position of the corner is an open bog. It is my opinion that the corner originally was in this bog, which necessitated using bearing trees 200 and 230 links from the corner. If the corner had been placed where proportioned measurements would place it, I'm certain the timber present would have been sufficient to allow for bearing trees much closer to the original post than were picked. For the north-south position of the corner I am satisfied that the north-south proportioned distance is as noted above. For east-west, I

(Continued on Back)

Resident witnesses

Dated at Crandon, Wisconsin, this 12th day of January, 19 65.

Signature

Title Registered Land Surveyor Registration No. 463

~~of~~ Forest County ~~of~~ Wisconsin,  
I hereby certify that the within instrument was ~~filed in this~~  
~~of~~ Forest County ~~of~~ Wisconsin on the 12th day of January  
19 65, and was ~~filed in Book No.~~ signed and ~~Page No.~~ sworn to  
~~of~~ County Records before me.

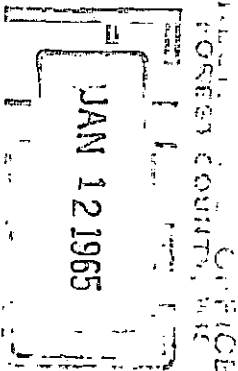
Signature Anna Peterson Title Notary Public

43513 220000

Index No. R17

Surveyor's Seal

89602



attempted to position the corner at such a point that a north 11 east bearing with a distance of 230 links would tie in with a north 39 west bearing of 200 links to two points where original bearing trees could have conceivably been. I presumed that the trees would have been close to the edge of the bog. The east-west position of the spruce is difficult to even roughly estimate, for the north edge of the bog runs in an east-west direction. The first determination was to measure south 11 degrees west of the north edge of the bog approximately 230 links. This narrowed down the position at the north-south proportioned position of the corner to an east-west linear position that can only vary about half a chain. In the northwest corner of the bog is a point that extends southeasterly into the bog a short distance, and on which even today several large maples are growing, though none of them old enough to be the original bearing trees. However, it is my opinion that the original bearing maple could only have grown on this point, as no other position would provide a north-south position of the corner that would allow a north-east distance of 230 links for the spruce bearing tree. I have estimated that the maple bearing tree probably grew on the southeast tip of the point, and from here I measured south 39° east 200 links to a point that hits on the east-west linear position of the corner as previously determined from north-south proportioned distance.

In summary, the north-south position of the corner was determined by proportionate measurement. The east-west position was determined by assuming the corner was originally in the bog, and picking a point in the northwest corner which seems to be the only conceivable place a maple could have grown at the time of the original survey, swinging an arc with a radius of 200 links until it coincided with the previously established north-south position of the corner as further checked by this spot being the only place in the bog where a 230 link call would intercept the north edge of the bog at approximately a bearing of north 11 degrees east. The corner of 22, 23, 26, 27; is, therefore, 40.23 chains south of the quarter between 22 and 23; 160.93 chains north of the town line corner of 34 and 35; 160.42 chains west of the range line corner of 24 and 25, and 82.36 chains east of the corner of 21, 22, 27, 28.