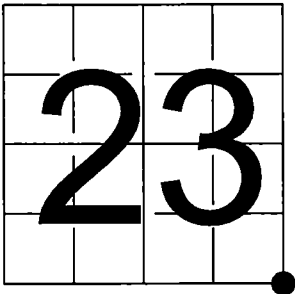


U. S. PUBLIC LAND SURVEY MONUMENT RECORD

NOTE: This form is intended and designed to fulfill all requirements of Wisconsin Administrative Code, Chapter A-E 7.08 U.S. Public Land Survey Monument Record (3) (a-i)

A-E 7.08(3)(a) Identity of corner:
Southeast Corner Section 23,
Township 35 North, Range 13 East
of the Fourth Principal Meridian,
Town of Lincoln, Forest County,
Wisconsin

WISCRS - FOREST COUNTY
N: 542,536.502 USft (XXX,XXX.XXX)
E: 857,097.331 USft (XXX,XXX.XXX)
Datum: NAD83 (2011)
GNSS Method RTK
GNSS Control WISCORS VRS



The coordinate value shown has been verified by the average of two or more GPS observations at a markedly different time. Coordinates shown in parenthesis are previously published values.

A-E 7.08(3)(b)

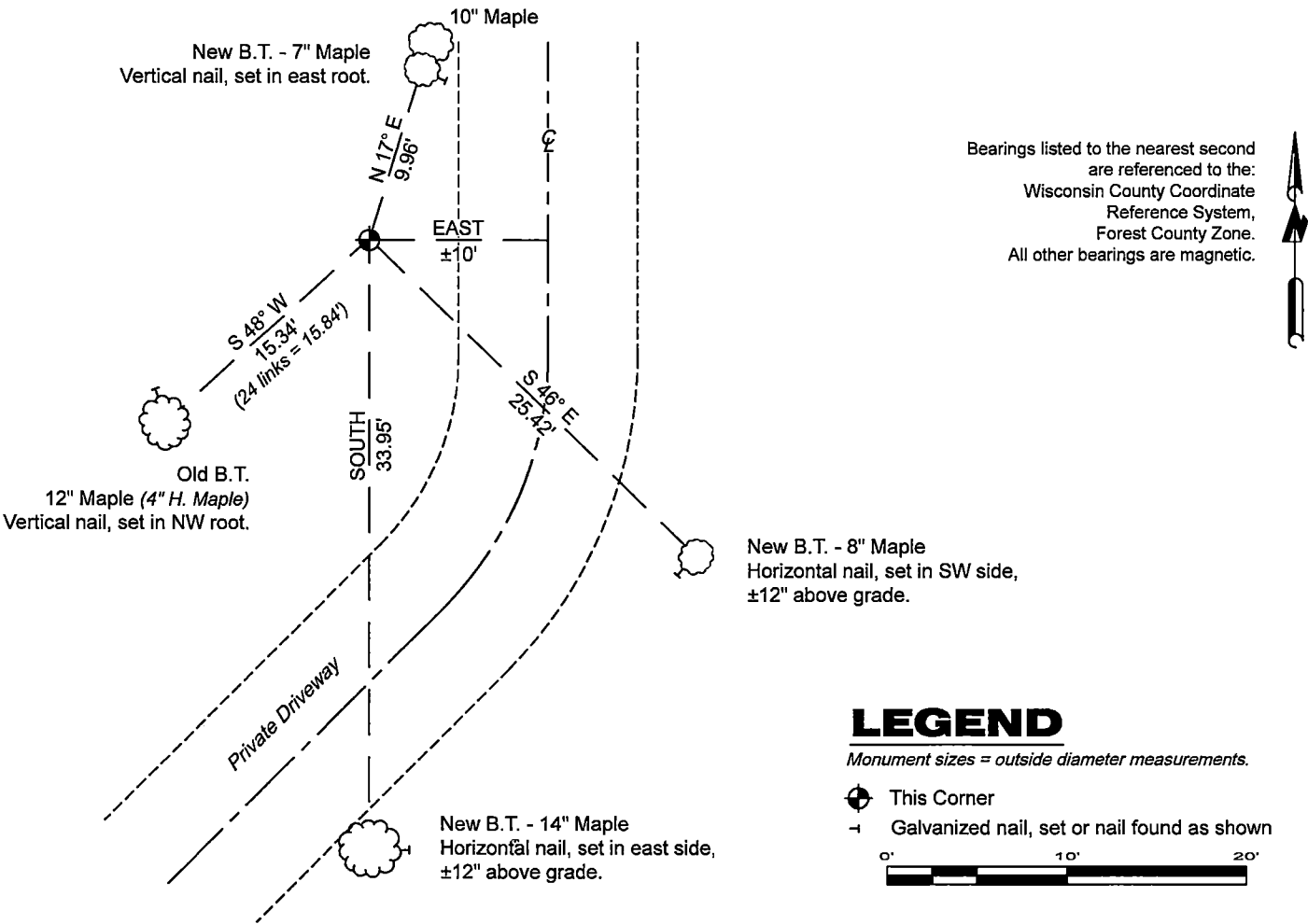
Original Surveyor: James L. Nowlin - September 11, 1865 to September 21, 1865
Sugar 20 - N 52° W, 12 Links, Birch 8 - N 44° E, 52 Links

See previous Restoration of Lost Original Government Survey Corner - R21 - January 12, 1965 - Surveyor 463 - Neal Sperhake - THENCE:

- Unknown Date - Surveyor 2671 - Timothy J. Rusch - Indicates this position as "aluminum capped monument " on county record map #351325-00000000

August 20, 2024 - I found a 1.3" diameter iron pipe, with a 4" diameter Kimberly Clark aluminum cap stamped to identify the corner location. The monument is on the west side of a private driveway and extends ±14" above grade. I also found 1 of Sperhake's bearing trees, alive, standing and blaze's visible. I established 3 new reference monuments as shown below.

A-E 7.08(3)(c)(d) Plan view of corner with references to at least 4 witness monuments.



A-E 7.08(3)(e) 1865 Surveyor set a post, 1965 Surveyor set a galvanized iron pipe with an aluminum cap, I found a 1.3" diameter iron pipe with a 4" diameter aluminum cap in 2024.

A-E 7.08(3)(f) I accept this monument in good faith as a FOUND PERPETUATED LOCATION of the corner.

A-E 7.08(3)(g)(h) This corner was previously determined through lost-corner-proportionate methods.

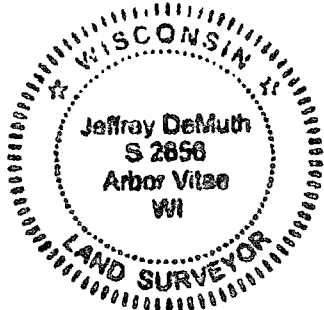
A-E 7.08(3)(i) I, Jeffrey L. DeMuth, Professional Land Surveyor No. S-2656, hereby certify that the corner location on this record was determined by me or under my direction and control, and that this U.S. Public Land Survey Monument Record is correct and complete to the best of my knowledge, and belief.

SIGNATURE

Jeffrey L. DeMuth

August 27, 2024

DATE



43513230000

R21

State of Wisconsin

County of FOREST

ss. RESTORATION OF LOST ORIGINAL GOVERNMENT SURVEY CORNER.

I NEAL SPERHAKE, do hereby certify that on the FIFTEENTH day of SEPTEMBER 1964, I established the NORTHWEST SECTION CORNER OF SECTION 25, TOWNSHIP 35 NORTH, RANGE 13 EAST, Fourth Principal Meridian, as described hereon.

History: This corner was established during the original survey of this township, as noted in the original field notes for the original survey of T35N-R13E, 4th. p.m.

Description of monument and accessories I established to perpetuate the location of this corner:

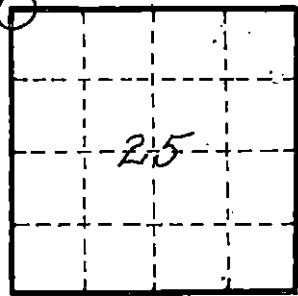
At the point determined for the location of the corner I emplaced a:

GALVANIZED IRON PIPE, THREE FEET LONG, ONE INCH IN DIAMETER, WITH ALUMINUM CAP DENOTED AS, "KIMBERLY CLARK CORP. T35N 23, 24, 25, 26 R13E SPERHAKE RLS 463 9/15/64."

The pipe is witnessed by:

- W. Birch 7 N 65°W 31 links. (SCRIBED S23 NBT).
- W. Birch 9 N 68°E 48 links. (SCRIBED S24 NBT).
- W. Birch 9 S 74°E 45 links. (SCRIBED S25 NBT).
- H. Maple 4 S 48°W 24 links. (SCRIBED S26 NBT).

Description as to how corner was located: No evidence of original corner present. Thus, set by double proportionate measurement. To the north, the witness corner to the section corner common to sections 13, 14, 23, 24, and to the south the section corner common to sections 25, 26, 35, 36, have been previously established. The distance between them is 154.76 chains. The record distance was 155.50 chains. Thus, the north-south position of 23, 24, 25, 26, is 79.62 chains north of 25, 26, 35, 36, and 75.14 chains south of the witness corner to the section corner common to 13, 14, 23, 24. To the east, the range line corner of 24, 25, and to the west the section corner common to sections 22, 23, 26, 27, have been previously established with a distance between them of 160.42 chains. The record distance was 161.00 chains. The record distance of the line between sections 24 and 25 was 81.00 chains. Thus, the east-west position of 23, 24, 25, 26, is 80.71 chains east of the range line corner of 24, 25, and 79.71 chains east of the corner common to sections 22, 23, 26, 27.



0 = Corner monument restored

89598
RECORDING OFFICE
FOREST COUNTY, WIS.
JAN 12 1965
Anna Peterson

Resident witnesses

Dated at Crandon, Wisconsin, this 12th day of January, 1965.

Signature Neal Sperhake

Title Registered Land Surveyor Registration No. 463

Notary of Forest County of Wisconsin, I hereby certify that the within instrument was filed in this office for record on the 12th day of January 1965, and was filed in Book No. signed and Page No. sworn to of County Records before me.

Surveyor's Seal

Signature Anna Peterson Title Notary Public

43513230000

Index No. R21



T 35 R

N

23

24

26

25

S

R 1 E

RLS 463

9-15-64







