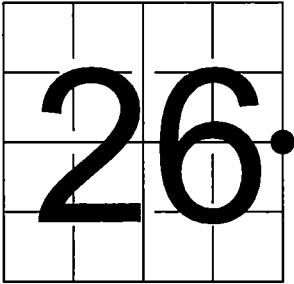


U. S. PUBLIC LAND SURVEY MONUMENT RECORD

NOTE: This form is intended and designed to fulfill all requirements of Wisconsin Administrative Code, Chapter A-E 7.08 U.S. Public Land Survey Monument Record (3) (a-i)

A-E 7.08(3)(a) Identity of corner:
East 1/4 Corner Section 26,
Township 35 North, Range 13 East
of the Fourth Principal Meridian,
Town of Lincoln, Forest County,
Wisconsin

WISCORS - FOREST COUNTY
N: 539,913.395 USft (XXX,XXX.XXX)
E: 857,114.743 USft (XXX,XXX.XXX)
Datum: NAD83 (2011)
GNSS Method RTK
GNSS Control WISCORS VRS



The coordinate value shown has been verified by the average of two or more GPS observations at a markedly different time. Coordinates shown in parenthesis are previously published values.

A-E 7.08(3)(b)

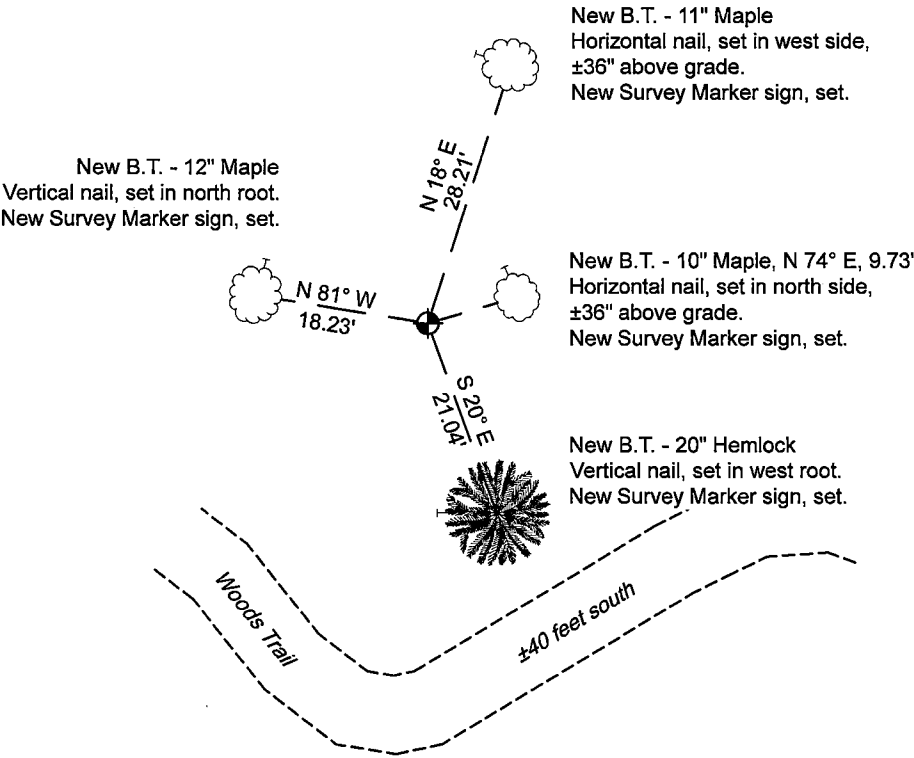
Original Surveyor: James L. Nowlin - September 11, 1865 to September 21, 1865
Sugar 12 - N 35° E, 12 Links, Hemlock 18 - S 49° W, 30 Links

See previous Restoration of Lost Original Government Survey Corner - T21 - January 12, 1965 - Surveyor 463 - Neal Sperhake - THENCE:

- Unknown Date - Surveyor 2671 - Timothy J. Rusch - Indicates this position as "aluminum capped monument " on county record map #351325-00000000

August 20, 2024 - I found a 1.3" diameter iron pipe, with a 4" diameter Kimberly Clark aluminum cap stamped to identify the corner location. The monument is ±40 feet north of a woods trail and extends ±14" above grade. I also found 1 bearing tree (no record), being a 12" maple, dead, standing, scribed and painted. I established 4 new reference monuments as shown below.

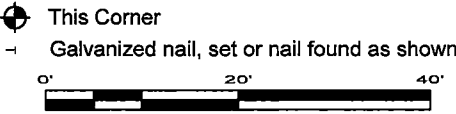
A-E 7.08(3)(c)(d) Plan view of corner with references to at least 4 witness monuments.



Bearings listed to the nearest second are referenced to the: Wisconsin County Coordinate Reference System, Forest County Zone. All other bearings are magnetic.

LEGEND

Monument sizes = outside diameter measurements.



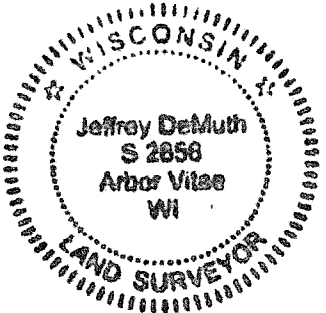
A-E 7.08(3)(e) 1865 Surveyor set a post, 1965 Surveyor set a galvanized iron pipe with an aluminum cap, I found a 1.3" diameter iron pipe with a 4" diameter aluminum cap in 2024.

A-E 7.08(3)(f) I accept this monument in good faith as a FOUND PERPETUATED LOCATION of the corner.
A-E 7.08(3)(g)(h) This corner was previously determined through lost-corner-proportionate methods.

A-E 7.08(3)(i) I, Jeffrey L. DeMuth, Professional Land Surveyor No. S-2656, hereby certify that the corner location on this record was determined by me or under my direction and control, and that this U.S. Public Land Survey Monument Record is correct and complete to the best of my knowledge, and belief.

SIGNATURE

August 27, 2024
DATE



43513262000

T21

State of Wisconsin
County of FOREST

ss. RESTORATION OF LOST ORIGINAL GOVERNMENT SURVEY CORNER.

I NEAL SPERHAKE, do hereby certify that on the EIGHTEENTH day of SEPTEMBER, 19 64, I established the WEST QUARTER SECTION CORNER OF SECTION 25, TOWNSHIP 35 NORTH, RANGE 13 EAST, Fourth Principal Meridian, as described hereon.

History: This corner was established during the original survey of this township, as noted in the original field notes for the original survey of T35N-R13E, 4th. p.m.

Description of monument and accessories I established to perpetuate the location of this corner:

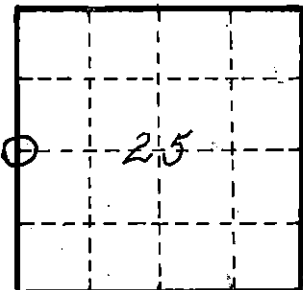
At the point determined for the location of the corner I emplaced a:

GALVANIZED IRON PIPE, THREE FEET LONG, ONE INCH IN DIAMETER, WITH ALUMINUM CAP DENOTED AS, "KIMBERLY CLARK CORP. T35N 1/4 BTWN. 26 & 25 R13E SPERHAKE RLS 463 9/18/64."

The pipe is witnessed by:

Maple 15 S 83°E 19 links. (SCRIBED 1/4S 25 NBT).
Hemlock 10 N 83°W 4 links. (SCRIBED 1/4S 26 NBT).

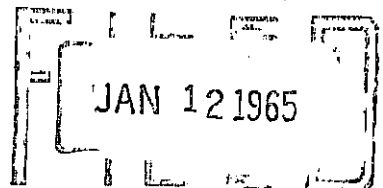
Description as to how corner was located: No evidence of the original corner present. Thus, set by proportionate measurement. Since both the sections corners 1/2 mile north and south have been previously established with a distance between them of 79.62 chains, the quarter corner was set 39.81 chains from either corner and on a straight line between them.



0 = Corner monument restored

89600

REGISTERED OFFICE
FOREST COUNTY, WIS.



At 10 o'clock A.M. in the presence of
Anna Peterson Register of Deeds

Resident witnesses

Dated at Crandon, Wisconsin, this 12th day of January, 19 65.

Signature Neal Sperhake

Title Registered Land Surveyor Registration No. 463

~~Office of~~ Forest County ~~of~~ Wisconsin,

I hereby certify that the within instrument was ~~filed in the~~ filed in the office of ~~the~~ the 12th day of January 19 65, and was ~~filed in the~~ filed in the Book No. signed and page No. sworn to ~~of County Records~~ before me.

Surveyor's Seal

Signature Anna Peterson Title Notary Public

43513 26 2000

Index No. 121









