

U.S. PUBLIC LAND SURVEY
MONUMENT RECORD - ADDENDUM

NOTE: This form is intended and designed to fulfill all requirements of Wisconsin Administrative Code, Chapter A-E 7.08 U.S. Public Land Survey Monument Record (3) (a-l)

A-E 7.08(3)(a) Identity of corner:
South 1/4 Corner Section 27,
Township 35 North, Range 13 East
of the Fourth Principal Meridian,
Town of Lincoln, Forest County, Wisconsin

WISCRS - FOREST COUNTY
N: 537,511.958 USft (XXX,XXX.XXX)
E: 849,077.754 USft (XXX,XXX.XXX)
Datum: NAD83 (2011)
GNSS Method RTN
GNSS Control WISCORS VRS



The coordinate value shown has been verified by the average of two or more GPS observations at a markedly different time. Coordinates shown in parenthesis are previously published values.

A-E 7.08(3)(b)

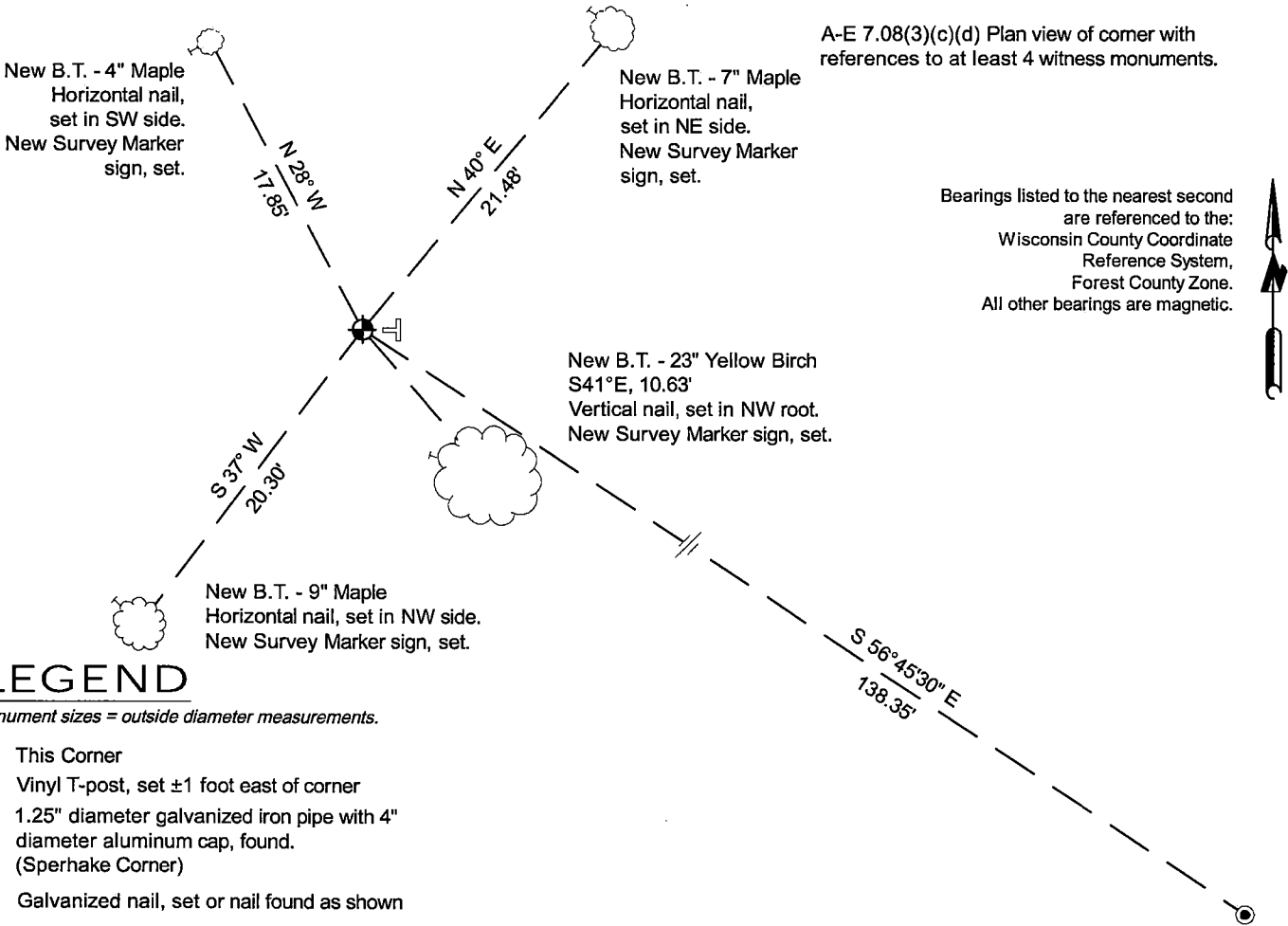
Original Surveyor: James L. Nowlin - September 11, 1865 to September 21, 1865
Hemlock 12 - S 40° W, 15 Links, Hemlock 18 - N 71° E, 45 Links THENCE:

- October 23, 1940 - Surveyor C.E. Walker set a 2" diameter iron pipe monument with a 2" diameter brass cap stamped to identify the corner location.
- October 20, 1964 - Surveyor 463 - Neal Sperhake - indicates this position as "galvanized iron pipe, three feet long, one inch in diameter with aluminum cap denoted as, "Kimberly Clark Corp.", and stamped to identify the corner location on previous Restoration of Lost Original Government Survey Corner - V15- January 12, 1965. NOTE: Sperhake's monument and restoration form are erroneous.
- April 08, 2013 - Surveyor 2656 - Jeffrey L. DeMuth - indicates this position as "2" iron pipe with 2" brass cap" on county record map #351327-20130408.

June 11, 2025 - I found a 2.4" diameter galvanized iron pipe with a 2.4" diameter brass cap, stamped to identify the corner location. The monument is on highland, extends ±30" above grade, and is leaning SE (±4" out of plumb), I measured the top of the monument.

I established 4 new reference monuments as shown below.

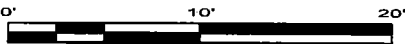
A-E 7.08(3)(c)(d) Plan view of corner with references to at least 4 witness monuments.



LEGEND

Monument sizes = outside diameter measurements.

- This Corner
- ⊥ Vinyl T-post, set ±1 foot east of corner
- 1.25" diameter galvanized iron pipe with 4" diameter aluminum cap, found. (Sperhake Corner)
- Galvanized nail, set or nail found as shown

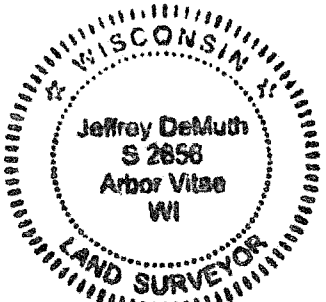


A-E 7.08(3)(e) 1865 Surveyor set a post, 1940 Surveyor set a galvanized iron pipe with an brass cap, 1965 Surveyor set a galvanized iron pipe with an aluminum cap, subsequent surveyors found 1940 monument. I found both monuments in 2025, and accepted the 1940 monument.

A-E 7.08(3)(f) I accept this monument in good faith as a FOUND PERPETUATED LOCATION of the corner.

A-E 7.08(3)(g)(h) This corner was not determined through lost-corner-proportionate methods.

A-E 7.08(3)(i) I, Jeffrey L. DeMuth, Professional Land Surveyor No. S-2656, hereby certify that the corner location on this record was determined by me or under my direction and control, and that this U.S. Public Land Survey Monument Record is correct and complete to the best of my knowledge, and belief.



SIGNATURE

June 12, 2025

DATE

43513270020

43513270020

V15

State of Wisconsin

County of FOREST

ss. RESTORATION OF LOST ORIGINAL GOVERNMENT SURVEY CORNER.

I NEAL SPERHAKE, do hereby certify that on the TWENTIETH day of OCTOBER, 19 64, I established the NORTH QUARTER SECTION CORNER OF SECTION 34, TOWNSHIP 35 NORTH, RANGE 13 EAST, Fourth Principal Meridian, as described hereon.

History: This corner was established during the original survey of this township, as noted in the original field notes for the original survey of T35N-R13E, 4th. p.m.

Description of monument and accessories I established to perpetuate the location of this corner:

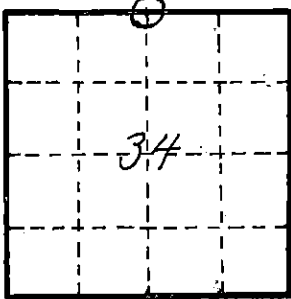
At the point determined for the location of the corner I emplaced a:

GALVANIZED IRON PIPE, THREE FEET LONG, ONE INCH IN DIAMETER, WITH ALUMINUM CAP DENOTED AS, "KIMBERLY CLARK CORP. T35N $\frac{1}{4}$ BTWN. 27 & 34 R13E SPERHAKE RLS 463 10/20/64."

The pipe is witnessed by:

Maple 10 N 20^{OW} 20 links. (SCRIBED $\frac{1}{4}$ S 27 NBT).
Maple 13 S 6^{OW} 36 links. (SCRIBED $\frac{1}{4}$ S 34 NBT).

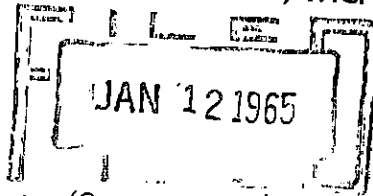
Description as to how corner was located: No evidence of the original corner present. Thus, set by proportionate measurement. Since both the section corners $\frac{1}{2}$ mile east and west respectively, have been previously established with a distance between them of 81.31 chains, the quarter corner was set 40.65 $\frac{1}{2}$ chains from either corner and on a straight line between them.



O = Corner monument restored

89612

RECORDING OFFICE
FOREST COUNTY, WIS.



Resident witnesses _____

Dated at Crandon, Wisconsin, this 12th day of January, 1965.

Signature Neal Sperhake
Title Registered Land Surveyor Registration No. 463

~~Office of~~ Forest County ~~of~~ Wisconsin,
I hereby certify that the within instrument was ~~filed in the~~ filed in the office of the recorder on the 12th day of January 1965, and was ~~filed in the~~ filed in the signed and ~~Page No.~~ sworn to before me.

Surveyor's Seal

Signature Anna Peterson Title Notary Public

43513270020

Index No. 435