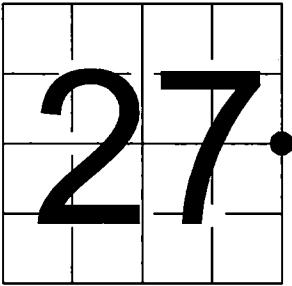


U.S. PUBLIC LAND SURVEY  
MONUMENT RECORD

NOTE: This form is intended and designed to fulfill all requirements of Wisconsin Administrative Code,  
Chapter A-E 7.08 U.S. Public Land Survey Monument Record (3) (a-l)

A-E 7.08(3)(a) Identity of corner:  
East 1/4 Corner Section 27,  
Township 35 North, Range 13 East  
of the Fourth Principal Meridian,  
Town of Lincoln, Forest County, Wisconsin

WISCRS - FOREST COUNTY  
N: 539,983.908 USft (XXX,XXX.XXX)  
E: 851,864.938 USft (XXX,XXX.XXX)  
Datum: NAD83 (2011)  
GNSS Method RTN  
GNSS Control WISCORS VRS



The coordinate value shown has been verified by the average of two or more GPS observations  
at a markedly different time. Coordinates shown in parenthesis are previously published values.

A-E 7.08(3)(b)

Original Surveyor: James L. Nowlin - September 11, 1865 to September 21, 1865  
Sugar 10 - N 29° E, 25 Links, Birch 12 - S 70° W, 32 Links

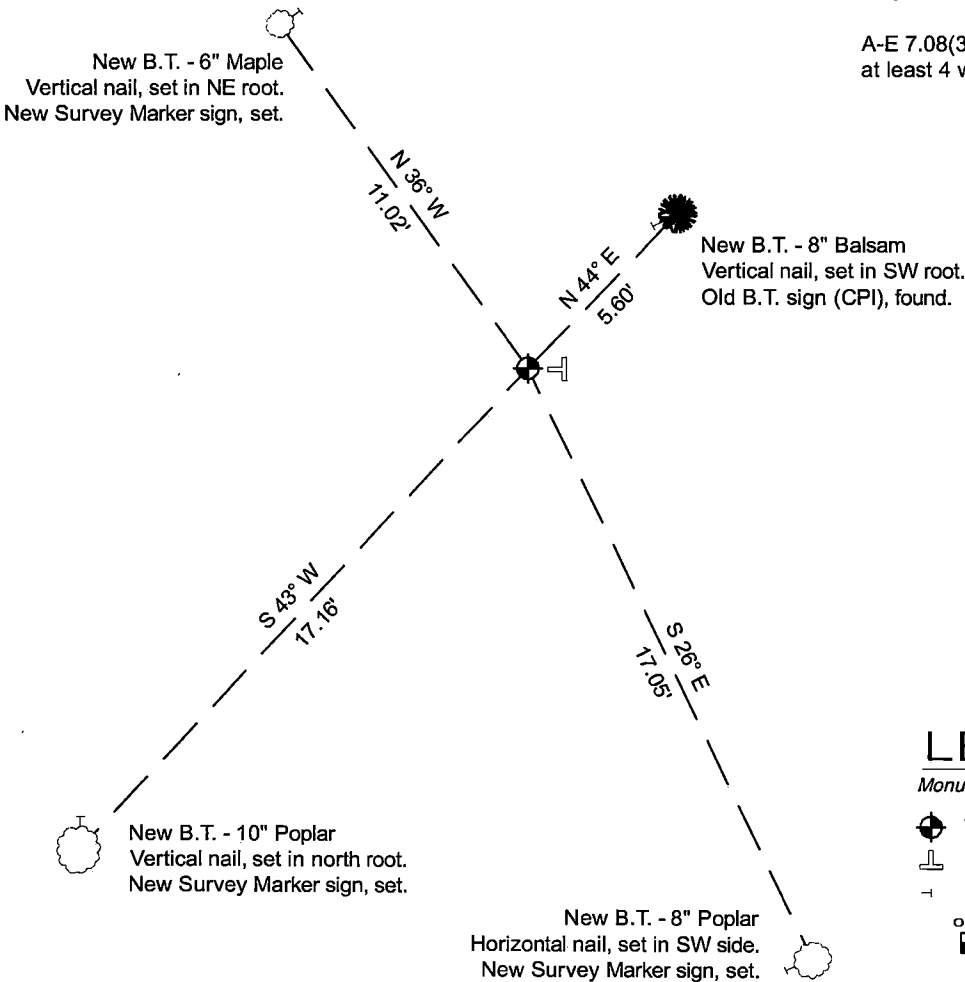
See previous Restoration of Lost Original Government Survey Corner - T17- January 12, 1965 - Surveyor 463 - Neal Sperhake - THENCE:

- April 08, 2013 - Surveyor 2656 - Jeffrey L. DeMuth - indicates this position as "1" iron pipe with 2" aluminum cap" on county record map #351327-20130408.
- September 8, 2023 - Surveyor 3032 - Michael J. Hoffman - indicates this position as "aluminum capped monument" on county record map #351326-20230908.
- January 15, 2024 - Surveyor 1783 - Thomas J. McGuire - indicates this position as "iron pipe with cap" on Certified Survey Map 242309 & Certified Survey Map 242336.

June 11, 2025 - I found a 1.25" diameter galvanized iron pipe with a 4" diameter aluminum Kimberly Clark cap, stamped to identify the corner location. The monument is on highland and extends ±12" above grade. I did not find any of Sperhake's bearing trees.

I established 4 new reference monuments as shown below.

A-E 7.08(3)(c)(d) Plan view of corner with references to at least 4 witness monuments.

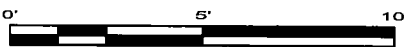


Bearings listed to the nearest second  
are referenced to the:  
Wisconsin County Coordinate  
Reference System,  
Forest County Zone.  
All other bearings are magnetic.

LEGEND

Monument sizes = outside diameter measurements.

- ⊕ This Corner
- ⊥ Vinyl T-post, set ±1 foot east of corner
- ⊥ Galvanized nail, set or nail found as shown

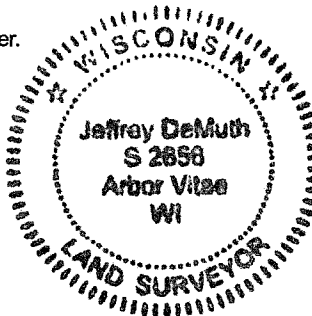


A-E 7.08(3)(e) 1865 Surveyor set a post, 1965 Surveyor set a galvanized iron pipe with an aluminum cap, subsequent surveyors found similar. I found a 1.25" diameter galvanized iron pipe with a 4" diameter aluminum Kiberly Clark cap in 2025.

A-E 7.08(3)(f) I accept this monument in good faith as a FOUND PERPETUATED LOCATION of the corner.

A-E 7.08(3)(g)(h) This corner was previously determined through lost-corner-proportionate methods.

A-E 7.08(3)(i) I, Jeffrey L. DeMuth, Professional Land Surveyor No. S-2656, hereby certify that the corner location on this record was determined by me or under my direction and control, and that this U.S. Public Land Survey Monument Record is correct and complete to the best of my knowledge, and belief.



SIGNATURE

June 12, 2025

DATE

43513272000

43513272000

T17

State of Wisconsin

County of FOREST

ss. RESTORATION OF LOST ORIGINAL GOVERNMENT SURVEY CORNER.

I NEAL SPERHAKE, do hereby certify that on the SEVENTEENTH day of SEPTEMBER, 19 64, I established the WEST QUARTER SECTION CORNER OF SECTION 26, TOWNSHIP 35 NORTH, RANGE 13 EAST, Fourth Principal Meridian, as described hereon.

**History:** This corner was established during the original survey of this township, as noted in the original field notes for the original survey of T35N-R13E, 4th. p.m.

**Description of monument and accessories I established to perpetuate the location of this corner:**

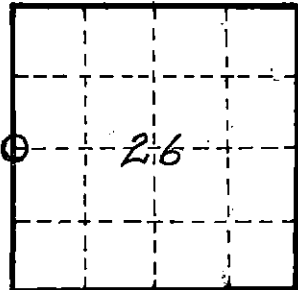
At the point determined for the location of the corner I emplaced a:

GALVANIZED IRON PIPE, THREE FEET LONG, ONE INCH IN DIAMETER, WITH ALUMINUM CAP DENOTED AS, "KIMBERLY CLARK CORP. T35N 1/4 BTWN. 27 & 26 R13E SPERHAKE RLS 463 9/17/64."

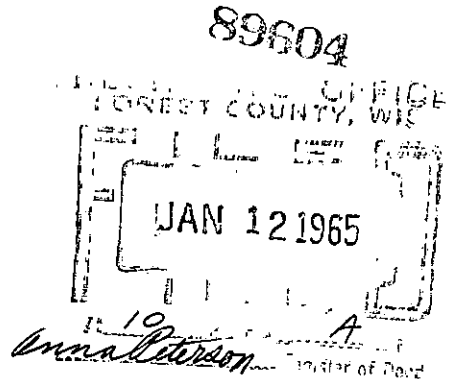
The pipe is witnessed by:

Spruce 6 N 54°E 8 links. (SCRIBED 1/4 S 26 NBT).  
Spruce 5 S 15°W 6 1/2 links. (SCRIBED 1/4 S 27 NBT).

**Description as to how corner was located:** No evidence of the original corner present. Thus, set by proportionate measurement. Since both the section corners 1/2 mile north and south have been previously established with a distance between them of 80.46 1/2 chains, the quarter corner was set 40.23 1/4 chains from either corner and on a straight line between them.



O = Corner monument restored



Resident witnesses \_\_\_\_\_

Dated at Crandon, Wisconsin, this 12th day of January, 19 65.

Signature \_\_\_\_\_

Title Registered Land Surveyor Registration No. 463

~~Office of~~ Forest County ~~of~~ Wisconsin,  
I hereby certify that the within instrument was ~~filed in this~~  
~~office of records~~ on the 12th day of January  
19 65, and was ~~filed in Book No.~~ signed and Page No. sworn to  
~~of County Records~~ before me.

Surveyor's Seal

Signature Anna Peterson Title Notary Public

4351327 2000

Index No. **117**