

U.S. PUBLIC LAND SURVEY MONUMENT RECORD

This form is intended and designed to fulfill all requirements of Wisconsin Administrative Code, Chapter A-E 7.08 U.S. Public Land Survey Monument Record (3) (a)(b)(c)(d)(e)(f)(g)(h)(i).

The coordinate value shown has been verified by at least one of the following methods: 1) Comparison to a previously GNSS determined published value; 2) The value is the average of two or more GNSS observations at a markedly different time; 3) One or more distances were measured back to the GNSS observed corner from temporary GNSS observed offset locations.

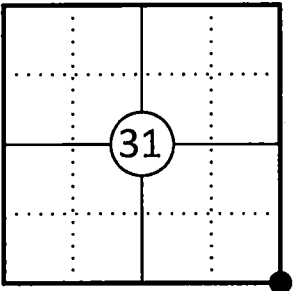
A-E 7.08(3)(a) Identity of the corner:

SE Corner Section 31	WISCRS - Forest County
Township 35 North	N: 532157.92 USFT
Range 13 East	E: 836132.04 USFT
Town of Nashville	Datum: NAD 83 (2011)
County of Forest	GNSS Method: WISCRS VRS Direct Observation

Original Corner Information:

Original Surveyor: Alfred Millard	Original B.T.'s: Elm 12" - N75°E, 27 links
Date of Survey: August 1857	Y Birch 14" - N35°W, 57 links
	Elm 12" S54°W, 19 links
	Sugar 18" S75°E, 15 links

Corner ID: 43513310000

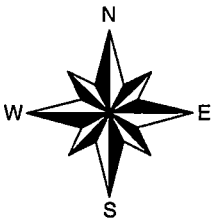
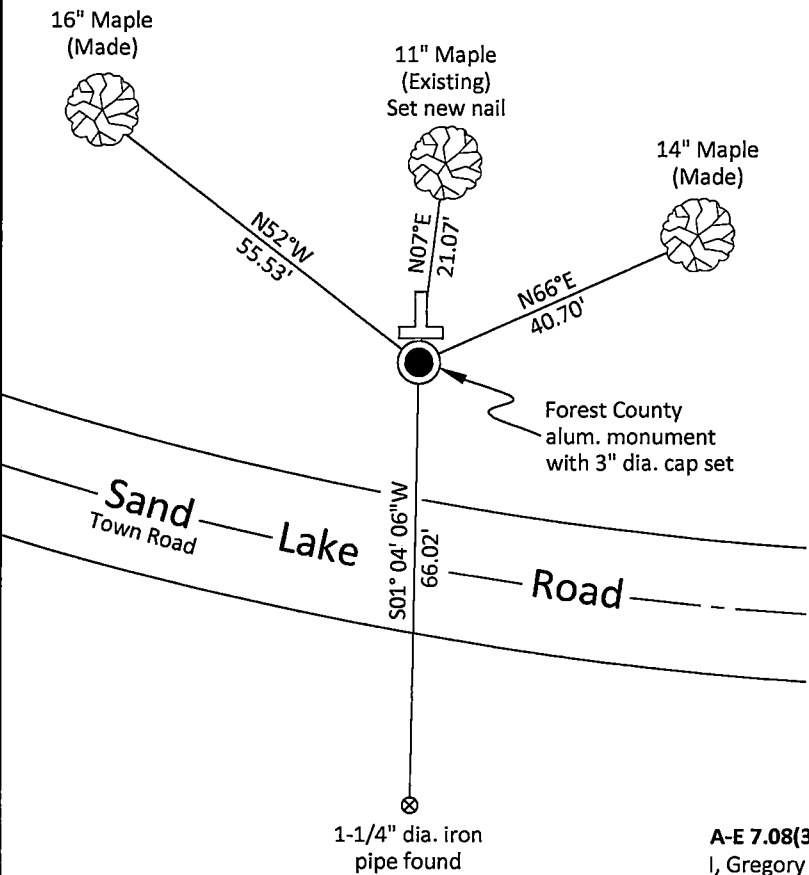


A-E 7.08(3)(b)(e)(f)(g) Describe any record evidence, monument evidence, occupational evidence, testimonial evidence or any other material evidence considered. Describe any discrepancy between the corner restored and any previously established location. State whether the corners was restored through acceptance of obliterated evidence, a found perpetuated location, or determined by proportionate methods.

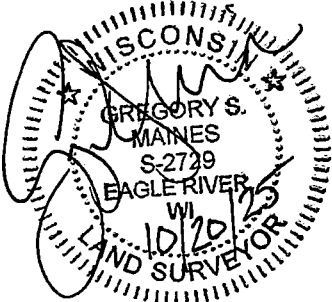
- 10/30/1975 Certified Land Corner Restoration by Thomas R. Arnott indicates he found a 2" dia. iron pipe and wood post and reset corner with a new Forest County aluminum monument and made three bearing trees. (See corner form for prior history and additional information).
- 1966 W.H. Stuth with Owens-Illinois indicates corner by others on his survey prepared on March 5, 1987.
- 10/09/1975 L. Ernest George, Certified Survey Map Vol.2, Pg. 121 indicates a found iron pipe.
- 12/20/2002 Eugene C. Uttech, Forest Co Surveyor File # 341305-20021220 found an aluminum monument.
- 10/16/2025 I found an existing aluminum monument bent with the cap missing at the corner location and one existing bearing tree. We straightened up the monument and replaced it with a Forest County aluminum monument with a 3" dia. cap stamped to identify the corner 2" above grade at the corner location. I made 2 additional bearing trees and used an iron pipe south of Sand Lake Road to witness the corner as shown below.

A-E 7.08(3)(c)(d)(e)(h) Plan view of corner with ties to at least four witnesses. If in disagreement with previously established corner, show the distances between the two corners and also indicate the tie to the disputed corner. Distances and directions to other PLSS used as evidence or for proportioning.

Bearings given to the nearest second are Forest County Grid. All other bearings are magnetic



- * Vinyl "T" post 0.9' north of corner.
- * Distances to bearing trees are to nail in side with BT tag on tree.
- * Sketch is not to scale



A-E 7.08(3)(i) - Certification
I, Gregory S. Maines, Professional Land Surveyor No. 2729, hereby certify that the corner location on this record was referenced by me or under my direction and control and that this U.S. Public Land Survey Monument Record is complete to the best of my knowledge and belief.

CERTIFIED LAND CORNER RESTORATION

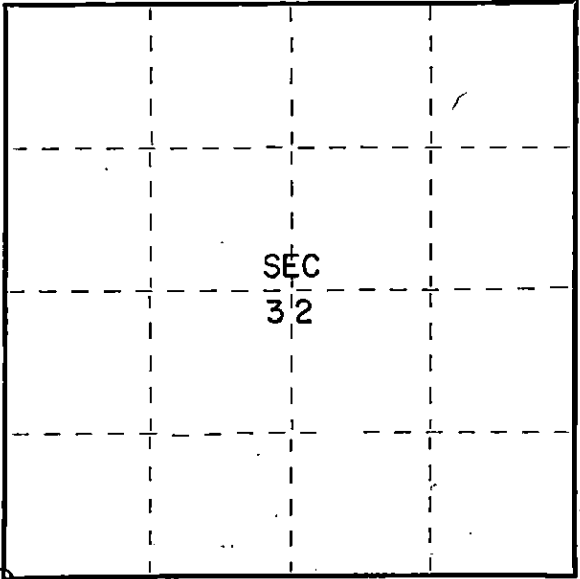
Index No. 2755

State of Wisconsin }
County of Forest } ss.

I Thomas R. Arnott, do hereby
certify that on the 21st day
of September, 1975, I found
evidence of the section
corner of sections 5, 6, 31, & 32
Township 34 - 35, North, Range
13 E, Fourth Principal Meridian,
as described hereon; and that from this evidence
I established a new monument and accessories
as described hereon to perpetuate the original
location of this corner.

Resident witnesses:

Herbert Wagoner



○ = Corner monument restored.

History of original corner establishment:

Elm	12	N75E	27 Lks.
Y. Birch	14	N35W	57 Lks.
Elm	12	S54W	19 Lks.
Sugar	18	S75E	15 Lks.

Description of corner evidence found:

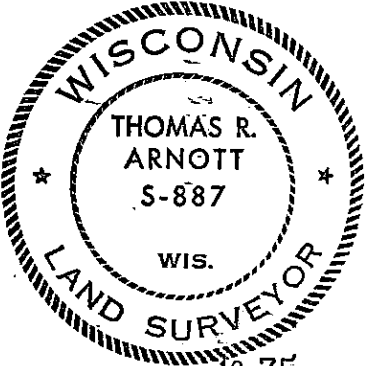
2" iron pipe found
wood post found

Description of monument and accessories I established to perpetuate the original location of this corner.

Reset corner with new Forest County aluminum monument

Ties:

Maple	6"	N8E	21.00 feet
Maple	6"	S76E	12.71 feet (BT found)
Elm	6"	S76W	9.35 feet (BT found)



Dated at Crandon, Wis., this 30th day of October, 1975.

Signature Thomas R. Arnott Title Land Surveyor Registration No. S-887
(County Surveyor, Registered Land Surveyor, or other duly authorized official)

Office of Register of Deeds, County of Forest, I hereby certify that the within
instrument was filed in this office for record on the 30th day of October, 1975
at 3 o'clock P.M.

Eugene Stutzman Document Number 108127
(Register of Deeds)

By _____ Deputy

4351331 0000