

U.S. PUBLIC LAND SURVEY MONUMENT RECORD

247026

FILED ON:

10/21/2025 09:59 AM

CORTNEY BRITTEN CLEEREMAN
REGISTER OF DEEDS

FOREST COUNTY WI

PAGES: 1

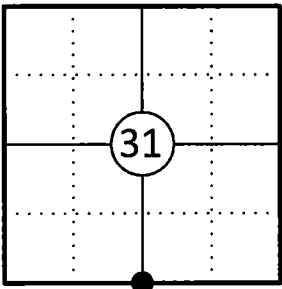
This form is intended and designed to fulfill all requirements of Wisconsin Administrative Code, Chapter A-E 7.08 U.S. Public Land Survey Monument Record (3) (a)(b)(c)(d)(e)(f)(g)(h)(i).

The coordinate value shown has been verified by at least one of the following methods: 1) Comparison to a previously GNSS determined published value; 2) The value is the average of two or more GNSS observations at a markedly different time; 3) One or more distances were measured back to the GNSS observed corner from temporary GNSS observed offset locations.

A-E 7.08(3)(a) Identity of the corner:

S 1/4 Corner Section 31	WISCRS - Forest County
Township 35 North	N: 532179.391 USFT
Range 13 East	E: 833489.994 USFT
Town of Nashville	Datum: NAD 83 (2011)
County of Forest	GNSS Method: WISCORS VRS Direct Observation

Corner ID: 43513310020



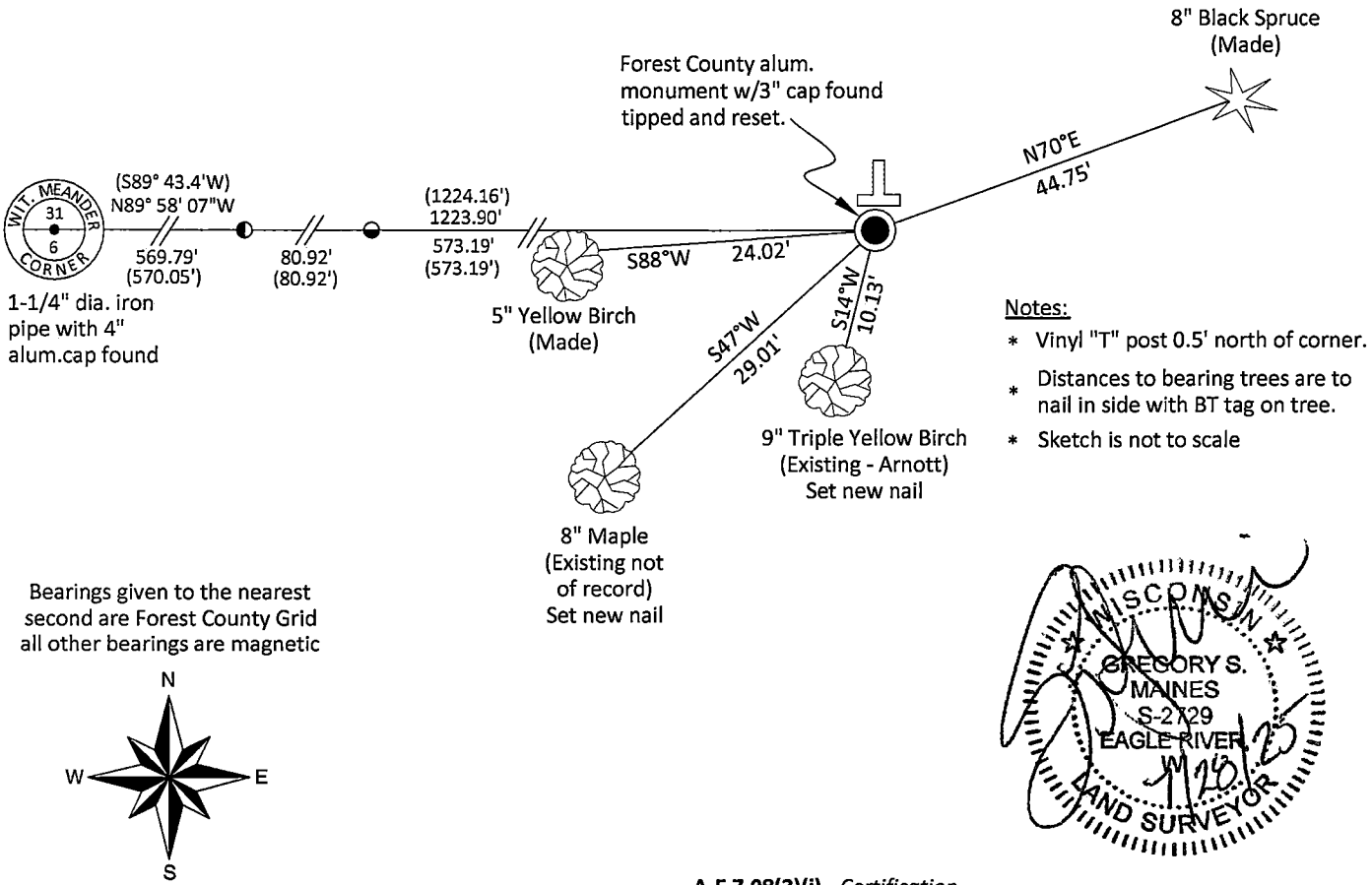
Original Corner Information:

Original Surveyor: Alfred Millard	Original B.T.'s: Tamarack 10" - N39°E, 16 links
Date of Survey: August 1857	Tamarack 10" S25°W, 18 links

A-E 7.08(3)(b)(e)(f)(g) Describe any record evidence, monument evidence, occupational evidence, testimonial evidence or any other material evidence considered. Describe any discrepancy between the corner restored and any previously established location. State whether the corners was restored through acceptance of obliterated evidence, a found perpetuated location, or determined by proportionate methods.

- 10/30/1975 Certified Land Corner Restoration by Thomas R. Arnott indicates he found a 2" dia. iron pipe and wood post. He reset the iron pipe with a new Forest County aluminum monument and made two new bearing trees. (See corner form for prior history and additional information).
- 10/15/1975 John H. Fisher, Forest Co Surveyor File # 351331-19751015 found 2" dia. iron pipe in place and notes the following bearing trees - 10" Tamarack stump N39°E, 10.6'; 10" Tamarack stump S25°W, 12.0'; 6" Maple S36°W, 15.6' and 6" Maple N29°E, 19.3'.
- 07/29/1977 L. Ernest George, Certified Survey Map V2 P176 found Forest County Corner 2" iron pipe with aluminum cap.
- 10/04/2005 Michael A. Trembl, Forest Co Surveyor File # 341306-20051004 indicates existing 2-1/4" alum pipe with 3 1/4" alloy cap.
- 3/10/2025 I found the Forest County aluminum monument with a 3" dia. cap stamped to identify the corner tipped in a tag alder swamp along with two existing bearing trees, one being not of record. We straightened up the monument and reset it using Fishers' information to the west. This checked with the Arnott's existing bearing tree. I made two additional bearing trees to witness the corner as shown below.

A-E 7.08(3)(c)(d)(e)(h) Plan view of corner with ties to at least four witnesses. If in disagreement with previously established corner, show the distances between the two corners and also indicate the tie to the disputed corner. Distances and directions to other PLSS used as evidence or for proportioning.



- 2-1/2" dia. iron pipe found
- 2" dia. iron pipe found
- () Fisher's record measurement

A-E 7.08(3)(i) - Certification
I, Gregory S. Maines, Professional Land Surveyor No. 2729, hereby certify that the corner location on this record was referenced by me or under my direction and control and that this U.S. Public Land Survey Monument Record is complete to the best of my knowledge and belief.

43513310020

Index No.: 23

CERTIFIED LAND CORNER RESTORATION

Index No. 22-33

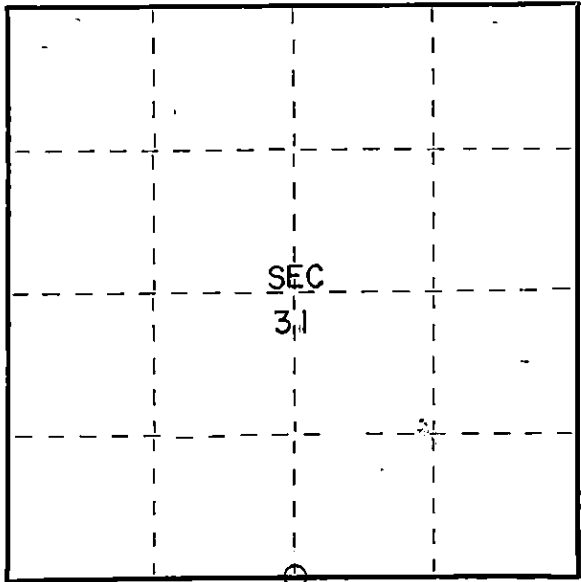
State of Wisconsin }
County of Forest } ss.

I Thomas R. Arnott, do hereby
certify that on the 22nd day
of September, 19 75, I found
evidence of the 1/4
corner of sections 6 & 31
Township 34 - 35, North, Range
13 E, Fourth Principal Meridian,
as described hereon; and that from this evidence
I established a new monument and accessories
as described hereon to perpetuate the original
location of this corner.

Resident witnesses:

Herbert Wagoner

FORM 985 H. C. MILLER CO., MILWAUKEE



○ = Corner monument restored.

History of original corner establishment:

Tamarac	10	N39E	16 Lks.
Tamarac	10	S25W	18 Lks.

Description of corner evidence found:

2" iron pipe found
wood post found

Description of monument and accessories I established to perpetuate the original location of this corner.

Reset iron pipe with new Forest County aluminum monument

Ties:

Maple	8"	N33E	19.54 feet (BT found)
Y. Birch	8"	S11W	9.42 feet



Dated at Crandon, Wis., this 30th day of October, 19 75.

Signature Thomas R. Arnott Title Land Surveyor Registration No. S-887
(County Surveyor, Registered Land Surveyor, or other duly authorized official)

Office of Register of Deeds, County of Forest, I hereby certify that the within
instrument was filed in this office for record on the 30th day of October, 19 75
at 1 o'clock P. M.

Eugene Stutzman Document Number 108116
(Register of Deeds)

By _____ Deputy

A 351331 0020