

U.S. PUBLIC LAND SURVEY MONUMENT RECORD

This form is intended and designed to fulfill all requirements of Wisconsin Administrative Code, Chapter A-E 7.08 U.S. Public Land Survey Monument Record (3) (a)(b)(c)(d)(e)(f)(g)(h)(i).

The coordinate value shown has been verified by at least one of the following methods: 1) Comparison to a previously GNSS determined published value; 2) The value is the average of two or more GNSS observations at a markedly different time; 3) One or more distances were measured back to the GNSS observed corner from temporary GNSS observed offset locations.

A-E 7.08(3)(a) Identity of the corner:

Witness Meander Corner Section 31

Township 35 North

Range 13 East

Town of Nashville

County of Forest

WISCRS - Forest County

N: 532180.059 USFT

E: 832266.093 USFT

Datum: NAD 83 (2011)

GNSS Method: WISCRS VRS Direct Observation

Original Corner Information:

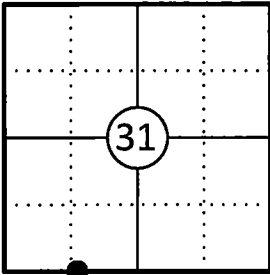
Original Surveyor: Alfred Millard

Date of Survey: August 1857

Original B.T.'s: W Pine 15" - S45°E, 41 links

Hemlock 10" N87°E, 45 links

Corner ID: 43513310029



A-E 7.08(3)(b)(e)(f)(g) Describe any record evidence, monument evidence, occupational evidence, testimonial evidence or any other material evidence considered. Describe any discrepancy between the corner restored and any previously established location. State whether the corners was restored through acceptance of obliterated evidence, a found perpetuated location, or determined by proportionate methods.

- 01/12/1965

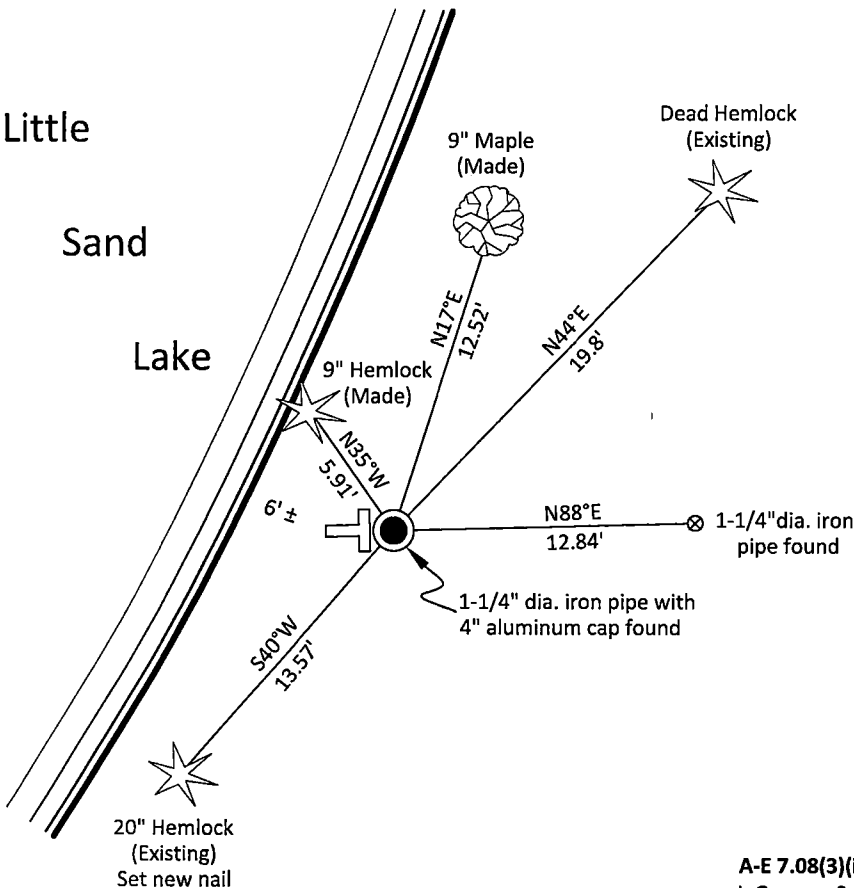
Certified Land Corner Restoration by Neal Sperhake indicates he set a 1" dia. iron pipe with a Kimberly Clark Corp aluminum cap as a witness corner to the original MC 21.78' west and made two new bearing trees. (See corner form for prior history and additional information).
- 10/15/1975

John H. Fisher, Forest Co Surveyor File # 351331-19751015 found 1" dia. iron pipe in place and notes two bearing trees: 6" Hemlock N42°E, 19.7' and 7" Hemlock S28°W, 13.4'.
- 07/29/1977

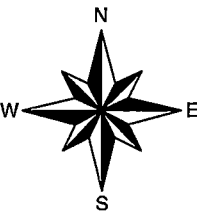
L. Ernest George Certified Survey Map V2 Pg 176 indicates 1" dia. iron pipe with 4" aluminum cap. He also set a 1" dia. pipe 13 feet east of corner.
- 03/07/2025

I found and accepted a 1-1/4" dia. iron pipe with a Kimberly Clark Corp 4" dia. aluminum cap stamped to identify the corner 4" above grade at the corner location and two existing bearing trees one of which is dead and an iron pipe east of corner. I made two additional bearing trees to witness the corner as shown below.

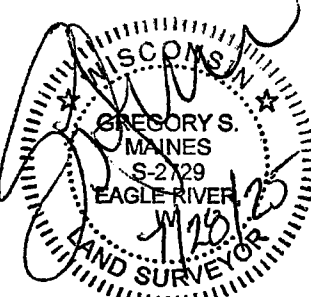
A-E 7.08(3)(c)(d)(e)(h) Plan view of corner with ties to at least four witnesses. If in disagreement with previously established corner, show the distances between the two corners and also indicate the tie to the disputed corner. Distances and directions to other PLSS used as evidence or for proportioning.



Bearings given to the nearest second are Forest County Grid all other bearings are magnetic



- \* Vinyl "T" post 0.4' west of corner.
- \* Distances to bearing trees are to nail in side with BT tag on tree.
- \* Sketch is not to scale



A-E 7.08(3)(i) - Certification  
I, Gregory S. Maines, Professional Land Surveyor No. 2729, hereby certify that the corner location on this record was referenced by me or under my direction and control and that this U.S. Public Land Survey Monument Record is complete to the best of my knowledge and belief.

Index No.: 22

43513310029

## Index No. 5

○ = Corner monument restored.

History of original corner establishment: This corner can also be described as: "THE WITNESS CORNER  
TO THE MEANDER CORNER BETWEEN SECTIONS 6, T34N-R13E AND  
31, T35N-R13E, 4th. p.m.

This corner was established during the original survey of this township, as noted in the original field notes for the original survey of T34N-R13E and T35N-R13E, 4th. p.m.

Description of corner evidence found:

At the time of the original survey the level of the lake was, apparently lower than it is today. Thus, it was necessary to set a witness corner 21.78 feet east of where the original bearing tree indicated the meander corner originally was placed.

The stump of the original bearing tree is described in the original field notes as:

"Hemlock 10 N 87<sup>0</sup>E 45 links."

Description of monument and accessories I established to perpetuate the original location of this corner.

At the site of the original post, as determined from the existing original bearing tree noted above, I emplaced a "Galvanized iron pipe, three feet long, one inch in diameter, with aluminum cap denoted as, 'Kimberly-Clark Corp. T34-35N W.C. to MC BTWN. 31 & 6 R13E W.C. CORNER IS WEST 21.78 FEET."

The pipe is witnessed by:

Hemlock 6 N 44<sup>0</sup>E 30 links. (SCRIBED S31 WC NBT).  
Hemlock 8 S 39<sup>0</sup>W 21 links. (SCRIBED S 6 WC NBT).

Dated at Crandon, Wis., this 12 day of January 1965, 1965.

Signature Mark A. Perkins Title Registered Land Surveyor Registration No. 463  
(County Surveyor, Registered Land Surveyor, or other duly authorized official)

Office of Registrar of Deeds, County of \_\_\_\_\_, I hereby certify that the within instrument was ~~received~~ <sup>signed & sworn to</sup> on the 12 day of January, 1965.

*Anna Peterson*  
 (Register of Deeds) Notary Public

By \_\_\_\_\_ Deputy

43513310029

89571

REGISTER'S OFFICE  
FOREST COUNTY, WIS.  
FILE  
JAN 12 1965  
FILE  
At 10 o'clock A.  
Anna Peterson Register of Deeds