

U.S. PUBLIC LAND SURVEY MONUMENT RECORD

This form is intended and designed to fulfill all requirements of Wisconsin Administrative Code, Chapter A-E 7.08 U.S. Public Land Survey Monument Record (3) (a)(b)(c)(d)(e)(f)(g)(h)(i).

The coordinate value shown has been verified by at least one of the following methods: 1) Comparison to a previously GNSS determined published value; 2) The value is the average of two or more GNSS observations at a markedly different time; 3) One or more distances were measured back to the GNSS observed corner from temporary GNSS observed offset locations.

A-E 7.08(3)(a) Identity of the corner:

SE Corner Section 32

Township 35 North

Range 13 East

Town of Lincoln

County of Forest

WISCORS - Forest County

N: 532077.102 USFT

E: 841382.342 USFT

Datum: NAD 83 (2011)

GNSS Method: WISCORS VRS Direct Observation

Original Corner Information:

Original Surveyor: Alfred Millard

Date of Survey: August 1857

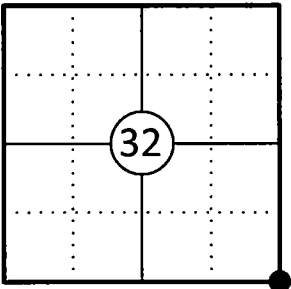
Original B.T.'s: Y Birch 12" - N72°W, 7 links

Y Birch 20" - N42°E, 50 links

Y Birch 12" - S78°W, 17 links

Sugar 12" - S52°E, 56 links

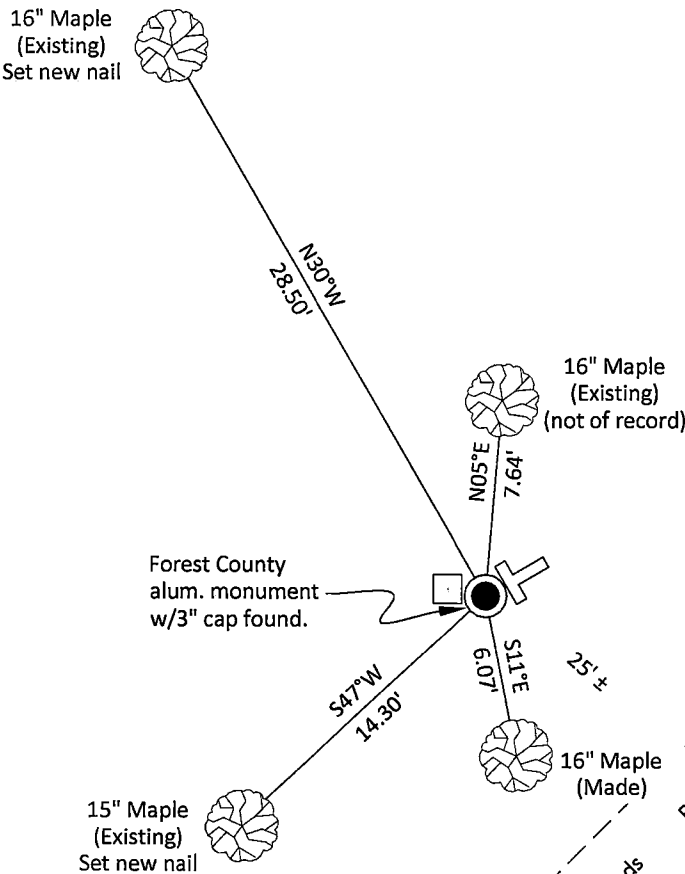
Corner ID: 43513320000



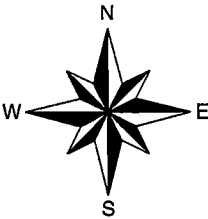
A-E 7.08(3)(b)(e)(f)(g) Describe any record evidence, monument evidence, occupational evidence, testimonial evidence or any other material evidence considered. Describe any discrepancy between the corner restored and any previously established location. State whether the corners was restored through acceptance of obliterated evidence, a found perpetuated location, or determined by proportionate methods.

- 10/30/1975 Certified Land Corner Restoration by Thomas R. Arnott indicates he found a 1-1/2" dia. iron pipe and a wood post. He reset corner with new Forest County aluminum monument and made three bearing trees. (See corner form for prior history and additional information).
- 1966 W.H. Stuth indicates iron pipe or cap
- 12/20/2002 Eugene C. Uttech, Forest Co Surveyor File # 341305-20021220 indicates a found aluminum monument.
- 06/05/2015 Timothy J. Rusch, Forest Co Surveyor File 341303-20150605 indicates found aluminum capped monument.
- 03/07/2025 I found and accepted a Forest County aluminum monument with a 3" dia. cap stamped to identify the corner 12" above grade at the corner along with three existing bearing trees and a 4"x4" wood post west of the corner. I made one additional bearing tree to witness the corner as shown below.

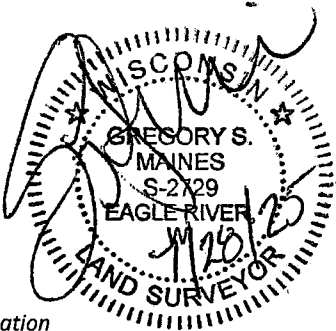
A-E 7.08(3)(c)(d)(e)(h) Plan view of corner with ties to at least four witnesses. If in disagreement with previously established corner, show the distances between the two corners and also indicate the tie to the disputed corner. Distances and directions to other PLSS used as evidence or for proportioning.



Bearings given to the nearest second are Forest County Grid all other bearings are magnetic



- * 4" x 4" wood post found 0.5' west of corner
- * Vinyl "T" post 0.8' northeast of corner.
- * Distances to bearing trees are to nail in side with BT tag on tree.
- * Sketch is not to scale



A-E 7.08(3)(i) - Certification
I, Gregory S. Maines, Professional Land Surveyor No. 2729, hereby certify that the corner location on this record was referenced by me or under my direction and control and that this U.S. Public Land Survey Monument Record is complete to the best of my knowledge and belief.

Index No.: 29

43513320000

CERTIFIED LAND CORNER RESTORATION

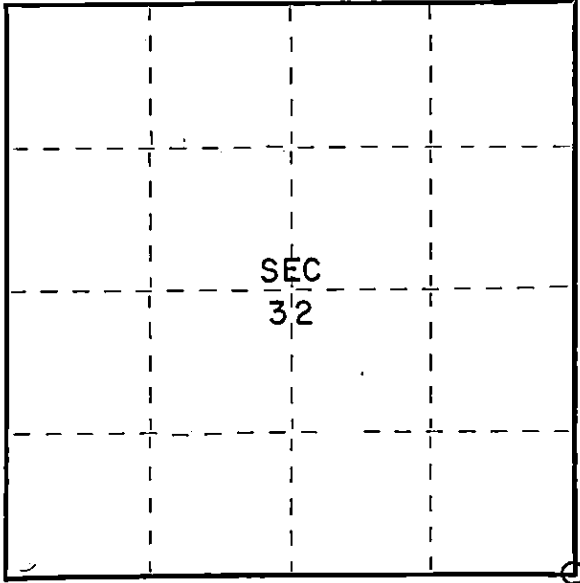
Index No. 2799

State of Wisconsin }
County of Forest } ss.

I Thomas R. Arnott, do hereby
certify that on the 20th day
of September, 1975, I found
evidence of the section
corner of sections 4, 5, 32 & 33
Township 34 - 35, North, Range
13 E, Fourth Principal Meridian,
as described hereon; and that from this evidence
I established a new monument and accessories
as described hereon to perpetuate the original
location of this corner.

Resident witnesses:

Herbert Wagoner



○ = Corner monument restored.

History of original corner establishment:

Y. Birch	12	N72W	7 Lks.
Y. Birch	20	N42E	50 Lks.
Y. Birch	12	S78W	17 Lks.
Sugar	12	S52E	56 Lks.

Description of corner evidence found:

1 1/2" iron pipe found
wood post found

Description of monument and accessories I established to perpetuate the original location of this corner.

Reset corner with new Forest County aluminum monument

Ties:

Maple	10"	N31E	33.02 feet
Maple	8"	S47W	14.30 feet
Maple	8"	N30W	28.50 feet



Dated at Crandon, Wis., this 30th day of October, 1975.

Signature Thomas R. Arnott Title Land Surveyor Registration No. S-887
(County Surveyor, Registered Land Surveyor, or other duly authorized official)

Office of Register of Deeds, County of Forest, I hereby certify that the within
instrument was filed in this office for record on the 30th day of October, 1975
at 3 o'clock P. M.

Eugene Staszny Document Number 108128
(Register of Deeds)

By _____ Deputy

FORM 985 H. C. MILLER CO., MILWAUKEE

43513320000