

U.S. PUBLIC LAND SURVEY MONUMENT RECORD

This form is intended and designed to fulfill all requirements of Wisconsin Administrative Code, Chapter A-E 7.08 U.S. Public Land Survey Monument Record (3) (a)(b)(c)(d)(e)(f)(g)(h)(i).

The coordinate value shown has been verified by at least one of the following methods: 1) Comparison to a previously GNSS determined published value; 2) The value is the average of two or more GNSS observations at a markedly different time; 3) One or more distances were measured back to the GNSS observed corner from temporary GNSS observed offset locations.

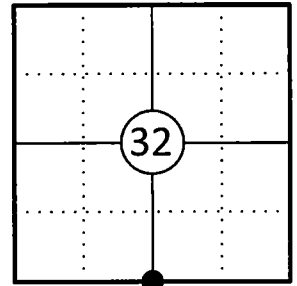
A-E 7.08(3)(a) Identity of the corner:

S 1/4 Corner Section 32	WISCORS - Forest County
Township 35 North	N: 532149.024 USFT
Range 13 East	E: 838642.138 USFT
Town of Lincoln	Datum: NAD 83 (2011)
County of Forest	GNSS Method: WISCORS VRS Direct Observation

Original Corner Information:

Original Surveyor: Alfred Millard	Original B.T.'s: Sugar 9" - N58°E, 5 links
Date of Survey: August 1857	Sugar 16" - S22°W, 50 links

Corner ID: 43513320020



A-E 7.08(3)(b)(e)(f)(g) Describe any record evidence, monument evidence, occupational evidence, testimonial evidence or any other material evidence considered. Describe any discrepancy between the corner restored and any previously established location. State whether the corners was restored through acceptance of obliterated evidence, a found perpetuated location, or determined by proportionate methods.

12/15/1975 Certified Land Corner Restoration by Thomas R. Arnott indicates he found an iron pipe and reset corner with new Forest County aluminum monument and made two bearing trees. (See corner form for prior history and additional information).

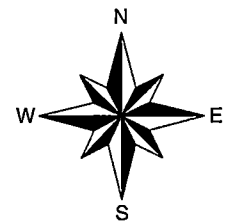
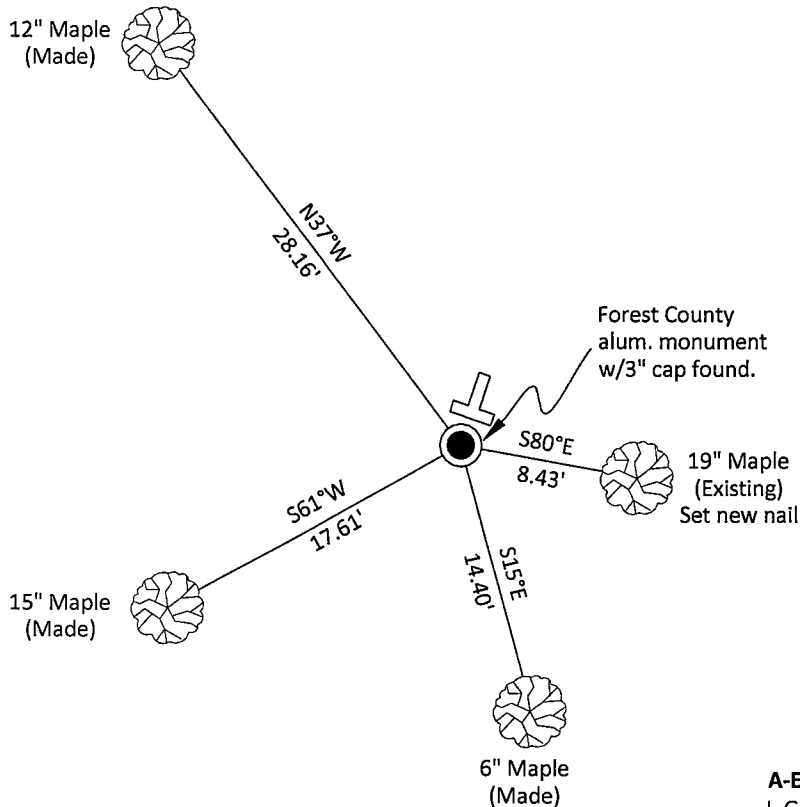
12/20/2002 Eugene C. Uttech, Forest Co Surveyor File # 341305-20021220 found aluminum monument.

05/18/2017 Todd J. Loftus, Forest Co Surveyor File # 341305-20170518 found aluminum monument.

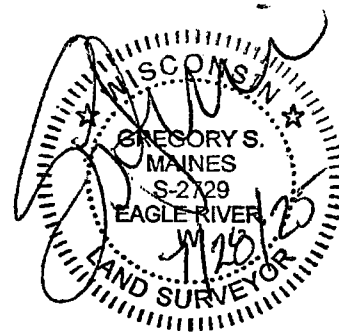
03/07/2025 I found and accepted a Forest County aluminum monument with a 3" dia. cap stamped to identify the corner 14" above grade and one existing bearing tree. I made three additional bearing trees to witness the corner as shown below.

A-E 7.08(3)(c)(d)(e)(h) Plan view of corner with ties to at least four witnesses. If in disagreement with previously established corner, show the distances between the two corners and also indicate the tie to the disputed corner. Distances and directions to other PLSS used as evidence or for proportioning.

Bearings given to the nearest second are Forest County Grid all other bearings are magnetic



- * Vinyl "T" post 0.7' northeast of corner.
- * Distances to bearing trees are to nail in side with BT tag on tree.
- * Sketch is not to scale



A-E 7.08(3)(i) - Certification

I, Gregory S. Maines, Professional Land Surveyor No. 2729, hereby certify that the corner location on this record was referenced by me or under my direction and control and that this U.S. Public Land Survey Monument Record is complete to the best of my knowledge and belief.

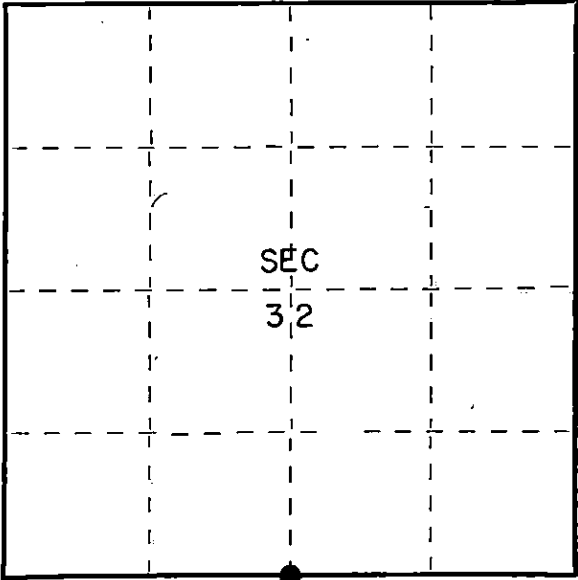
CERTIFIED LAND CORNER RESTORATION

Index No. 22-77

State of Wisconsin }
County of Forest } ss.

I Thomas R. Arnott, do hereby
certify that on the 14th day
of December, 1975, I found
evidence of the 1/4
corner of sections 5 & 32
Township 34-35, North, Range
13 E, Fourth Principal Meridian,
as described hereon; and that from this evidence
I established a new monument and accessories
as described hereon to perpetuate the original
location of this corner.

Resident witnesses:



○ = Corner monument restored.

History of original corner establishment:

Sugar	9	N58E	5 Lks.
Sugar	16	S22W	50 Lks.

Description of corner evidence found:

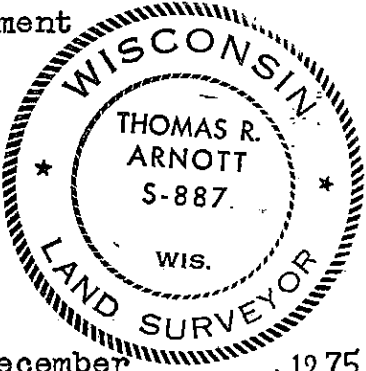
iron pipe found

Description of monument and accessories I established to perpetuate the original location of this corner.

Reset iron pipe with new Forest County aluminum monument

Ties:

Maple	6	S75E	8.43 feet
Maple	5	S62W	18.12 feet



Dated at Crandon, Wis., this 15th day of December, 1975.

Signature Thomas R. Arnott Title Land Surveyor Registration No. S-887
(County Surveyor, Registered Land Surveyor, or other duly authorized official)

Office of Register of Deeds, County of Forest, I hereby certify that the within
instrument was filed in this office for record on the 15th day of December, 1975
at 11 o'clock A M.

Eugene Staszny
(Register of Deeds)

Document Number 108381

By _____ Deputy

FORM 985 H. C. MILLER CO., MILWAUKEE

43513320020