

U.S. PUBLIC LAND SURVEY MONUMENT RECORD

This form is intended and designed to fulfill all requirements of Wisconsin Administrative Code, Chapter A-E 7.08 U.S. Public Land Survey Monument Record (3) (a)(b)(c)(d)(e)(f)(g)(h)(i).

The coordinate value shown has been verified by at least one of the following methods: 1) Comparison to a previously GNSS determined published value; 2) The value is the average of two or more GNSS observations at a markedly different time; 3) One or more distances were measured back to the GNSS observed corner from temporary GNSS observed offset locations.

A-E 7.08(3)(a) Identity of the corner:

SE Corner Section 33

Township 35 North

Range 13 East

Town of Lincoln

County of Forest

WISCORS - Forest County

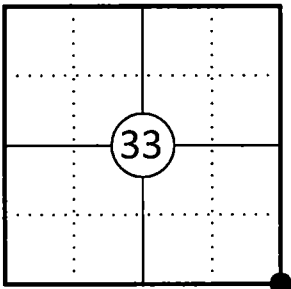
N: 531999.407 USFT

E: 846628.500 USFT

Datum: NAD 83 (2011)

GNSS Method: WISCORS VRS Direct Observation

Corner ID: 43513330000



Original Corner Information:

Original Surveyor: Alfred Millard

Date of Survey: August 1857

Original B.T.'s: Y Birch 18 N45°E 28 links

Lynn 18 N52°W 13 links

Sugar 14 S9°E 5 links

Elm 11 S40°W 38 links

A-E 7.08(3)(b)(e)(f)(g) Describe any record evidence, monument evidence, occupational evidence, testimonial evidence or any other material evidence considered. Describe any discrepancy between the corner restored and any previously established location. State whether the corners was restored through acceptance of obliterated evidence, a found perpetuated location, or determined by proportionate methods.

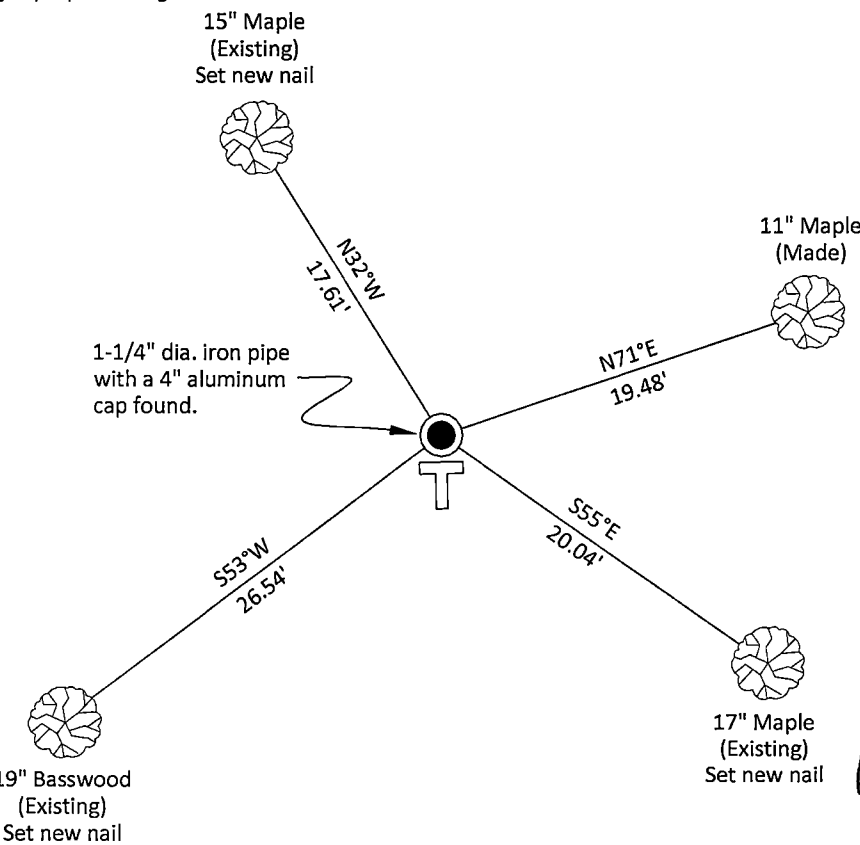
04/11/1963 Certified Land Corner Restoration by Neal Sperhake, indicates he set a 1" dia. iron pipe with a Kimberly Clark Corp aluminum cap from original bearing tree. (See corner form for prior history and additional information).

1966 W.H. Stuth indicates corner by others.

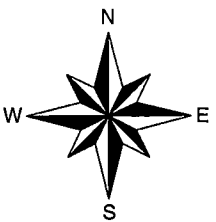
06/05/2015 Timothy J. Rusch Forest County Survey File # 341303-20150605 found aluminum capped monument.

03/28/2025 I found and accepted a 1-1/4" dia. iron pipe with a Kimberly Clark Corp 4" dia. aluminum cap stamped to identify the corner 10" above grade with a 1" dia. iron pipe alongside corner. I found three of Sperhake's bearing trees. I made one additional bearing tree to witness the corner as shown below.

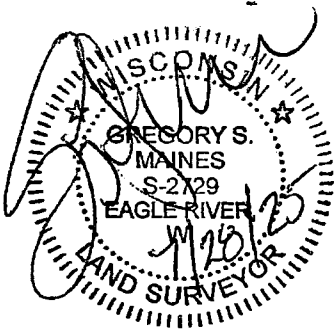
A-E 7.08(3)(c)(d)(e)(h) Plan view of corner with ties to at least four witnesses. If in disagreement with previously established corner, show the distances between the two corners and also indicate the tie to the disputed corner. Distances and directions to other PLSS used as evidence or for proportioning.



Bearings given to the nearest second are Forest County Grid all other bearings are magnetic



- * Vinyl "T" post 1.3' south of corner.
- * Distances to bearing trees are to nail in side with BT tag on tree.
- * Sketch is not to scale



A-E 7.08(3)(i) - Certification
I, Gregory S. Maines, Professional Land Surveyor No. 2729, hereby certify that the corner location on this record was referenced by me or under my direction and control and that this U.S. Public Land Survey Monument Record is complete to the best of my knowledge and belief.

Index No.: 2/3

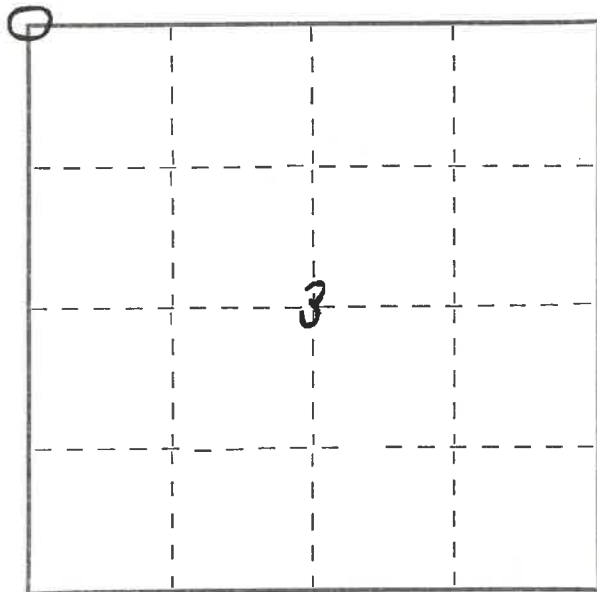
43513330000

State of Wisconsin }
County of FOREST } ss.

I NEAL SPERHAKE, do hereby
certify that on the TWELFTH day
of DECEMBER, 1962, I found
evidence of the NORTHWEST SECTION
corner of SECTION 3
Township 34, North, Range
13 EAST, Fourth Principal Meridian,
as described hereon; and that from this evidence
I established a new monument and accessories
as described hereon to perpetuate the original
location of this corner.

Resident witnesses:

Richard Piontek - Waubesa



○ = Corner monument restored.

CERTIFIED LAND CORNER RESTORATION

Index No. A-13
A 13

History of original corner establishment:

This corner can also be described as: THE SECTION CORNER COMMON TO SECTION 3 AND 4,
T34N-R13E, AND SECTIONS 33 AND 34, T35N-R13E, 4TH P.M.

This corner was established during the original survey of this township, as noted in
the Original Field Notes for the Original Survey of T35N-R13E, 4th P.M.

Description of corner evidence found:

The original bearing tree, described in the original field notes as:

"Y. Birch 18 N45E 28 links"

is still present at this date, with a portion of the original scribe marks still visible.

Description of monument and accessories I established to perpetuate the original location of this corner.

At the site of the original post, as determined from the existing original bearing
tree noted above, I emplaced a "Galvanized iron pipe, three feet long, one inch in
diameter, with an aluminum cap denoted as, "Kimberly-Clark Corp T34-35N
33, 34, 3, 4, R13E Sperhake RLS 463 12-12-62".

The pipe is witnessed by:

Maple 12 N62°E 56½ links. (Scribed S34 NBT).
Maple 4 S58°E 30 links. (Scribed S 3NBT).
Basswood 4 S50°W 40 links. (Scribed S 4 NBT).
Maple 4 N35°W 27 links. (Scribed S33 NBT).

Dated at Crandon, Wis., this 11th day of April, 1963.

Signature [Signature] Title Registered Land Surveyor Registration No. S-463
(County Surveyor, Registered Land Surveyor, or other duly authorized official)

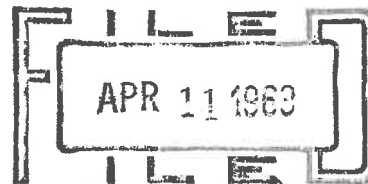
~~Office of Register of Deeds~~ County of Forest, I hereby certify that the within
instrument was ~~signed and sworn to~~ signed and sworn to on the 11th day of April, 1963
~~at~~ ~~at~~ at at at

Adeline De Noble
Notary Public ~~(Assistant Deed)~~ Forest County, Wis
My commission expires February 6, 1966 My Commission Expires Depos
By

43513330000
Surveyor's Seal

86985

REGISTER'S OFFICE
FOREST COUNTY, WIS.



At 2 o'clock P. M.
Karl A. Lange Register of Deeds
sp.