

U.S. PUBLIC LAND SURVEY MONUMENT RECORD

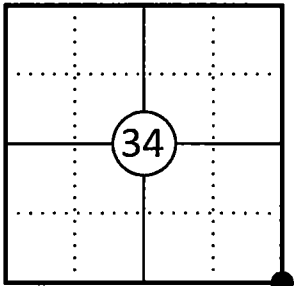
This form is intended and designed to fulfill all requirements of Wisconsin Administrative Code, Chapter A-E 7.08 U.S. Public Land Survey Monument Record (3) (a)(b)(c)(d)(e)(f)(g)(h)(i).

The coordinate value shown has been verified by at least one of the following methods: 1) Comparison to a previously GNSS determined published value; 2) The value is the average of two or more GNSS observations at a markedly different time; 3) One or more distances were measured back to the GNSS observed corner from temporary GNSS observed offset locations.

A-E 7.08(3)(a) Identity of the corner:

SE Corner Section 34	WISCRS - Forest County
Township 35 North	N: 532029.584 USFT
Range 13 East	E: 851864.636 USFT
Town of Lincoln	Datum: NAD 83 (2011)
County of Forest	GNSS Method: WISCRS VRS Direct Observation

Corner ID: 43513340000



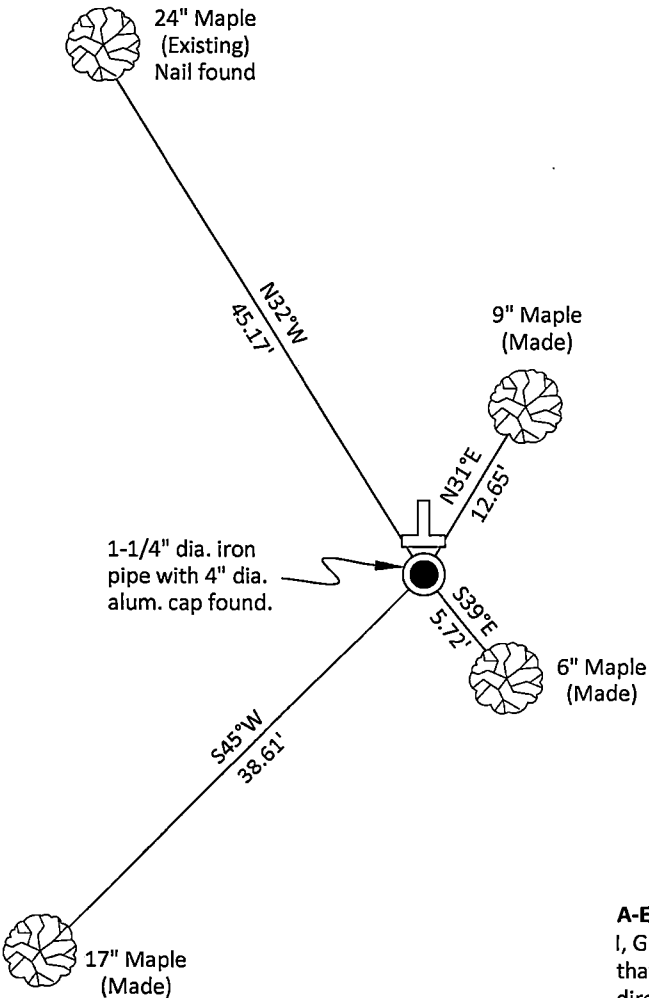
Original Corner Information:

Original Surveyor: Alfred Millard	Original B.T.'s: Hemlock 10" - N40°E, 38 links
Date of Survey: August 1857	Hemlock 12" - N11°W, 42 links
	Hemlock 10" - S60°W, 23 links
	Hemlock 12" - S35°E, 46 links

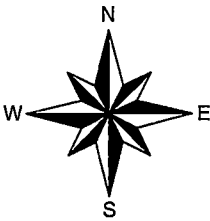
A-E 7.08(3)(b)(e)(f)(g) Describe any record evidence, monument evidence, occupational evidence, testimonial evidence or any other material evidence considered. Describe any discrepancy between the corner restored and any previously established location. State whether the corners was restored through acceptance of obliterated evidence, a found perpetuated location, or determined by proportionate methods.

- 02/11/1963 Certified Land Corner Restoration by Neal Sperhake where he set a 1" dia. iron pipe with a Kimberly Clark Corp aluminum cap from an original bearing tree and made four bearing trees. (See corner form for prior history and additional information).
- 10/25/2013 Timothy J. Rusch, Forest Co Surveyor File # 341335-20131025 found an aluminum capped monument.
- 06/05/2015 Timothy J. Rusch Forest Co Surveyor File # 341303-20150605 found an aluminum capped monument.
- 10/16/2025 I found and accepted a 1-1/4" dia. iron pipe with a Kimberly Clark Corp 4" dia. aluminum cap stamped to identify the corner 18" above grade at the corner location along with one bearing tree. I made three additional bearing trees to witness the corner as shown below.

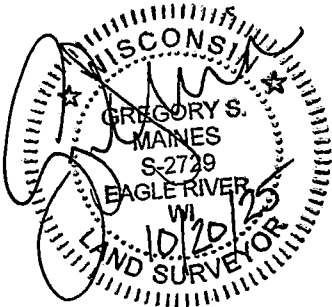
A-E 7.08(3)(c)(d)(e)(h) Plan view of corner with ties to at least four witnesses. If in disagreement with previously established corner, show the distances between the two corners and also indicate the tie to the disputed corner. Distances and directions to other PLSS used as evidence or for proportioning.



Bearings given to the nearest second are Forest County Grid. All other bearings are magnetic



- * Vinyl "T" post 1.0' north of corner.
- * Distances to bearing trees are to nail in side with BT tag on tree.
- * Sketch is not to scale



A-E 7.08(3)(i) - Certification
I, Gregory S. Maines, Professional Land Surveyor No. 2729, hereby certify that the corner location on this record was referenced by me or under my direction and control and that this U.S. Public Land Survey Monument Record is complete to the best of my knowledge and belief.

Index No.: 217

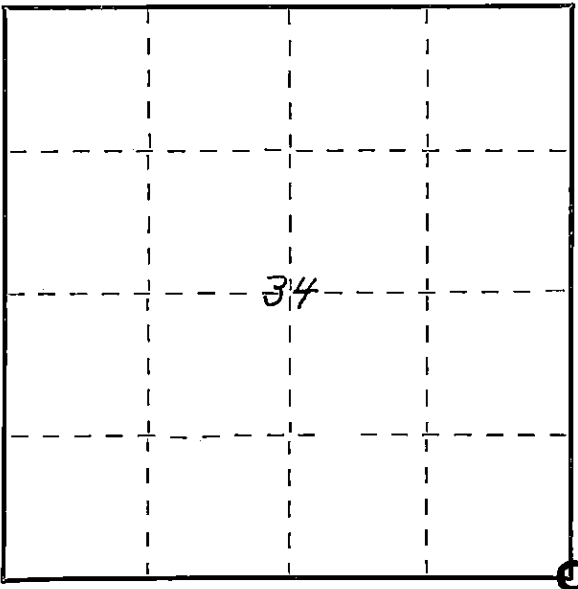
CERTIFIED LAND CORNER RESTORATION

Index No. 115
717

State of Wisconsin }
County of FOREST } ss.

I NEAL SPERHAKE, do hereby
certify that on the FIFTEENTH day
of NOVEMBER, 19 61, I found
evidence of the SOUTHEAST SECTION
corner of SECTION 34
Township 35, North, Range
13 EAST, Fourth Principal Meridian,
as described hereon; and that from this evidence
I established a new monument and accessories
as described hereon to perpetuate the original
location of this corner.

Resident witnesses:
Richard Piontek - Waubeno
David Pichotta - Waubeno



○ = Corner monument restored.

History of original corner establishment:
This corner can also be described as: THE SECTION CORNER COMMON TO SECTIONS 34 AND 35,
T35N-R13E, AND SECTIONS 2 AND 3, T34N-R13E, 4TH. P.M.

This corner was established during the original survey of this township, as noted
in the Original Field Notes for the Original Survey of T35N-R13E, 4th P. M.

Description of corner evidence found:
The stump of the original bearing tree, described in the original field notes as,
"HEMLOCK 12 S35E 46 LINKS"
is still present at this date, with a portion of the original scribe marks still visible.

Description of monument and accessories I established to perpetuate the original location of this corner.
At the site of the original post, as determined from the existing original bearing
tree noted above, I emplaced a "Galvanized iron pipe, three feet long, one inch in
diameter, with aluminum cap denoted as, 'Kimberly-Clark Corp T34-35N
34, 35, 2, 3, R13E Sperhake RLS 463 11-15-61".
The pipe is witnessed by:
Cherry 6 N21°E 35 links. (Scribed S35 NBT).
Maple 14 N34°W 69 links. (Scribed S34 NBT).
Maple 10 S 7°W 66 links. (Scribed S 3 NBT).
Cherry 5 S40°E 39 links. (Scribed S 2 NBT).

Dated at Grandon Wis. this 11th day of Feb, 19 63
Signature Neal Sperhake Title Registered Land Surveyor Registration No. S-463
(County Surveyor, Registered Land Surveyor, or other duly authorized official)
Office of Register of Deeds, County of Forest, I hereby certify that the within
instrument was filed in this office for record on the 11th day of Feb, 19 63
at 10 o'clock A M. 86844
Anna Peterson (Register of Deeds)
SUBSCRIBED & SWORN TO BEFORE ME THIS
11 th DAY OF FEB 19 63
Anna Peterson
Notary Public, Forest Co., Wis
Comm. expires 10/31/65
By _____ Deputy

FORM 985 H. C. MILLER CO., MILWAUKEE

43513340000
Surveyor's Seal