

U.S. PUBLIC LAND SURVEY MONUMENT RECORD

This form is intended and designed to fulfill all requirements of Wisconsin Administrative Code, Chapter A-E 7.08 U.S. Public Land Survey Monument Record (3) (a)(b)(c)(d)(e)(f)(g)(h)(i).

The coordinate value shown has been verified by at least one of the following methods: 1) Comparison to a previously GNSS determined published value; 2) The value is the average of two or more GNSS observations at a markedly different time; 3) One or more distances were measured back to the GNSS observed corner from temporary GNSS observed offset locations.

A-E 7.08(3)(a) Identity of the corner:

S 1/4 Corner Section 34

Township 35 North

Range 13 East

Town of Lincoln

County of Forest

WISCRS - Forest County

N: 532023.160 USFT

E: 849241.279 USFT

Datum: NAD 83 (2011)

GNSS Method: WISCRS VRS Direct Observation

Original Corner Information:

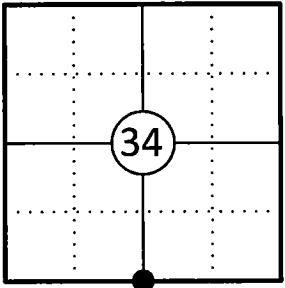
Original Surveyor: Alfred Millard

Date of Survey: August 1857

Original B.T.'s: Tamarack 12 N36°W 25 links

Hemlock 12 S52°E 18 links

Corner ID: 43513340020



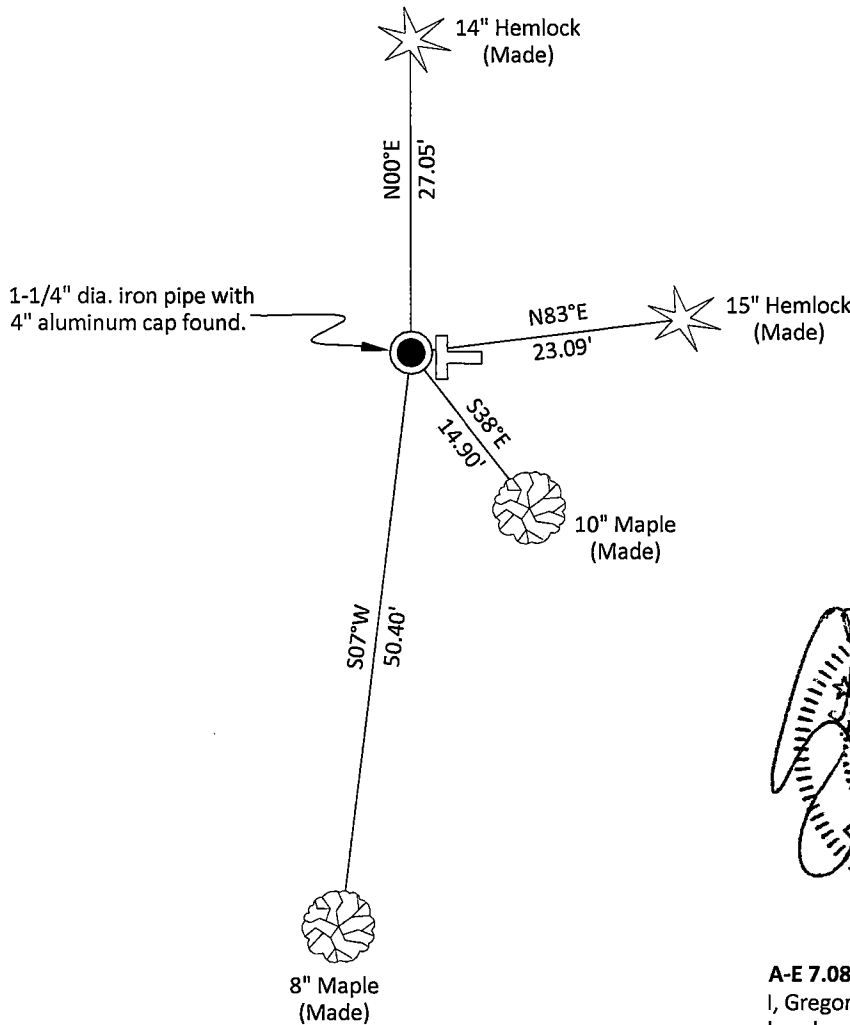
A-E 7.08(3)(b)(e)(f)(g) Describe any record evidence, monument evidence, occupational evidence, testimonial evidence or any other material evidence considered. Describe any discrepancy between the corner restored and any previously established location. State whether the corners was restored through acceptance of obliterated evidence, a found perpetuated location, or determined by proportionate methods.

02/11/1963 Certified Land Corner Restoration by Neal Sperhake, indicates he set a 1" dia. iron pipe with a Kimberly Clark Corp aluminum cap from original bearing tree. (See corner form for prior history and additional information).

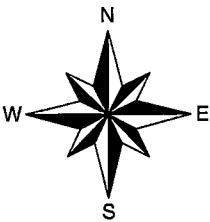
06/05/2015 Timothy J. Rusch Forest County Survey File # 341303-20150605 found iron pipe.

03/28/2025 I found and accepted a 1-1/4" dia. iron pipe with a Kimberly Clark Corp 4" dia. aluminum cap stamped to identify the corner 6" above the swamp at the with a 2" dia. iron pipe alongside the corner. I found remains of both Sperhake's Birch bearing trees which are now dead. I made four new bearing trees to witness the corner as shown below.

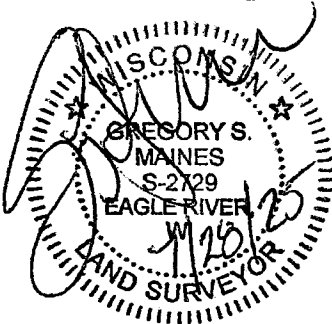
A-E 7.08(3)(c)(d)(e)(h) Plan view of corner with ties to at least four witnesses. If in disagreement with previously established corner, show the distances between the two corners and also indicate the tie to the disputed corner. Distances and directions to other PLSS used as evidence or for proportioning.



Bearings given to the nearest second are Forest County Grid all other bearings are magnetic



- * Vinyl "T" post 0.5' east of corner.
- * Distances to bearing trees are to nail in side with BT tag on tree.
- * Sketch is not to scale



A-E 7.08(3)(i) - Certification
I, Gregory S. Maines, Professional Land Surveyor No. 2729, hereby certify that the corner location on this record was referenced by me or under my direction and control and that this U.S. Public Land Survey Monument Record is complete to the best of my knowledge and belief.

4351334 0020

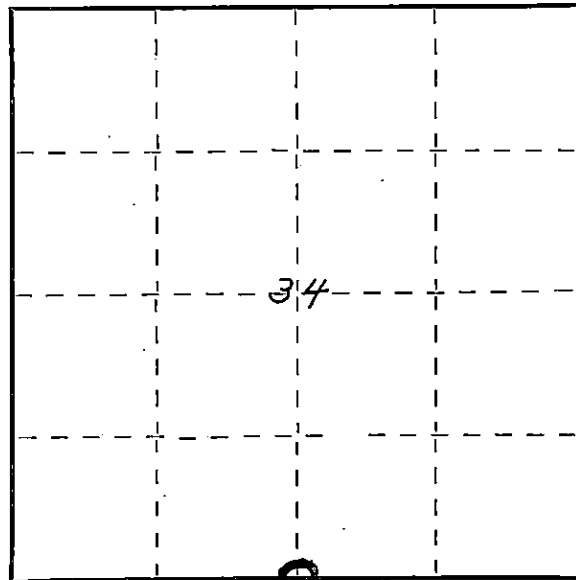
State of Wisconsin }
County of FOREST } ss.

I NEAL SPERHAKE, do hereby
certify that on the FIFTEENTH day
of NOVEMBER, 1961, I found
evidence of the SOUTH QUARTER SECTION
corner of SECTION 34
Township 35, North, Range
13 EAST, Fourth Principal Meridian,
as described hereon; and that from this evidence
I established a new monument and accessories
as described hereon to perpetuate the original
location of this corner.

Resident witnesses:

Richard Piontek - Waubesa

David Pichotta - Waubesa



○ = Corner monument restored.

CERTIFIED LAND CORNER RESTORATION

Index No. 116

215

History of original corner establishment:

This corner can also be described as: THE QUARTER SECTION CORNER BETWEEN SECTION 3,
T34N-R13E, AND SECTION 34, T35N-R13E, 4TH P. M.

This corner was established during the original survey of this township, as noted
in the Original Field Notes for the Original Survey of T35N-R13E, 4th P.M.

Description of corner evidence found:

The original bearing tree, described in the original field notes as,

TAMARACK 12 N36W 25 links

is still present at this date, with a portion of the original scribe marks still visible.

Description of monument and accessories I established to perpetuate the original location of this corner.

At the site of this original post, as determined from the existing original bearing
tree noted above, I emplaced a "GALVANIZED IRON PIPE, THREE FEET LONG, ONE INCH IN
DIAMETER, WITH AN ALUMINUM CAP DENOTED AS, 'KIMBERLY-CLARK CORP T34-35N
1/4 BTWN 3 & 34 R13E SPERHAKE RLS 463 11-15-61".

The pipe is witnessed by:

W. Birch 8 N 1W 21 links. (Scribed S34 NBT).

W. Birch 12 S 7E 27 links. (Scribed S 3 NBT).

Dated at Crandon, Wis., this 11 day of Feb, 1963

Signature [Signature] Title Registered Land Surveyor Registration No. S-463
(County Surveyor, Registered Land Surveyor, or other duly authorized official)

Office of Register of Deeds, County of Forest, I hereby certify that the within
instrument was filed in this office for record on the 11th day of Feb, 1963
at 10 o'clock A. M. 86845

Anna Peterson
(Register of Deeds)

SUBSCRIBED & SWORN TO BEFORE ME THIS
11TH DAY OF FEB 1963
Anna Peterson
Notary Public, Forest Co., Wis
Comm. exp. 10/31/65

By _____ Deputy

43513340020

Surveyor's Seal