

U.S. PUBLIC LAND SURVEY MONUMENT RECORD

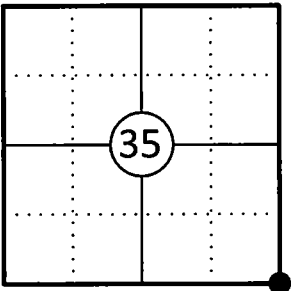
This form is intended and designed to fulfill all requirements of Wisconsin Administrative Code, Chapter A-E 7.08 U.S. Public Land Survey Monument Record (3) (a)(b)(c)(d)(e)(f)(g)(h)(i).

The coordinate value shown has been verified by at least one of the following methods: 1) Comparison to a previously GNSS determined published value; 2) The value is the average of two or more GNSS observations at a markedly different time; 3) One or more distances were measured back to the GNSS observed corner from temporary GNSS observed offset locations.

A-E 7.08(3)(a) Identity of the corner:

SE Corner Section 35	WISCRS - Forest County
Township 35 North	N: 532034.643 USFT
Range 13 East	E: 857131.627 USFT
Town of Lincoln	Datum: NAD 83 (2011)
County of Forest	GNSS Method: WISCRS VRS Direct Observation

Corner ID: 43513350000



Original Corner Information:

Original Surveyor: Alfred Millard	Original B.T.'s: Y Birch 12 N50°E 39 links
Date of Survey: August 1857	Fir 12 N19°W 42 links
	Hemlock 12 S64°W 20 links
	Y Birch 12 S75°E 48 links

A-E 7.08(3)(b)(e)(f)(g) Describe any record evidence, monument evidence, occupational evidence, testimonial evidence or any other material evidence considered. Describe any discrepancy between the corner restored and any previously established location. State whether the corners was restored through acceptance of obliterated evidence, a found perpetuated location, or determined by proportionate methods.

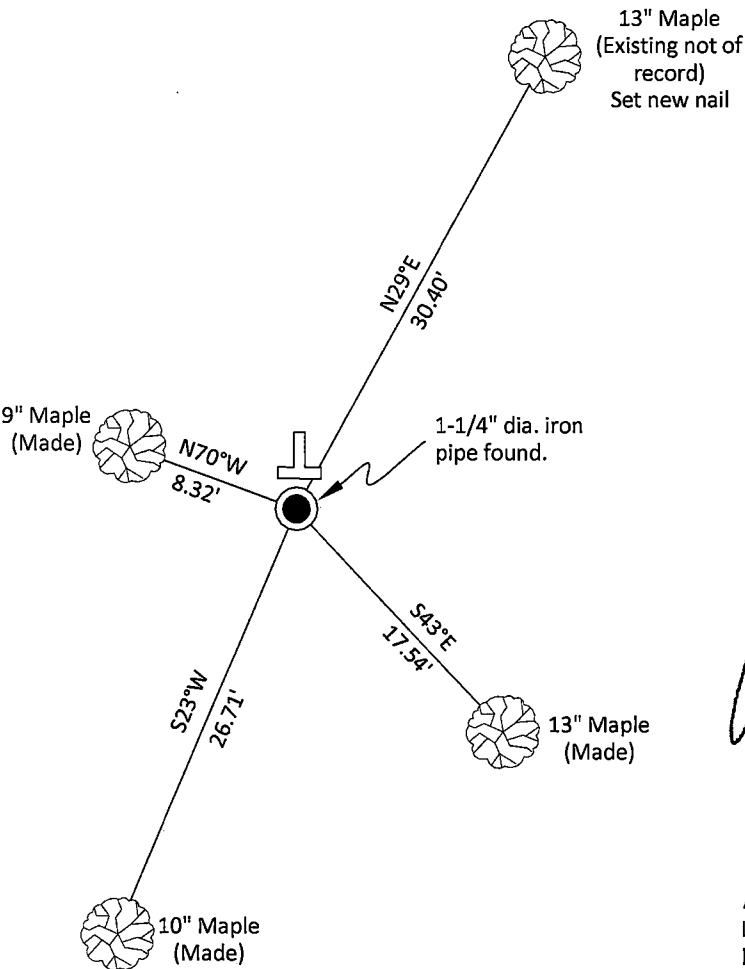
12/11/1962 Certified Land Corner Restoration by Neal Sperhake indicates he set a 1" dia. iron pipe with a Kimberly Clark Corp aluminum cap by proportionate measurement. (See corner form for prior history and additional information).

10/25/2013 Timothy J. Rusch, Forest Co Survey File # 341335-20131025 found aluminum capped monument.

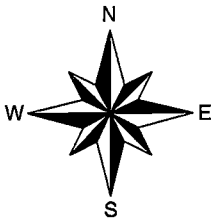
06/22/2015 Kevin P. Bixby, Forest Co Surveyor File # 351336-20150622 indicates existing 1" iron pipe.

03/10/2025 I found and accepted a 1-1/4" dia. iron pipe with no cap at the corner location and one existing bearing tree not of record. The top of the pipe is damaged a little which may explain why there is not a cap on the iron pipe. We checked the distances to the east and west along the town line and they fit pretty well with what Rusch and Bixby had. I made three additional bearing trees to witness the corner as shown below.

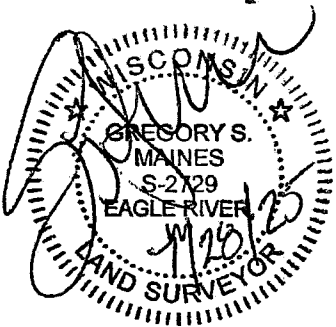
A-E 7.08(3)(c)(d)(e)(h) Plan view of corner with ties to at least four witnesses. If in disagreement with previously established corner, show the distances between the two corners and also indicate the tie to the disputed corner. Distances and directions to other PLSS used as evidence or for proportioning.



Bearings given to the nearest second are Forest County Grid all other bearings are magnetic



- \* Vinyl "T" post 0.85' north of corner.
- \* Distances to bearing trees are to nail in side with BT tag on tree.
- \* Sketch is not to scale



A-E 7.08(3)(i) - Certification  
I, Gregory S. Maines, Professional Land Surveyor No. 2729, hereby certify that the corner location on this record was referenced by me or under my direction and control and that this U.S. Public Land Survey Monument Record is complete to the best of my knowledge and belief.

43513350000

86989

## RESTORATION OF LOST ORIGINAL GOVERNMENT SURVEY CORNER

Index No.

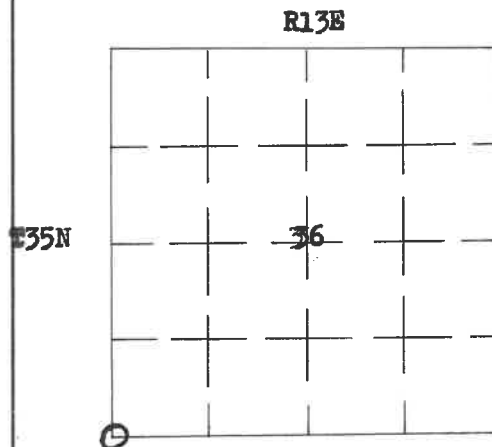
130

Z21

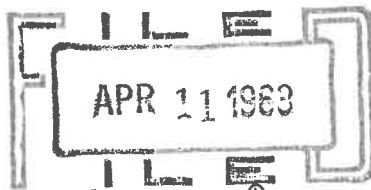
## STATE OF WISCONSIN

I NEAL SPERHAKE, do hereby certify that on the ELEVENTH day of DECEMBER, 1962, I restored the SOUTHWEST SECTION CORNER of SECTION 36, TOWNSHIP 35 NORTH, RANGE 13 EAST, Fourth Principal Meridian, as described hereon.

Resident Witnesses:

Richard Piontek - Waubesa.

O = Corner monument restored

REGISTER'S OFFICE  
FOREST COUNTY, WIS.

At 2 o'clock P  
Karl O. Unger Register of Deeds  
Dep.

This corner can also be described as: THE SECTION CORNER COMMON TO SECTIONS 1 AND 2, T34N-R13E, AND, 35 AND 36, T35N-R13E, 4TH P.M.

## History of original corner establishment:

This corner was established during the original survey of this township, as noted in the Original Field Notes for the Original Survey of T35N-R13E, 4th p.m.

## Description of monument and accessories I established to perpetuate the location of this corner:

At the point determined for the location of the corner I emplaced a:

"GALVANIZED IRON PIPE, THREE FEET LONG, ONE INCH IN DIAMETER, WITH ALUMINUM CAP DENOTED AS: 'KIMBERLY-CLARK CORP T34-35N 35, 36, 1, 2, R13E SPERHAKE RLS 463 12-11-62".

The pipe is witnessed by:

Hemlock 12 N68°E 35 links. (Scribed S36 NBT).  
Aspen 7 S32°E 18 links. (Scribed S 1 NBT).  
W. Birch 7 S23°W 70 links. (Scribed S 2 NBT).  
B. Cherry 4 N76°W 53½ links. (Scribed S35 NBT).

## Description as to how corner was located:

No evidence of original corner present. Thus, set by proportionate measurement. To the east the 1/4 corner between 1 and 36 has been previously established. To the west, the corner common to 34, 35, 2, 3, has been previously established. The distance between the corners is 120.04 chains. Thus, set the corner of 35, 36, 1, 2, 40.01 chains east of the 1/4 between 36 and 1, on a straight line between the known corners.

Dated at Crandon, Wis., this 11th day of April, 1963

Signature Neal Sperhake Title Registered Land Surveyor Registration No. S-463

Office of Registrar of Deeds, County of Forest, I hereby certify that the within

instrument was ~~filed on this office for record~~ signed and sworn to on the 11th day of April, 1963

at Crandon Wisconsin

Adeline de Noble  
Notary (Registrar of Deeds) Public  
Forest County, Wisconsin My Commission Expires February 6, 1966

Surveyor's Seal

43513350000