

U.S. PUBLIC LAND SURVEY MONUMENT RECORD

This form is intended and designed to fulfill all requirements of Wisconsin Administrative Code, Chapter A-E 7.08 U.S. Public Land Survey Monument Record (3) (a)(b)(c)(d)(e)(f)(g)(h)(i).

The coordinate value shown has been verified by at least one of the following methods: 1) Comparison to a previously GNSS determined published value; 2) The value is the average of two or more GNSS observations at a markedly different time; 3) One or more distances were measured back to the GNSS observed corner from temporary GNSS observed offset locations.

A-E 7.08(3)(a) Identity of the corner:

S 1/4 Corner Section 35

Township 35 North

Range 13 East

Town of Lincoln

County of Forest

WISCRS - Forest County

N: 532033.115 USFT

E: 854495.602 USFT

Datum: NAD 83 (2011)

GNSS Method: WISCORS VRS Direct Observation

Original Corner Information:

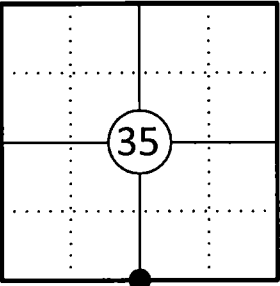
Original Surveyor: Alfred Millard

Date of Survey: August 1857

Original B.T.'s: Tamarack 10 N58°W 11 links

Tamarack 11 S22E 12 links

Corner ID: 43513350020



A-E 7.08(3)(b)(e)(f)(g) Describe any record evidence, monument evidence, occupational evidence, testimonial evidence or any other material evidence considered. Describe any discrepancy between the corner restored and any previously established location. State whether the corners was restored through acceptance of obliterated evidence, a found perpetuated location, or determined by proportionate methods.

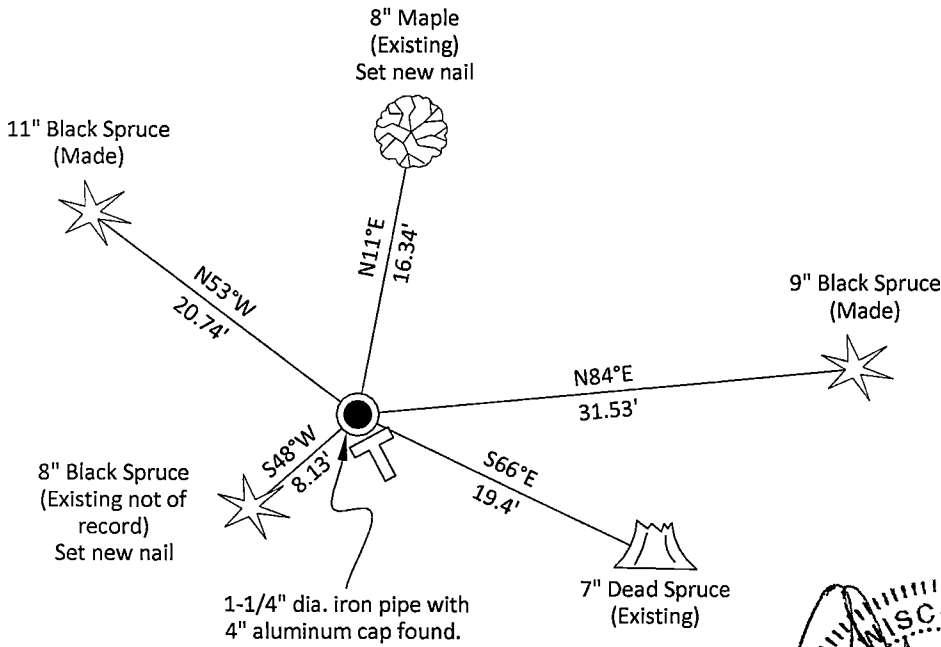
04/11/1963 Certified Land Corner Restoration by Neal Sperhake, indicates he set a 1" dia. iron pipe with a Kimberly Clark Corp aluminum cap by proportionate measurement. (See corner form for prior history and additional information).

10/25/2013 Timothy J. Rusch, Forest County Survey File # 341335-20131025 found aluminum capped monument.

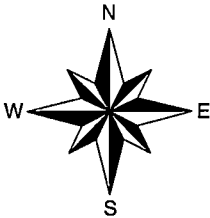
06/05/2015 Timothy J. Rusch Forest County Survey File # 341303-20150605 found aluminum capped monument.

03/28/2025 I found and accepted a 1-1/4" dia. iron pipe with a Kimberly Clark Corp 4" dia. aluminum cap stamped to identify the corner 4" above grade and three existing bearing trees, one not of record and one being dead and still standing. Sperhake's Ash bearing tree is actually a Maple. I made two additional bearing trees to witness the corner as shown below.

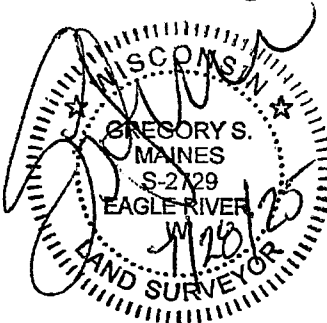
A-E 7.08(3)(c)(d)(e)(h) Plan view of corner with ties to at least four witnesses. If in disagreement with previously established corner, show the distances between the two corners and also indicate the tie to the disputed corner. Distances and directions to other PLSS used as evidence or for proportioning.



Bearings given to the nearest second are Forest County Grid all other bearings are magnetic



- \* Vinyl "T" post 0.9' southeast of corner.
- \* Distances to bearing trees are to nail in side with BT tag on tree.
- \* Sketch is not to scale



A-E 7.08(3)(i) - Certification  
I, Gregory S. Maines, Professional Land Surveyor No. 2729, hereby certify that the corner location on this record was referenced by me or under my direction and control and that this U.S. Public Land Survey Monument Record is complete to the best of my knowledge and belief.

Index No.: 2/9

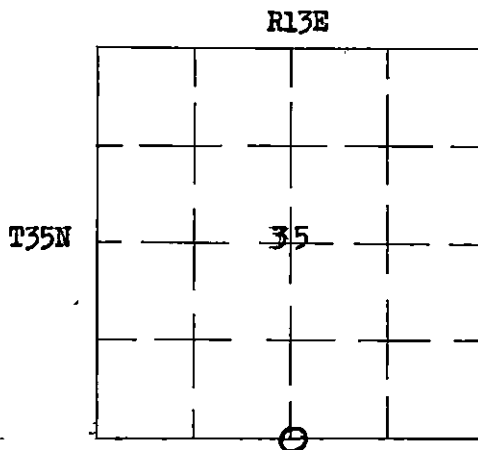
43513350020

86982

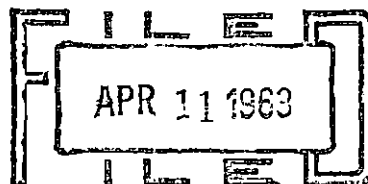
STATE OF WISCONSIN

I NEAL SPERHAKE, do hereby certify that on the TWELFTH day of DECEMBER, 1962, I restored the SOUTH QUARTER SECTION CORNER of SECTION 35, TOWNSHIP 35 NORTH, RANGE 13 EAST, Fourth Principal Meridian, as described hereon.

Resident Witnesses:

Richard Piontek - Waubesa.

○ = Corner monument restored

REGISTER'S OFFICE  
FOREST COUNTY, WIS.

At 2 o'clock P.M.  
Karl A. Huger Register of Deeds  
Sgt.

RESTORATION OF LOST ORIGINAL GOVERNMENT SURVEY CORNER

Index No. 123  
Z19

This corner can also be described as: THE QUARTER SECTION CORNER BETWEEN SECTIONS 2, T34N-R13E, AND, 35, T35N-R13E, 4TH P.M.

History of original corner establishment:

This corner was established during the original survey of this township, as noted in the Original Field Notes for the Original Survey of T35N-R13E, 4th P.M.

Description of monument and accessories I established to perpetuate the location of this corner:

At the point determined for the location of the corner I emplaced a:

"GALVANIZED IRON PIPE, THREE FEET LONG, ONE INCH IN DIAMETER, WITH AN ALUMINUM CAP DENOTED AS, 'KIMBERLY-CLARK CORP T34-35N 1/4 BTWN 2 & 35 R13E SPERHAKE RLS 463 12-12-62".

The pipe is witnessed by:

B. Ash 5 N 6°W 25 links. (Scribed S35 NBT).  
Spruce 5 S66°E 29 links. (Scribed S 2 NBT).

Description as to how corner was located:

No evidence of original corner present. Thus, set by proportionate measurement between the previously established section corners one half mile east and west, respectively. The distance between the corners is 80.03 chains. Therefore, the 1/4 corner was set 40.01½ chains from either section corner, on a straight line between them.

Dated at Crandon, Wis., this 11th day of April, 19 63Signature Neal Sperhake Title Registered Land Surveyor Registration No. S-463Office of Register of Deeds, County of Forest, I hereby certify that the within

signed and sworn to instrument was filed in this office on the 11th day of April, 19 63

SEC DEEDS FILE

Adeline DeNoble  
(Register of Deeds) Public  
Notary  
Forest County Wisconsin  
My commission expires February 6, 1966

My Commission Expires  
February 6, 1966

Surveyor's Seal

43513350020