

CORTNEY BRITTEN CLEEREMAN  
REGISTER OF DEEDS  
FOREST COUNTY WI  
PAGES: 1

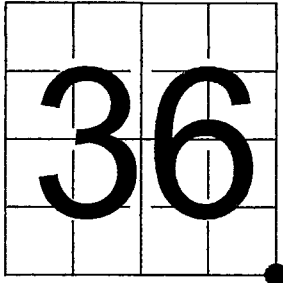
INDEX#: Z25

U. S. PUBLIC LAND SURVEY MONUMENT RECORD

NOTE: This form is intended and designed to fulfill all requirements of Wisconsin Administrative Code, Chapter A-E 7.08 U.S. Public Land Survey Monument Record (3) (a-i)

A-E 7.08(3)(a) Identity of corner:  
Southeast Corner Section 36,  
Township 35 North, Range 13 East  
of the Fourth Principal Meridian,  
Town of Lincoln, Forest County,  
Wisconsin

WISCRS - FOREST COUNTY  
N: 532,045.227 USft (XXX,XXX.XXX)  
E: 862,406.156 USft (XXX,XXX.XXX)  
Datum: NAD83 (2011)  
GNSS Method RTK  
GNSS Control WISCRS VRS



The coordinate value shown has been verified by the average of two or more GPS observations at a markedly different time. Coordinates shown in parenthesis are previously published values.

A-E 7.08(3)(b)

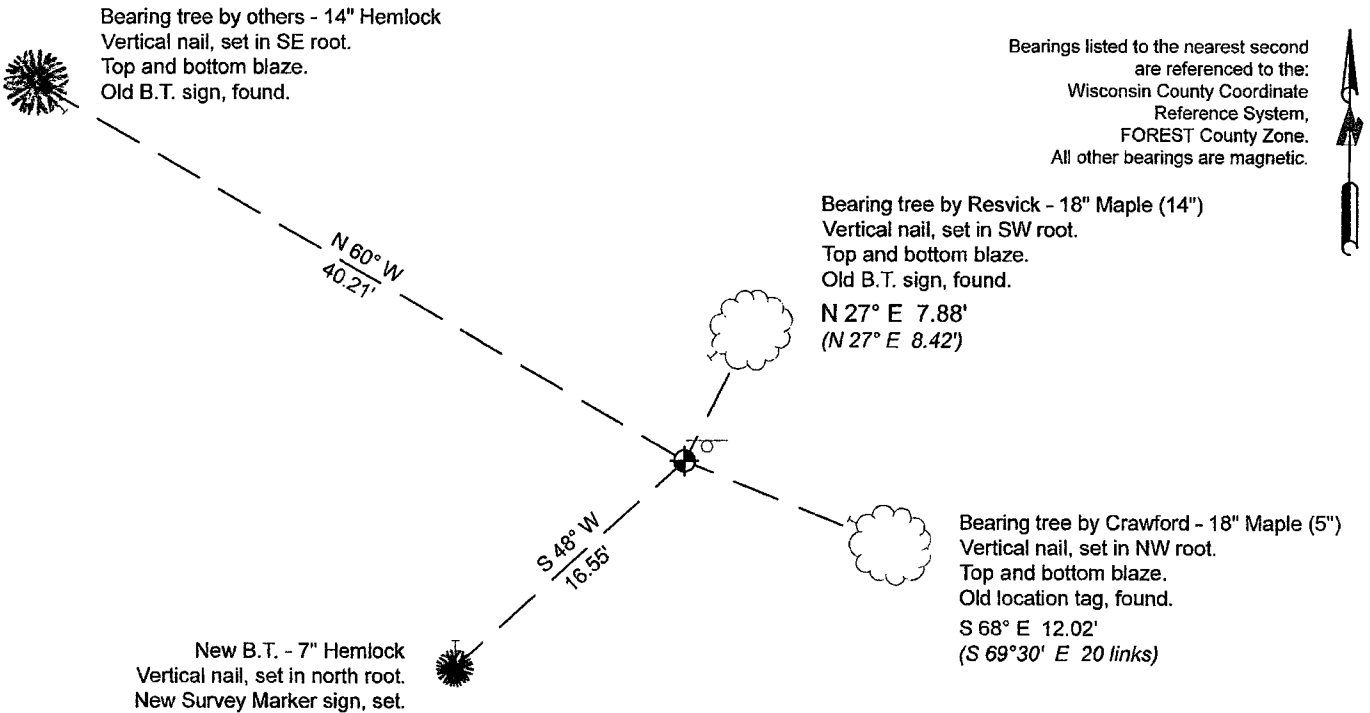
Original Surveyor: Alfred Millard, August 1857  
Hemlock 10 - N 35° E, 42 Links, Hemlock 24 - N 53° W, 17 Links, Hemlock 18 - S 18° W, 60 Links, Hemlock 11 - S 72° E, 45 Links

See previous Certified Land Corner Restoration - Z 1- March 2, 1978 - Surveyor 802 - Jean F. Resvick - THENCE:

October 19, 2010 - Surveyor 2820 - Casey J. Swanson - indicates this position as "U.S.F.S. Mon." on county record Map #351336-20101019.

April 12, 2024 - I found a 6" diameter concrete monument with a 2.5" diameter brass cap stamped to identify the corner. I also found: 1 of Crawford's bearing trees, 1 of Resvick's bearing trees, and 1 bearing tree of unknown origin. The monument extends ±6" above grade, and is ±240' north of a forest road that runs east-west direction.  
I established 1 new reference monuments as shown below.

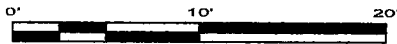
A-E 7.08(3)(c)(d) Plan view of corner with references to at least 4 witness monuments.



LEGEND

Monument sizes = outside diameter measurements.

- This Corner
- Steel sign post, found ±1.3 feet NE of corner



A-E 7.08(3)(e) 1857 Surveyor set a post, 1978 Surveyor found a 6" diameter concrete monument with a brass cap stamped to identify the corner, 2010 Surveyor found similar, I found the same in 2024.

A-E 7.08(3)(f) I accept this monument in good faith as a FOUND PERPETUATED LOCATION of the corner.  
A-E 7.08(3)(g)(h) This corner was determined through lost-corner-proportionate methods.

A-E 7.08(3)(i) I, Jeffrey L. DeMuth, Professional Land Surveyor No. S-2656, hereby certify that the corner location on this record was determined by me or under my direction and control, and that this U.S. Public Land Survey Monument Record is correct and complete to the best of my knowledge, and belief.

SIGNATURE \_\_\_\_\_ DATE April 17, 2024



43513360000

Z25

# CERTIFIED LAND CORNER RESTORATION

State of Wisconsin

County of Forest

ss.

I, Jean F. Resvick, do hereby certify that on the 6th day of February, 1978, I found evidence of the Southwest Section corner of Section 31 Township 35 North, Range 14 East, Fourth Principal Meridian, as described hereon; and that from this evidence I established a new monument and accessories as described hereon to perpetuate the original location of this corner:

Description of original monument and accessories and subsequent restorations:

Surveyed in 1857 by Alfred Millard. Set post

Hemlock 10, N35E, 42 links

Hemlock 24, N53W, 17 links

Hemlock 18, S18W, 60 links

Hemlock 11, S72E, 45 links

Dependent resurvey in 1946 by Hugh B. Crawford

Set concrete monument, 24 inches long, 6 inches

diameter, 14 inches in the ground and in mound

on stone, with brass cap marked:

T35N, R13E, R14E, S36, S31, S1, S6, T34N, 1946

Birch 16, N51E, 35 links

Maple 5, S69°30'E, 20 links

Hemlock 5, S43W, 19 1/2 links

Birch 10, N52W, 82 links

Description of corner evidence found:

Monument as described

Birch 16, scribed, dead snag

Maple 13, scribed

Hemlock, scribed, dead and down

Birch, scribed, dead snag

Description of monument and accessories I established to perpetuate the location of this corner:

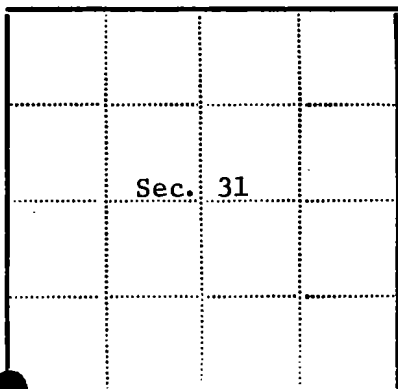
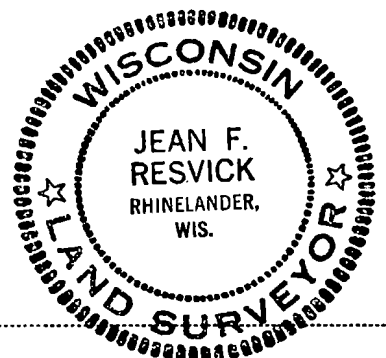
Blazed and scribed the following new bearing trees:

Maple 14, N27E, 8.42 feet

Maple 10, S6W, 13.29 feet

Hemlock 10, N73W, 41.52 feet

Set steel sign post 1.5 feet northeast of monument



● - Corner monument restored

□ -

Resident witnesses

Dated at Rhinelander Wisconsin, this 2 day of March 1978.

Signature Jean F. Resvick Title Land Surveyor  
(County Surveyor, Registered Land Surveyor, or other duly authorized official)

Surveyors Registration No. S-802 DOCUMENT NUMBER 113631

Office of Register of Deeds County of Forest

I hereby certify that the within instrument was filed in this office for record on the 20th day of April 1978, and was filed in Book No. Page No. of County Records.

Signature Eugene Stategoy Title Register of Deeds

Township 35 North, Range 14 East, Section 31, Index No. Z-1, Page No.

43513360000

21