

245863

FILED ON:  
06/06/2025 03:37 PM  
CORTNEY BRITTEN CLEEREMAN  
REGISTER OF DEEDS  
FOREST COUNTY WI  
PAGES: 1

FOREST COUNTY U.S. PUBLIC LAND  
SURVEY MONUMENT LOCATION RECORD

☒ LANDMARK

☐ BENCHMARK

FOUND ☒

SET ☐

RESET ☒

RE-TIED ☒

CORNER IDENTITY: BERNTSEN SNM-1 STEEL NAIL MARKER

FOREST COUNTY COORDINATE: N: 558188.942  
E: 894195.767

ELEVATION-(FEET): \_\_\_\_\_ DATUM: NAD83 (2011)

WEATHER: SUNNY

DATE OF SURVEY: 8/9/2021 TEMPERATURE: 80 °F

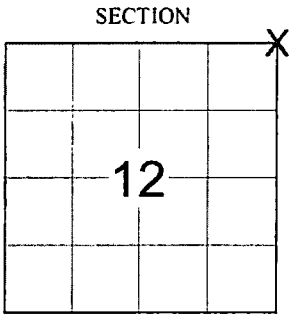
SURVEY PARTY: CHRISTOPHER FIERI & COLLIN MARQUARDT

SECTION 12

TOWNSHIP 35 N

RANGE 14 E

LAONA  
CITY, VILLAGE, TOWN



LOCATION  
(Indicated By X)

E-25

NO.

BASIS FOR MONUMENT LOCATION:

(DESCRIBE METHOD OF SURVEY AND CORNER AUTHENTICATION)

SEARCHED FOR THE NORTHEAST CORNER OF SECTION 12 AND FOUND ALL FOUR OF THE WITNESS MONUMENTS AND A RAILROAD SPIKE AT THE CORNER LOCATION AS SHOWN ON THE RECORD TIE SHEET DATED 7/10/1985. ALSO FOUND A BRASS CAPPED 2" IRON PIPE FROM 1965 STAMPED 114.0' TO CORNER. SET A BERNTSEN SNM-1 STEEL NAIL MARKER AT THE CORNER LOCATION UPON THE COMPLETION OF THE STATE HIGHWAY "32" RESURFACING PROJECT AND PERPETUATED THE CORNER LOCATION AS SHOWN BELOW.



CERTIFIED CORRECT:

Keith J. Walkowski  
KEITH J. WALKOWSKI S-2717

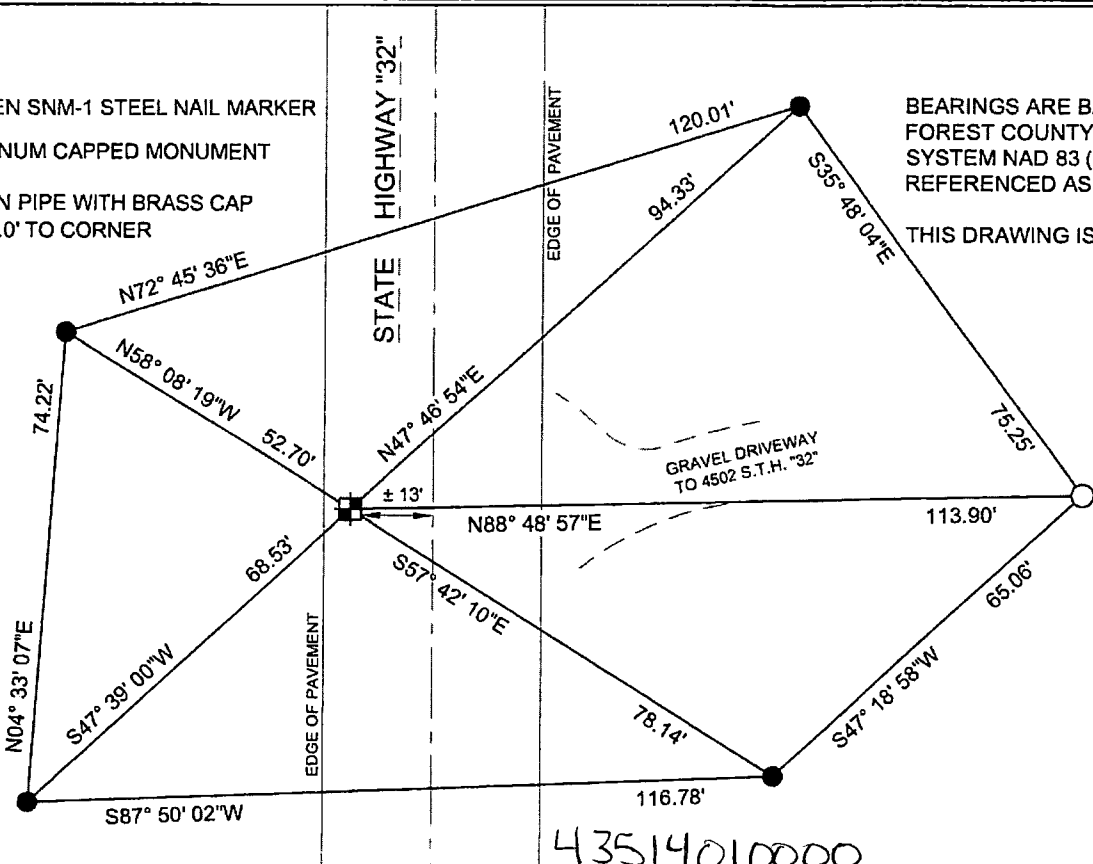
Registered Land Surveyor

DATE: OCTOBER 18TH, 2021

COMPANY RIVERSIDE LAND SURVEYING LLC

TIE SKETCH:

- ☒ - SET BERNTSEN SNM-1 STEEL NAIL MARKER
- - FOUND ALUMINUM CAPPED MONUMENT
- - FOUND 2" IRON PIPE WITH BRASS CAP STAMPED 114.0' TO CORNER



E-25

NO.

138169

## U. S. PUBLIC LAND SURVEY MONUMENT RECORD

INSTRUCTIONS: This record shall show the location of the corner and shall include all of the following nine elements (a through i).

- (a) Identify the corner by reference to the U.S. public land survey system.

● = Corner monument restored.

Section Corner to Sections 1, 12, 6 & 7,  
T35N, R14 - 15E, 4th P.M.

## REGISTER'S OFFICE

Forest County, WI

Received for record this 6<sup>th</sup> day

of September A.D., 1989

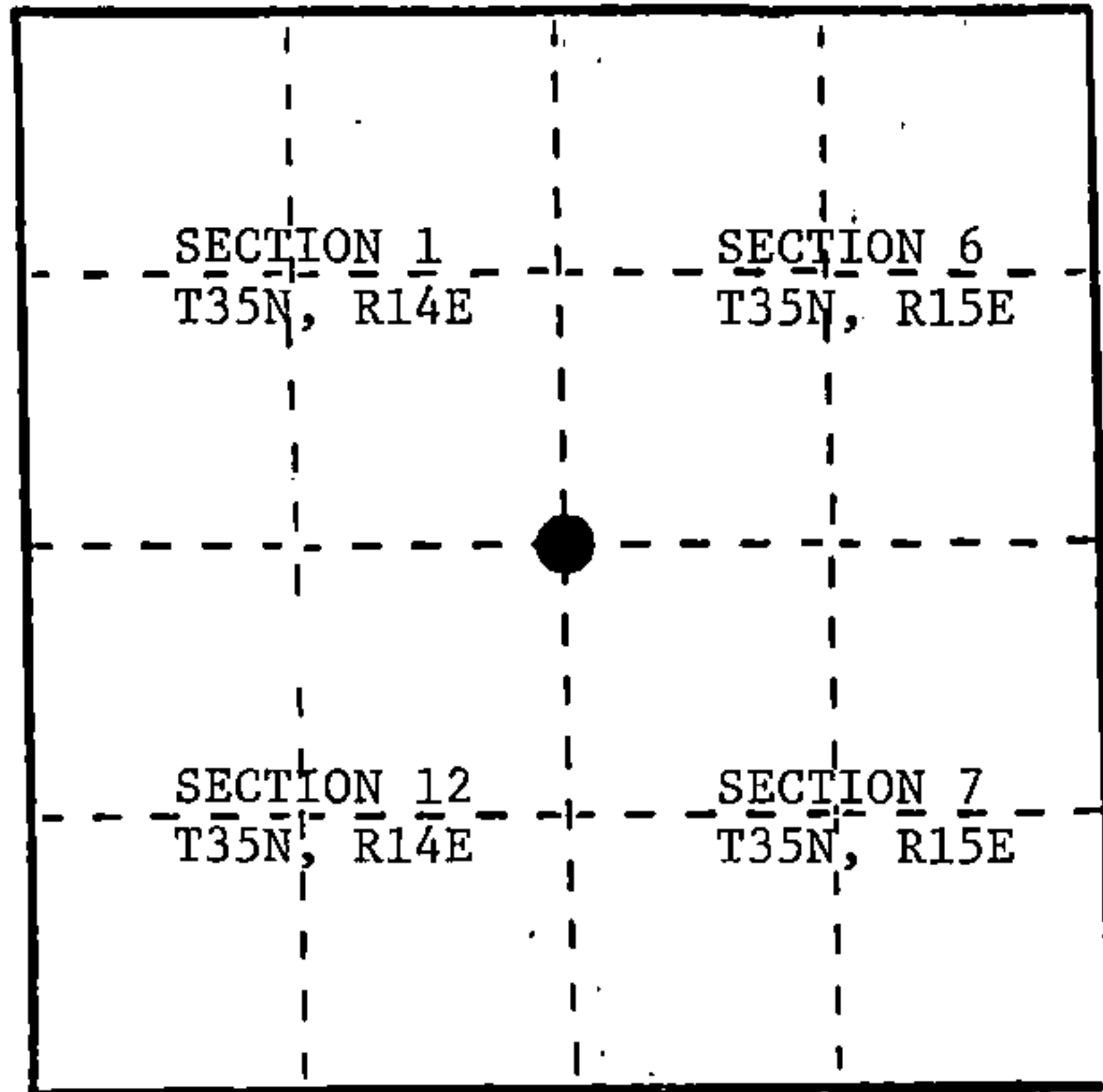
at 10:25 o'clock A.M. and

recorded in Vol. CORNER RESTORATION of records

on page E-1

Paul Achenbrenner

REGISTER



- (b) Describe any record evidence, monument evidence, occupational evidence, testimonial evidence or any other material evidence you considered, and whether the monument was found or placed.

In 1857, Artemas Curtis established this corner. All evidence being destroyed in the construction and reconstruction of State Highway #32 over the years, the last time in 1985.

In 1965 Forest Service surveyor Jean Resvick restored this corner in the centerline of the highway and fence line easterly. A reference monument was placed 114.00 feet easterly of the corner. This reference monument is in place.

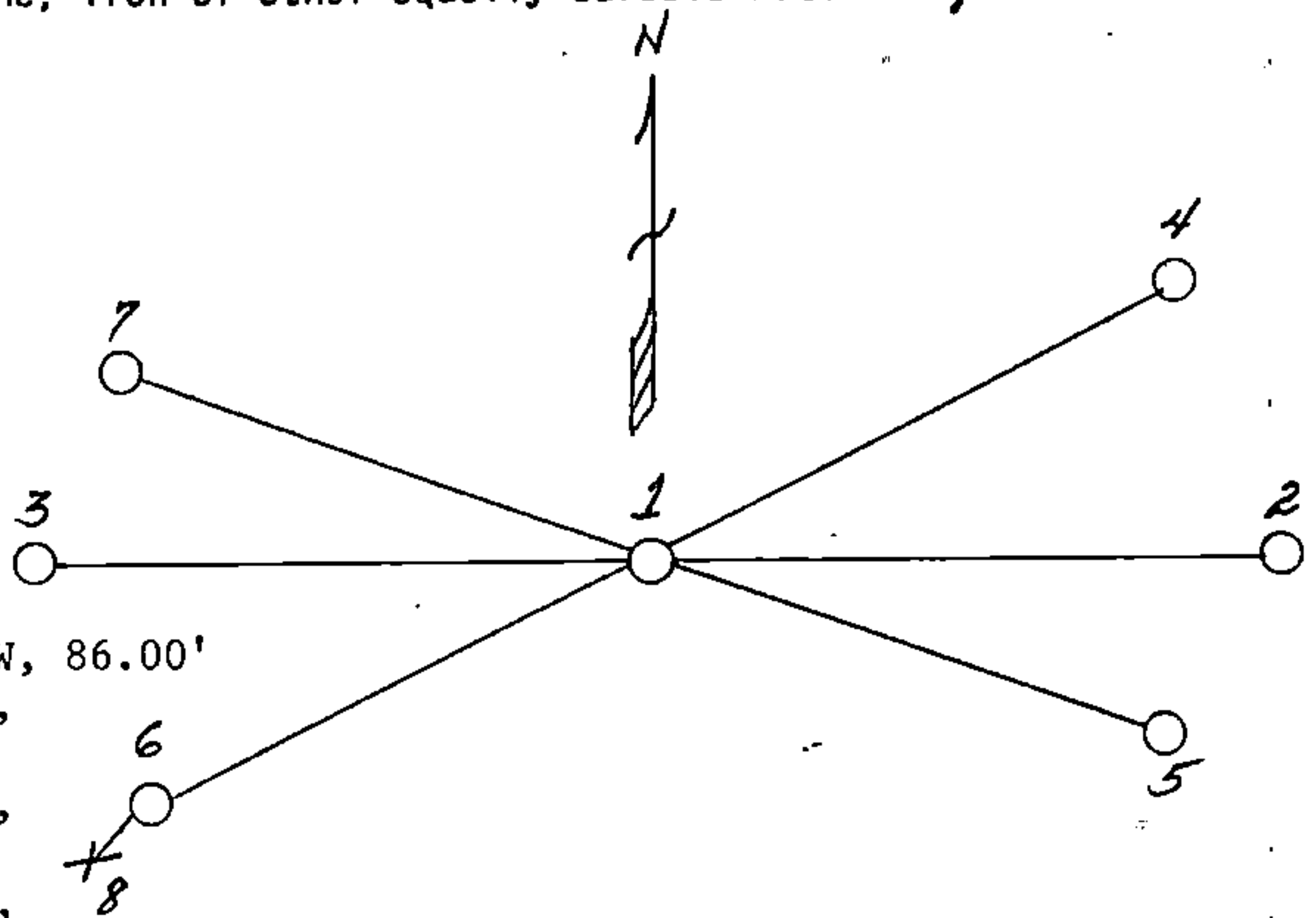
In 1980 Forest Service surveyor William Cochrane found the Resvick corner and used it to subdivide Sections 1 and 12 of Range 14 East. He placed a reference monument N88°-32.6'W, 86.00 feet of the corner.

On 7/10/85 DOT filed with the County Clerk a "Preservation of Landmarks" form on this corner whereby 4 additional W.C. monuments were established. OVER (g&h)

- (c) In the plan view drawing below, provide reference ties to at least 4 witness monuments, or, if the location is within a municipality, to at least 2 witness monuments. (Witness monuments shall be made of concrete, natural stone, iron or other equally durable material.) Describe witness monuments.

- (d) Show a plan view drawing depicting the relevant monuments and reference ties which is sufficient in detail to enable accurate relocation of the corner monument if the corner monument is disturbed. Indicate north.

- 1) Railroad spike
- 2) Forest Service brass tablet on 2" x 60" iron pipe, east 114.00'
- 3) Forest Service brass tablet on 2" x 60" iron pipe, N88°-32.6'W, 86.00'
- 4) DOT Berntsen aluminum monument, W.C. #1, N46°-44'E, 94.38'
- 5) DOT Berntsen aluminum monument, W.C. #2, S58°-52'E, 78.08'
- 6) DOT Berntsen aluminum monument, W.C. #3, S46°-44'W, 68.29'
- 7) DOT Berntsen aluminum monument, W.C. #4, N58°-52'W, 52.74'
- 8) Steel sign post, SW of DOT W.C. #3, .68'



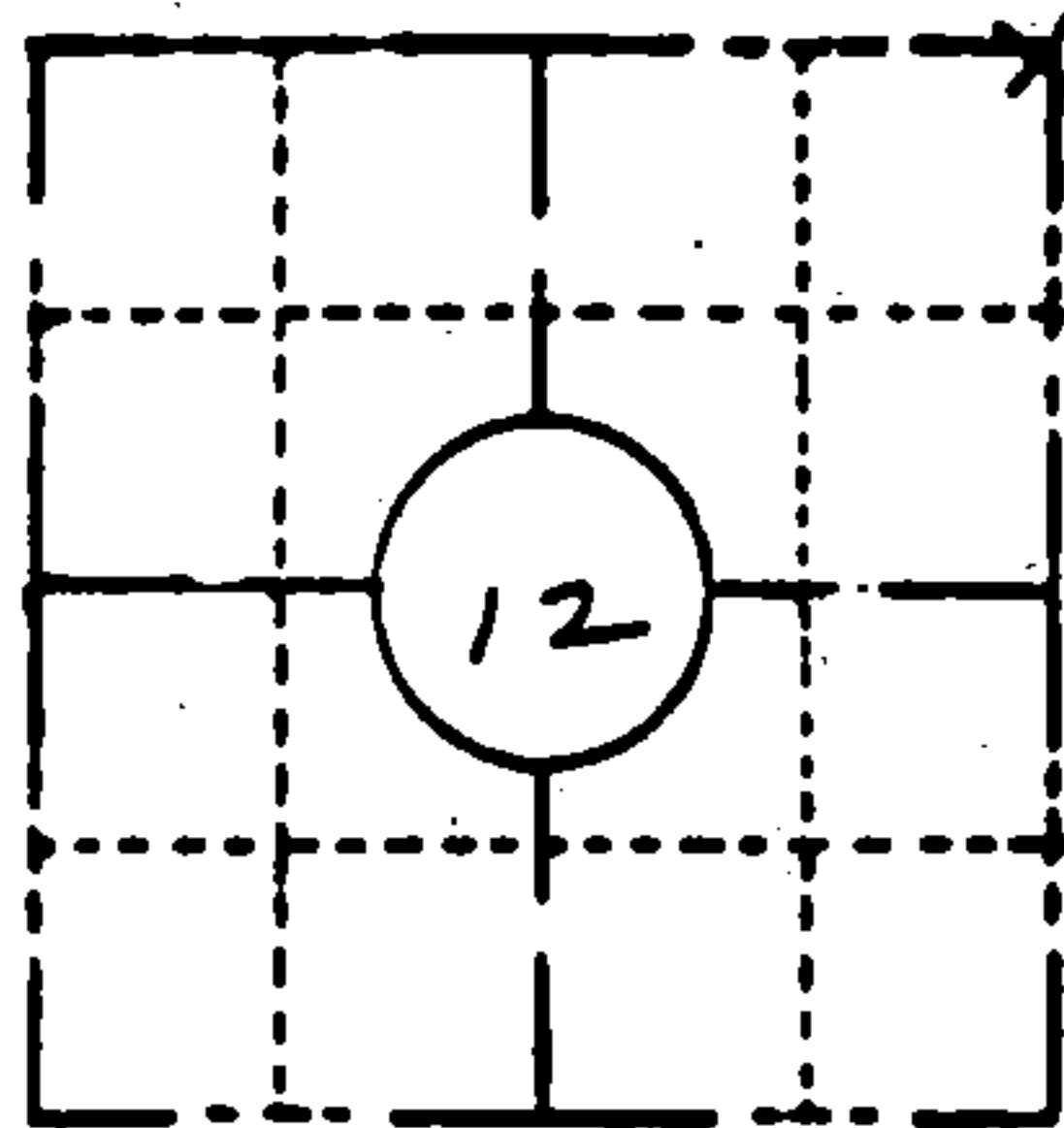


ORIGINAL ON FILE IN CO CLERK'S OFFICE  
COPY HERE FOR REFERENCE

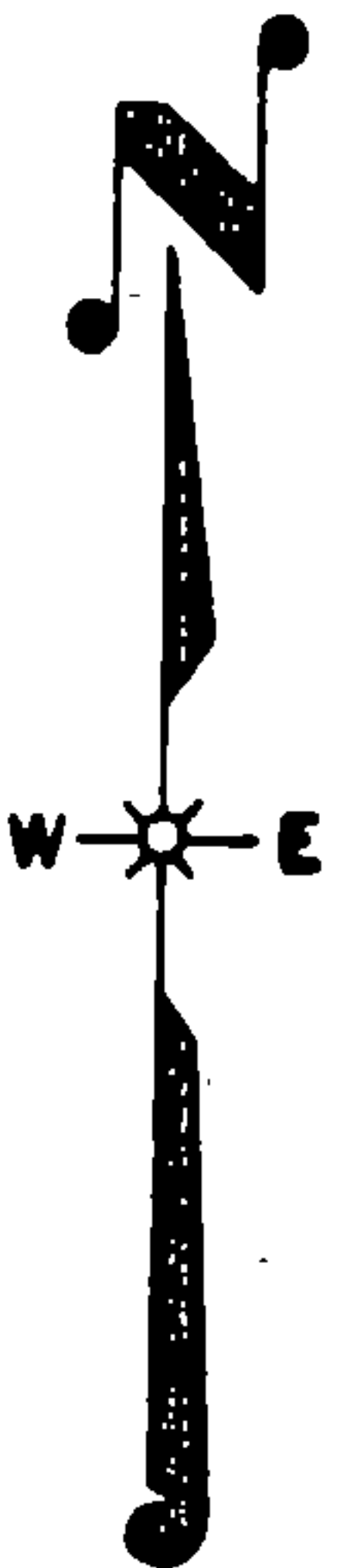
FIELD SURVEY NOTES  
PRESERVATION OF LANDMARKS  
(Pursuant to Section 59.635(7) Wisconsin Statutes  
E-D-707-89

State of Wisconsin / Department of Transportation

COUNTY FOREST		
TOWN LAONA		
HIGHWAY STH 32		
SECTION 12	TOWNSHIP T 35 N	RANGE R 14 E
TYPE OF LANDMARK 2" IP WITH BOLT IN CENTER SET BY U.S.F.S.		

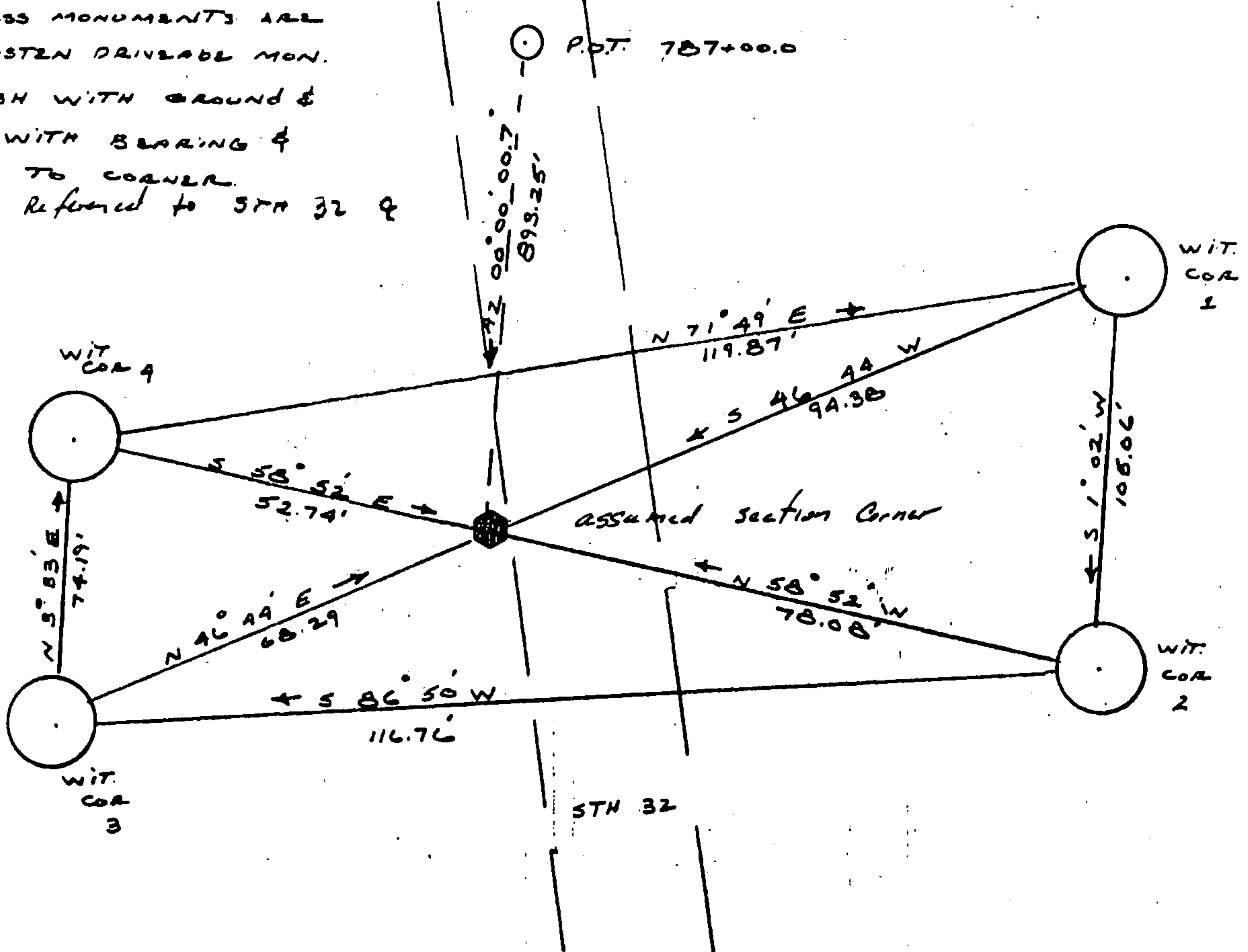


LOCATION SKETCH  
(Location of landmark indicated by "x")



This space for copy of field notes or ties to the above described landmarks

ALL WITNESS MONUMENTS ARE  
D.O.T. BERNSTEIN DRIVEABLE MON.  
SET FLUSH WITH GROUND &  
STAMPED WITH BEARING &  
DISTANCE TO CORNER.  
Brgs are referred to STH 32 &



FILED UNDER PROJECT 9131-03-70			COUNTY CLERK'S OFFICE COUNTY OF Forest WISCONSIN } SS	
DISTRICT OFFICE NUMBER 03-07	CITY RHINELANDER	COUNTY ONEIDA	DATE RECEIVED FOR RECORD 7-10-85	DATE COPY SENT TO COUNTY SURVEYOR N/A
LOCATED OR ESTABLISHED BY NAME ROBERT B. JOHNSON			SIGNATURE OF COUNTY CLERK Dora C. James	
TITLE SURVEY CREW CHIEF DATE 5-14-85 Under the direct supervision of MICHAEL HESS 500829				

PRESERVATION OF LANDMARKS

PAGE \_\_\_\_\_

4351401 0000

E-25