

245865

FILED ON:

06/06/2025 03:37 PM

CORTNEY BRITTEN CLEEREMAN  
REGISTER OF DEEDS

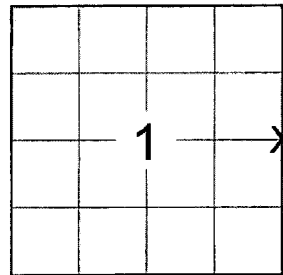
FOREST COUNTY WI

PAGES: 1

FOREST COUNTY U.S. PUBLIC LAND  
SURVEY MONUMENT LOCATION RECORD☒ LANDMARK☐ BENCHMARKFOUND ☐SET ☐RESET ☒RE-TIED ☒CORNER IDENTITY: BERNTSEN SNM-1 STEEL NAIL MARKERFOREST COUNTY COORDINATE: N: 560823.468E: 894208.926ELEVATION-(FEET): \_\_\_\_\_ DATUM: NAD83 (2011)WEATHER: PARTLY SUNNYDATE OF SURVEY: 10/27/2021 TEMPERATURE: 40 °FSURVEY PARTY: KEITH WALKOWSKISECTION 1  
TOWNSHIP 35 N  
RANGE 14 ELAONA

CITY, VILLAGE, TOWN

SECTION

LOCATION  
(Indicated By)

## BASIS FOR MONUMENT LOCATION:

(DESCRIBE METHOD OF SURVEY AND CORNER AUTHENTICATION)

SEARCHED FOR THE EAST 1/4 OF SECTION 1 ON THREE SEPARATE OCCASIONS AND COULD NOT FIND A CORNER MONUMENT OR ANY OF THE WITNESS TIES SHOWN ON THE 1985 TIESHEET BY JOHNSON. THE NORTH LINE OF THE SOUTHWEST 1/4 OF SECTION 6 WAS MONUMENTED ON A PLAT OF SURVEY BY TREML FROM 2009. I FOUND THREE OF THESE MONUMENTS AND BEST FIT A LINE AND EXTENDED THE LINE OUT 105.33 FEET AS SHOWN ON THE 2009 PLAT OF SURVEY TO ESTABLISH THE CORNER. THIS POSITION MATCHES WITHIN 0.33 FEET OF THE POSITION OF THE CORNER BY ALIGNING A 1995 SUBDIVISION OF SECTION 6 ONTO THE SOUTHWEST AND NORTHWEST CORNERS OF SECTION 6. I ALSO FOUND A LEANING 2" IRON PIPE WITH BRASS CAP STAMPED 109.00' FROM 1965 EAST OF THE CORNER, THE CORNER POSITION MATCHES THE STAMPED DISTANCE OF 109.00'. SET A BERNTSEN SNM-1 STEEL NAIL MARKER UPON COMPLETION OF THE STATE HIGHWAY "32" RESURFACING PROJECT. SET ADDITIONAL TIES TO PERPETUATE THE CORNER LOCATION AS SHOWN BELOW.

COMPANY RIVERSIDE LAND SURVEYING LLC

CERTIFIED CORRECT:

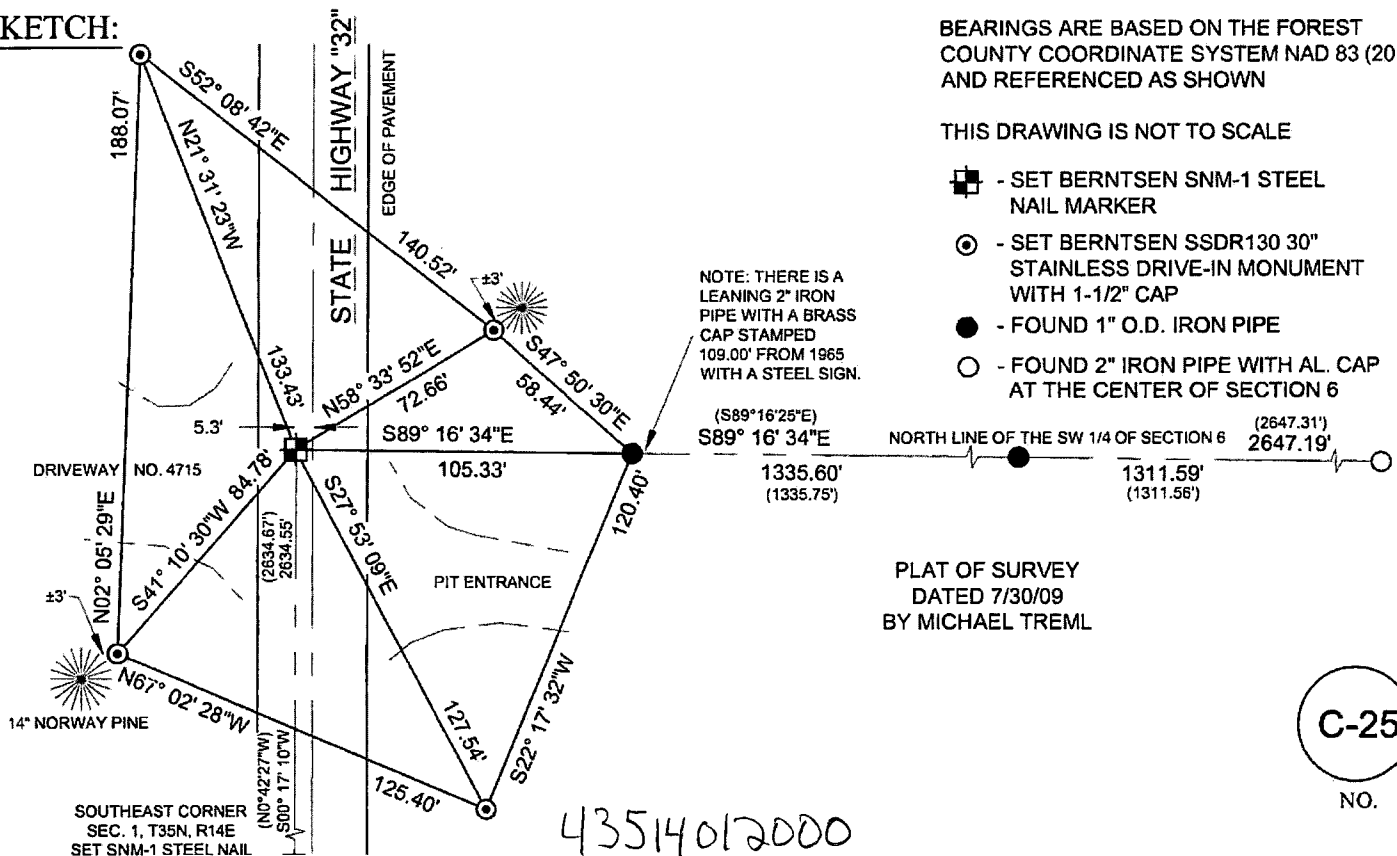
*Keith J. Walkowski*

KEITH WALKOWSKI S-2717

Registered Land Surveyor

DATE: NOVEMBER 7TH, 2021

## TIE SKETCH:

BEARINGS ARE BASED ON THE FOREST  
COUNTY COORDINATE SYSTEM NAD 83 (2011)  
AND REFERENCED AS SHOWN

THIS DRAWING IS NOT TO SCALE

- ☒ - SET BERNTSEN SNM-1 STEEL NAIL MARKER
- ☒ - SET BERNTSEN SSDR130 30" STAINLESS DRIVE-IN MONUMENT WITH 1-1/2" CAP
- ☒ - FOUND 1" O.D. IRON PIPE
- ☐ - FOUND 2" IRON PIPE WITH AL. CAP AT THE CENTER OF SECTION 6

PLAT OF SURVEY  
DATED 7/30/09  
BY MICHAEL TREML

C-25

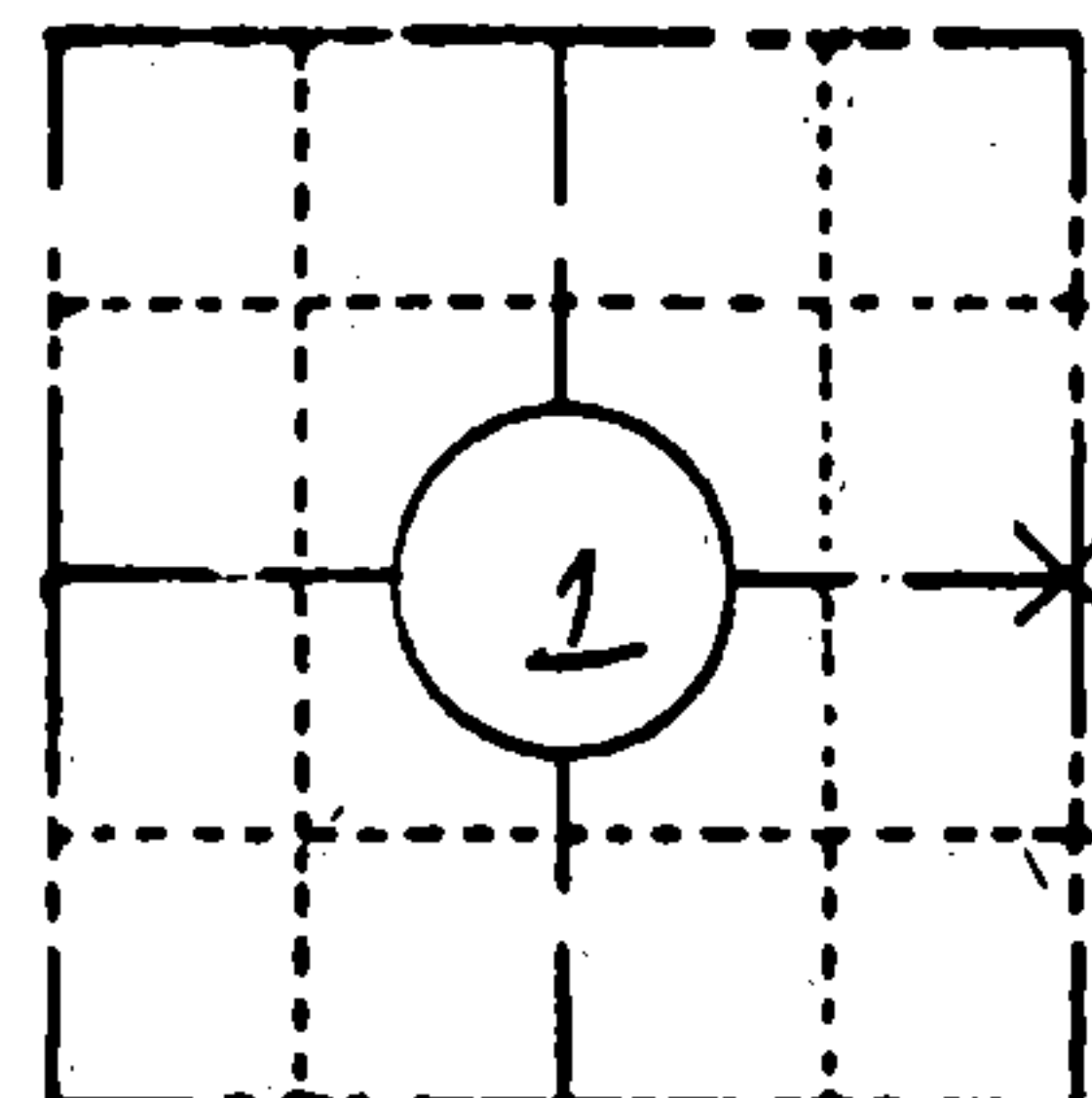
NO.

ORIGINAL ON FILE IN CO CLERK'S OFFICE  
COPY HERE FOR REFERENCE

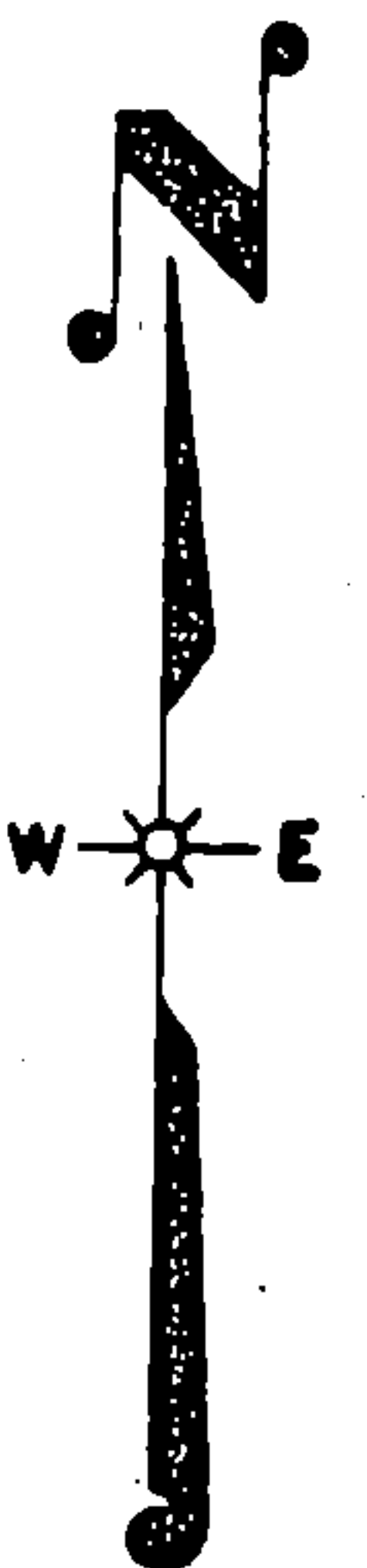
FIELD SURVEY NOTES  
PRESERVATION OF LANDMARKS  
(Pursuant to Section 59.635(7) Wisconsin Statutes  
E-D-707-69

State of Wisconsin / Department of Transportation

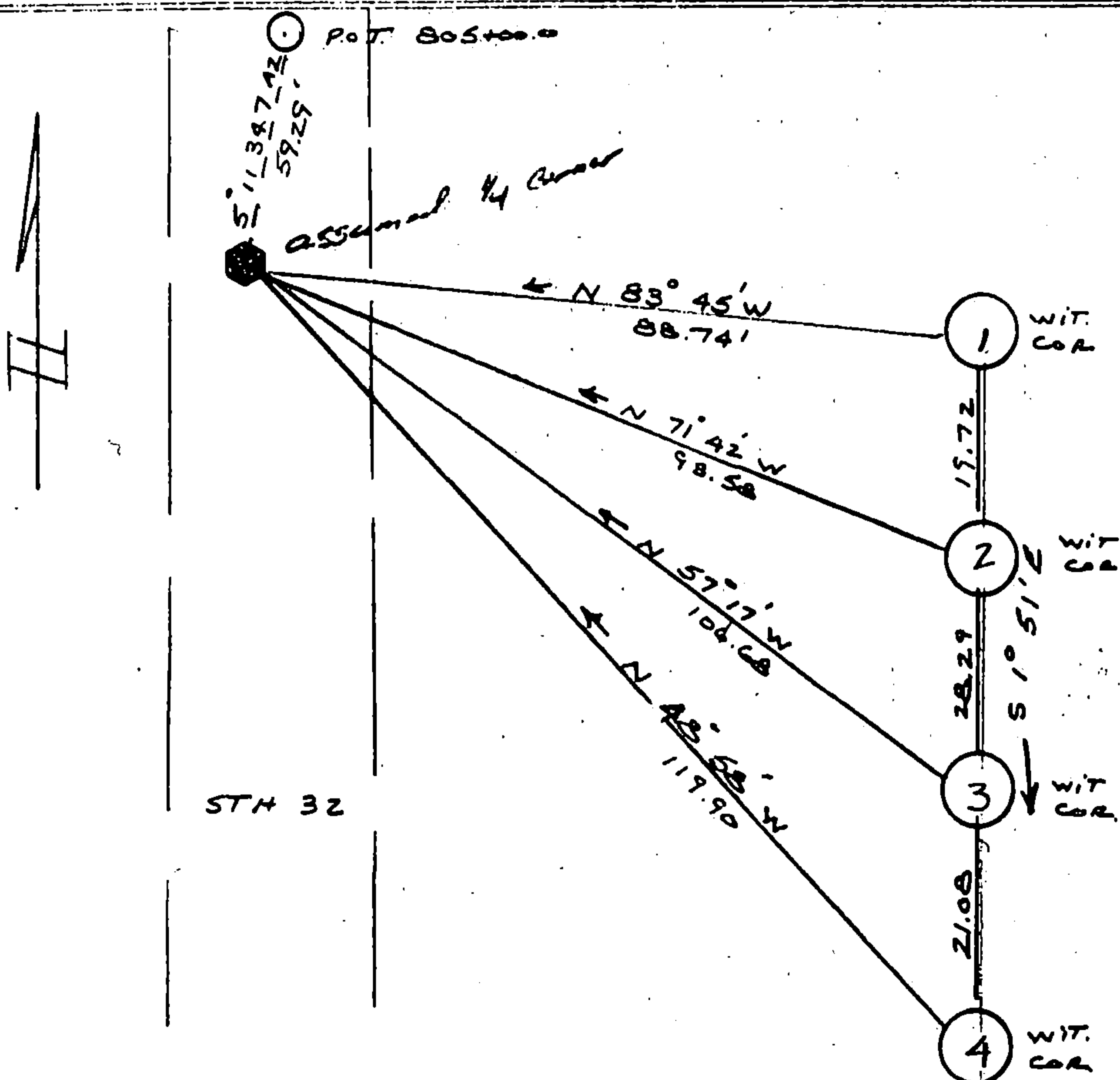
COUNTY <b>FOREST</b>		
TOWN <b>LAONA</b>		
HIGHWAY <b>STH 32</b>		
SECTION <b>SEC 1</b>	TOWNSHIP <b>T 35N</b>	RANGE <b>R 14 E</b>
TYPE OF LANDMARK <b>PK NAIL IN PAVT FROM USFS REF</b>		



LOCATION SKETCH  
(Location of landmark indicated by "x")



This space for copy of field notes or ties to the above described landmarks



ALL WITNESS CORNERS ARE  
D.O.T. BLANSTEN DRIVEABLE  
MONUMENTS SET FLUSH WITH  
GROUND & STAMPED WITH  
BEARING AND DISTANCE TO  
CORNER.  
Brgs are referenced to STH 32  
&

FILED UNDER PROJECT <b>9131-03-70</b>		
DISTRICT OFFICE NUMBER <b>03-07</b>	CITY <b>RHINELANDER</b>	COUNTY <b>ONEIDA</b>
LOCATED OR ESTABLISHED BY NAME <b>ROBERT B JOHNSON</b>		
TITLE <b>SURVEY CROWN CHIEF</b> DATE <b>5-21-85</b> <b>under the direct supervision of MICHAEL</b> <b>Hess 500809</b>		

COUNTY CLERK'S OFFICE COUNTY OF <b>Forest</b> WISCONSIN } 55	
DATE RECEIVED FOR RECORD <b>7-10-85</b>	DATE COPY SENT TO COUNTY SURVEYOR <b>N/A</b>
SIGNATURE OF COUNTY CLERK <b>Dora C. James</b>	

PRESERVATION OF LANDMARKS

PAGE

43514012000

C-25