

Document Number

173805

REGISTER'S OFFICE
Forest County, Wis.

Received for record this 11th day
of December A.D., 2001 at
9:10 o'clock A.M. and recorded
in Vol. CR Corner Restoration
page C-17

Kay Swanson, Deputy
Register of Deeds

U.S. PUBLIC LAND SURVEY MONUMENT RECORD

(As Required by WI Adm. Code)

History of original corner establishment and subsequent restorations and descriptions of any record, monument, occupational, testimonial or other evidence considered:

1859 — James McBride, set original corner post and made the following B.T.'s:

Aspen, 8", N 26° W, 27 lks., 17.82 feet.

Aspen, 8", N 62° E, 16 lks., 10.56 feet.

2001 — I found no evidence of the original corner. I found a railroad spike in line with West lane of N-S Road & 3' S. CL of E.-W Road. Railroad spike has been used by local surveyors as the quarter corner for surveys in the area. I accepted the railroad spike as the best available evidence for the corner location.

Corner was: (Check All That Apply)

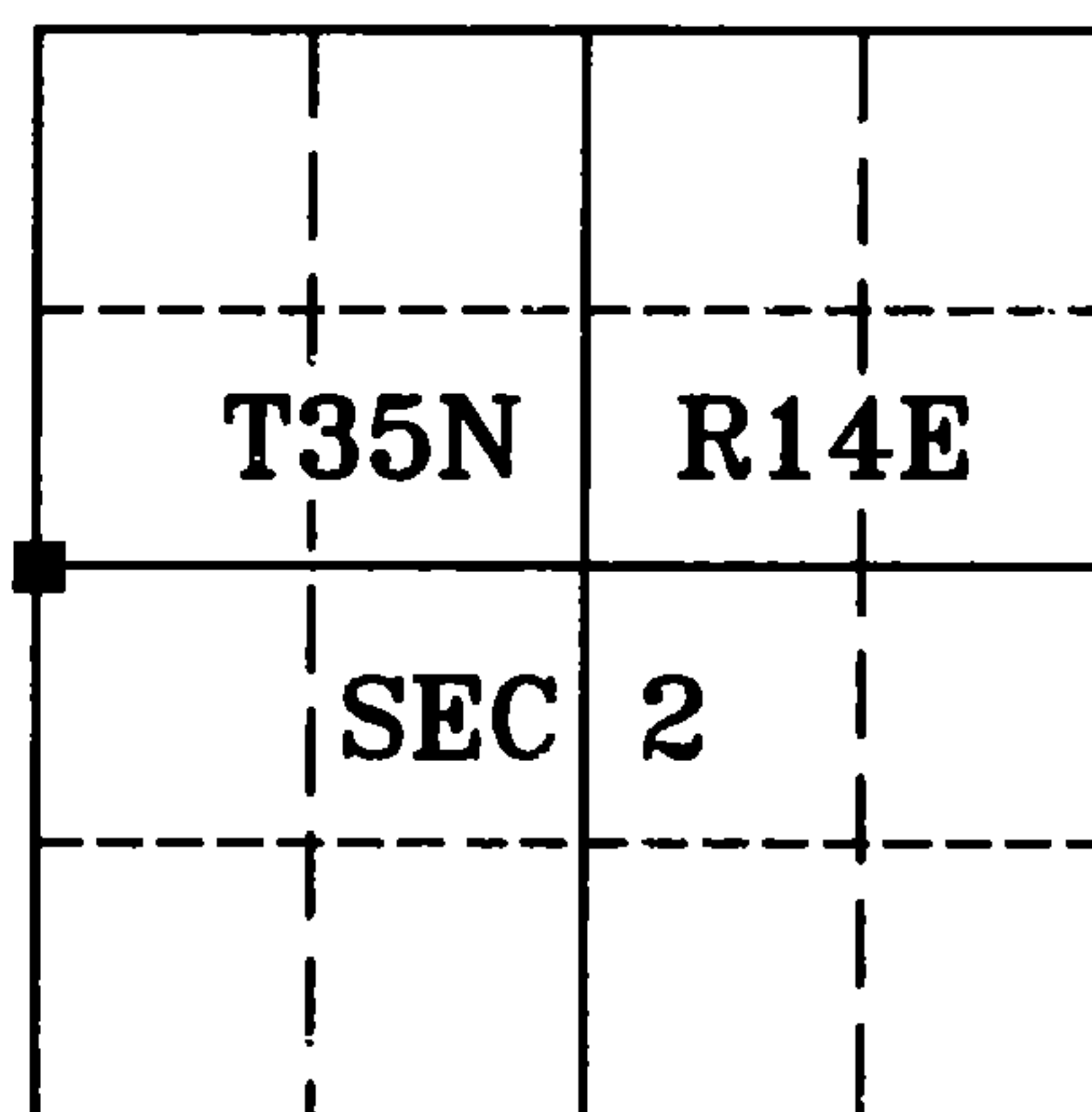
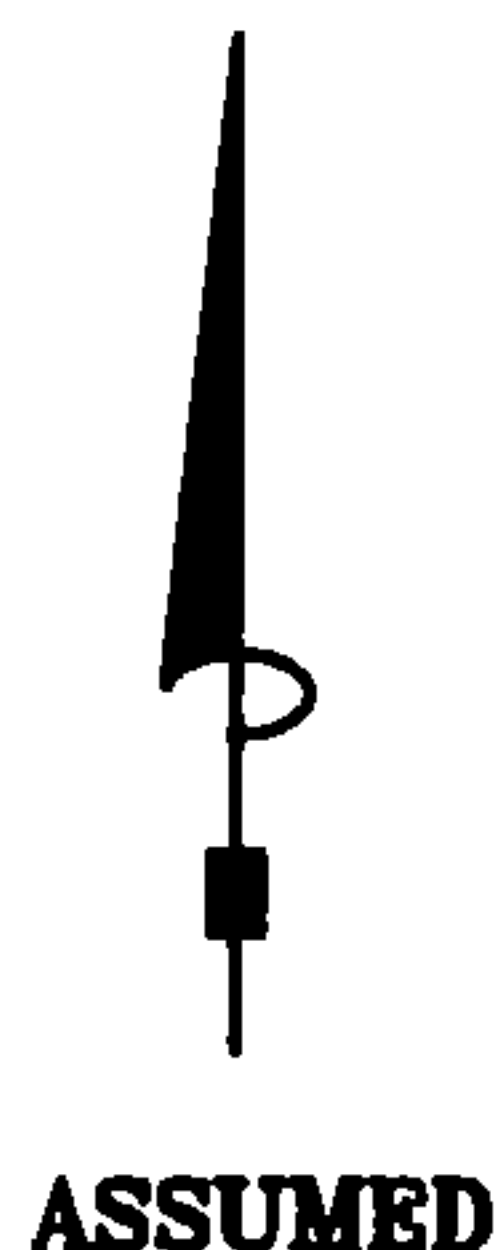
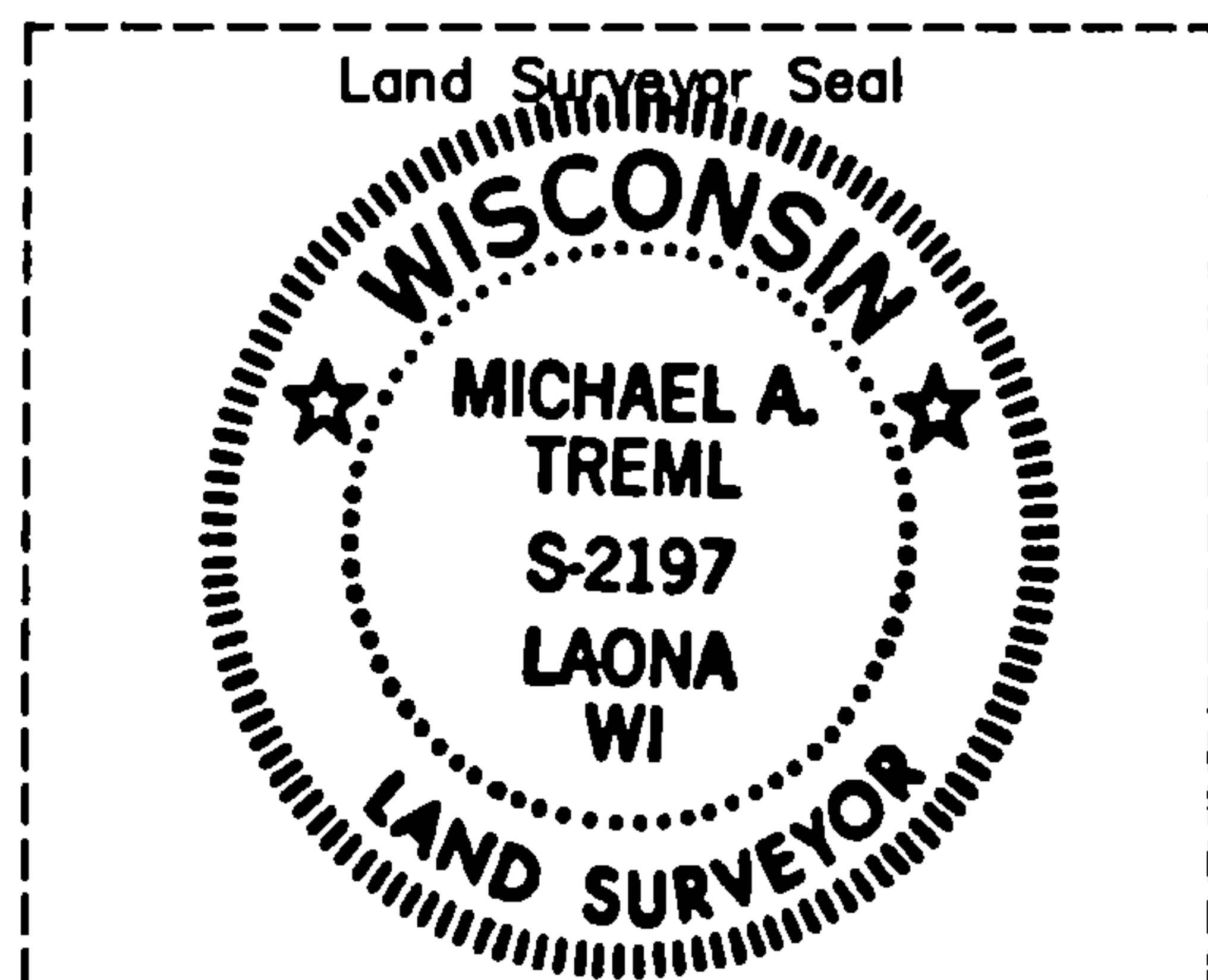
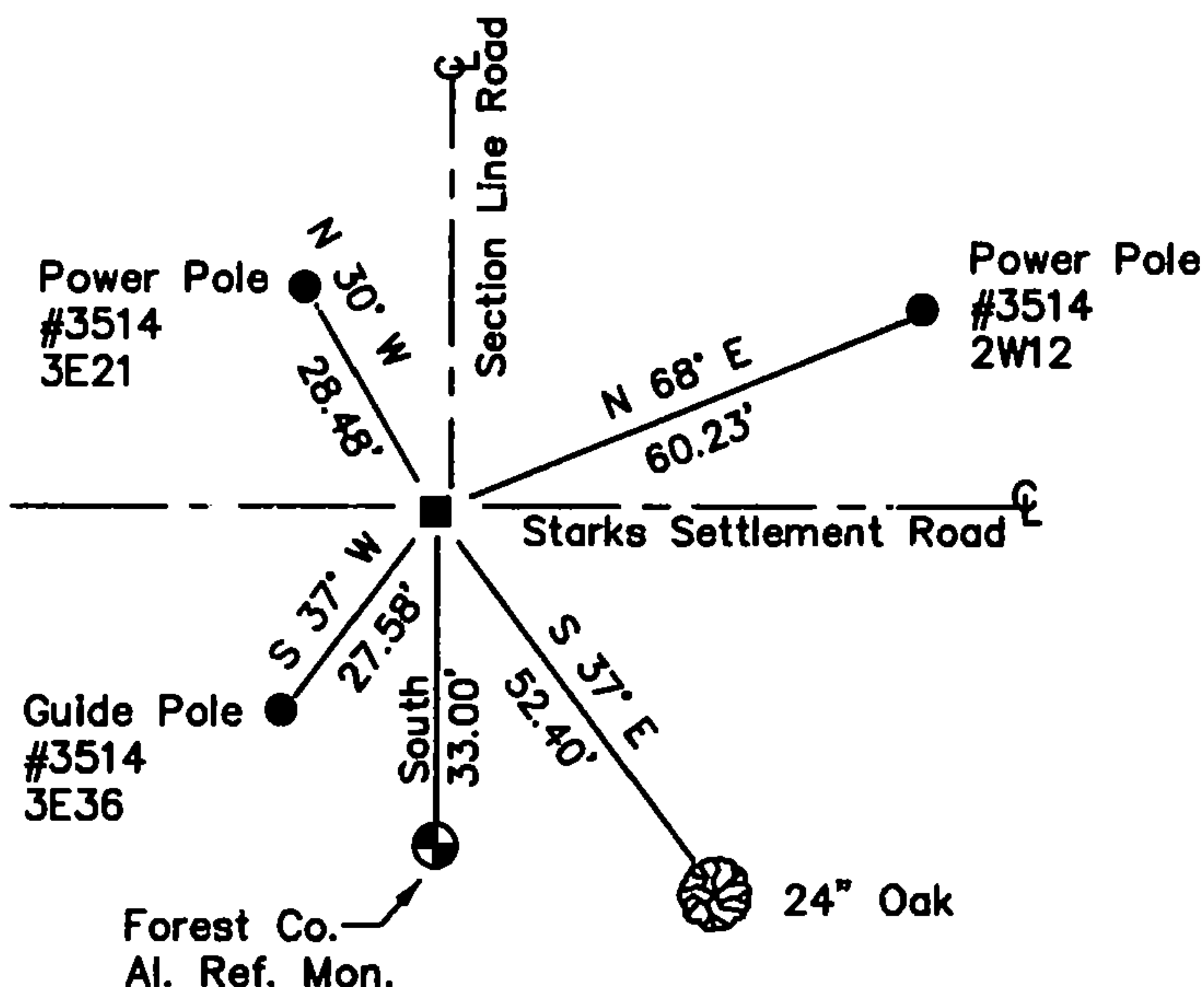
- ☐ Restored through acceptance of an obliterated evidence location.
☒ Restored through acceptance of a found perpetuated location.
☐ Considered a lost corner and reestablished through lost corner proportionate methods (include a plan view drawing showing distances and directions to other Public Land Survey Corners used for proportioning and determining the corner location).
☐ Restored or reestablished in a location that differs from a previous restoration or reestablishment (include a plan view drawing and indicate what was set and/or found).

Describe the monument and accessories used to perpetuate the location of this corner (include a plan view drawing and indicate what was set and/or found).

LEGEND:

- Found Railroad Spike
in Asphalt Road
- ⊕ Set Forest County
Aluminum Monument
Stamped for Reference Mon.

Note: All distances are
taken to nail in
side of tree and poles.



I, Michael A. Trembl, RLS
(type or print name) certify that the corner location shown on
this record was determined by me or under my direction and
control and that this U.S. Public Land Survey Monument Record
is correct and complete to the best of my knowledge and belief.

Michael A. Trembl 12-04-01
Signature Date

The West One-quarter corner of
Section 2 T. 35 N., R. 14 E.
Forest County, WI

Index No. C-17

43514032000



RS-7150-11 (9/1/66)

CERTIFIED LAND CORNER RESTORATION

JAN 8 1982

State of Wisconsin

County of Forest

ss.

Dora C. James

I William B. Cochrane, do hereby certify that on the 8th day of May, 1980, I found evidence of the West quarter corner of Section 2 Township 35 North, Range 14 East, Fourth Principal Meridian, as described hereon; and that from this evidence I established a new monument and accessories as described hereon to perpetuate the original location of this corner:

Description of original monument and accessories and subsequent restorations:

Surveyed in 1859 by James McBride.
South corrected between Sections 2 and 3, 34.50 chains set $\frac{1}{4}$ section post.
Aspen, 8 inches, N26W, 27 links
Aspen, 8 inches, N62E, 16 links.

Description of corner evidence found:

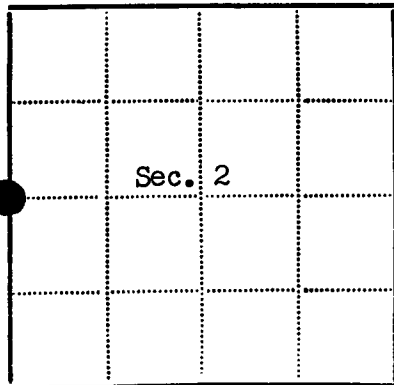
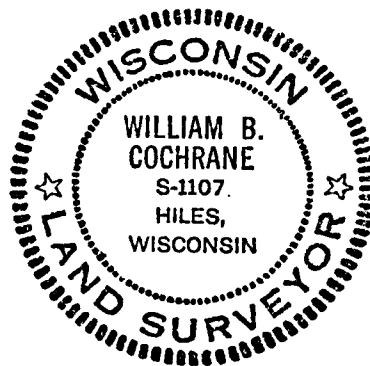
1 inch diameter iron pipe, 24 inches long buried about 12 inches below the surface of the road. The pipe was found at the intersection of an East-West town road and a gravel road North. An East-West fence line is South of the pipe 25 feet. The roads have been in place since at least 1939. I accept the pipe as the best available evidence of the corner.

Description of monument and accessories I established to perpetuate the location of this corner:

I replaced the iron pipe with a $2\frac{1}{2}$ inch diameter, aluminum monument, 30 inches long, with an aluminum cap stamped:
T35N, R14E, $\frac{1}{4}$, S2, S3, 1980, S-1107

Blazed and scribed the following new bearing trees:

Power Pole, N64E, 48.79 feet
Oak, 14 inches, S24E, 45.98 feet
Power Pole, # 3514-3R21, S54W, 36.30 feet
Power Pole, # 3514-3E21, N45W, 36.23 feet.



● - Corner monument restored
□ -

Resident witnesses.....

Dated at Laona Wisconsin, this 4th day of June 1980.

Signature William B. Cochrane Title Land Surveyor
(County Surveyor, Registered Land Surveyor, or other duly authorized official)

Surveyors Registration No. S-1107

Office of.....County of.....

I hereby certify that the within instrument was filed in this office for record on the.....day of.....19....., and was filed in Book No.....Page No.....of County Records.

Signature.....Title.....

Township 35 North, Range 14 East, Section 2, Index No. C-17, Page No.....