

245861

FILED ON:

06/06/2025 03:37 PM

CORTNEY BRITTEN CLEEREMAN  
REGISTER OF DEEDS

FOREST COUNTY WI

PAGES: 1

FOREST COUNTY U.S. PUBLIC LAND  
SURVEY MONUMENT LOCATION RECORD

☒ LANDMARK ☐ BENCHMARK FOUND ☒  
CORNER IDENTITY: BERNTSEN SNM-1 STEEL NAIL MARKER SET ☐  
RESET ☒  
RE-TIED ☒

FOREST COUNTY COORDINATE: N: 552999.346  
E: 894190.394

ELEVATION-(FEET): \_\_\_\_\_ DATUM: NAD83 (2011)

WEATHER: SUNNY

DATE OF SURVEY: 8/10/2021 TEMPERATURE: 80 °F

SURVEY PARTY: KEITH WALKOWSKI & COLLIN MARQUARDT

## BASIS FOR MONUMENT LOCATION:

(DESCRIBE METHOD OF SURVEY AND CORNER AUTHENTICATION)

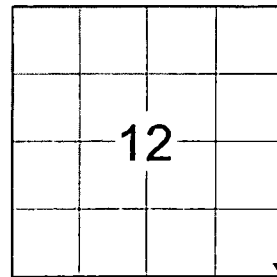
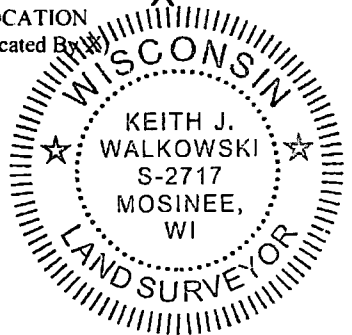
SEARCHED FOR THE SOUTHEAST CORNER OF SECTION 12 AND FOUND A MAG NAIL AND FIVE WITNESS TIES (4 TIES ARE SHOWN ON THE 1985 TIESHEET). THE MAG NAIL DID NOT CHECK WITH THE FOUND TIES. UPON THE COMPLETION OF THE STATE HIGHWAY "32" RESURFACING PROJECT, I SET A BERNTSEN SNM-1 STEEL NAIL MARKER AT THE INTERSECTION OF THE TIES AND PERPETUATED THE CORNER LOCATION AS SHOWN BELOW.

SECTION 12  
TOWNSHIP 35 N  
RANGE 14 E

LAONA

CITY, VILLAGE, TOWN

SECTION

LOCATION  
(Indicated By X)

CERTIFIED CORRECT:

*Keith J. Walkowski*

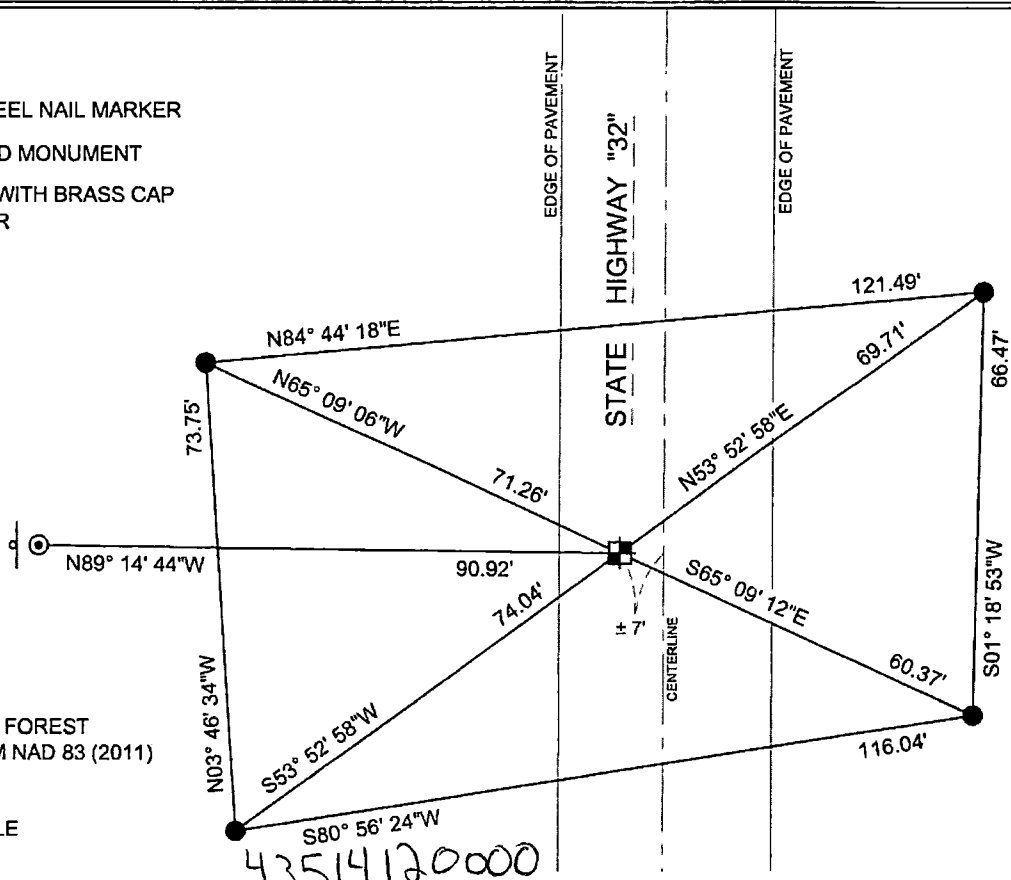
KEITH WALKOWSKI S-2717

Registered Land Surveyor

DATE: OCTOBER 18TH, 2021COMPANY RIVERSIDE LAND SURVEYING LLC

## TIE SKETCH:

- ☒ - SET BERNTSEN SNM-1 STEEL NAIL MARKER  
☒ - FOUND ALUMINUM CAPPED MONUMENT  
☒ - FOUND 2" O.D. IRON PIPE WITH BRASS CAP  
STAMPED 91.0' TO CORNER  
☒ - EXISTING SIGN



BEARINGS ARE BASED ON THE FOREST  
COUNTY COORDINATE SYSTEM NAD 83 (2011)  
AND REFERENCED AS SHOWN

THIS DRAWING IS NOT TO SCALE

43514120000

J-25

NO.

J-25

NO.

## U. S. PUBLIC LAND SURVEY MONUMENT RECORD

## INSTRUCTIONS:

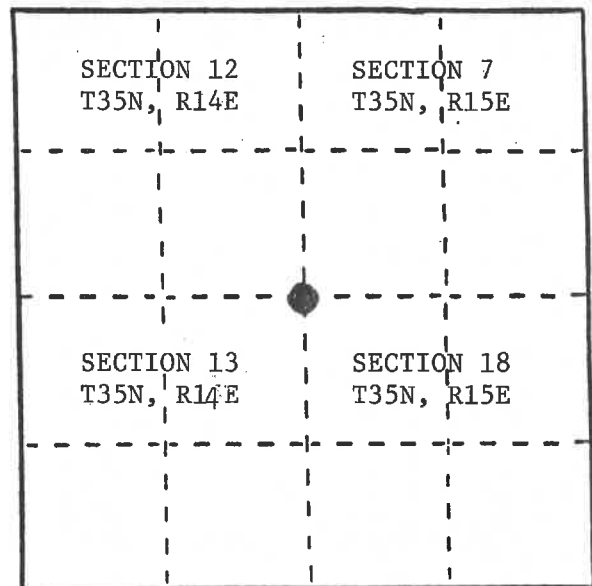
This record shall show the location of the corner and shall include all of the following nine elements (a through i).

- (a) Identify the corner by reference to the U.S. public land survey system.

● = Corner monument restored.

Section Corner to Sections 7, 12, 13 and 18, T35N, R15E, 4th P.M.

REGISTER'S OFFICE  
Forest County, Wis.  
Received for record this 6th day  
of Sept, A.D., 1989 at  
10:25 o'clock A.M. and recorded  
in Vol. CORNER RESTORATIONS  
page 5-1  
Paul Hochmutter  
Register of Deeds.



- (b) Describe any record evidence, monument evidence, occupational evidence, testimonial evidence or any other material evidence you considered, and whether the monument was found or placed.

In 1857 Artemas Curtis established this corner. All evidence being destroyed in the construction and reconstruction of State Highway #32 over the years, the last time in 1985.

In 1980 Forest Service surveyor, William Cochrane, restored this corner and placed a railroad spike in the highway and a reference monument N89°-18.3'W, 91.00 feet. He used this corner to subdivide Sections 12 and 13, T35N, R14E.

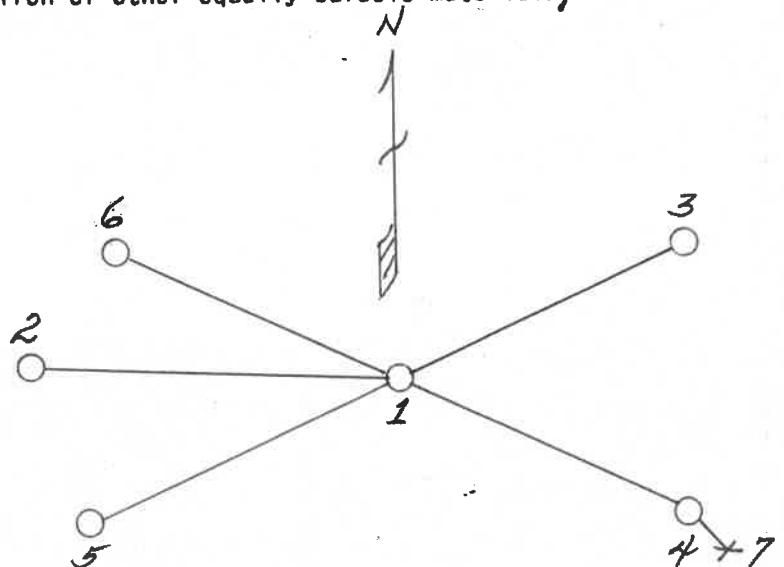
On 7/10/1985 DOT filed with the County Clerk a "Preservation of Landmark" form on this corner whereby four additional Witness Corner Monuments were established.

On 3/23/89 I located the Forest Service Reference Corner and DOT Witness Corners and ran our traverse through DOT Witness Corner 2 and 3. On 7/1/89 I placed a railroad spike in the surface of Highway #32 and placed a steel sign post southeast of DOT Witness Corner #2 .47 feet.

- (c) In the plan view drawing below, provide reference ties to at least 4 witness monuments, or, if the location is within a municipality, to at least 2 witness monuments. (Witness monuments shall be made of concrete, natural stone, iron or other equally durable material.)  
Describe witness monuments.

- (d) Show a plan view drawing depicting the relevant monuments and reference ties which is sufficient in detail to enable accurate relocation of the corner monument if the corner monument is disturbed. Indicate north.

- 1) Railroad spike
- 2) Forest Service brass tablet on a 2" x 60" iron pipe N89°-18.3'W, 91.00 feet
- 3) DOT Berntsen aluminum monument, WC #1, N52°-51'E, 69.68'
- 4) DOT Berntsen aluminum monument, WC #2, S66°-05'E, 60.04'
- 5) DOT Berntsen aluminum monument, WC #3, S52°-51'W, 73.96'
- 6) DOT Berntsen aluminum monument, WC #4, N66°-05'W, 71.22'
- 7) Steel sign post SE of DOT WC #2, .47'



- (e) Describe any material discrepancy between the location of the corner as restored or reestablished and the location of that corner as previously restored or reestablished by distance and direction. Show the discrepancy on the plan view drawing under (d), above. Show the distances between the corner as previously restored or reestablished and (1) the corner as restored or reestablished, and (2) to at least 2 of the witness monuments shown on the drawing in (d), above.

None

- (f) Was the corner restored through acceptance of (1) an obliterated evidence location, or, (2) a found perpetuated location?

A perpetuated location

- (g&h) Was the corner reestablished through lost corner proportionate methods? If so, show the method, including the directions and distances to other public land survey corners used as evidence or used for proportioning in determining the corner location?

- (i) I, Milo E. Stefan  
(Type or print name) certify that the corner location shown on this record was determined by me or under my direction and control and that this U.S. Public Land Survey Monument Record is correct and complete to the best of my knowledge and belief.

Milo E. Stefan  
Signature

July 7, 1989  
Date

Certificate ready for filing:

Dale B. Staeger  
District Ranger

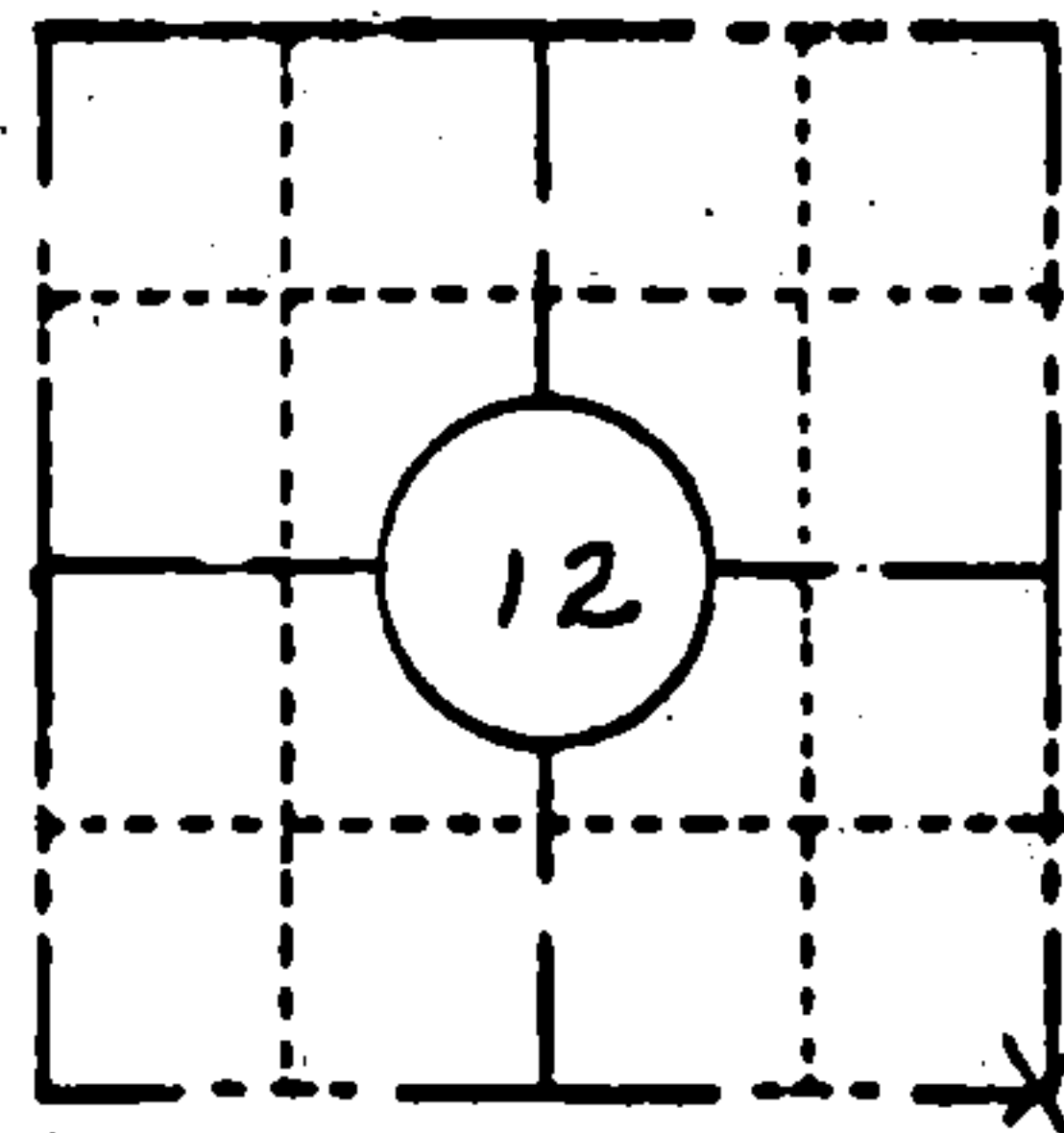


ORIGINAL ON FILE IN CO CLERK'S OFFICE  
COPY HERE FOR REFERENCE

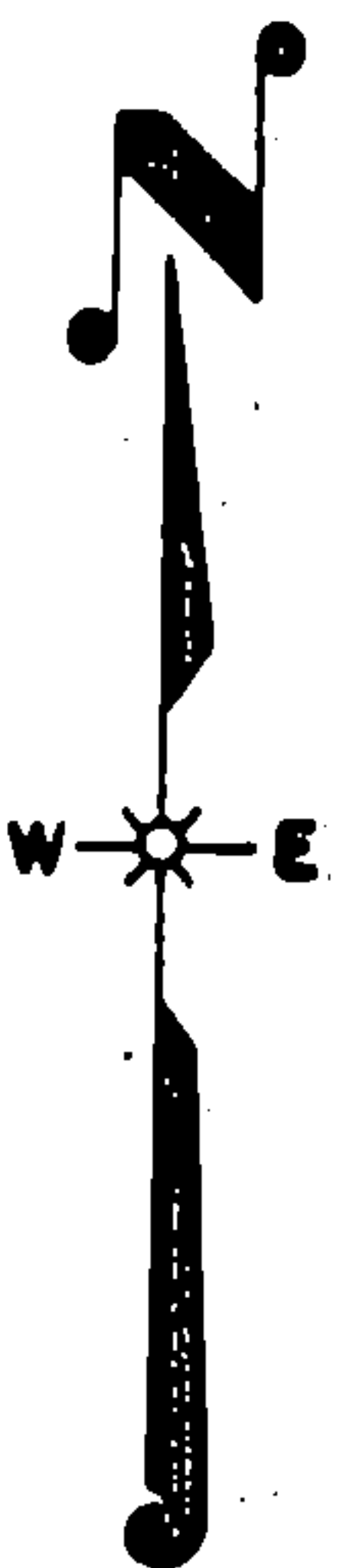
FIELD SURVEY NOTES  
PRESERVATION OF LANDMARKS  
(Pursuant to Section 59.635(7) Wisconsin Statutes  
E-D-707-69

State of Wisconsin / Department of Transportation

COUNTY FOREST		
TOWN LAONA, BLACKWELL		
HIGHWAY STH 32		
SECTION 12	TOWNSHIP T 35 N	RANGE R 14 E
TYPE OF LANDMARK R.R. SPIKE SET BY USFS		

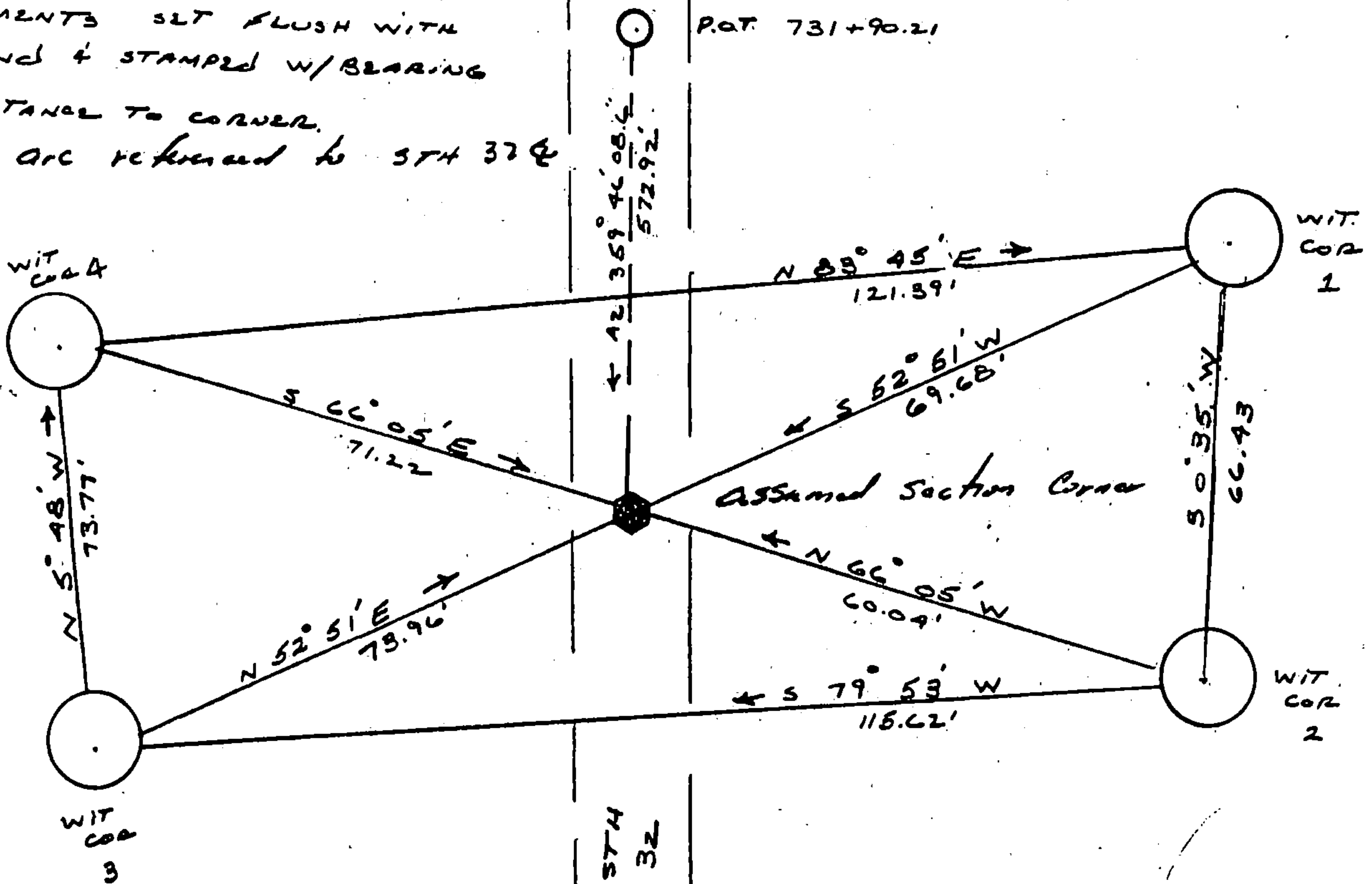


LOCATION SKETCH  
(Location of landmark indicated by "x")



This space for copy of field notes or ties to the above described landmarks

ALL WITNESS MONUMENTS  
ARE D.O.T. BEANSTEN DRIVABLE  
MONUMENTS SET FLUSH WITH  
GROUND & STAMPED W/BEARING  
& DISTANCE TO CORNER.  
B-95 ARE REFERRED TO STH 32 &



FILED UNDER PROJECT 9131-03-70		
DISTRICT OFFICE NUMBER 03-07	CITY RHINELANDER	COUNTY ONEIDA
LOCATED OR ESTABLISHED BY NAME ROBERT B. JOHNSON		
TITLE SURVEY CREW CHIEF DATE 5-14-85 under the direct supervision of MICHAEL H955 500809		

COUNTY CLERK'S OFFICE COUNTY OF Forest WISCONSIN } 85	
DATE RECEIVED FOR RECORD 7-10-85	DATE COPY SENT TO COUNTY SURVEYOR N/A
SIGNATURE OF COUNTY CLERK Dora C. James	

PRESERVATION OF LANDMARKS

PAGE \_\_\_\_\_

43514120000

J-25