

245862

FILED ON:

06/06/2025 03:37 PM

CORTNEY BRITTEN CLEEREMAN
REGISTER OF DEEDS

FOREST COUNTY WI

PAGES: 1

FOREST COUNTY U.S. PUBLIC LAND
SURVEY MONUMENT LOCATION RECORD

☒ LANDMARK ☐ BENCHMARK FOUND ☒
CORNER IDENTITY: BERNTSEN SNM-1 STEEL NAIL MARKER SET ☐
RESET ☒
RE-TIED ☒

FOREST COUNTY COORDINATE: N: 555593.946
E: 894193.041

ELEVATION-(FEET): _____ DATUM: NAD83 (2011)

WEATHER: SUNNY

DATE OF SURVEY: 8/10/2021 TEMPERATURE: 80 °F

SURVEY PARTY: KEITH WALKOWSKI & COLLIN MARQUARDT

BASIS FOR MONUMENT LOCATION:

(DESCRIBE METHOD OF SURVEY AND CORNER AUTHENTICATION)

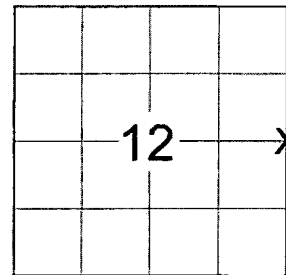
SEARCHED FOR THE EAST 1/4 CORNER OF SECTION 12 AND FOUND A SNM-1 STEEL NAIL MARKER. THE AREA HAD BEEN RECENTLY EXCAVATED AND REPAVED FOR A CULVERT REPLACEMENT. RECOVERED FOUR TIES FROM THE 1985 TIESHEET STAMPED WITH THE BEARING AND DISTANCE TO THE CORNER. SET A BERNTSEN SNM-1 STEEL NAIL MARKER AT THE CORNER LOCATION UPON THE COMPLETION OF THE STATE HIGHWAY "32" RESURFACING PROJECT AND PERPETUATED THE CORNER LOCATION AS SHOWN BELOW.

SECTION 12
TOWNSHIP 35 N
RANGE 14 E

LAONA

CITY, VILLAGE, TOWN

SECTION

LOCATION
(Indicated By X)

CERTIFIED CORRECT:

Keith J. Walkowski

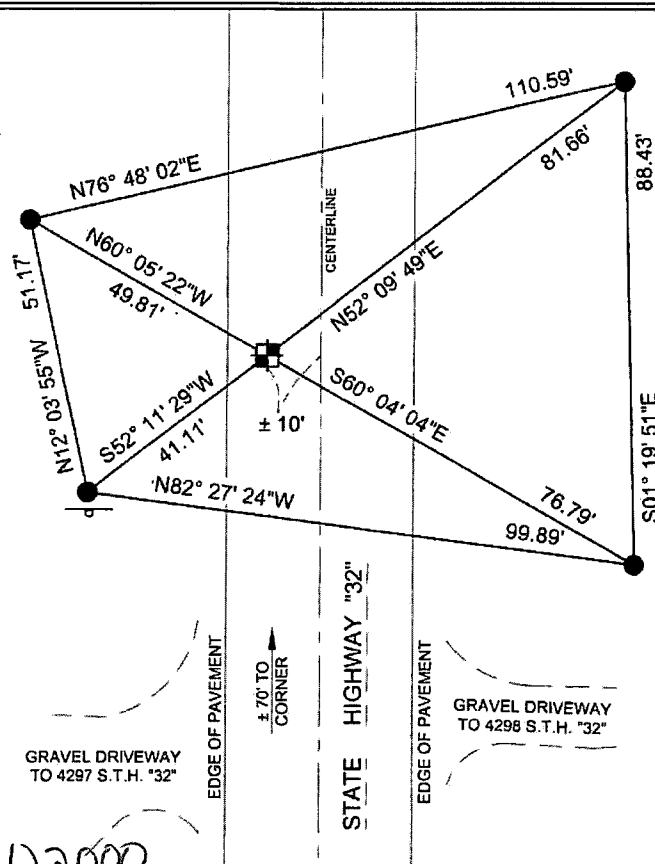
KEITH WALKOWSKI S-2717

Registered Land Surveyor

DATE: OCTOBER 18TH, 2021COMPANY RIVERSIDE LAND SURVEYING LLC

TIE SKETCH:

- ☒ - SET BERNTSEN SMN-1 STEEL NAIL MARKER
● - FOUND BERNTSEN CAPPED ALUMINUM MONUMENT
STAMPED WITH BEARING & DISTANCE
— - EXISTING SIGN



BEARINGS ARE BASED ON THE FOREST
COUNTY COORDINATE SYSTEM NAD 83 (2011)
AND REFERENCED AS SHOWN

THIS DRAWING IS NOT TO SCALE

43514/22000

G-25

NO.

G-25

NO.

U. S. PUBLIC LAND SURVEY MONUMENT RECORD.

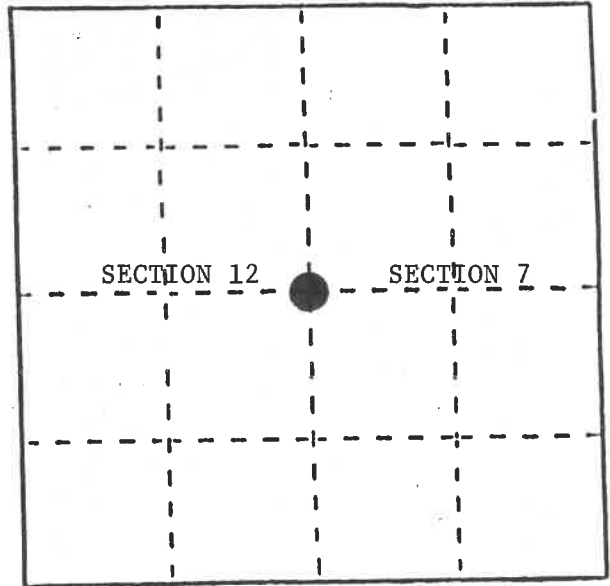
INSTRUCTIONS:

This record shall show the location of the corner and shall include all of the following nine elements (a through i).

- (a) Identify the corner by reference to the U.S. public land survey system.

● = Corner monument restored.

Quarter Corner to Sections 7 & 12,
T35N, R14 and 15E, 4th P.M.



REGISTER'S OFFICE
Forest County, Wis.
Received for record this 16th day
of Sept A.D., 1989 at
10:25 o'clock A.M. and recorded
in Vol. CORNER RESTORATIONS
page G-1
Paul H. Schenckner
Register of Deeds

- (b) Describe any record evidence, monument evidence, occupational evidence, testimonial evidence or any other material evidence you considered, and whether the monument was found or placed.

In 1857 Artemas Curtis established this corner. All evidence being destroyed in the construction and reconstruction of State Highway #32.

In 1980 Forest Service surveyor William Cochrane restored this corner by lost methods and placed a railroad spike in the highway and a reference monument N88°-55.1'W, 89.00 feet. This railroad spike was removed in the 1985 resurfacing of the highway and the DOT placed four Witness Corners to this corner.

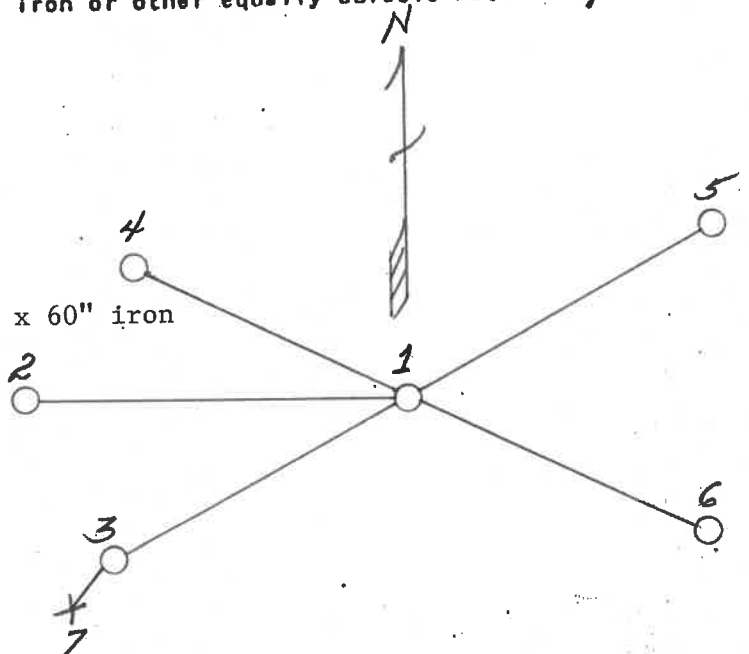
7/10/85 the DOT filed a "Preservation of Landmarks" form with the County Clerk.

On 3/23/89 I located the Forest Service reference monument and the DOT Witness Corners and placed a PK nail in the surface of Highway 32 for the corner position. This being used as the Quarter Corner for the subdivision of Section 7, T35N, R15E. After confirmation that this position conforms to the survey to the west I restored on 7/1/89 and replaced the PK nail with a railroad spike in the surface of Highway #32.

- (c) In the plan view drawing below, provide reference ties to at least 4 witness monuments, or, if the location is within a municipality, to at least 2 witness monuments. (Witness monuments shall be made of concrete, natural stone, iron or other equally durable material.) Describe witness monuments.

- (d) Show a plan view drawing depicting the relevant monuments and reference ties which is sufficient in detail to enable accurate relocation of the corner monument if the corner monument is disturbed. Indicate north.

- 1) Railroad spike
- 2) Forest Service brass tablet on 2" x 60" iron pipe, N88°-55.1'W, 89.00 feet
- 3) DOT Berntsen aluminum monument, W.C. #1, S51°-10'W, 41.11'
- 4) DOT Berntsen aluminum monument, W.C. #2, N61°-04'W, 49.81'
- 5) DOT Berntsen aluminum monument, W.C. #3, N51°-10'E, 81.63'
- 6) DOT Berntsen aluminum monument, W.C. #4, S61°-04'E, 76.79'
- 7) Steel sign post, SW, .43' from DOT W.C. #1



- (e) Describe any material discrepancy between the location of the corner as restored or reestablished and the location of that corner as previously restored or reestablished by distance and direction. Show the discrepancy on the plan view drawing under (d), above. Show the distances between the corner as previously restored or reestablished and (1) the corner as restored or reestablished, and (2) to at least 2 of the witness monuments shown on the drawing in (d), above.

None

- (f) Was the corner restored through acceptance of (1) an obliterated evidence location, or, (2) a found perpetuated location?

A perpetuated location.

- (g&h) Was the corner reestablished through lost corner proportionate methods? If so, show the method, including the directions and distances to other public land survey corners used as evidence or used for proportioning in determining the corner location?

- (i) I, Milo E. Stefan
(type or print name) certify that the corner location shown on this record was determined by me or under my direction and control and that this U.S. Public Land Survey Monument Record is correct and complete to the best of my knowledge and belief.

Milo E. Stefan
Signature

July 7, 1989
Date

CERTIFICATE READY FOR FILING:

Dale B. Staege
District Ranger

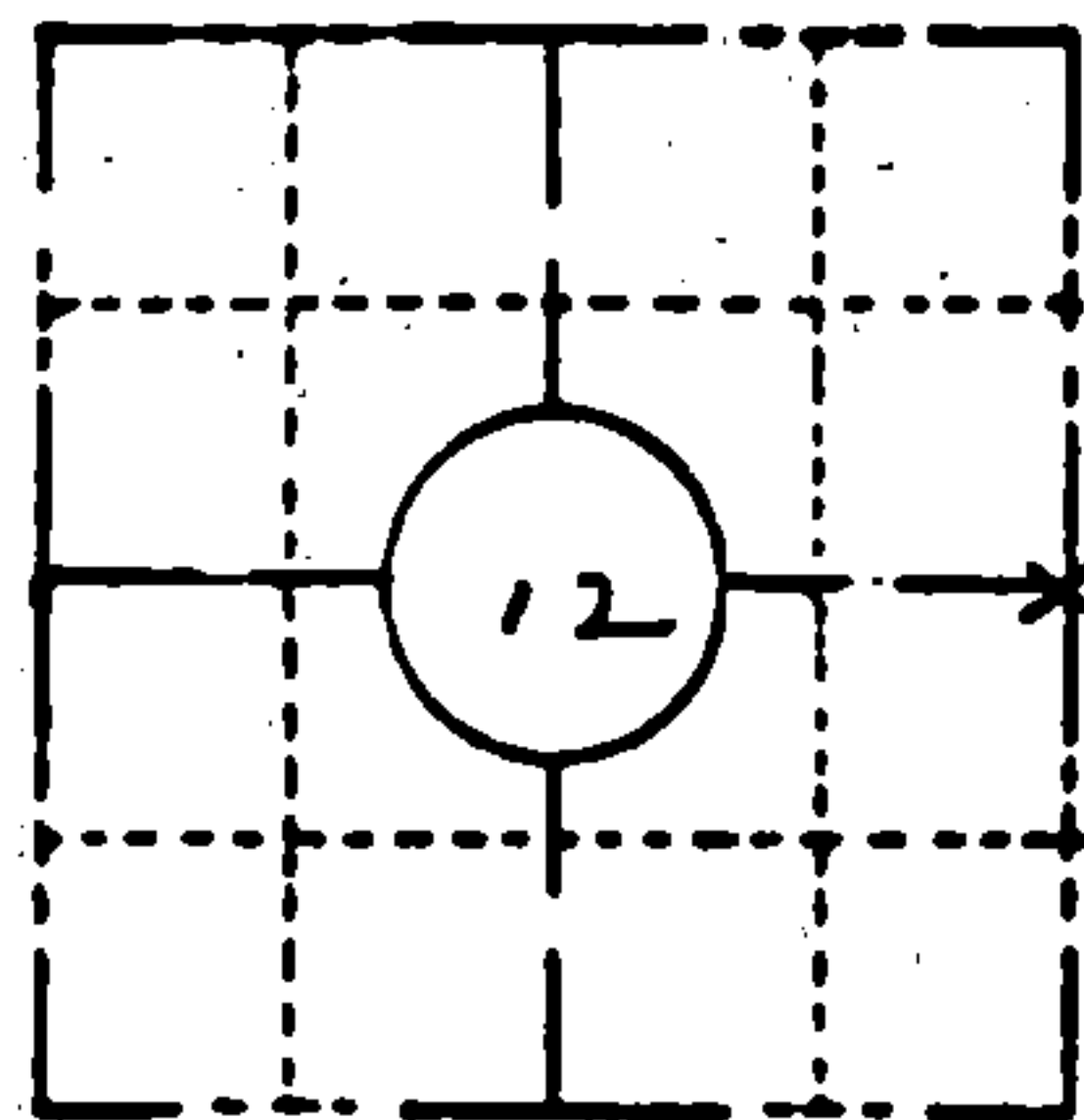


ORIGINAL ON FILE IN CO CLERK'S OFFICE
COPY HERE FOR REFERENCE

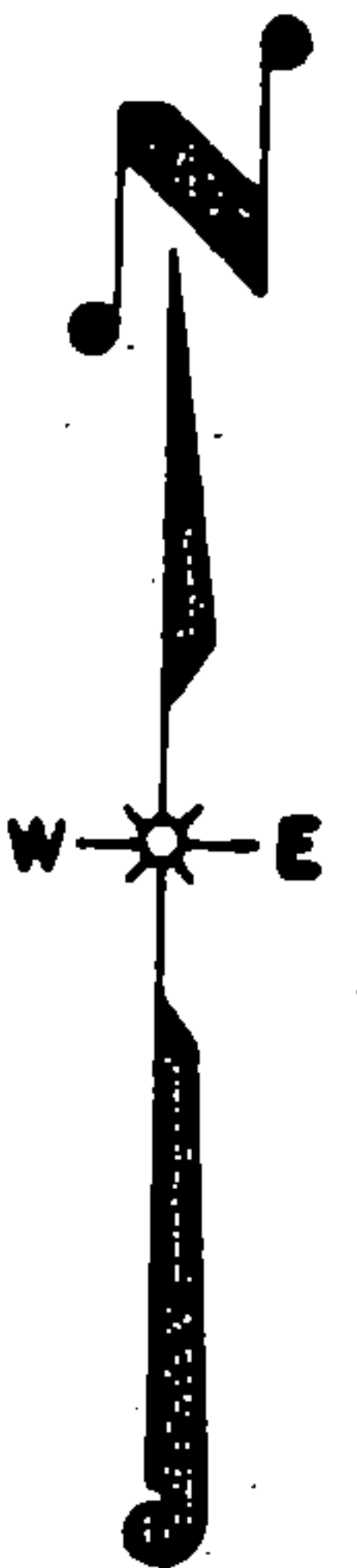
FIELD SURVEY NOTES
PRESERVATION OF LANDMARKS
(Pursuant to Section 59.635(7) Wisconsin Statutes
E-D-707-89

State of Wisconsin / Department of Transportation

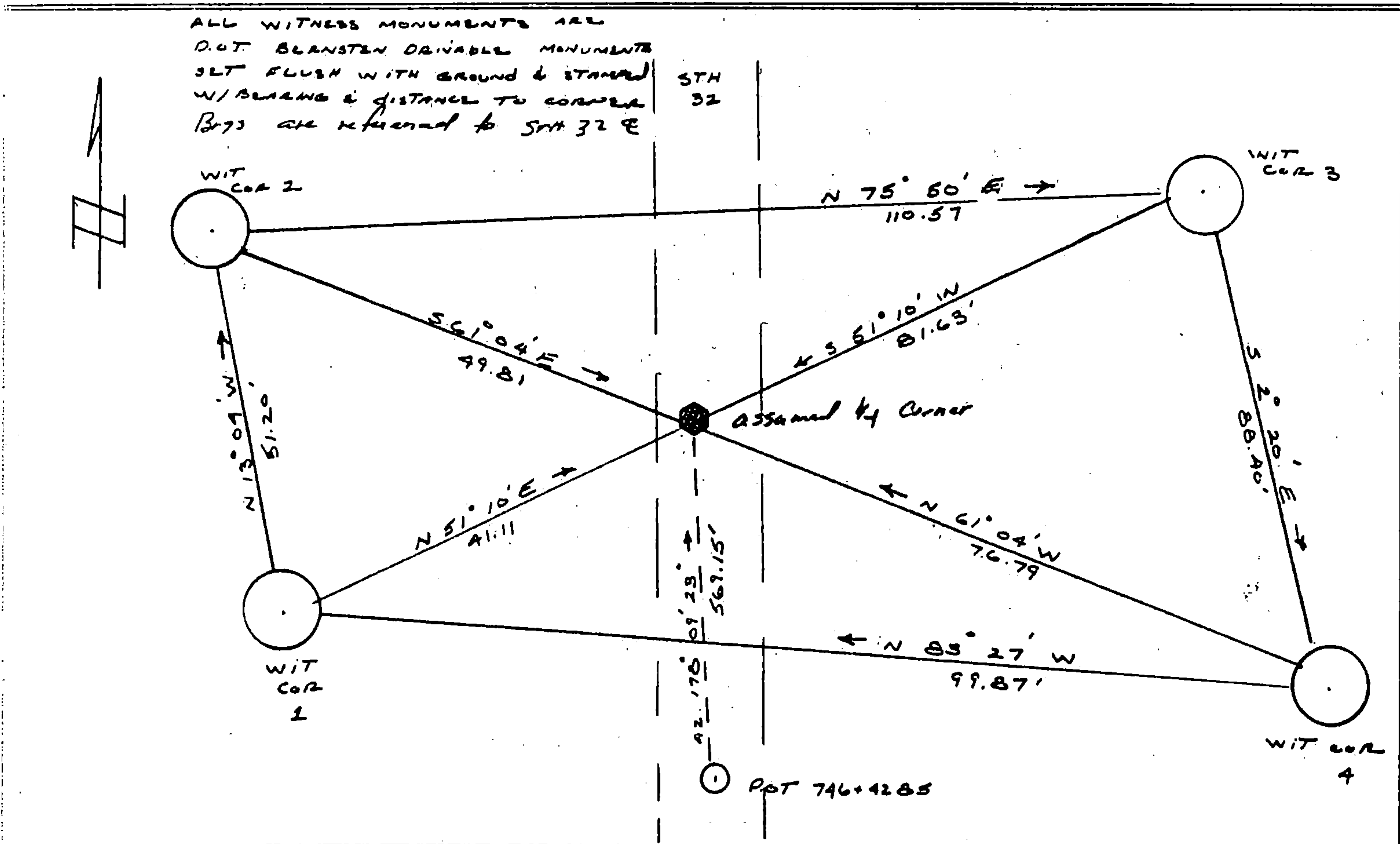
COUNTY FOREST		
TOWN LAONA		
HIGHWAY STH 32		
SECTION 12	TOWNSHIP T 35 N	RANGE R 14 E
TYPE OF LANDMARK R.R. SPIKE SET BY U.S.F.S.		



LOCATION SKETCH
(Location of landmark indicated by "x")



This space for copy of field notes or ties to the above described landmarks



FILED UNDER PROJECT 9131-03-70			COUNTY CLERK'S OFFICE COUNTY OF Forest WISCONSIN } 55	
DISTRICT OFFICE NUMBER 03-07	CITY RHINELANDER	COUNTY ONEIDA	DATE RECEIVED FOR RECORD 7-10-85	DATE COPY SENT TO COUNTY SURVEYOR N/A
LOCATED OR ESTABLISHED BY NAME ROBERT B. JOHNSON			SIGNATURE OF COUNTY CLERK Dora C. James	
TITLE SURVEY CREW CHIEF DATE 5-14-85 Under the direct supervision of MICHAEL Hess 500809				

PRESERVATION OF LANDMARKS

PAGE _____

43514122000

G-25

232163

FOREST COUNTY, WI
CORTNEY BRITTEN CLEEREMAN
REGISTER OF DEEDS
RECEIVED FOR RECORD

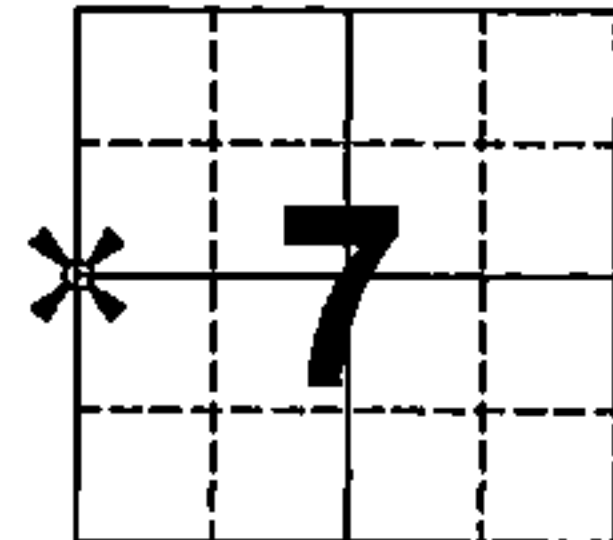
OCT 23 2020

Time: 9:00 AM
Vol: Corner Restoration
Page Number: G-1

U.S. PUBLIC LAND SURVEY MONUMENT RECORD
FOREST COUNTY

TYPE OF MONUMENT: BERNTSEN STEEL SURVEY MARKER NAIL
WISCONSIN COUNTY COORDINATE SYSTEM (FOREST)
DATUM: NAD 83 (2011 ADJUSTMENT)
NORTHING 555594.053
EASTING 894192.887
DRAWN BY: ANDREW HUNTER

SECTION 7
TOWN 35 NORTH
RANGE 15 EAST



BASIS FOR MONUMENT LOCATION

HISTORY OF ORIGINAL CORNER ESTABLISHMENT AND SUBSEQUENT RESTORATIONS
AND DESCRIPTION OF ANY RECORD, MONUMENT, OCCUPATIONAL, TESTIMONIAL
OR OTHER EVIDENCE CONSIDERED:

SEE PREVIOUS TIE SHEET PREPARED BY
MILO E. STEFAN DATED JULY 7, 1989 FOR
MONUMENT HISTORY.

I COMPLETED A FIELD SURVEY PRIOR TO HIGHWAY
CONSTRUCTION ALONG S.T.H. "32" AND FOUND A R.R.
SPIKE IN ASPHALT AS CALLED FOR.

THIS MONUMENT FIT WELL WITH THE 4 EXISTING
WITNESS MONUMENTS AND THE PUBLISHED COUNTY
COORDINATES, AND WAS ACCEPTED AS THE TRUE
CORNER LOCATION. I SET A BERNTSEN STEEL SURVEY
MARKER NAIL, AND VERIFIED EXISTING WITNESS TIES
AFTER CONSTRUCTION WAS COMPLETED.

SEAL:



CERTIFIED CORRECT:

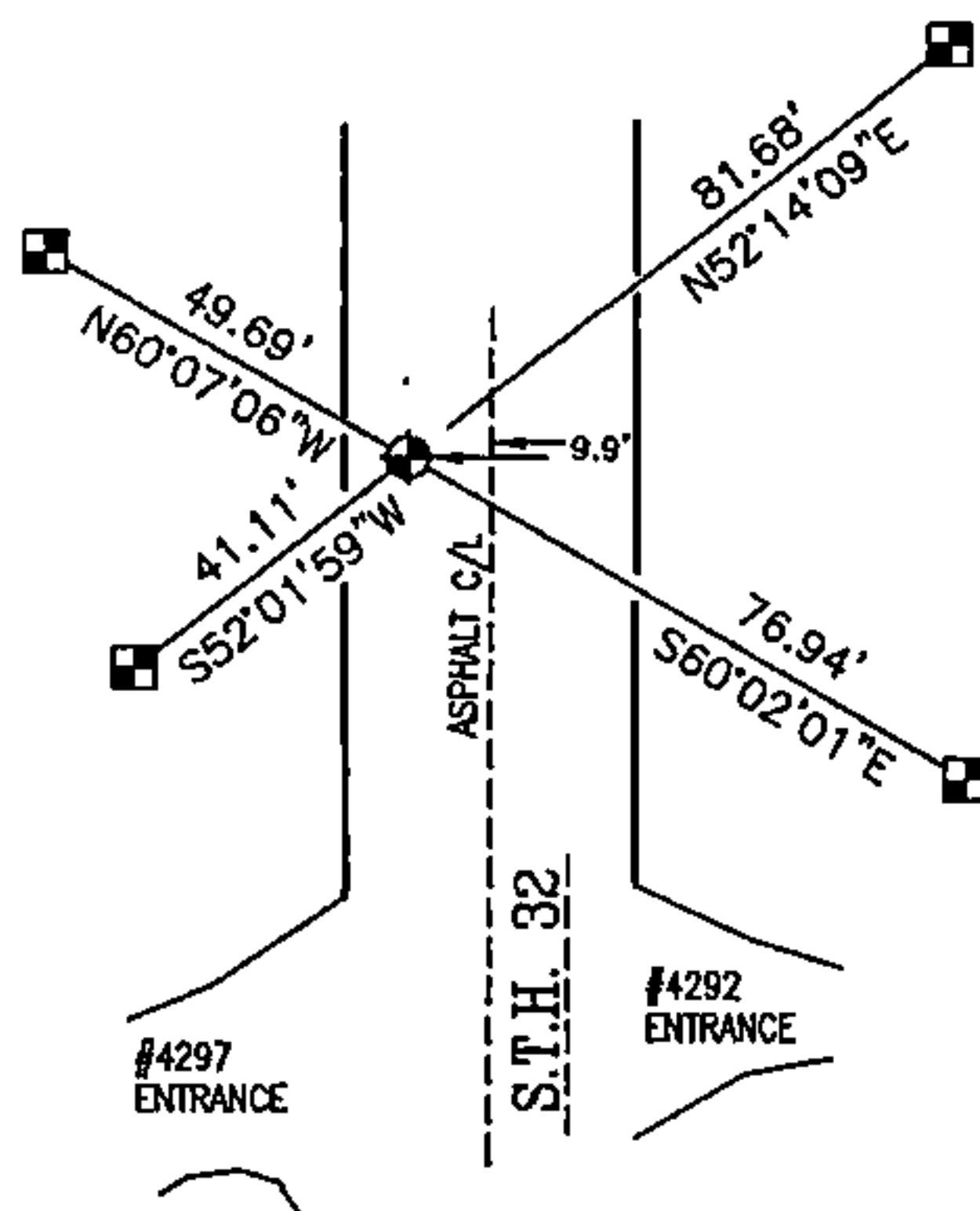
Andrew L. Hunter

PROFESSIONAL LAND SURVEYOR

DATE OCTOBER 15, 2020

TIE SKETCH

SHOW AT LEAST FOUR TIES, ALSO FENCE LINES, ROADS, TOPO, SIZE AND TYPE OF WITNESS TREES AND ANY OTHER
PERTINENT SITE DETAILS. IF OFF THE ROAD, THE BEST WAY TO ARRIVE AT THE CORNER.



FOUND DOT BERNTSEN
ALUMINUM MONUMENT

SET BERNTSEN STEEL SURVEY MARKER NAIL



SCALE 1"=50'

43514122000

G-1