

245859

FILED ON:

06/06/2025 03:37 PM

CORTNEY BRITTEN CLEEREMAN
REGISTER OF DEEDS

FOREST COUNTY WI

PAGES: 1

FOREST COUNTY U.S. PUBLIC LAND
SURVEY MONUMENT LOCATION RECORD

☒ LANDMARK ☐ BENCHMARK FOUND ☐
CORNER IDENTITY: BERNTSEN SNM-1 STEEL NAIL MARKER SET ☐
RESET ☒
RE-TIED ☒

FOREST COUNTY COORDINATE: N: 547682.337
E: 894184.738

ELEVATION-(FEET): _____ DATUM: NAD83 (2011)

WEATHER: PARTLY CLOUDY

DATE OF SURVEY: 8/9/2021 TEMPERATURE: 82 °F

SURVEY PARTY: CHRISTOPHER FIERI & COLLIN MARQUARDT

BASIS FOR MONUMENT LOCATION:

(DESCRIBE METHOD OF SURVEY AND CORNER AUTHENTICATION)

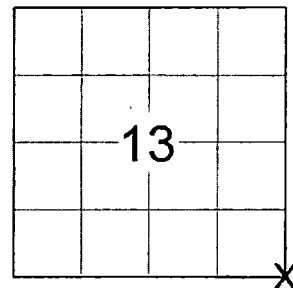
SEARCHED FOR THE SOUTHEAST CORNER OF SECTION 13 AND
COULD NOT FIND A CORNER MONUMENT BUT DID FIND THE 5
WITNESS TIES SHOWN ON THE 1985 TIESHEET. INTERSECTED THE
TIES AND SET A BERNTSEN SNM-1 STEEL NAIL MARKER AT THE
CORNER LOCATION UPON THE COMPLETION OF THE STATE
HIGHWAY "32" RESURFACING PROJECT AND PERPETUATED THE
CORNER LOCATION AS SHOWN BELOW.

SECTION 13
TOWNSHIP 35 N
RANGE 14 E

LAONA

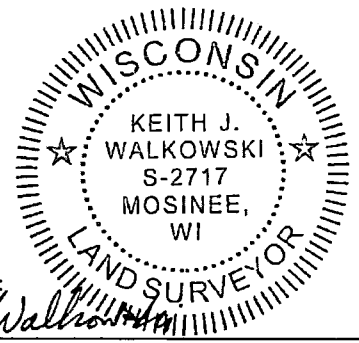
CITY, VILLAGE, TOWN

SECTION

LOCATION
(Indicated By X)

N-25

NO.



CERTIFIED CORRECT:

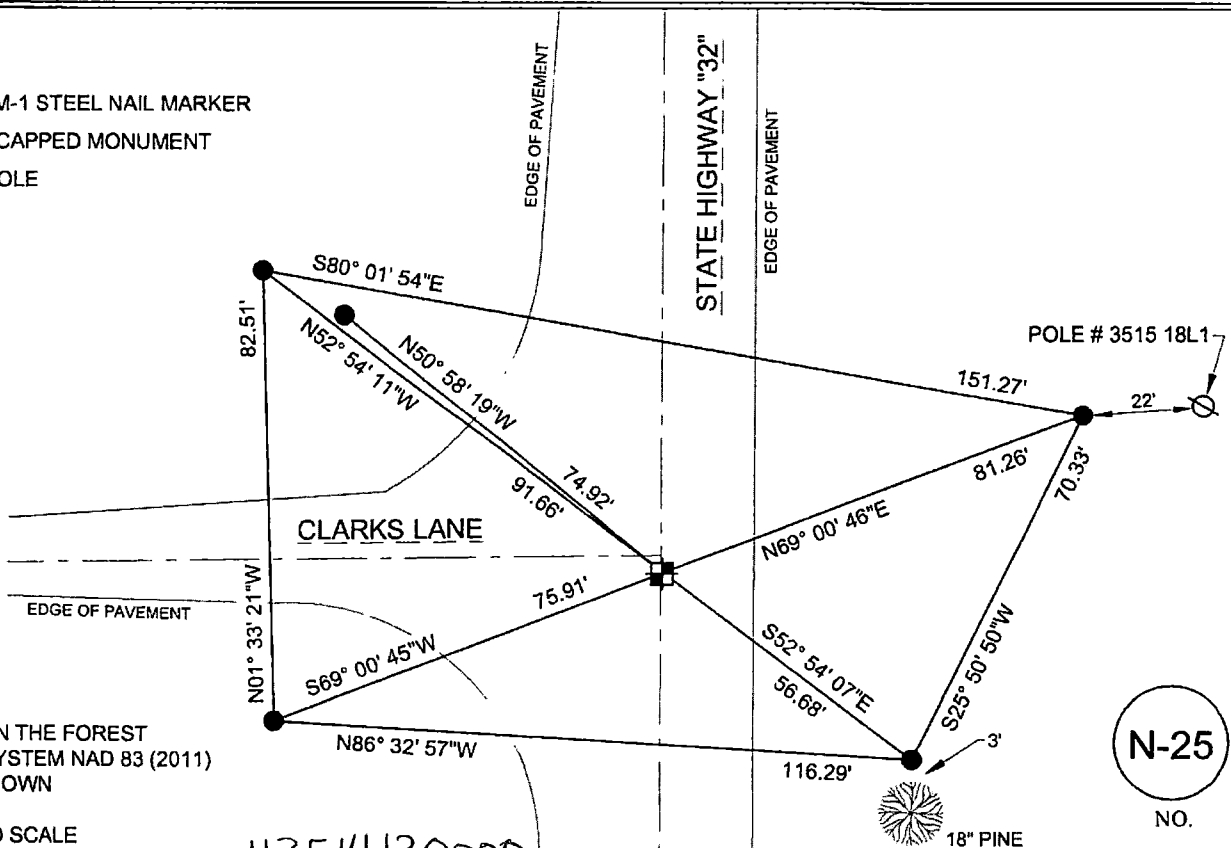
Keith J. Walkowski

KEITH J. WALKOWSKI S-2717

Registered Land Surveyor

DATE: OCTOBER 18TH, 2021COMPANY RIVERSIDE LAND SURVEYING LLCTIE SKETCH:

- ☒ - SET BERNTSEN SNM-1 STEEL NAIL MARKER
☒ - FOUND ALUMINUM CAPPED MONUMENT
☒ - EXISTING UTILITY POLE



BEARINGS ARE BASED ON THE FOREST
COUNTY COORDINATE SYSTEM NAD 83 (2011)
AND REFERENCED AS SHOWN

THIS DRAWING IS NOT TO SCALE

43514130000

N-25

NO.

138184

U. S. PUBLIC LAND SURVEY MONUMENT RECORD.

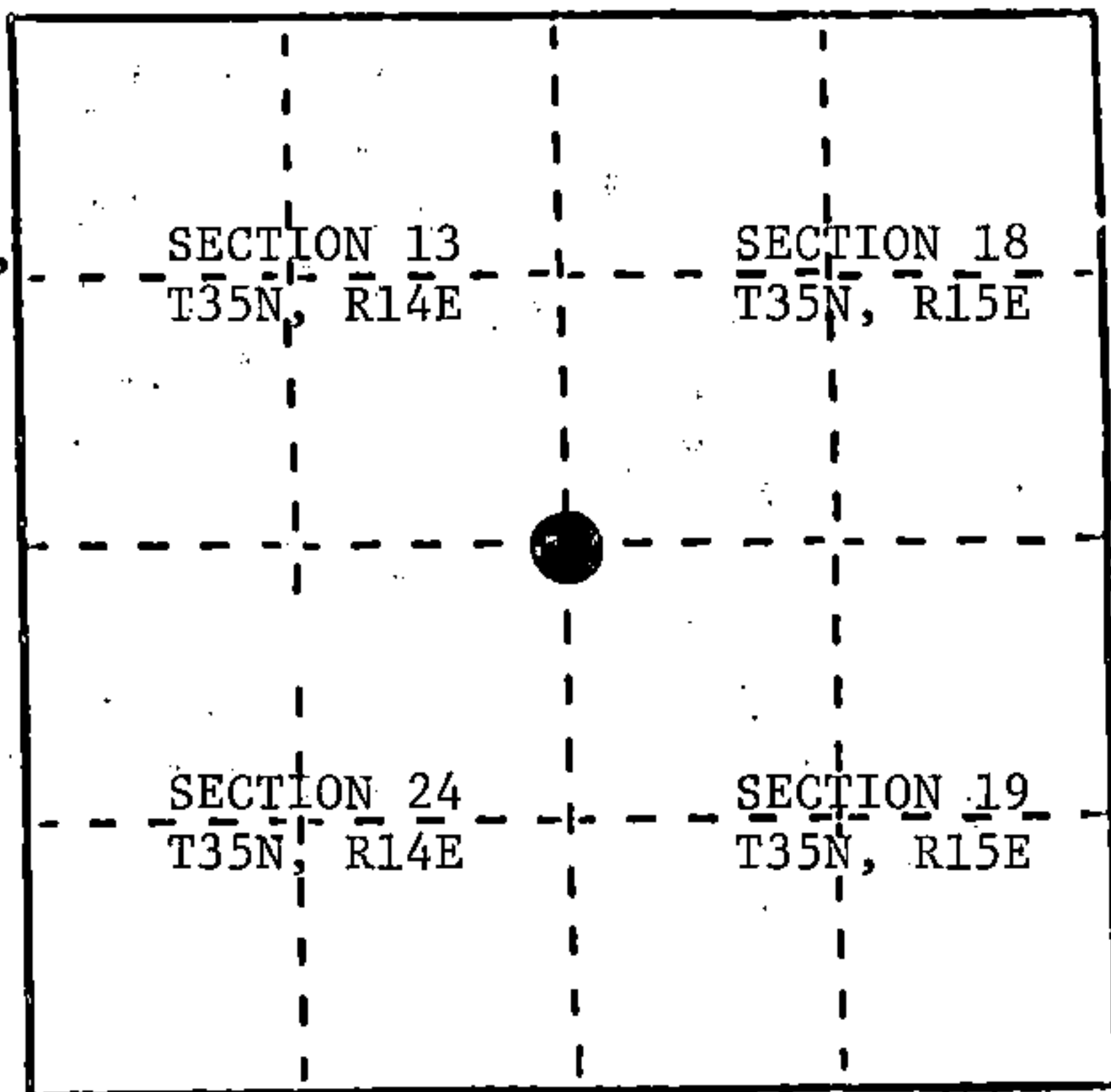
INSTRUCTIONS:

This record shall show the location of the corner and shall include all of the following nine elements (a through i).

- (a) Identify the corner by reference to the U.S. public land survey system.

③ - Corner monument restored.

Section Corner to Sections 13, 24, 18 & 19,
T35N, R14 - 15E, 4th P.M.



REGISTER'S OFFICE
Forest County, Wis.

Received for record this 19th day
of Sept A.D., 1989 at
10:25 o'clock A.M. and recorded
in Vol. CORNER RESTORATIONS
page NS-1
Paul F. Schenck
Register of Deeds

- (b) Describe any record evidence, monument evidence, occupational evidence, testimonial evidence or any other material evidence you considered, and whether the monument was found or placed.

In 1857 Artemas Curtis established this corner. All evidence being destroyed in the construction and reconstruction of State Highway #32 over the years, the last time in 1985.

In 1980 Forest Service surveyor William Cochrane recovered this corner and placed a reference monument, N50°W, 75.00 feet. He used the corner to subdivide Section 13, T35N, R14E.

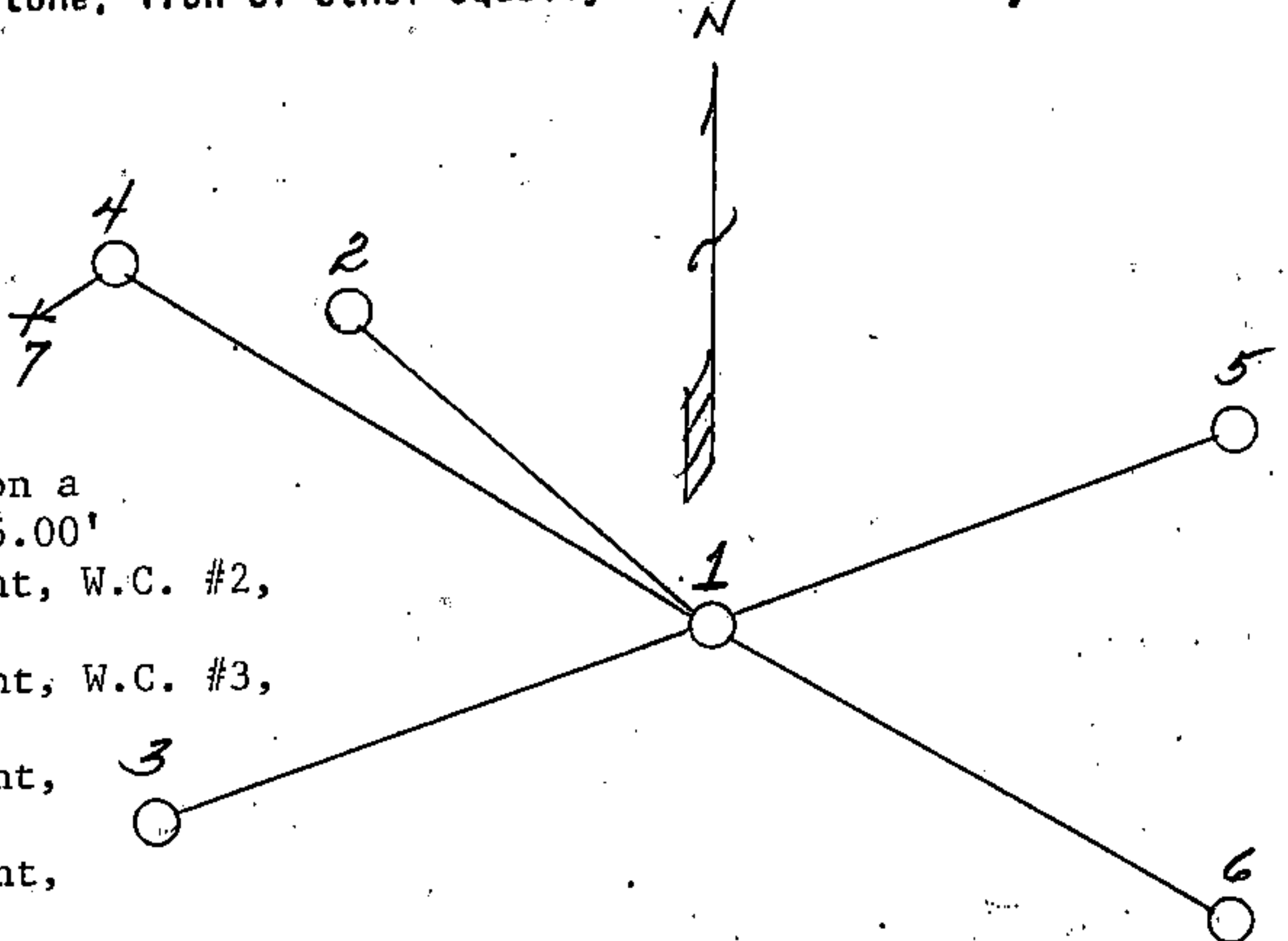
On 7/10/85 the DOT filed with the County Clerk a "Preservation of Landmarks" form on this corner whereby they placed four Witness Corners to reference this corner.

On 3/28/89 I ran a traverse to a PK nail in the highway which we set from the Forest Service and DOT references. After confirmation of this corner position, I returned on 7/1/89 and replaced the PK nail with a railroad spike and placed a steel sign post SW of the DOT W.C. #3, .57'. We also made a new BT to the Forest Service reference monument, a 16" Sugar Maple, S81°W, 52.70'.

- (c) In the plan view drawing below, provide reference ties to at least 4 witness monuments, or, if the location is within a municipality, to at least 2 witness monuments. (Witness monuments shall be made of concrete, natural stone, iron or other equally durable material.)
Describe witness monuments.

- (d) Show a plan view drawing depicting the relevant monuments and reference ties which is sufficient in detail to enable accurate relocation of the corner monument if the corner monument is disturbed. Indicate north.

- 1) Railroad spike
- 2) Forest Service brass tablet on a 2" x 60" iron pipe, N50°W, 75.00'
- 3) DOT Berntsen aluminum monument, W.C. #2, S68°-01'W, 75.91'
- 4) DOT Berntsen aluminum monument, W.C. #3, N53°-52'W, 91.75'
- 5) DOT Berntsen aluminum monument, W.C. #4, N68°-01'E, 81.37'
- 6) DOT Berntsen aluminum monument, W.C. #5, S53°-52'E, 56.76'
- 7) Steel sign post, SW of DOT W.C. #3, .57'



43514130000

N-1

N-1

- (e) Describe any material discrepancy between the location of the corner as restored or reestablished and the location of that corner as previously restored or reestablished by distance and direction. Show the discrepancy on the plan view drawing under (d), above. Show the distances between the corner as previously restored or reestablished and (1) the corner as restored or reestablished, and (2) to at least 2 of the witness monuments shown on the drawing in (d), above.

None

- (f) Was the corner restored through acceptance of (1) an obliterated evidence location, or, (2) a found perpetuated location?

A perpetuated location

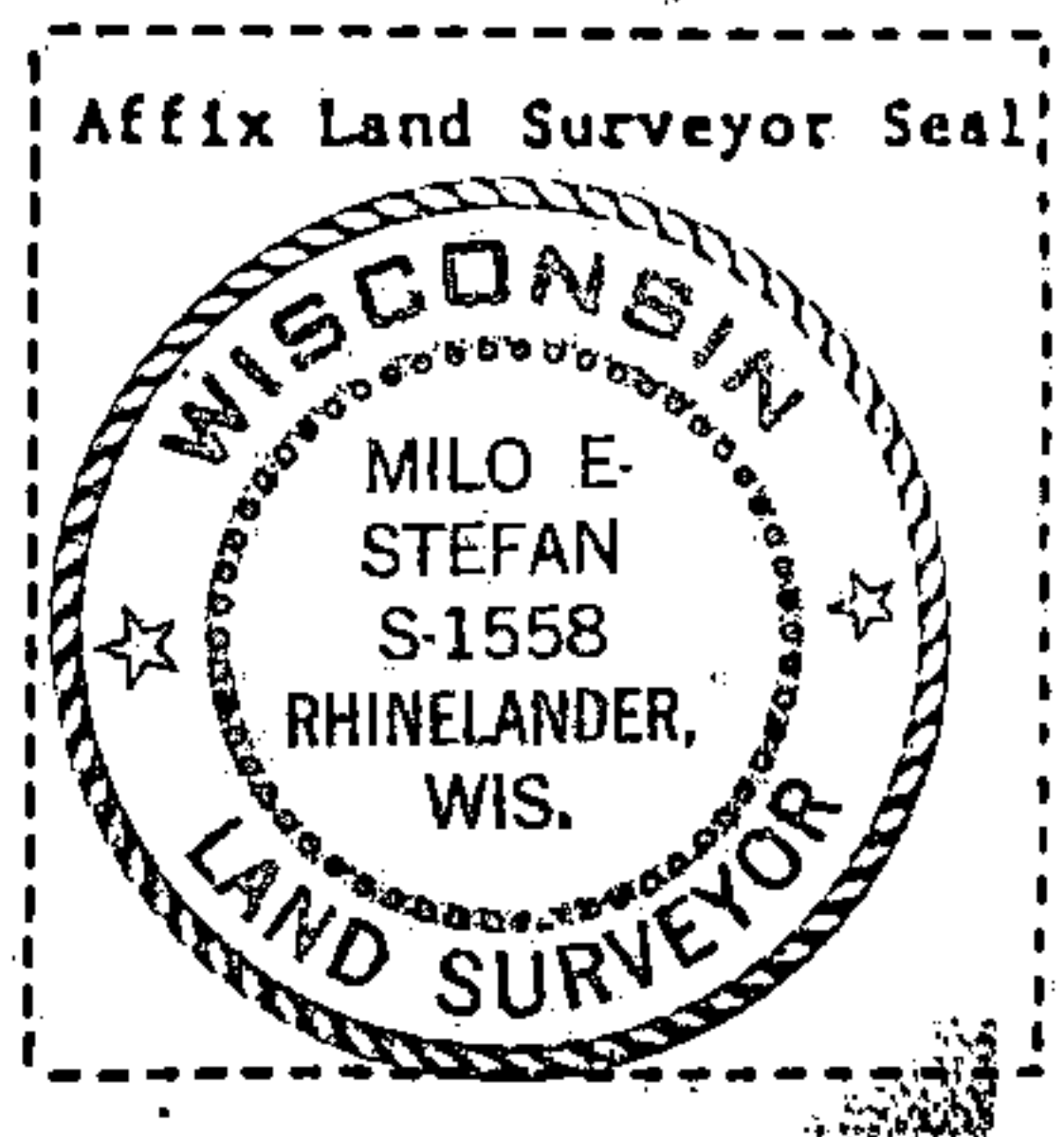
- (g) Was the corner reestablished through lost corner proportionate methods? If so, show the method, including the directions and distances to other public land survey corners used as evidence or used for proportioning in determining the corner location?

(1) Milo E. Stefan

(Type or print name) certify that the corner location shown on this record was determined by me or under my direction and control and that this U.S. Public Land Survey Monument Record is correct and complete to the best of my knowledge and belief.

Milo E. Stefan
Signature

July 7, 1989
Date



CERTIFICATE READY FOR FILING:

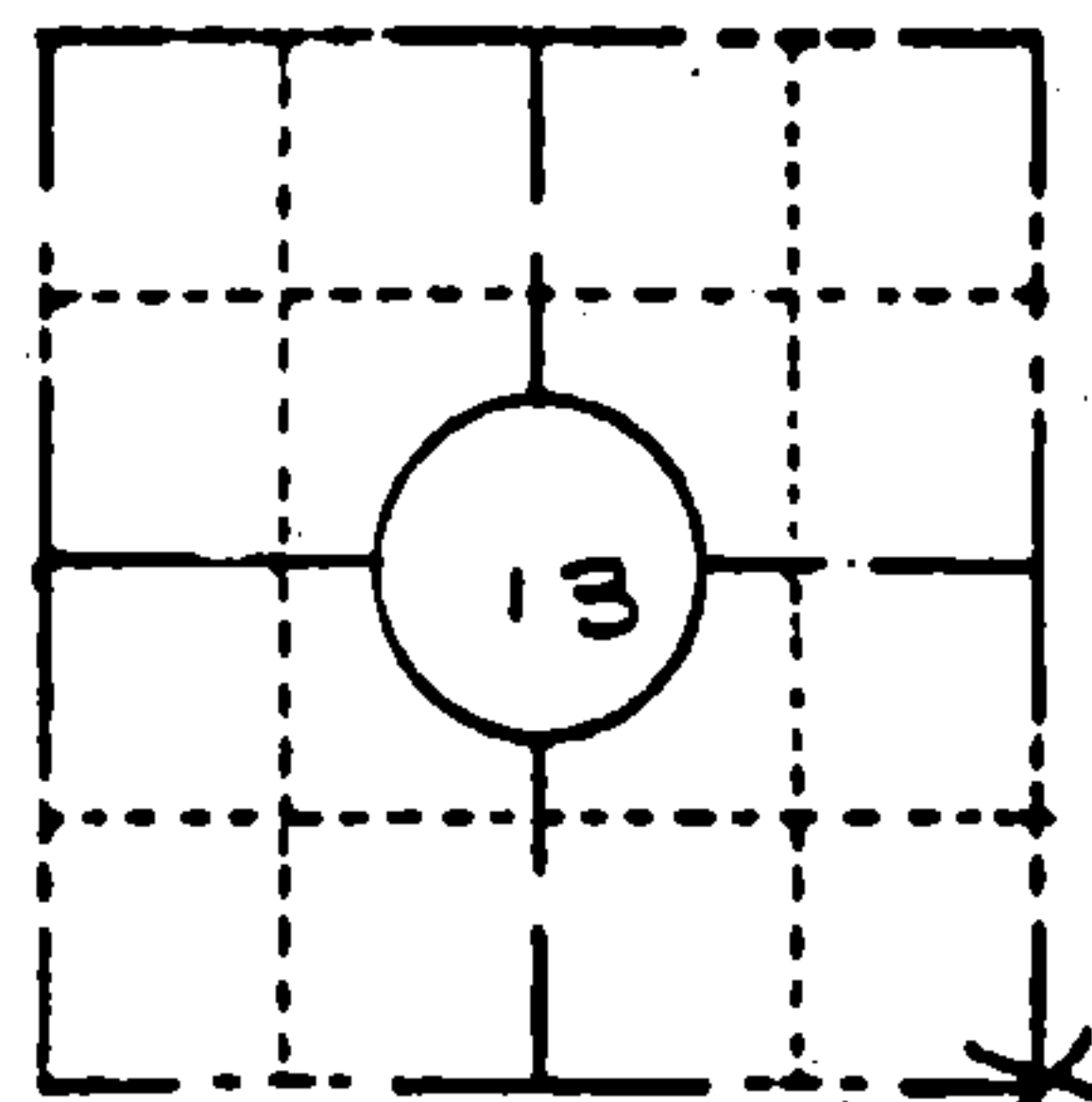
Dale B. Staege
District Ranger

ORIGINAL ON FILE IN CO CLERK'S OFFICE
COPY HERE FOR REFERENCE

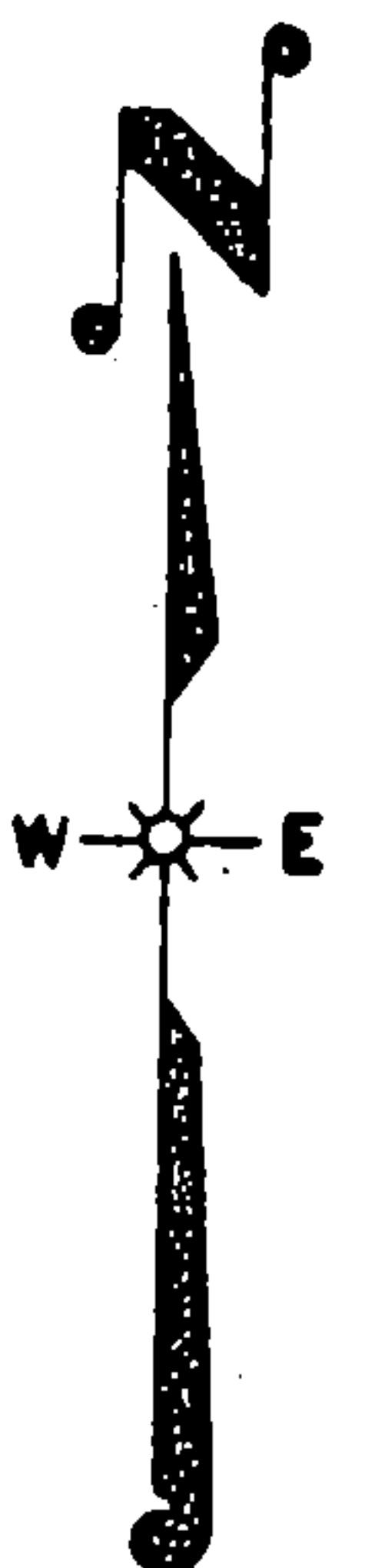
FIELD SURVEY NOTES
PRESERVATION OF LANDMARKS
(Pursuant to Section 59.635(7) Wisconsin Statutes
E-D-707-89

State of Wisconsin / Department of Transportation

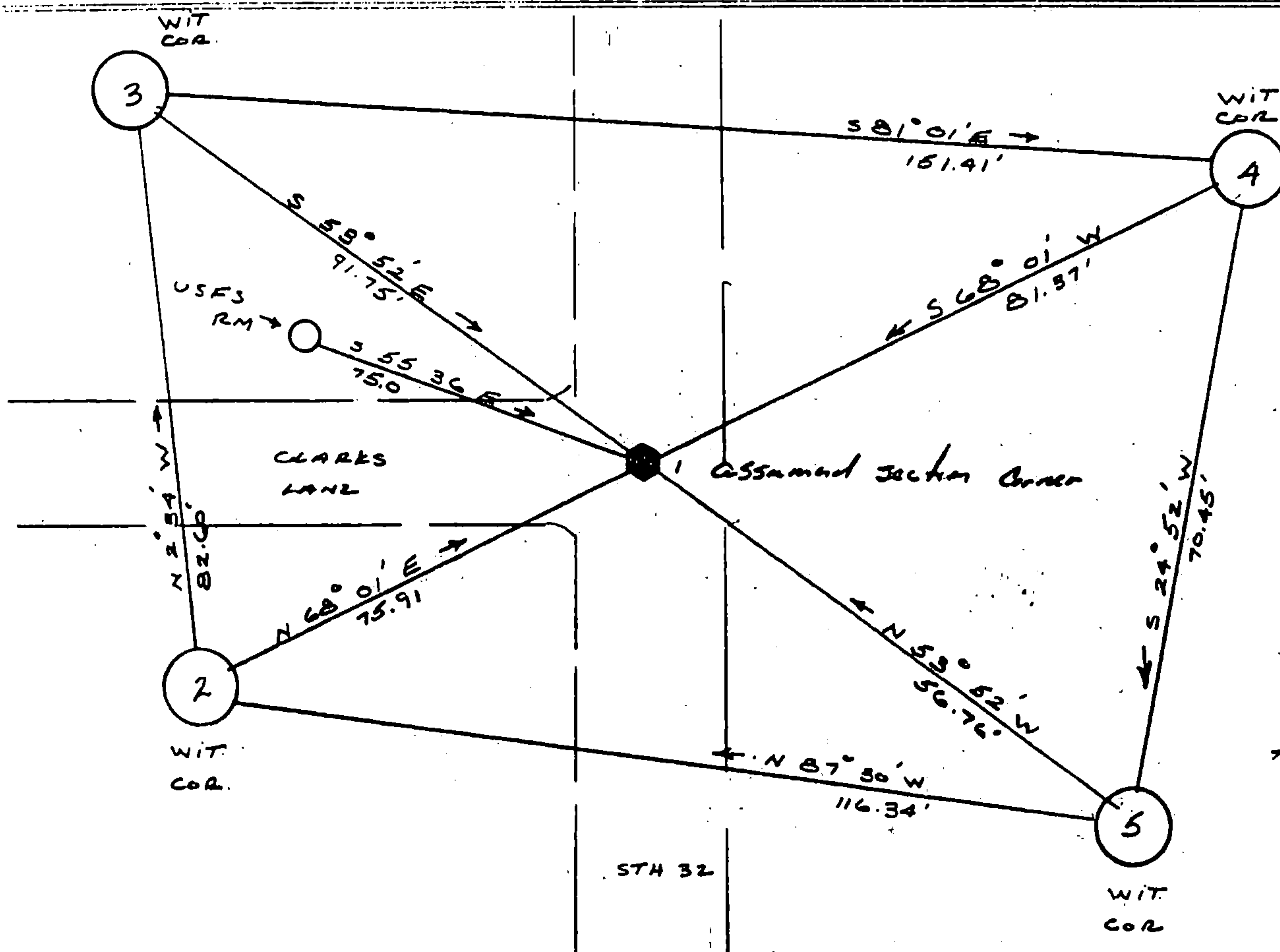
COUNTY		
FOREST		
TOWN		
LAONA, BLACKWELL, WABENO		
HIGHWAY		
STH 32		
SECTION	TOWNSHIP	RANGE
13	T 35 N	R 14 E
TYPE OF LANDMARK		
R.R. SPIKE SET BY USFS.		



LOCATION SKETCH
(Location of landmark indicated by "x")



This space for copy of field notes or ties to the above described landmarks



ALL WITNESS COR.
ARE DOT BEARINGS
DRIVEABLE MONUMENT
SET FLUSH WITH
GROUND & STAMPED
WITH BEARING
AND DISTANCE
TO CORNER.
BYS OR referenced
to STH 32 &

FILED UNDER PROJECT		
9131-03-70		
DISTRICT OFFICE NUMBER	CITY	COUNTY
03-07	RHINELANDER	ONEIDA
LOCATED OR ESTABLISHED BY		
NAME J R WALLIN		
TITLE SURVEY CREW CHIEF DATE 5-16-85		
under the direction of MICHAEL HESS JAW 809		

COUNTY CLERK'S OFFICE	
COUNTY OF Forest	WISCONSIN } 55
DATE RECEIVED FOR RECORD	DATE COPY SENT TO COUNTY SURVEYOR
7-10-85	N/A
SIGNATURE OF COUNTY CLERK	
Dora C. James	

PRESERVATION OF LANDMARKS

PAGE

43514130000

N-25