

245860

FILED ON:  
06/06/2025 03:37 PM  
CORTNEY BRITTEN CLEEREMAN  
REGISTER OF DEEDS  
FOREST COUNTY WI  
PAGES: 1

FOREST COUNTY U.S. PUBLIC LAND  
SURVEY MONUMENT LOCATION RECORD

☒ LANDMARK

☐ BENCHMARK

FOUND ☒

SET ☐

RESET ☒

RE-TIED ☒

CORNER IDENTITY: BERNTSEN SNM-1 STEEL NAIL MARKER

FOREST COUNTY COORDINATE: N: 550314.430  
E: 894187.470

ELEVATION-(FEET):      DATUM: NAD83 (2011)

WEATHER: PARTLY CLOUDY

DATE OF SURVEY: 8/9/2021      TEMPERATURE: 82 °F

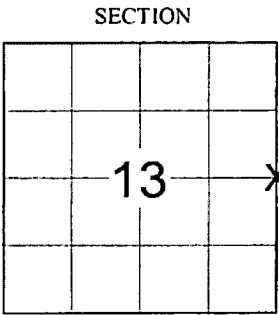
SURVEY PARTY: KEITH WALKOWSKI & COLLIN MARQUARDT

SECTION 13

TOWNSHIP 35 N

RANGE 14 E

LAONA  
CITY, VILLAGE, TOWN



LOCATION  
(Indicated By X)



CERTIFIED CORRECT:  
*Keith J. Walkowski*  
KEITH WALKOWSKI S-2717  
Registered Land Surveyor  
DATE: OCTOBER 18TH, 2021

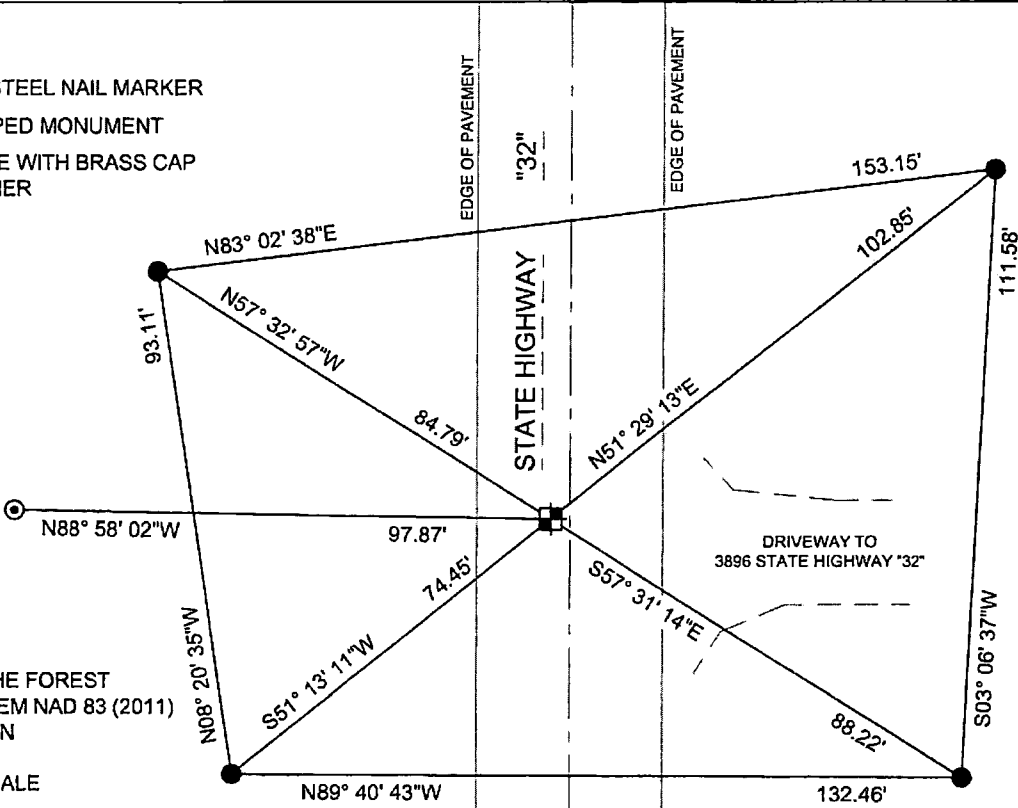
COMPANY RIVERSIDE LAND SURVEYING LLC

TIE SKETCH:

- ☒ - SET BERNTSEN SNM-1 STEEL NAIL MARKER
- - FOUND ALUMINUM CAPPED MONUMENT
- ⊙ - FOUND 2" O.D. IRON PIPE WITH BRASS CAP STAMPED 98.0' TO CORNER

BEARINGS ARE BASED ON THE FOREST  
COUNTY COORDINATE SYSTEM NAD 83 (2011)  
AND REFERENCED AS SHOWN

THIS DRAWING IS NOT TO SCALE



L-25  
NO.

L-25  
NO.

ORIGINAL ON FILE IN CO CLERK'S OFFICE  
COPY HERE FOR REFERENCE

FIELD SURVEY NOTES

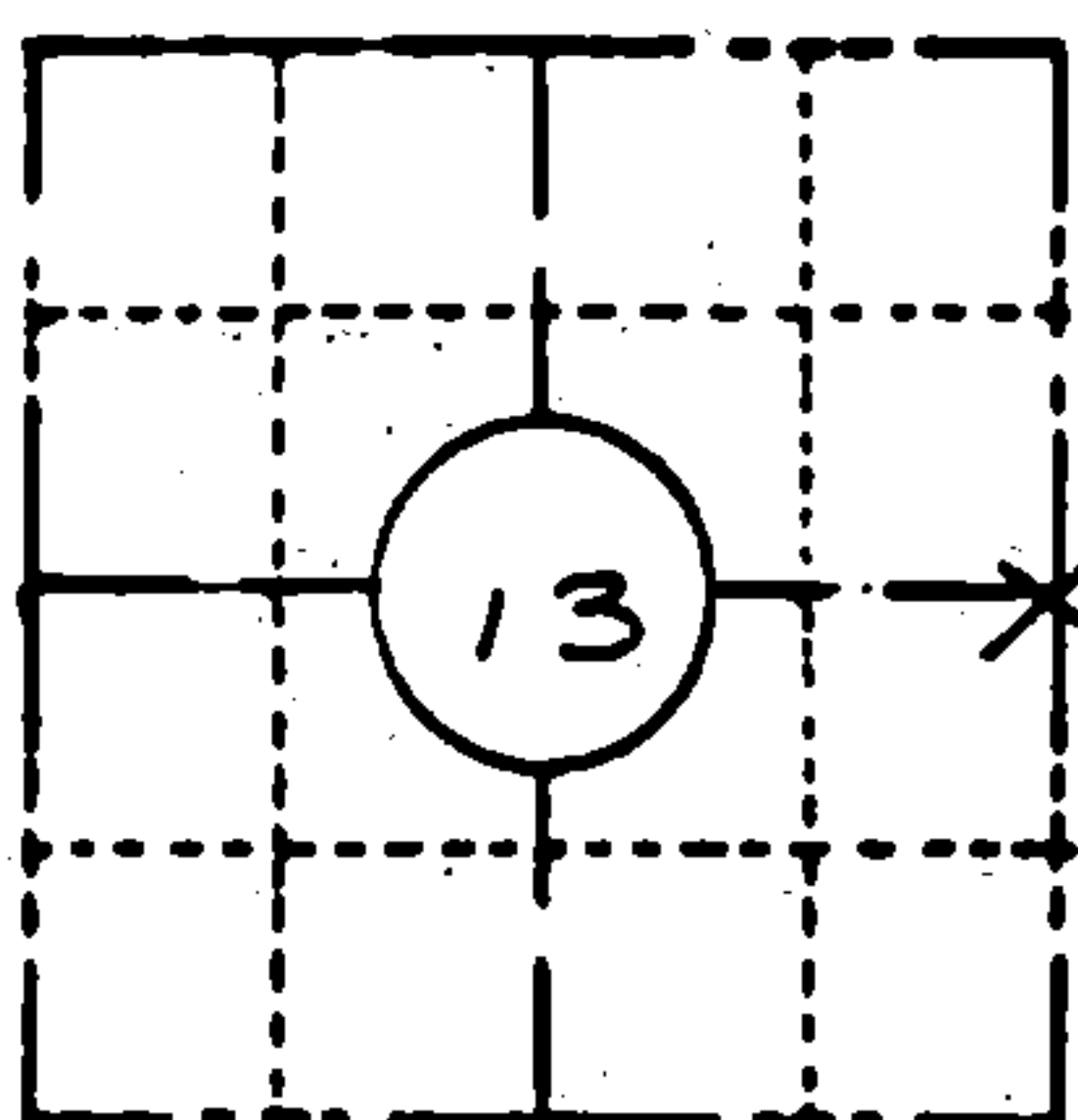
PRESERVATION OF LANDMARKS

(Pursuant to Section 59.635(7) Wisconsin Statutes

E-D-707-69

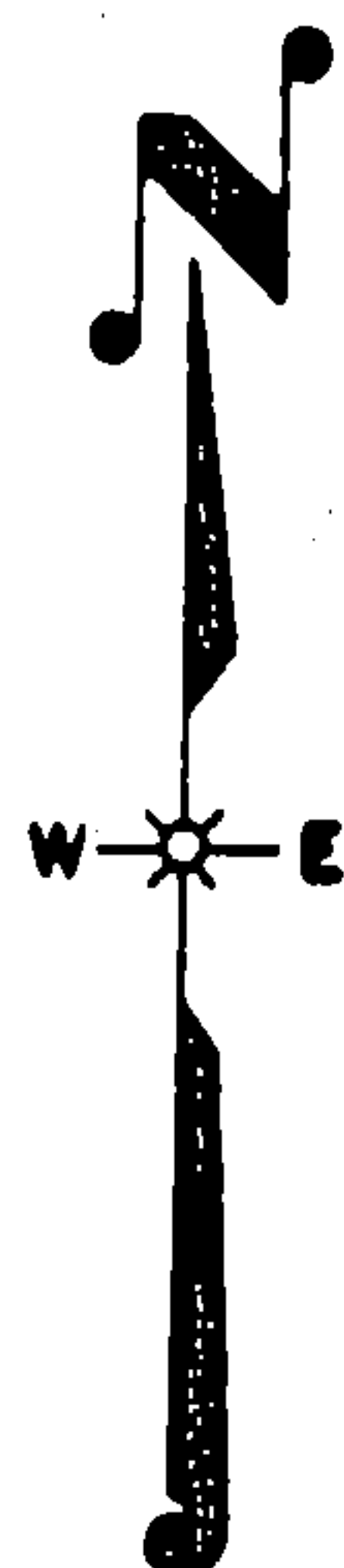
State of Wisconsin / Department of Transportation

COUNTY		
FOREST		
TOWN		
LAONA, BLACKWELL		
HIGHWAY		
STH 32		
SECTION	TOWNSHIP	RANGE
13	T 35 N	R 14 E
TYPE OF LANDMARK		
R.R. SPIKE SET BY USFS		



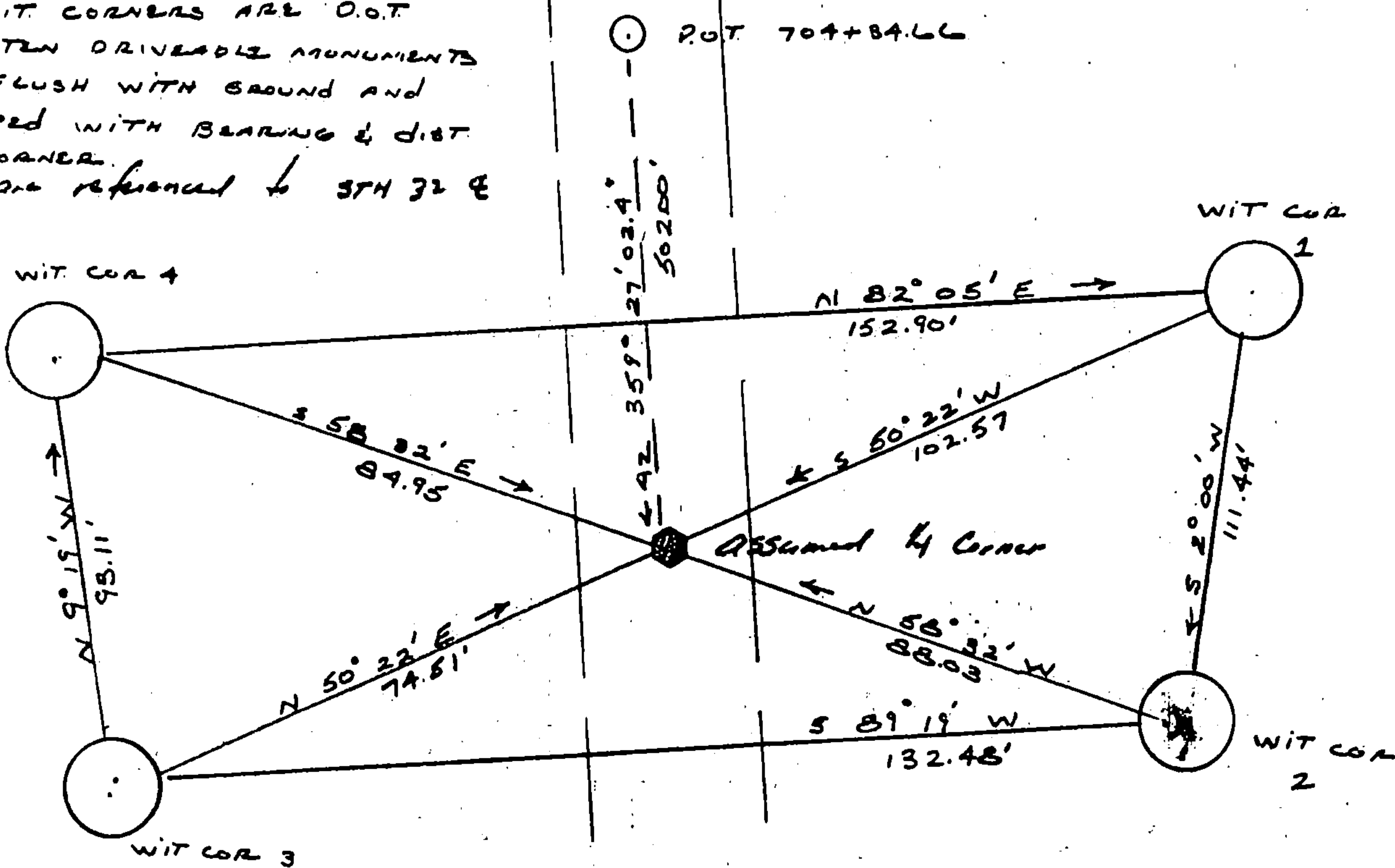
LOCATION SKETCH

(Location of landmark indicated by "x")



This space for copy of field notes or ties to the above described landmarks

ALL WIT CORNERS ARE O.O.T.  
BERNSTEIN DRIVEABLE MONUMENTS  
SET FLUSH WITH GROUND AND  
STAMPED WITH BEARING & DIST.  
TO CORNER.  
Brgs are referenced to STH 32 E



FILED UNDER PROJECT			COUNTY CLERK'S OFFICE	
9131-03-21			COUNTY OF Forest WISCONSIN } 55	
DISTRICT OFFICE NUMBER	CITY	COUNTY	DATE RECEIVED FOR RECORD	DATE COPY SENT TO COUNTY SURVEYOR
03-07	RHINELANDER	ONEIDA	7-10-85	N/A
LOCATED OR ESTABLISHED BY			SIGNATURE OF COUNTY CLERK	
NAME Robert B. Johnson			Dora C. James	
TITLE SURVEY CREW CHIEF DATE 5-14-85				
Under the direct supervision of MICHAEL HESS 504829				

138181

## U. S. PUBLIC LAND SURVEY MONUMENT RECORD.

## INSTRUCTIONS:

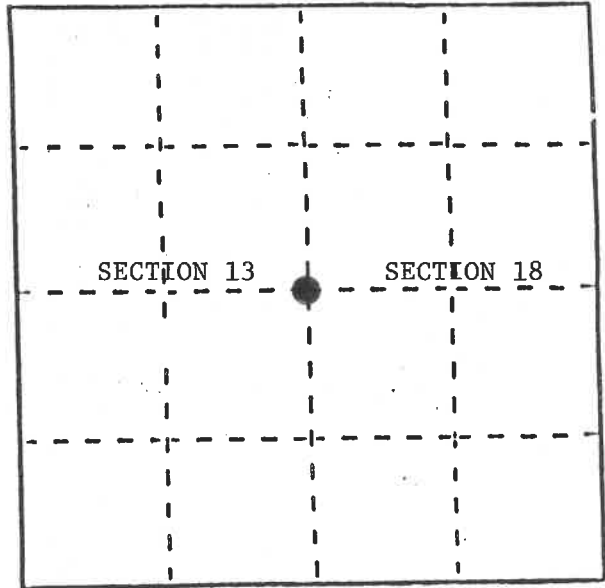
This record shall show the location of the corner and shall include all of the following nine elements (a through i).

- (a) Identify the corner by reference to the U.S. public land survey system.

● = Corner monument restored.

Quarter Corner to Sections 13 & 18,  
T35N, R14 and 15E, 4th P.M.

REGISTER'S OFFICE  
Forest County, Wis.  
Received for record this 16<sup>th</sup> day  
of Sept. A.D., 1989 at  
10:25 o'clock A. M. and recorded  
in Vol. 1-1 **CORNER RESTORATIONS**  
page 1  
*Paul H. Schenck*  
Register of Deeds



- (b) Describe any record evidence, monument evidence, occupational evidence, testimonial evidence or any other material evidence you considered, and whether the monument was found or placed.

In 1857 Artemas Curtis established this corner. All evidence being destroyed in the construction and reconstruction of State Highway #32 over the years, the last time in 1985.

In 1980 Forest Service surveyor William Cochrane restored this corner and placed a railroad spike in the highway and a reference monument N89°-00.3'W, 98.00 feet. He used this corner to subdivide Section 13, T35N, R14E.

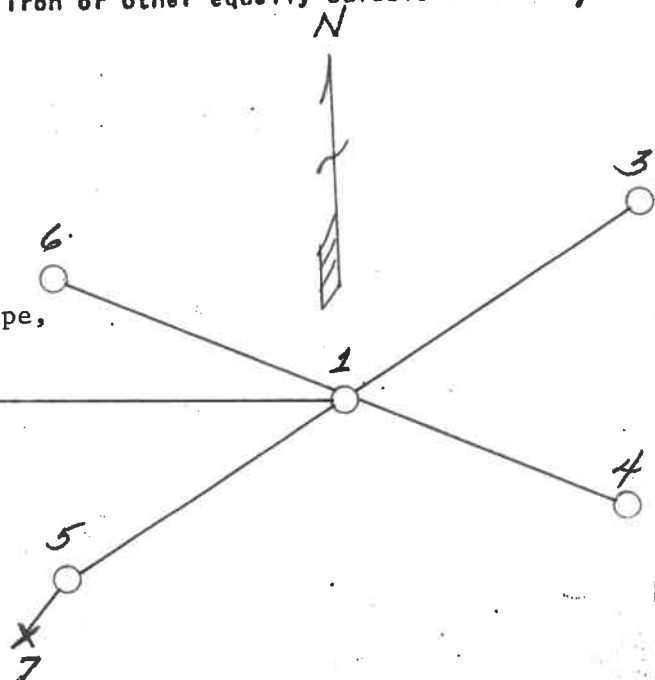
On 7/10/85, DOT filed with the County Clerk a "Preservation of Landmarks" form on the corner whereby four additional Witness Corners were established.

On 3/28/89 I placed a PK nail for corner and ran traverse to point and beyond. After confirmation that this position conforms to the survey to the west, I restored on 7/1/89 and placed a railroad spike in the surface of Highway #32 and placed a steel sign post SE of DOT W.C. #3, .63 feet.

- (c) In the plan view drawing below, provide reference ties to at least 4 witness monuments, or, if the location is within a municipality, to at least 2 witness monuments. (Witness monuments shall be made of concrete, natural stone, iron or other equally durable material.) Describe witness monuments.

- (d) Show a plan view drawing depicting the relevant monuments and reference ties which is sufficient in detail to enable accurate relocation of the corner monument if the corner monument is disturbed. Indicate north.

- 1) Railroad spike
- 2) Brass tablet on a 2" x 60" iron pipe, N89°-00.3'W, 98.00'
- 3) DOT Berntsen aluminum monument W.C. #1, N50°-22'E, 102.57'
- 4) DOT Berntsen aluminum monument, W.C. #2, S58°-32'E, 88.03'
- 5) DOT Berntsen aluminum monument, W.C. #3, S50°-22'W, 74.51'
- 6) DOT Berntsen aluminum monument, W.C. #4, N58°-32'W, 84.95'
- 7) Steel sign post, SE of DOT W.C. #3, .63'



43514132000

L-1

35-15

1-7

- (e) Describe any material discrepancy between the location of the corner as restored or reestablished and the location of that corner as previously restored or reestablished by distance and direction. Show the discrepancy on the plan view drawing under (d), above. Show the distances between the corner as previously restored or reestablished and (1) the corner as restored or reestablished, and (2) to at least 2 of the witness monuments shown on the drawing in (d), above.

None

- (f) Was the corner restored through acceptance of (1) an obliterated evidence location, or, (2) a found perpetuated location?

A perpetuated location.

- (g&h) Was the corner reestablished through lost corner proportionate methods? If so, show the method, including the directions and distances to other public land survey corners used as evidence or used for proportioning in determining the corner location?

- (i) 1. Milo E. Stefan  
(Type or print name) certify that the corner location shown on this record was determined by me or under my direction and control and that this U.S. Public Land Survey Monument Record is correct and complete to the best of my knowledge and belief.

Milo E. Stefan  
Signature

July 7, 1989  
Date



CERTIFICATE READY FOR FILING:

Dale B. Stage  
District Ranger