

245858

FILED ON:

06/06/2025 03:37 PM

CORTNEY BRITTEN CLEEREMAN

REGISTER OF DEEDS

FOREST COUNTY WI

PAGES: 1

FOREST COUNTY U.S. PUBLIC LAND SURVEY MONUMENT LOCATION RECORD

☒ LANDMARK ☐ BENCHMARK FOUND ☒
CORNER IDENTITY: BERNTSEN SNM-1 STEEL NAIL MARKER SET ☐
RESET ☒
RE-TIED ☒

FOREST COUNTY COORDINATE: N: 545055.640
E: 894179.266

ELEVATION-(FEET): _____ DATUM: NAD83 (2011)

WEATHER: CLOUDY

DATE OF SURVEY: 8/10/2021 TEMPERATURE: 89 °F

SURVEY PARTY: KEITH WALKOWSKI & COLLIN MARQUARDT

BASIS FOR MONUMENT LOCATION:

(DESCRIBE METHOD OF SURVEY AND CORNER AUTHENTICATION)

SEARCHED FOR THE EAST 1/4 CORNER AND FOUND AN SNM-1 STEEL NAIL MARKER AND FOUR ALUMINUM BERNTSEN STAMPED MONUMENTS, THESE ARE NOT SHOWN ON THE 1985 TIE SHEET BUT ARE THE SAME WITNESS MONUMENTS FOUND AT OTHER CORNERS ON STATE HIGHWAY "32". ACCEPTED THE SNM-1 STEEL NAIL MARKER AS THE CORNER AND RESET A BERNTSEN SNM-1 STEEL NAIL MARKER AT THE CORNER LOCATION UPON THE COMPLETION OF THE STATE HIGHWAY "32" RESURFACING PROJECT AND PERPETUATED THE CORNER LOCATION AS SHOWN BELOW.

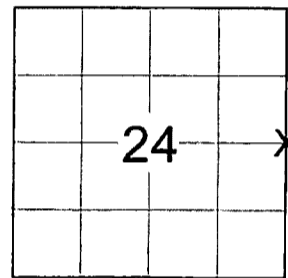
COMPANY RIVERSIDE LAND SURVEYING LLC

SECTION 24
TOWNSHIP 35 N
RANGE 14 E

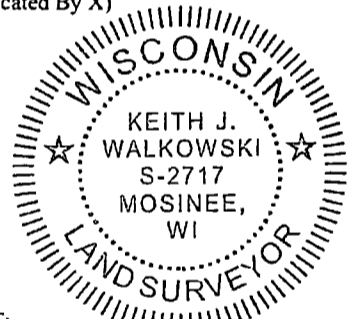
LAONA

CITY, VILLAGE, TOWN

SECTION



LOCATION
(Indicated By X)



CERTIFIED CORRECT:

Keith J. Walkowski

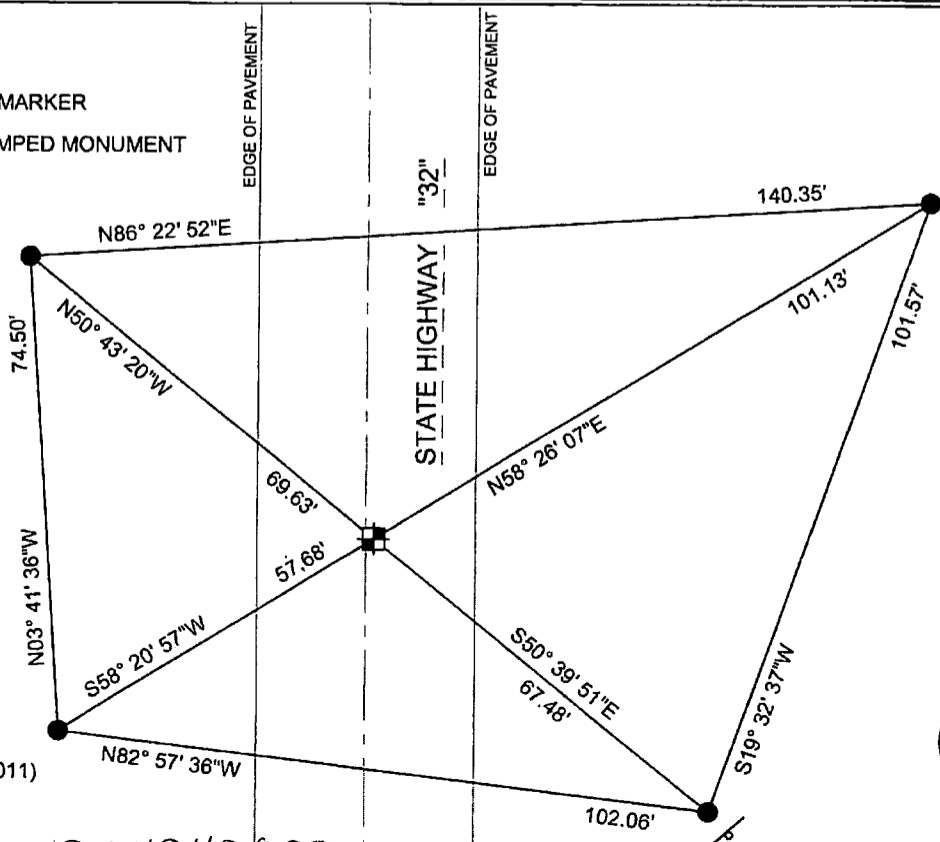
KEITH WALKOWSKI S-2717

Registered Land Surveyor

DATE: OCTOBER 18TH, 2021

TIE SKETCH:

- ☒ - SET BERNTSEN SNM-1 STEEL NAIL MARKER
● - FOUND ALUMINUM BERNTSEN STAMPED MONUMENT
— - EXISTING SIGN



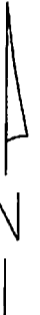
BEARINGS ARE BASED ON THE FOREST
COUNTY COORDINATE SYSTEM NAD 83 (2011)
AND REFERENCED AS SHOWN

THIS DRAWING IS NOT TO SCALE

43514242000

P-25

NO.



P-25

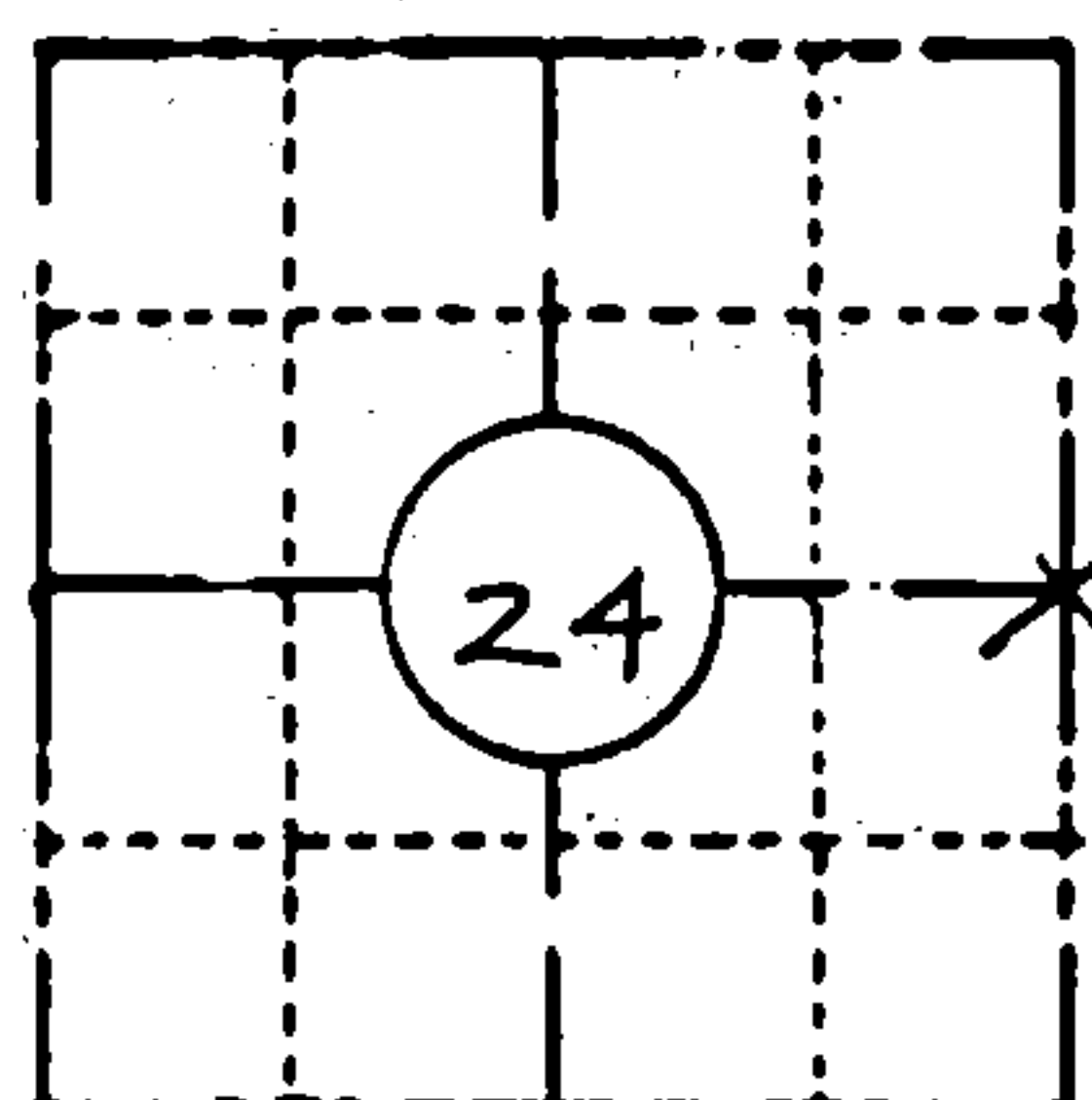
NO.

ORIGINAL ON FILE IN CO CLERK'S OFFICE
COPY HERE FOR REFERENCE

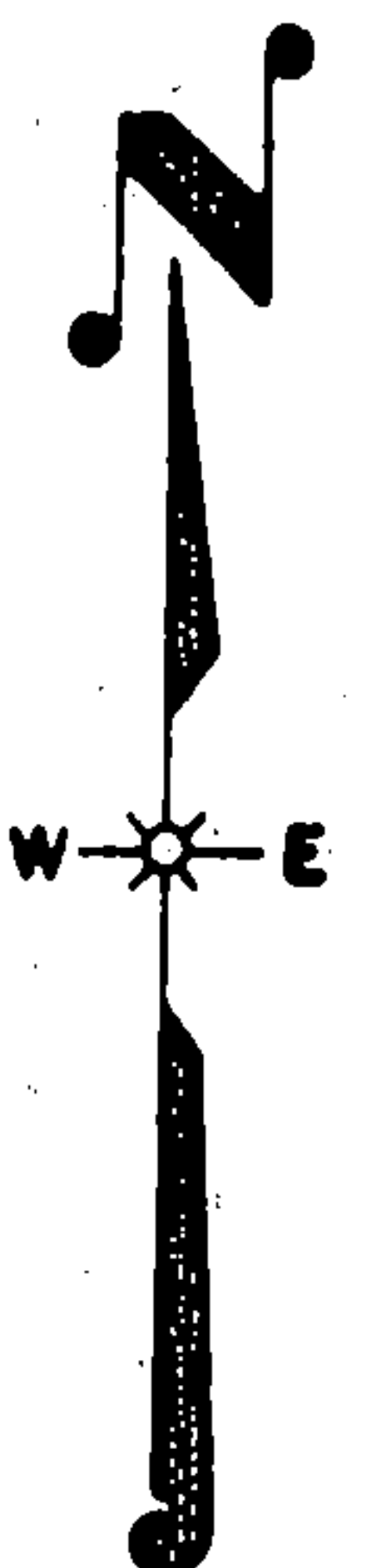
FIELD SURVEY NOTES
PRESERVATION OF LANDMARKS
(Pursuant to Section 59.635(7) Wisconsin Statutes
E-D-707-89

State of Wisconsin / Department of Transportation

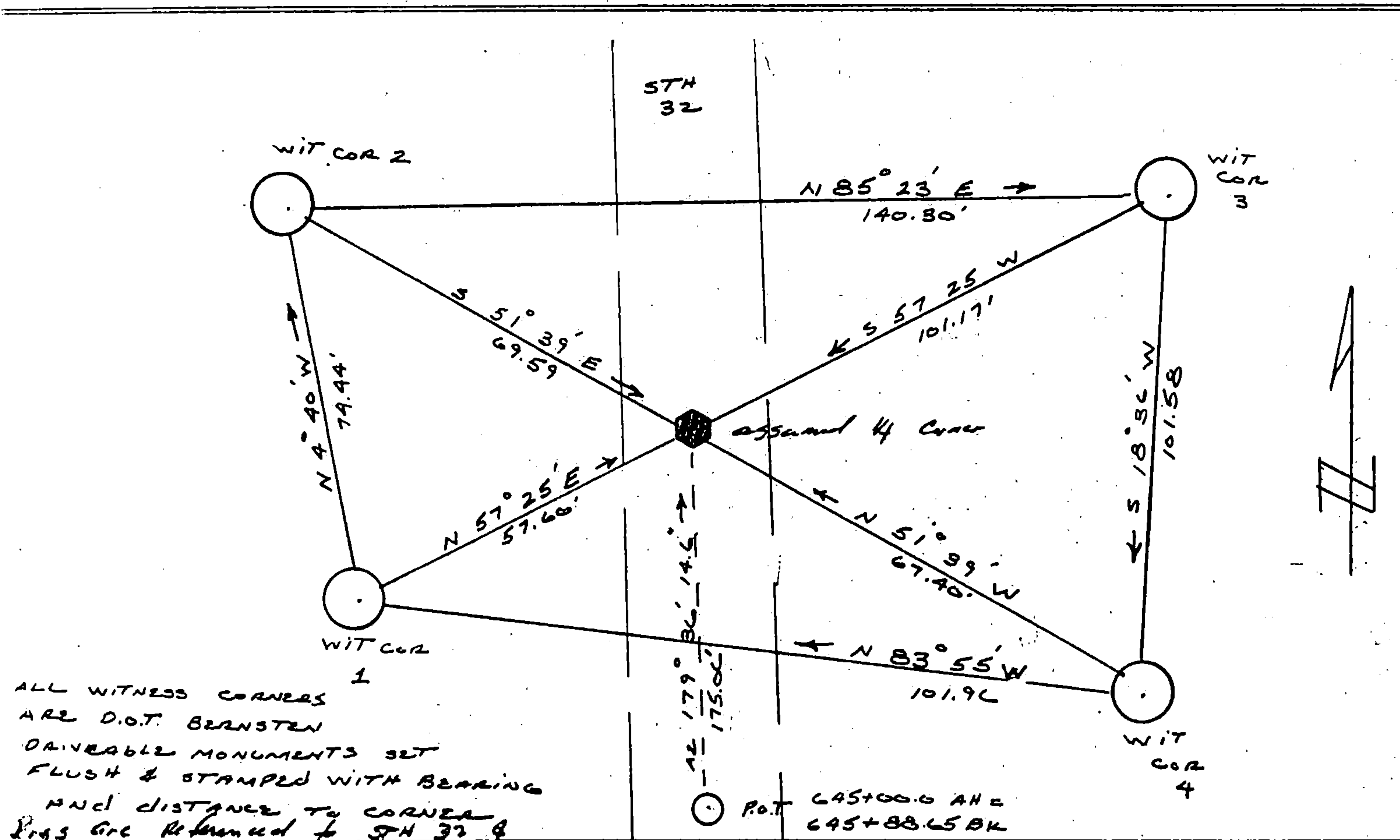
COUNTY		
FOREST		
TOWN		
LAONA, WABENO		
HIGHWAY		
STH 32		
SECTION	TOWNSHIP	RANGE
24	T 35 N	R 14 E
TYPE OF LANDMARK		
R.R. SPIKE SET BY USFS		



LOCATION SKETCH
(Location of landmark indicated by "x")



This space for copy of field notes or ties to the above described landmarks



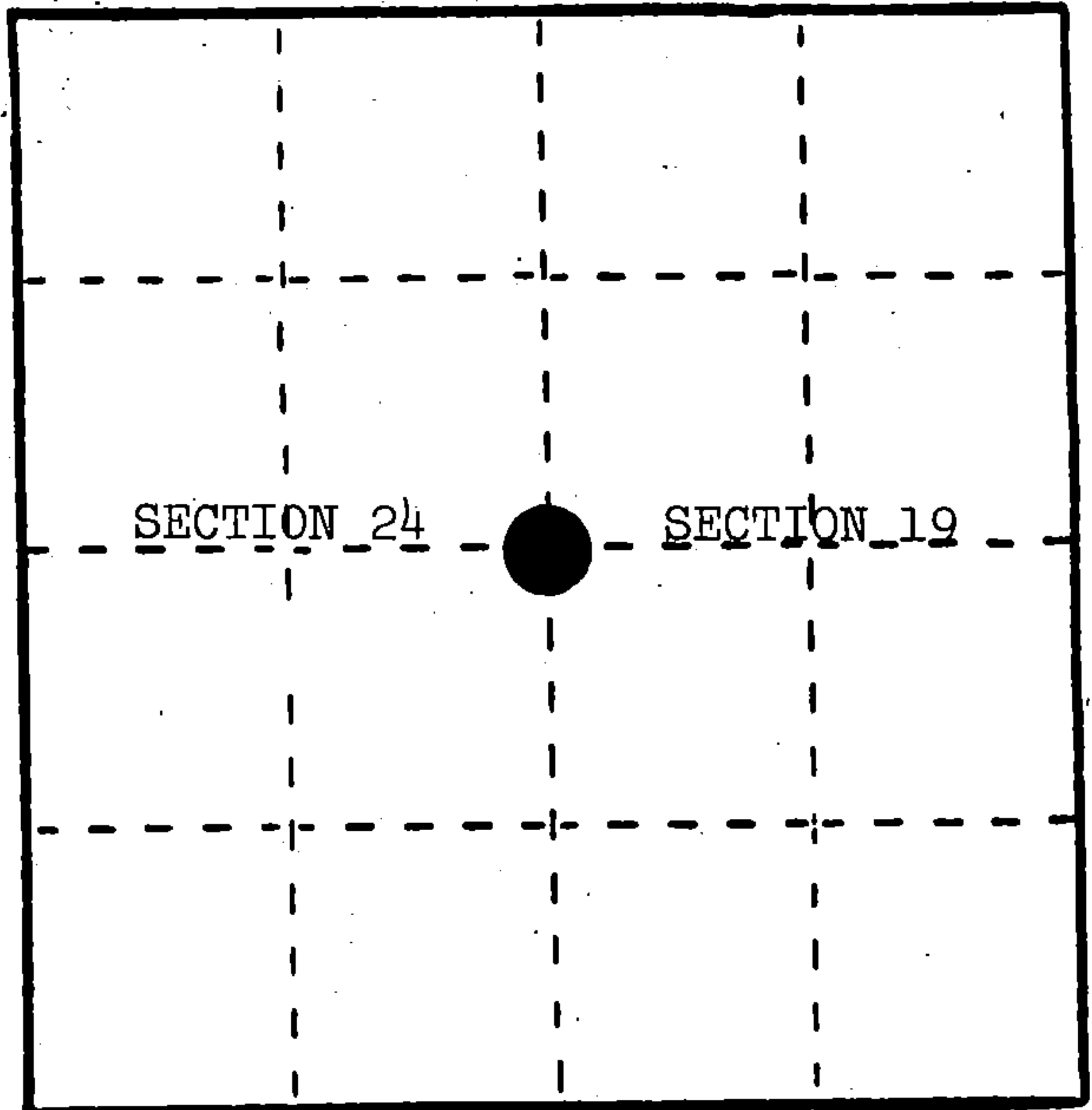
FILED UNDER PROJECT			COUNTY CLERK'S OFFICE	
9131-03-70			COUNTY OF Forest WISCONSIN } 85	
DISTRICT OFFICE NUMBER	CITY	COUNTY	DATE RECEIVED FOR RECORD	DATE COPY SENT TO COUNTY SURVEYOR
03-07	RHINELANDER	ONEIDA	7-10-85	N/A
LOCATED OR ESTABLISHED BY			SIGNATURE OF COUNTY CLERK	
NAME ROBERT B. JOHNSON			Dora C. James	
TITLE SURVEY CREW CHIEF DATE 5-15-85				
Under the direct supervision of MICHAEL HESS 500809				

U. S. PUBLIC LAND SURVEY MONUMENT RECORD

INSTRUCTIONS: This record shall show the location of the corner and shall include all of the following nine elements (a through i).

- (a) Identify the corner by reference to the U.S. public land survey system.
 ○ = Corner monument restored.

Quarter corner to Sections 19 and 24, T.35N., R.14E.



- (b) Describe any record evidence, monument evidence, occupational evidence, testimonial evidence or any other material evidence you considered, and whether the monument was found or placed.

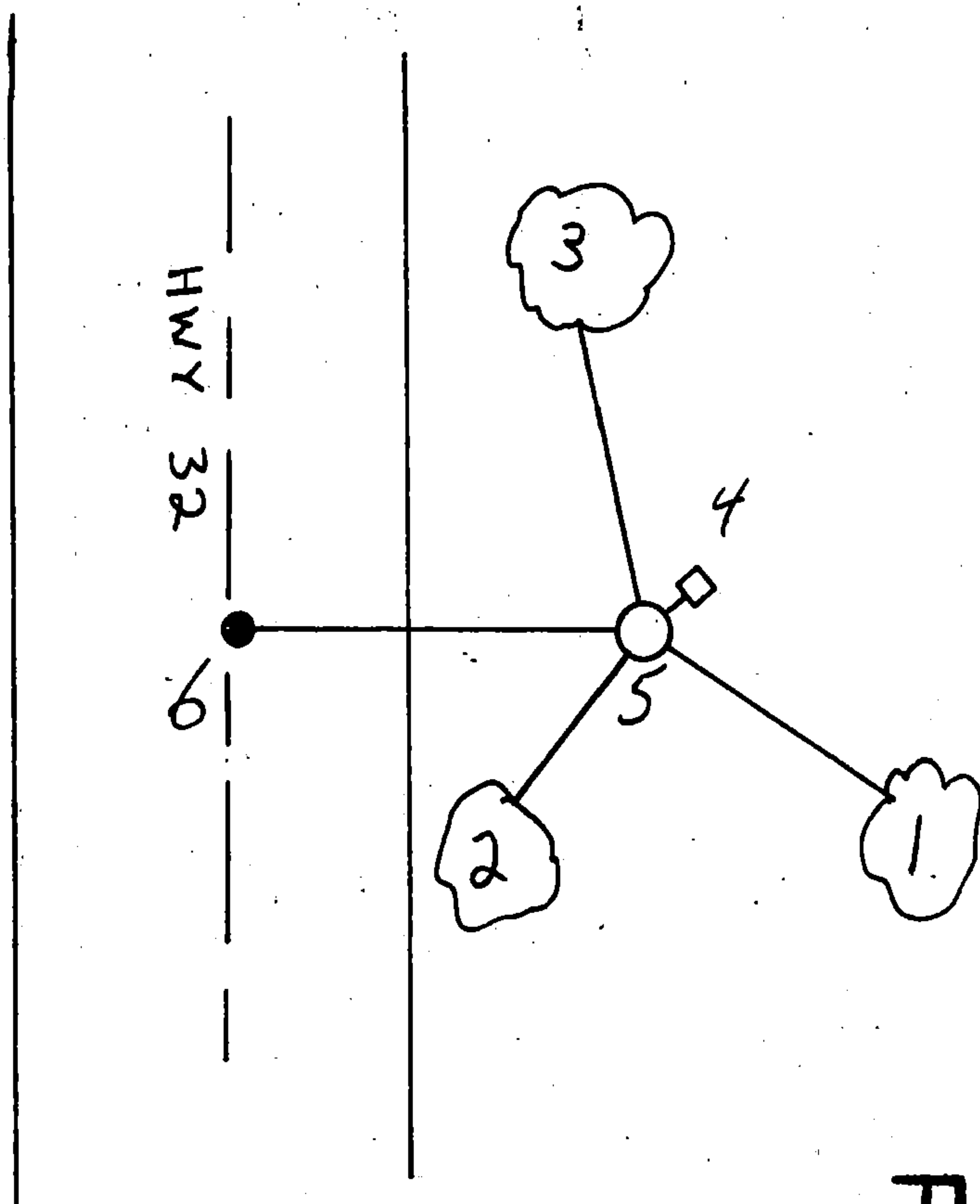
In 1857, Alfred Millard set $\frac{1}{4}$ section post with the following BTs: Hemlock, 24", N.42°E., 35 links; Sugar, 26", S.84°W., 22 links.

September 22, 1981, Milo Stefan placed a railroad spike at the position for the $\frac{1}{4}$ corner .95' east of centerline of Highway 32. Referenced by a 2" x 36" aluminum monument, 50.00', east.

- (c) In the plan view drawing below, provide reference ties to at least 4 witness monuments, or, if the location is within a municipality, to at least 2 witness monuments. (Witness monuments shall be made of concrete, natural stone, iron or other equally durable material.)
 Describe witness monuments.

- (d) Show a plan view drawing depicting the relevant monuments and reference ties which is sufficient in detail to enable accurate relocation of the corner monument if the corner monument is disturbed. Indicate north.

1. Red Maple, 7", S.54°E., 35.20'
2. Basswood, 8", S.39°W., 22.72'
3. Red Oak, 12", N.9°W., 41.20'
4. Steel Sign Post, Northeast, 1.8'
5. 2" x 36" aluminum reference monument stamped to identify the corner.
6. Railroad spike.



REGISTER'S OFFICE }
 Forest County, Wis. }

Received for record this 21st day
 of January, 1985 at
11:00 o'clock A.M. and

recorded in Vol. CORNER RESTORATIONS

on page P. 25
Paul Aschenbrenner
 REGISTER

(e) Describe any material discrepancy between the location of the corner as restored or reestablished and the location of that corner as previously restored or reestablished by distance and direction. Show the discrepancy on the plan view drawing under (d), above. Show the distances between the corner as previously restored or reestablished and (1) the corner as restored or reestablished, and (2) to at least 2 of the witness monuments shown on the drawing in (d), above.

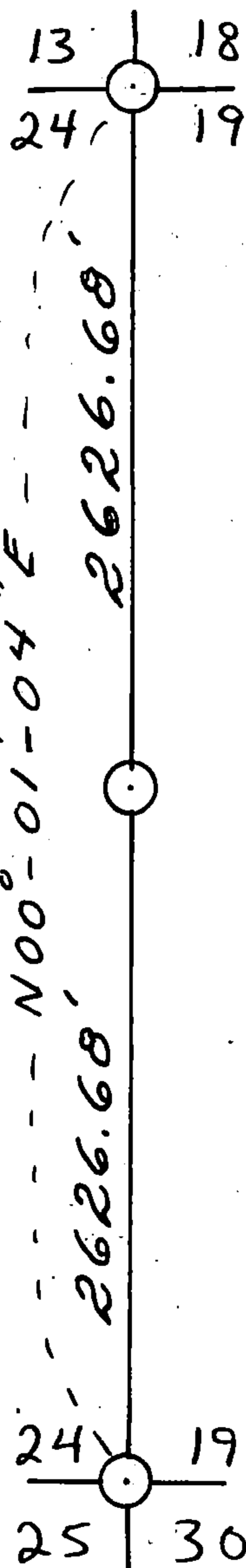
None.

(f) Was the corner restored through acceptance of (1) an obliterated evidence location, or, (2) a found perpetuated location?

No.

(g&h) Was the corner reestablished through lost corner proportionate methods? If so, show the method, including the directions and distances to other public land survey corners used as evidence or used for proportioning in determining the corner location?

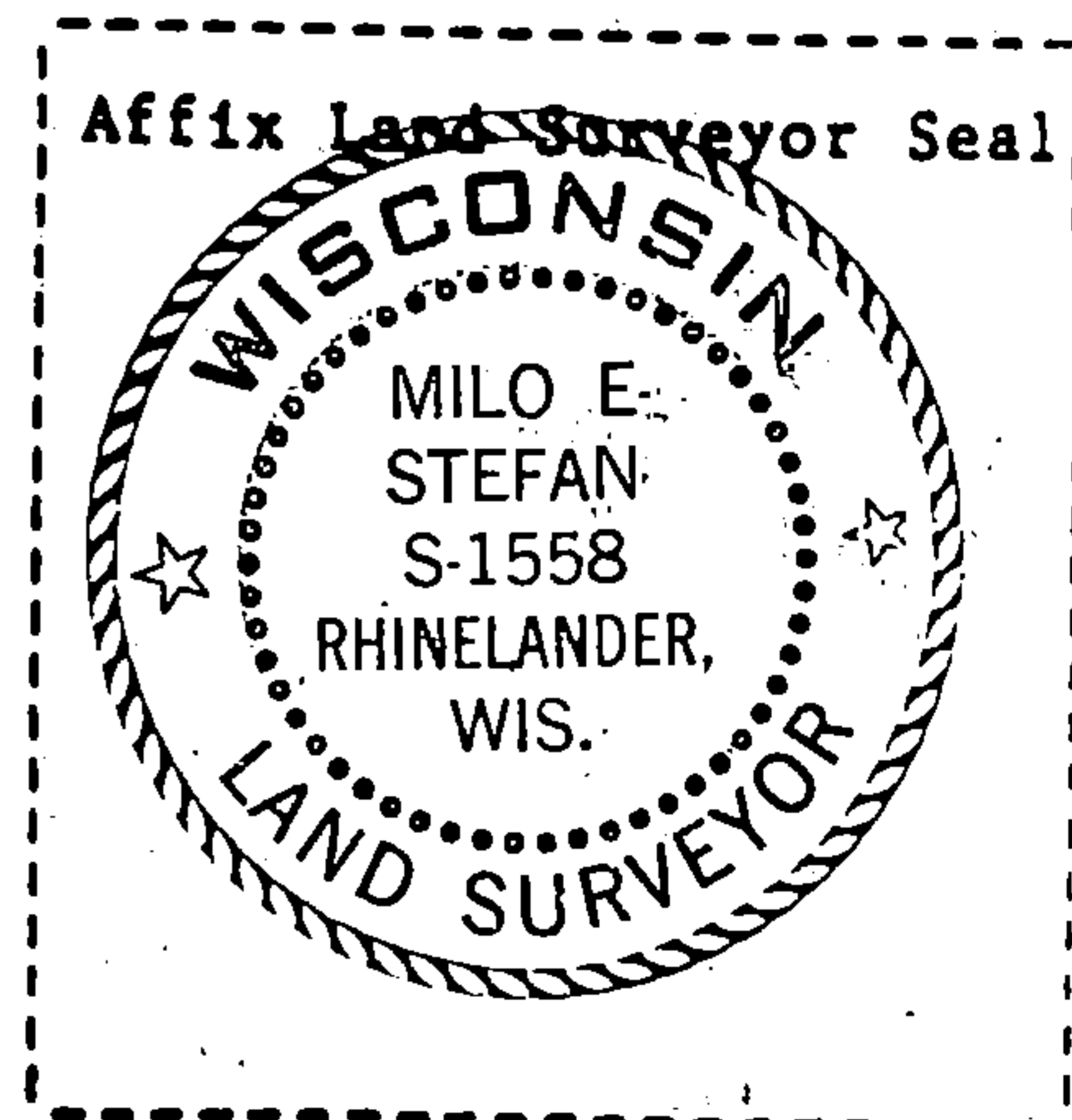
Yes. Corner restored by lost methods--single proportionate method from $\frac{1}{2}$ mile north and $\frac{1}{2}$ mile south.



(1) Milo E. Stefan
(Type or print name) certify that the corner location shown on this record was determined by me or under my direction and control and that this U.S. Public Land Survey Monument Record is correct and complete to the best of my knowledge and belief.

Milo E. Stefan
Signature

12/20/84
Date



232164

FOREST COUNTY, WI
CORTNEY BRITTON CLEEREMAN
REGISTER OF DEEDS
RECEIVED FOR RECORD

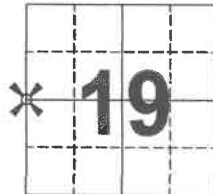
OCT 23 2020

Time: 9:00 AM
Vol.: Corner Restoration
Page Number: P-1

U.S. PUBLIC LAND SURVEY MONUMENT RECORD
FOREST COUNTY

TYPE OF MONUMENT: BERNTSEN STEEL SURVEY MARKER NAIL
WISCONSIN COUNTY COORDINATE SYSTEM (FOREST)
DATUM: NAD 83 (2011 ADJUSTMENT)
NORTHING 545055.725
EASTING 894179.176
DRAWN BY: ANDREW HUNTER

SECTION 19
TOWN 35 NORTH
RANGE 15 EAST



BASIS FOR MONUMENT LOCATION

HISTORY OF ORIGINAL CORNER ESTABLISHMENT AND SUBSEQUENT RESTORATIONS
AND DESCRIPTION OF ANY RECORD, MONUMENT, OCCUPATIONAL, TESTIMONIAL
OR OTHER EVIDENCE CONSIDERED:

SEE PREVIOUS TIE SHEET PREPARED BY
MILO E. STEFAN DATED JULY 7, 1989 FOR
MONUMENT HISTORY.

I COMPLETED A FIELD SURVEY PRIOR TO HIGHWAY
CONSTRUCTION ALONG S.T.H. "32" AND FOUND A R.R.
SPIKE IN ASPHALT AS CALLED FOR.

THIS MONUMENT FIT WELL WITH THE 4 EXISTING
WITNESS MONUMENTS AND THE PUBLISHED COUNTY
COORDINATES, AND WAS ACCEPTED AS THE TRUE
CORNER LOCATION. I SET A BERNTSEN STEEL SURVEY
MARKER NAIL, AND VERIFIED EXISTING WITNESS TIES
AFTER CONSTRUCTION WAS COMPLETED.

SEAL:



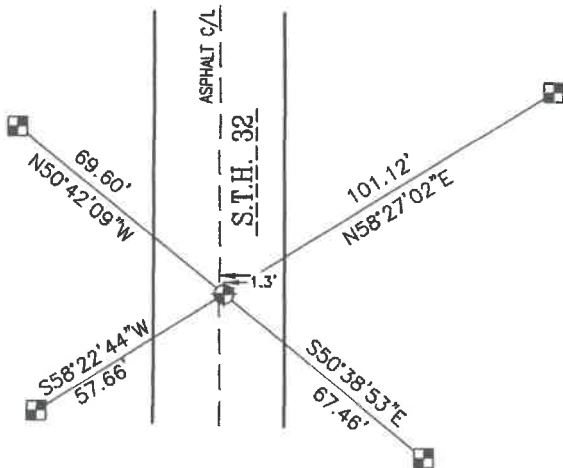
CERTIFIED CORRECT:

Andrew L. Hunter
PROFESSIONAL LAND SURVEYOR

DATE OCTOBER 15, 2020

TIE SKETCH

SHOW AT LEAST FOUR TIES, ALSO FENCE LINES, ROADS, TOPO, SIZE AND TYPE OF WITNESS TREES AND ANY OTHER
PERTINENT SITE DETAILS. IF OFF THE ROAD, THE BEST WAY TO ARRIVE AT THE CORNER.



FOUND DOT BERNTSEN
ALUMINUM MONUMENT

SET BERNTSEN STEEL SURVEY MARKER NAIL



SCALE 1"=50'

43514242000

P-1

DOCUMENT NUMBER

138189

U. S. PUBLIC LAND SURVEY MONUMENT RECORD.

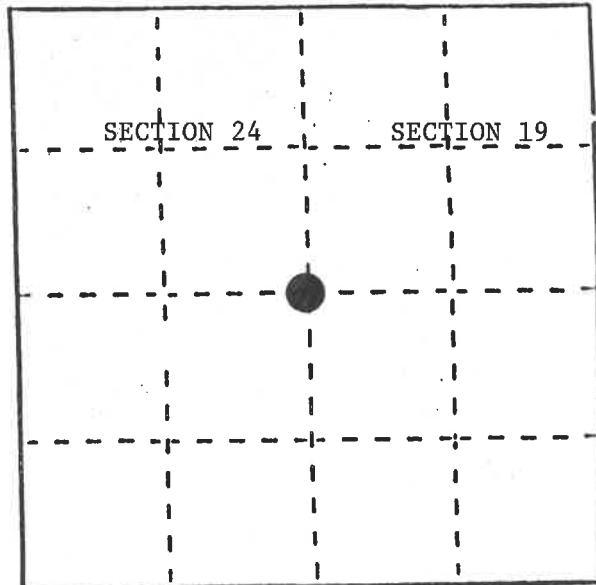
INSTRUCTIONS:

This record shall show the location of the corner and shall include all of the following nine elements (a through i).

- (a) Identify the corner by reference to the U.S. public land survey system.

● - Corner monument restored.

Quarter Corner to Sections 24 & 19,
T35N, R14-15E, 4th P.M.



REGISTER'S OFFICE
Forest County, Wis.
Received for record this 16 day
of Sept, A.D., 1989 at
10:25 o'clock A.M. and recorded
in Vol. P-1 **CORNER RESTORATIONS**
page 1
Paul Aschenbrenner
Register of Deeds

- (b) Describe any record evidence, monument evidence, occupational evidence, testimonial evidence or any other material evidence you considered, and whether the monument was found or placed.

In 1857 Artemas Curtis established this corner. All evidence being destroyed by construction and reconstruction of State Highway #32 over the years, the last time in 1985.

In 1981 I restored this corner by lost methods. I placed a railroad spike in the highway for the corner and established a reference monument 50.00 feet east. This all being destroyed by the 1985 construction.

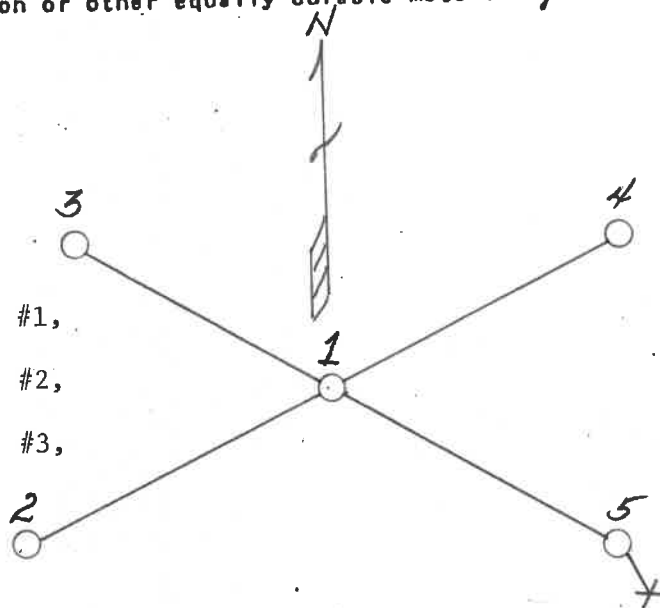
On 7/10/85 the DOT filed with the County Clerk a "Preservation of Landmark" form whereby four Witness Corners were established.

On 3/28/89 we found the Witness Corners and set a PK nail in surface of highway for the corner. We ran a traverse to this point to confirm the position. I returned on 6/28/89 and replaced the PK nail with a railroad spike and set a steel sign post SE of DOT W.C. #4, .77 feet.

- (c) In the plan view drawing below, provide reference ties to at least 4 witness monuments, or, if the location is within a municipality, to at least 2 witness monuments. (Witness monuments shall be made of concrete, natural stone, iron or other equally durable material.)
Describe witness monuments.

- (d) Show a plan view drawing depicting the relevant monuments and reference ties which is sufficient in detail to enable accurate relocation of the corner monument if the corner monument is disturbed. Indicate north.

- 1) Railroad spike
- 2) DOT Berntsen aluminum monument, W.C. #1, S57°-25'W, 57.66'
- 3) DOT Berntsen aluminum monument, W.C. #2, N51°-39'W, 69.59'
- 4) DOT Berntsen aluminum monument, W.C. #3, N57°-25'E, 101.17'
- 5) DOT Berntsen aluminum monument, W.C. #4, S51°-39'E, 67.40'
- 6) Steel sign post, SE of DOT W.C. #4, .77'



43514242000

SEE ALSO P-25 34-15

P-1

1-1

- (e) Describe any material discrepancy between the location of the corner as restored or reestablished and the location of that corner as previously restored or reestablished by distance and direction. Show the discrepancy on the plan view drawing under (d), above. Show the distances between the corner as previously restored or reestablished and (1) the corner as restored or reestablished, and (2) to at least 2 of the witness monuments shown on the drawing in (d), above.

None

- (f) Was the corner restored through acceptance of (1) an obliterated evidence location, or, (2) a found perpetuated location?

A perpetuated location

- (g&h) Was the corner reestablished through lost corner proportionate methods? If so, show the method, including the directions and distances to other public land survey corners used as evidence or used for proportioning in determining the corner location?

- (i) I, Milo E. Stefan
(Type or print name) certify that the corner location shown on this record was determined by me or under my direction and control and that this U.S. Public Land Survey Monument Record is correct and complete to the best of my knowledge and belief.

Milo E. Stefan
Signature

July 7, 1989
Date



CERTIFICATE READY FOR FILING:

Dale S. Stange
District Ranger