

245855

FILED ON:

06/06/2025 03:37 PM

CORTNEY BRITTEN CLEEREMAN

REGISTER OF DEEDS

FOREST COUNTY WI

PAGES: 1

FOREST COUNTY U.S. PUBLIC LAND
SURVEY MONUMENT LOCATION RECORD

☒ LANDMARK ☐ BENCHMARK
CORNER IDENTITY: BERNTSEN SNM-1 STEEL NAIL MARKER
FOREST COUNTY COORDINATE: N: 531911.500
E: 894202.748
ELEVATION-(FEET): DATUM: NAD83 (2011)
WEATHER: SUNNY
DATE OF SURVEY: 8/12/2021 TEMPERATURE: 75 °F
SURVEY PARTY: KEITH WALKOWSKI & LAUREN WINCENTSEN

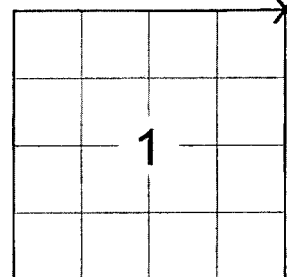
FOUND ☐
SET ☐
RESET ☒
RE-TIED ☒

SECTION 1
TOWNSHIP 34 N
RANGE 14 E

FREEDOM

CITY, VILLAGE, TOWN

SECTION

LOCATION
(Indicated By X)

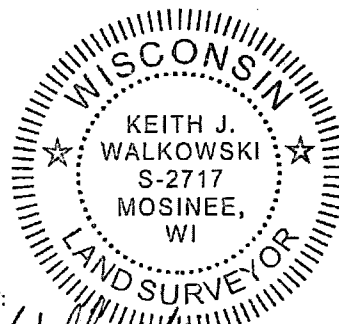
A-25

NO.

BASIS FOR MONUMENT LOCATION:

(DESCRIBE METHOD OF SURVEY AND CORNER AUTHENTICATION)

SEARCHED FOR THE NORTHEAST CORNER AND COULD NOT FIND A CORNER MONUMENT BUT DID FIND 3 TIES FROM THE RECORD 1985 TIE SHEET. INTERSECTED THE TIES AND SET A BERNTSEN SNM-1 STEEL NAIL MARKER UPON COMPLETION OF THE STATE HIGHWAY "32" RESURFACING PROJECT. SET AN ADDITIONAL TIE TO THE NORTHWEST TO PERPETUATE THE CORNER LOCATION AS SHOWN BELOW.



CERTIFIED CORRECT:

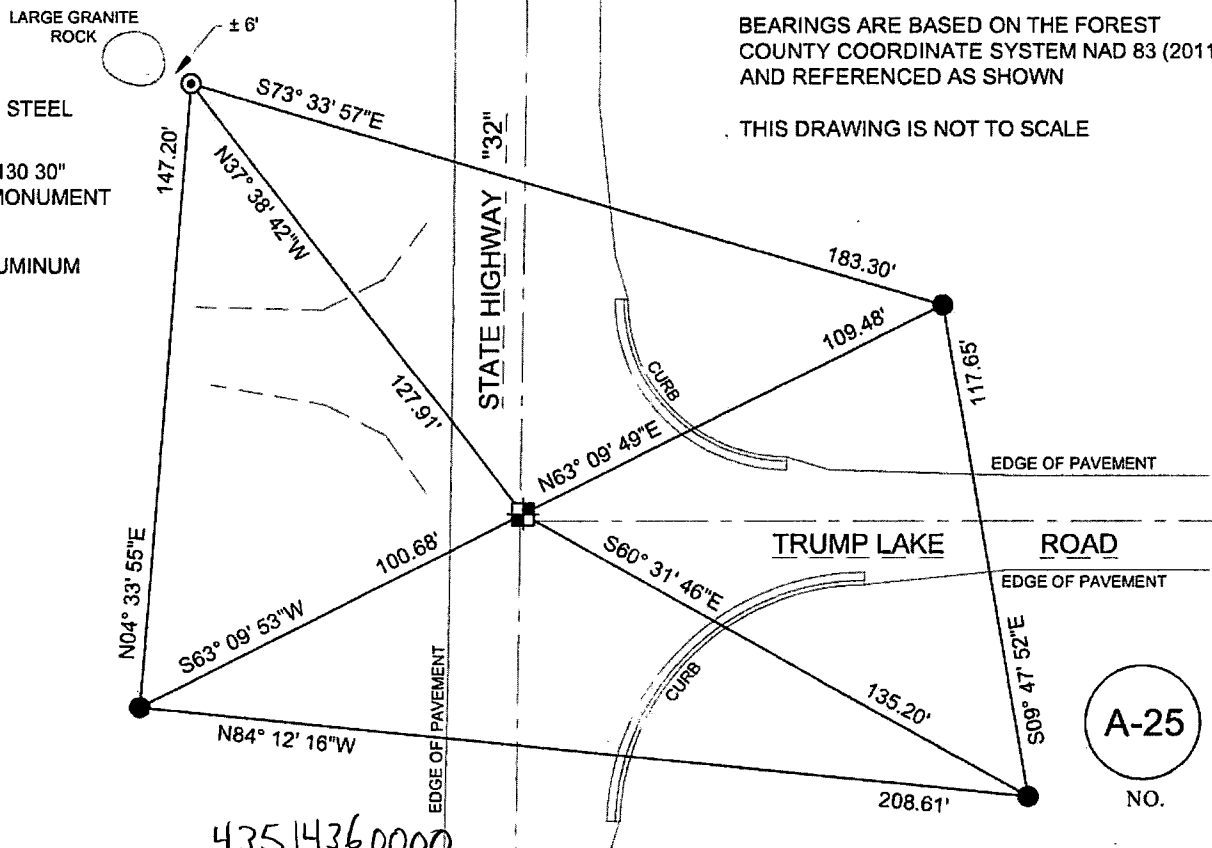
KEITH WALKOWSKI S-2717

Registered Land Surveyor

DATE: OCTOBER 18TH, 2021COMPANY RIVERSIDE LAND SURVEYING LLC

TIE SKETCH:

- ☒ - SET BERNTSEN SNM-1 STEEL NAIL MARKER
- ☒ - SET BERNTSEN SSDR130 30" STAINLESS DRIVE-IN MONUMENT WITH 1-1/2" CAP
- ☒ - FOUND BERNTSEN ALUMINUM CAPPED MONUMENT



A-25

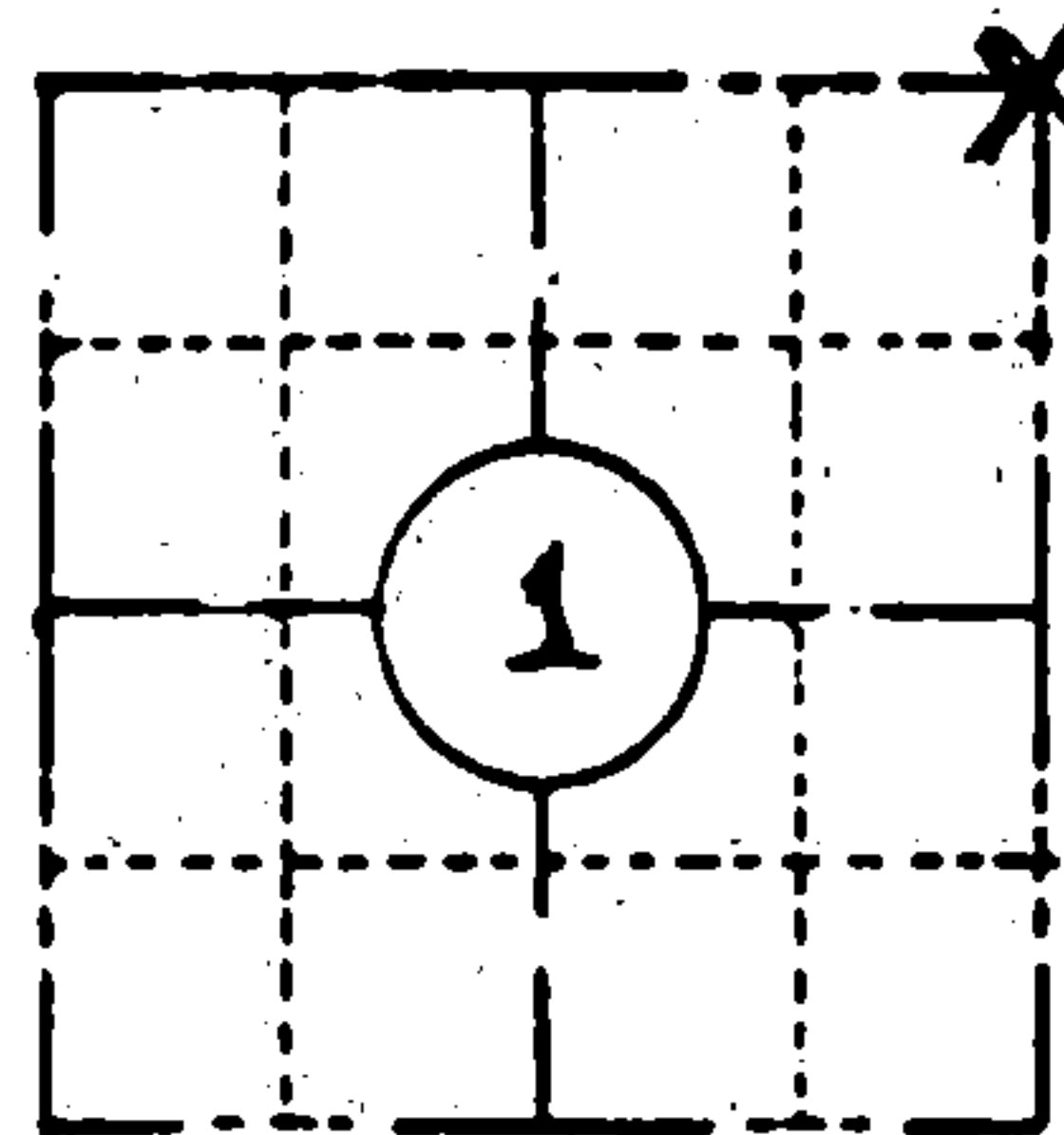
NO.

ORIGINAL ON FILE IN CO CLERK'S OFFICE
COPY HERE FOR REFERENCE

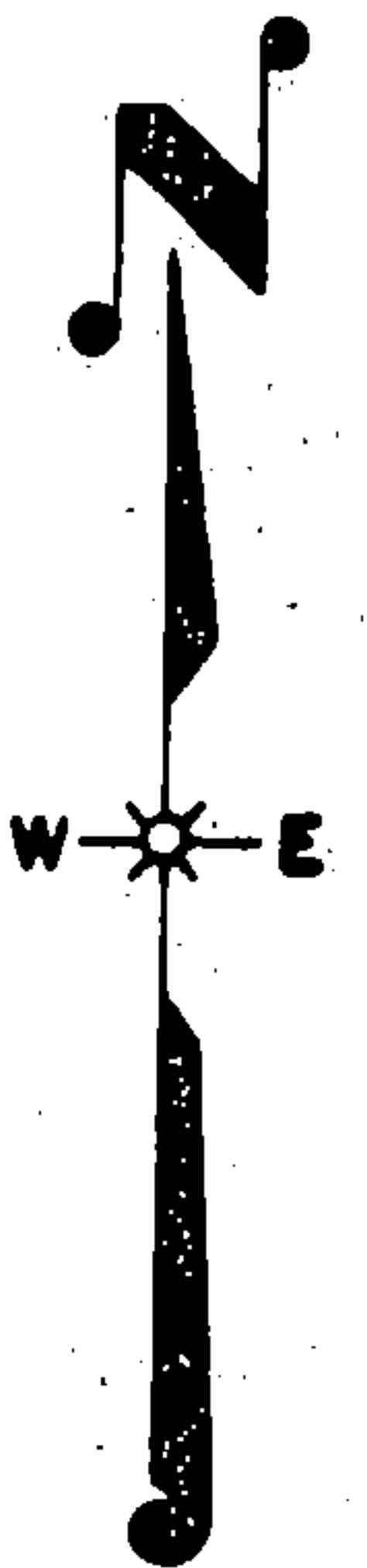
FIELD SURVEY NOTES
PRESERVATION OF LANDMARKS
(Pursuant to Section 59.635(7) Wisconsin Statutes
E-D-707-69

State of Wisconsin / Department of Transportation

COUNTY <i>FOREST</i>		
TOWN <i>FREEDOM, WABENO, LAONA</i>		
HIGHWAY <i>S.T.H. 32</i>		
SECTION <i>1</i>	TOWNSHIP <i>34 N</i>	RANGE <i>14 E</i>
TYPE OF LANDMARK <i>DE MAIL - AGREES WITH U.S.F.S. R.M.'s</i>		

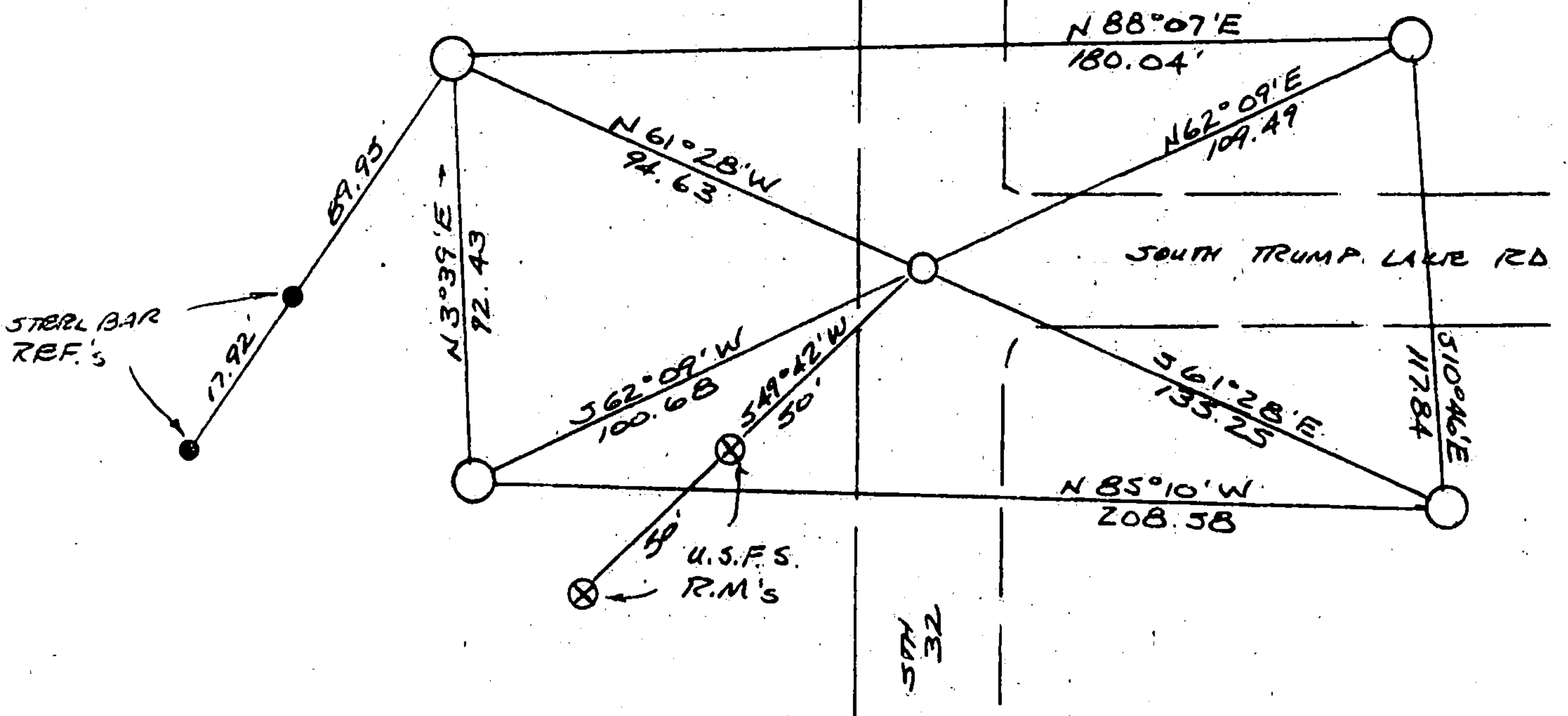


LOCATION SKETCH
(Location of landmark indicated by "x")



This space for copy of field notes or ties to the above described landmarks

ALL MONUMENTS ARE BRANTSEN MAG.
ALUMINUM MONUMENTS AND ARE STAMPED:
WITH "W.C." & DIST. TO CORNER.
BRGS ARE REFERENCE TO S.T.H. 32 Q



FILED UNDER PROJECT <i>9131-03-70</i>			COUNTY CLERK'S OFFICE COUNTY OF <i>Forest</i> WISCONSIN } 85	
DISTRICT OFFICE NUMBER <i>03-07</i>	CITY <i>RHINELANDER</i>	COUNTY <i>ONEIDA</i>	DATE RECEIVED FOR RECORD <i>11/20/85</i>	DATE COPY SENT TO COUNTY SURVEYOR <i>N/A</i>
LOCATED OR ESTABLISHED BY NAME <i>J.R. WALLIN under the direction</i> <i>of MICHAEL HESS 2nd Surveyor 500809</i> TITLE <i>SURVEY CREW CHIEF</i> DATE <i>5-16-85</i>			SIGNATURE OF COUNTY CLERK <i>Dora C. James</i>	