

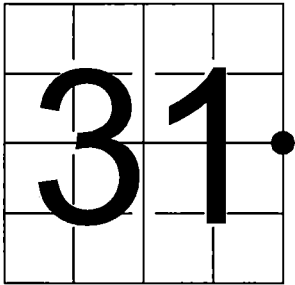
FILED ON:
12/10/2025 10:02 AM
CORTNEY BRITTEN CLEEREMAN
REGISTER OF DEEDS
FOREST COUNTY WI
PAGES: 1

U.S. PUBLIC LAND SURVEY
MONUMENT RECORD

NOTE: This form is intended and designed to fulfill all requirements of Wisconsin Administrative Code, Chapter A-E 7.08 U.S. Public Land Survey Monument Record (3) (a-i)

A-E 7.08(3)(a) Identity of corner:
East 1/4 Corner Section 31,
Township 35 North, Range 15 East
of the Fourth Principal Meridian,
Town of Wabeno, Forest County, Wisconsin

WISCRS - FOREST COUNTY
N: 534,461.131 USft (XXX,XXX.XXX)
E: 899,579.875 USft (XXX,XXX.XXX)
Datum: NAD83 (2011)
GNSS Method RTN
GNSS Control WISCORS VRS



The coordinate value shown has been verified by the average of two or more GPS observations at a markedly different time. Coordinates shown in parenthesis are previously published values.

A-E 7.08(3)(b)

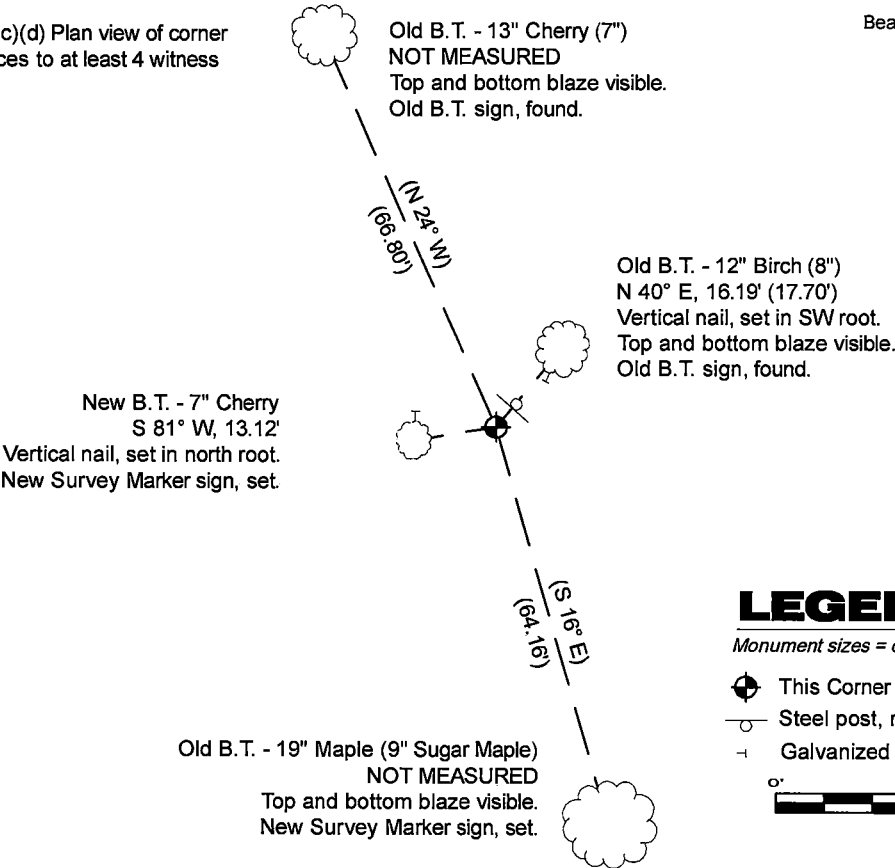
Original Surveyor: James McBride - June 10, 1859 to June 15, 1859
Elm 24 - N 71° E, 25 Links, Birch 16 - N 73° W, 42 Links

See previous U.S. Public Land Survey Monument Record - X5 - December 24, 1984 - Surveyor 1558 - Milo E. Stefan - THENCE:

- September 13, 1985 - Surveyor 1098 - William F. Kelly - indicates this position as "aluminum cap mon., found in place" on county record Map #351531-19850913.
- January 3, 1992 - Surveyor 1259 - Kim H. Pritzlaff - indicates this position as "2" aluminum monument with stamped cap" on county record Map #351532-19920103.
- November 01, 2005 - Surveyor 2467 - Zachary J. Stevens - indicates this position as "FND. 3.5" Alum cap" on county record Map #351531-20051101.
- October 01, 2021 - Surveyor 2958 - Jesse L. Roberge - indicates this position as "found 2in O.D. iron pipe with aluminum cap" on county record Map #351531-20211001.
- May 14, 2002 - Surveyor 2197 - Michael A. Trembl - indicates this position as "existing 2" dia. aluminum monument" on county record Map #351532-20020514.
- September 26, 2023 - Surveyor 1763 - Thomas A. Boetcher - indicates this position as "Forest County aluminum capped monument found in place" on county record Map #351531-20230926.

November 11, 2025 - I found a 2.4" diameter aluminum pipe monument with a 3.25" diameter aluminum cap stamped to identify the corner location. The monument is on high land, extends ±12" above grade, and is ±3" out of plumb leaning to the north(I shot the top of the monument). I also found 3 of Stefan's bearing trees alive and in good condition, and his steel sign post lying down under a fallen tree. I reset the steel sign post and established 1 new reference monuments as shown below.

A-E 7.08(3)(c)(d) Plan view of corner with references to at least 4 witness monuments.



Bearings listed to the nearest second are referenced to the: Wisconsin Coordinate Reference System, Forest County Zone. All other bearings are magnetic.

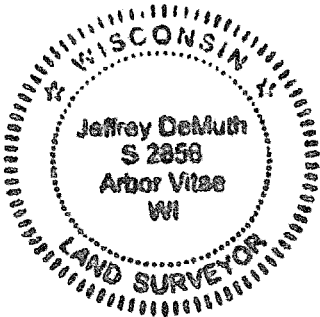
LEGEND

- Monument sizes = outside diameter measurements.
- ⊕ This Corner
 - Steel post, reset ±2.1 feet NE of corner
 - ⊕ Galvanized nail, set or nail found as shown
- 0' 30' 60'

A-E 7.08(3)(e) 1858 Surveyor set a post, 1984 Surveyor replaced a 2" iron pipe with a 2" x 30" aluminum monument, subsequent surveyors found similar, as did I in 2025.

A-E 7.08(3)(f) I accept this monument in good faith as a FOUND PERPETUATED LOCATION of the corner.
A-E 7.08(3)(g)(h) This corner was not determined through lost-corner-proportionate methods.

A-E 7.08(3)(i) I, Jeffrey L. DeMuth, Professional Land Surveyor No. S-2656, hereby certify that the corner location on this record was determined by me or under my direction and control, and that this U.S. Public Land Survey Monument Record is correct and complete to the best of my knowledge, and belief.



SIGNATURE

November 26, 2025

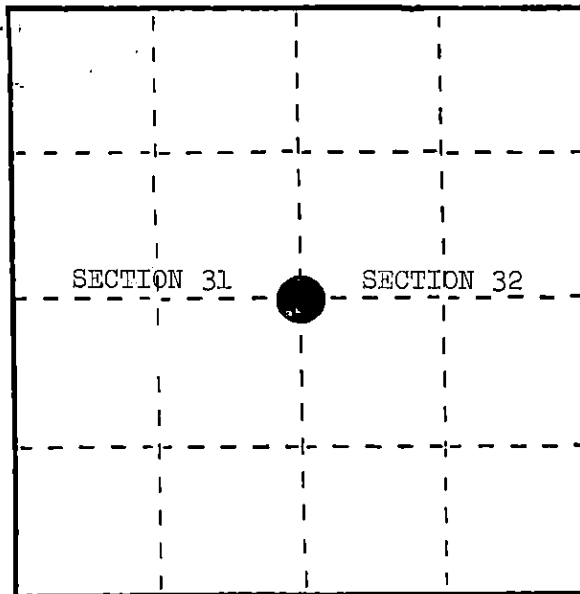
DATE

U. S. PUBLIC LAND SURVEY MONUMENT RECORD

INSTRUCTIONS: This record shall show the location of the corner and shall include all of the following nine elements (a through i).

- (a) Identify the corner by reference to the U.S. public land survey system.
 ○ = Corner monument restored.

Quarter corner to Sections 31 and 32, T.35N., R.15E.



- (b) Describe any record evidence, monument evidence, occupational evidence, testimonial evidence or any other material evidence you considered, and whether the monument was found or placed.

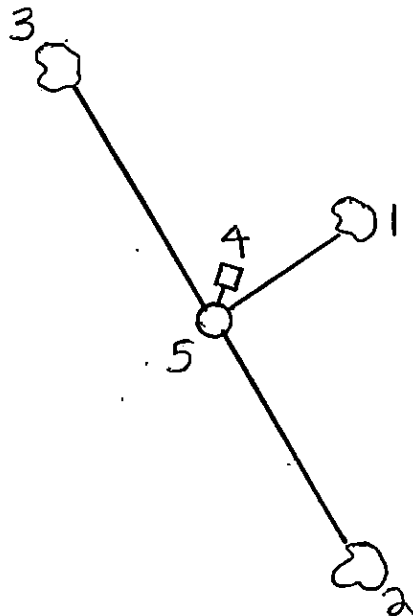
In 1859, James McBride set quarter section post with the following BTs: Elm, 24", N.71°E., 25 links; Birch, 16", N.73°W., 42 links.

August 30, 1984, Forest Service found a 2" iron pipe in rock pile with large white post alongside. Stump hole at N.73°W., 27.72'. Old fallen fence lines north, south, and west. Replaced pipe with a 2" x 30" aluminum monument stamped to identify the corner.

- (c) In the plan view drawing below, provide reference ties to at least 4 witness monuments, or, if the location is within a municipality, to at least 2 witness monuments. (Witness monuments shall be made of concrete, natural stone, iron or other equally durable material.)
 Describe witness monuments.

- (d) Show a plan view drawing depicting the relevant monuments and reference ties which is sufficient in detail to enable accurate relocation of the corner monument if the corner monument is disturbed. Indicate north.

1. White Birch, 8", N.40°E., 17.70'
2. Sugar Maple, 9", S.16°E., 64.16'
3. Black Cherry, 7", N.24°W., 66.80'
4. Steel Sign Post, 7', Northeast, 1.5'
5. 2" x 30" aluminum monument stamped to identify the corner.



REGISTER'S OFFICE }
 Forest County, Wis. }

Received for record this... 21st day
 of January... A. D., 1985 at
 11:00 o'clock... A. M. and

recorded in Vol. CORNER RESTORATIONS
 on page 5
 Paul Aschenbrenner
 REGISTER

(e) Describe any material discrepancy between the location of the corner as restored or reestablished and the location of that corner as previously restored or reestablished by distance and direction. Show the discrepancy on the plan view drawing under (d), above. Show the distances between the corner as previously restored or reestablished and (1) the corner as restored or reestablished, and (2) to at least 2 of the witness monuments shown on the drawing in (d), above.

(f) Was the corner restored through acceptance of (1) an obliterated evidence location, or, (2) a found perpetuated location?

(2) a found perpetuated location.

(g&h) Was the corner reestablished through lost corner proportionate methods? If so, show the method, including the directions and distances to other public land survey corners used as evidence or used for proportioning in determining the corner location?

No. \



(i) I, Milo E. Stefan
(type or print name) certify that the corner location shown on this record was determined by me or under my direction and control and that this U.S. Public Land Survey Monument Record is correct and complete to the best of my knowledge and belief.

Milo E. Stefan
Signature

12/24/84
Date