

Document Number

176967

REGISTER'S OFFICE
Forest County, Wis.
Received for record this 9th day
of October A.D., 2002 at
9:00 o'clock A.M. and recorded
in Vol. Corner Restoration
page J15
Kay Swanson, Deputy
Register of Deeds

U.S. PUBLIC LAND SURVEY MONUMENT RECORD

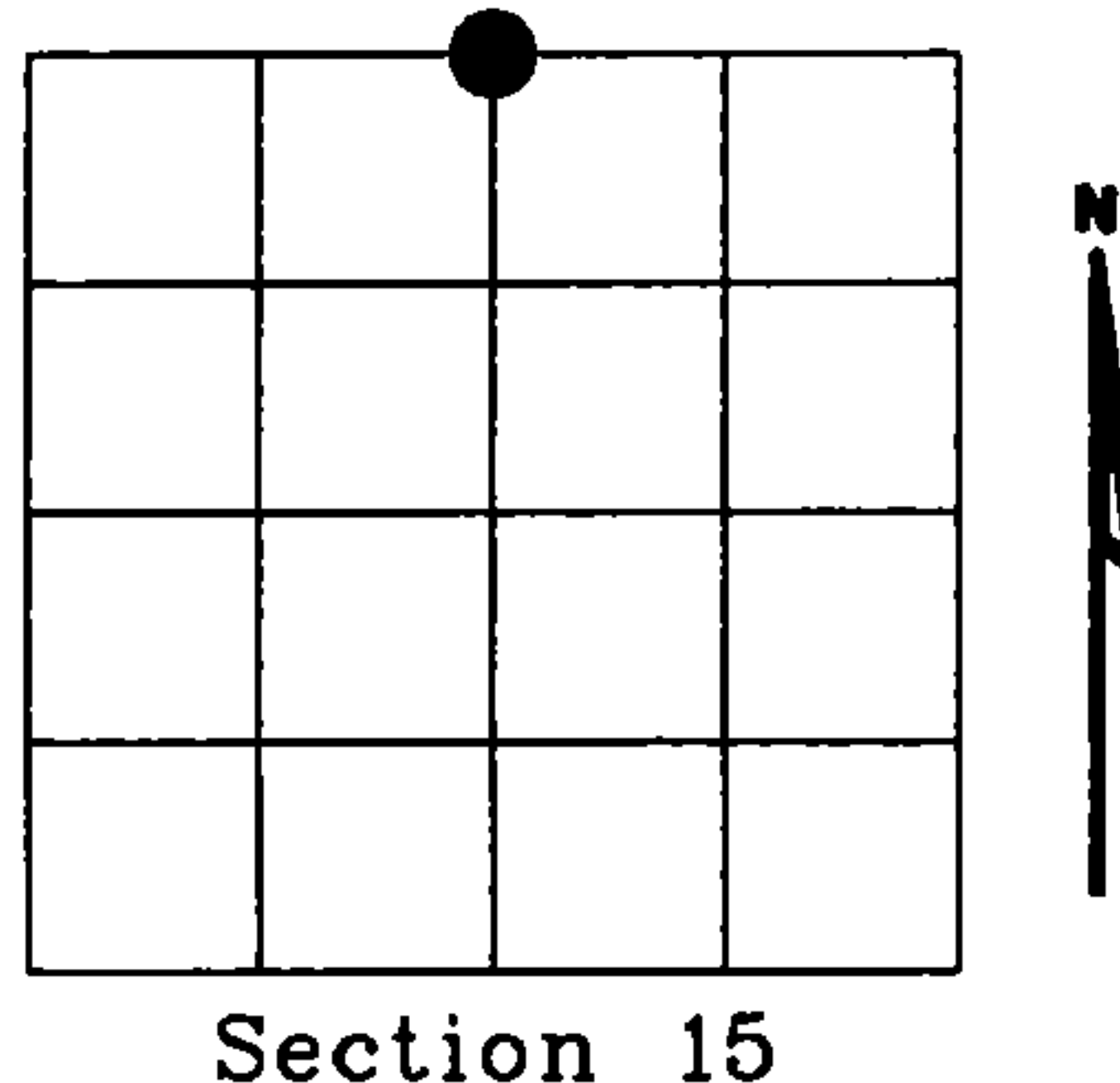
NOTE: This form is intended and designed to fulfill all requirements of Wisconsin Administrative Code, Chapter A-E 7.08 U.S. Public Land Survey Monument Record (3)(a)(b)(c)(d)(e)(f)(g)(h)(i). An additional sheet may be added if necessary to conform with said requirements.

(a) Corner location: Township 36 North

Range 12 East

Town of CRANDON

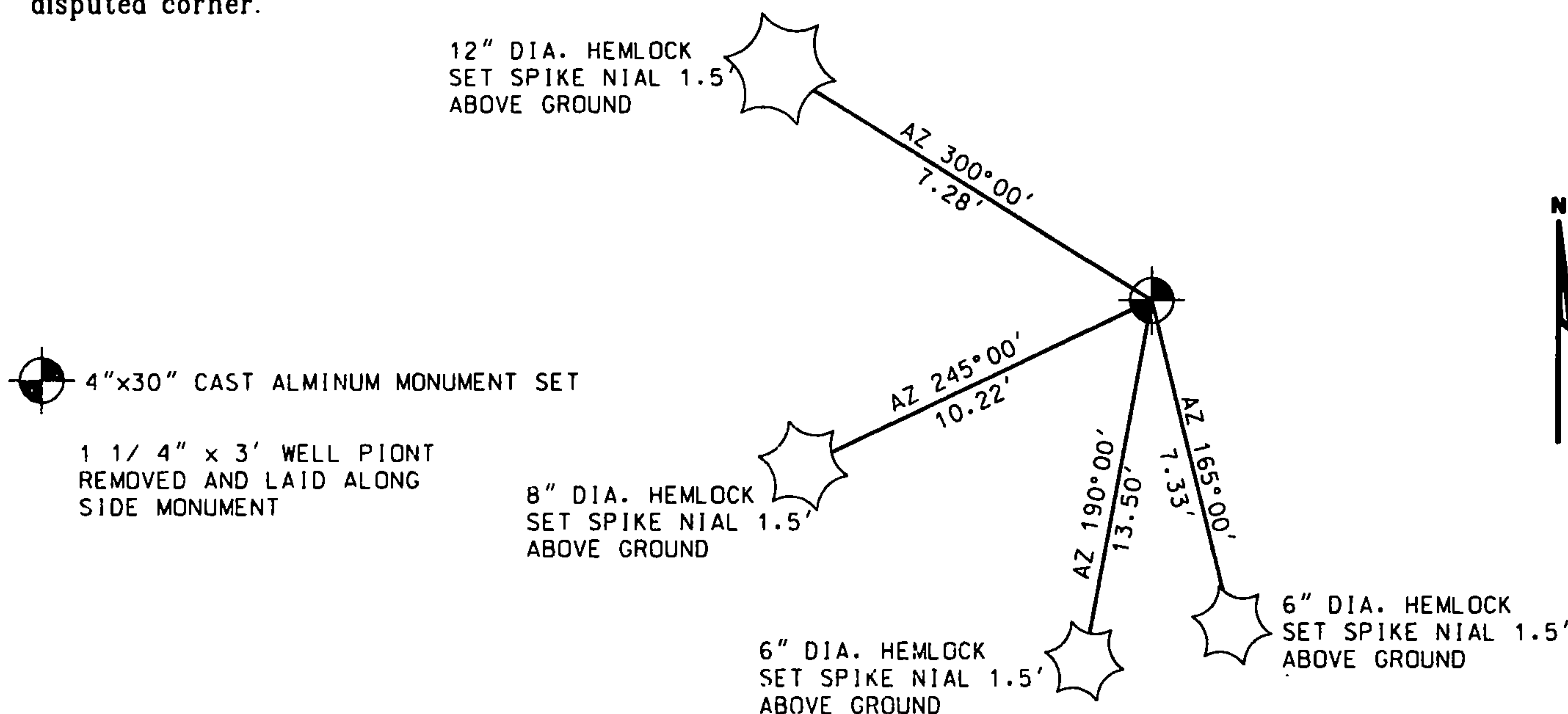
FOREST County, Wisconsin



(b)(f)(g)(h) Description of monument found at this corner and if it was accepted, state all evidence (material, testimonial, occupational, plats, records, other monuments) used as a basis for accepting. If not accepted or if nothing was found, state evidence used as basis for establishing location. If reestablished through lost corner proportionate methods, indicate all monuments, distances and directions used to establish. Indicate type of monument found or set and sign post.

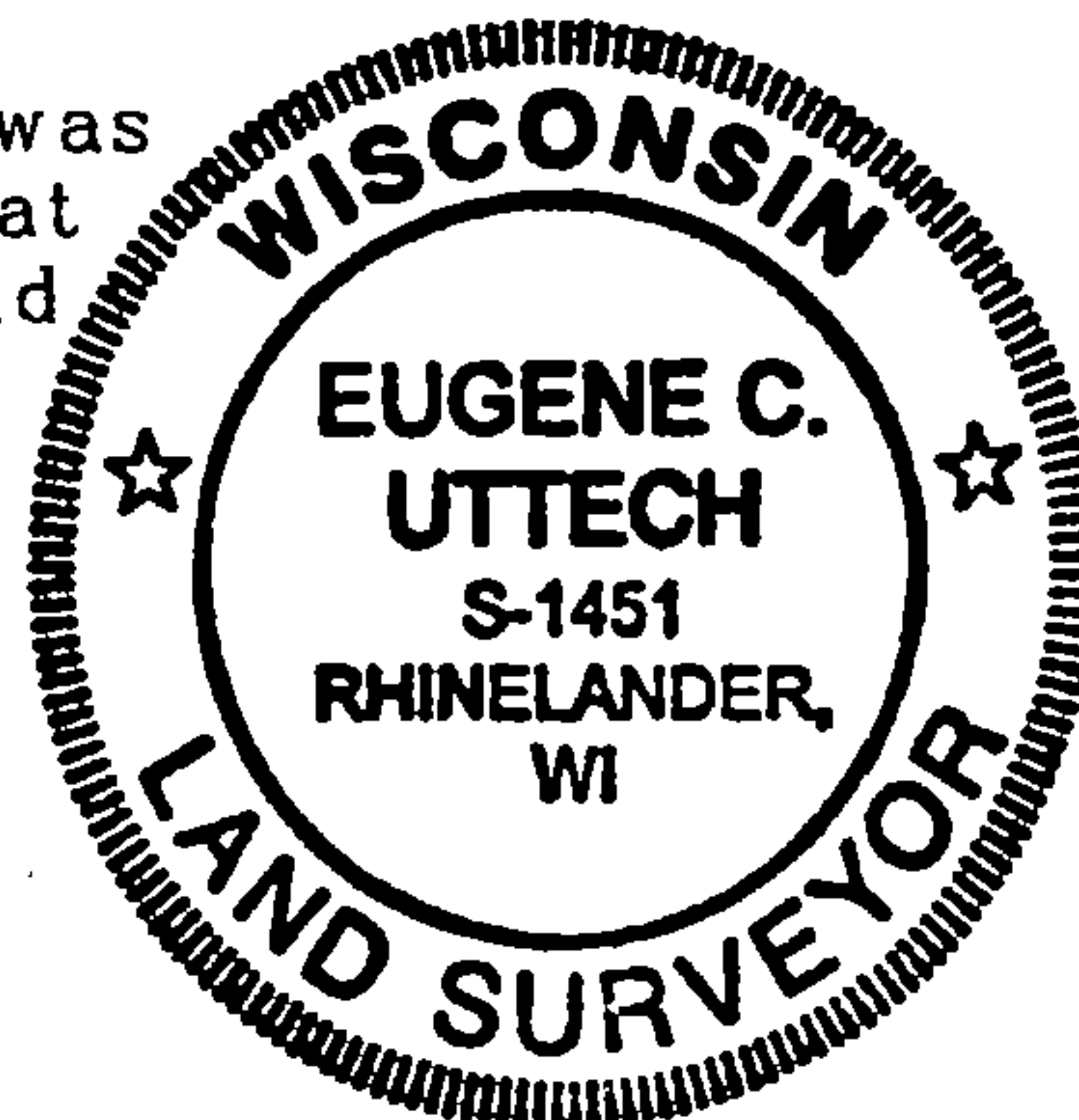
Researched records, Original corner established by Wm. E. Daugherty in August, 1859. Area had been logged and original bearing trees are gone. Neighboring owners, the Cottrell's showed us a 1 1/4" dia. iron pipe at this 1/4 corner. Could find no other information on this corner. I took measurements to existing evidence and accepted the iron pipe as the 1/4 corner and replace with a 4" x 30" standard county monument.

(c)(d)(e) Plan view of corner with ties to at least 4 witness monuments. If in disagreement with previously established corner, show the distances between the two corners and also indicate the ties to the disputed corner.



(i) I, Eugene C. Uttech, Registered Land Surveyor *S-1451, hereby certify that the corner location on this record was determined by me or under my direction and control and that this U.S. Public Land Survey Monument Record is correct and complete to the best of my knowledge and belief.

Eugene C. Uttech Sept. 27, 2002
Signature Date



Index No. J15

43612100020

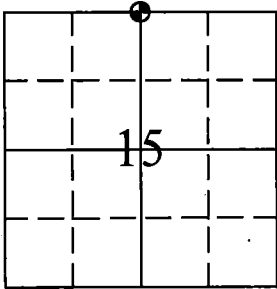
U.S. PUBLIC LAND SURVEY MONUMENTATION RECORD

(AS REQUIRED BY S. A-E 7.08, WI ADM. CODE)

CORNER: N 1/4 INDEX NUMBER: J-15
SECTION: 15 TOWNSHIP: 35N RANGE: 12E
TOWN/CITY/VILLAGE: TOWN OF NASHVILLE
COUNTY: FOREST STATE: WISCONSIN

History of original corner establishment and subsequent restorations and description of any record, monument, occupational, testimonial, or other evidence considered:

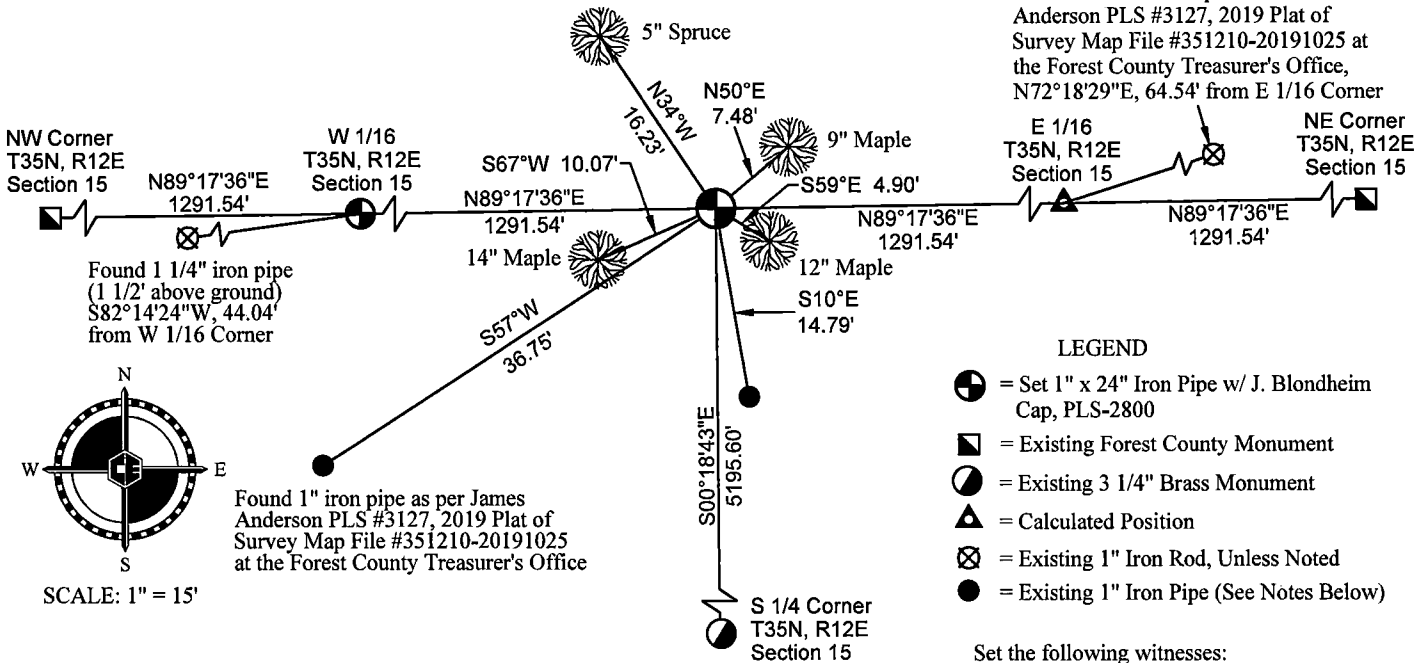
1865: James L. Nowlin Set Corner Post
8" Birch N4°E 37 links (24.42 feet)
20" Hemlock S11°W 30 links (19.80 feet)



● = CORNER LOCATION
Forest County Coordinates
(US Survey Feet)
N: 553496.65'
E: 817802.81'

CORNER WAS: (CHECK ALL THAT APPLY)

- ☐ Restored through acceptance of an obliterated location
- ☐ Restored through acceptance of a found perpetuated location
- ☐ Restored or reestablished in a location that differs from a previous restoration or reestablishment (include a plan view drawing and indicate what was set and/or found)
- ☒ Considered a lost corner and reestablished through lost corner proportionate methods (include a plan view drawing showing distances and directions to other public land survey corners used for proportioning and determining the corner location)



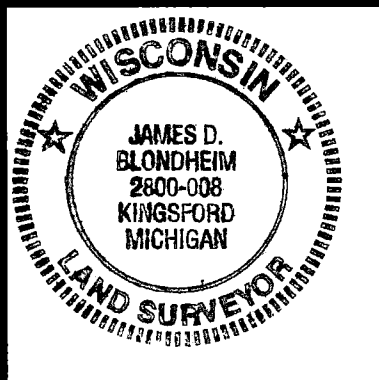
DESCRIBE THE MONUMENT AND ACCESSORIES USED TO PERPETUATE THE LOCATION OF THIS CORNER.
(Include a plan view drawing and indicate what was set and/or found)

2024: James D. Blondheim PLS S-2800
Research for corner showed that the original GLO records were the last information of record for this corner being set. In 2008, the BLM did a dependent resurvey and subdivision of this section, but this corner was not set in conjunction with that work. A Field search was unable to locate any remains of GLO witnesses. All of the 2008 BLM dimensions and section subdivision checked with our section subdivision. Given no evidence in the field, the corner was calculated by means of single proportionate measurement between the NW corner and NE corners of Section 15, falling midway and on line between the two corners.


Two 1" iron pipes were found being S57°11'54"W, 36.75 feet and S09°55'42"E, 14.79 feet from this proportionated position. There were no surveys of record indicating the origins of these two found iron pipes. James Anderson, PLS # 3127, called for the S57°11'54"W, 36.75 feet 1" iron pipe as the Section corner as per his 2019 Plat of Survey Map, File # 351210-20191025 in the Forest County Treasurer's office. The map states that there is a USPLS monument record on file with the County. The County was unable to find said document and had no records of it being recorded. CEC reached out to Mr. Anderson to discuss this corner, but have not received a reply at the time this USPLS Monument Record form was completed.

The calculated position matches the BLM 2008 dependent survey and is accepted as a careful and faithful reestablishment of the position of the original corner and 1" x 24" Iron Pipe w/ J. Blondheim cap, PLS-2800 set.

SIGNATURE: DATE: 10/7/2024



I, JAMES D. BLONDHEIM, P.L.S. S-2800, certify that the corner location shown on this above record was determined by me or under my direction and control and that this U.S. Public Land Survey Monument Record is correct and complete to the best of my knowledge and belief.

**COLEMAN ENGINEERING COMPANY**
IRON MOUNTAIN • IRONWOOD • GREEN BAY
885 Circle Drive, Iron Mountain, Michigan
www.coleman-engineering.com

DRAWN: DJA	FB #551, PG: 6	DATE: 10/7/2024	JOB NO. 240840
---------------	----------------	--------------------	-------------------

43512100020

J15