

**!Attention!**

This PLSS corner is in the process of being updated by Forest County. An updated Tie Sheet will be available for this corner soon.

Please contact Kayla at the Forest County Land Information Department for more information.

Contact Info:

715-478-1387 or [Kayla.L@co.forest.wi.us](mailto:Kayla.L@co.forest.wi.us)

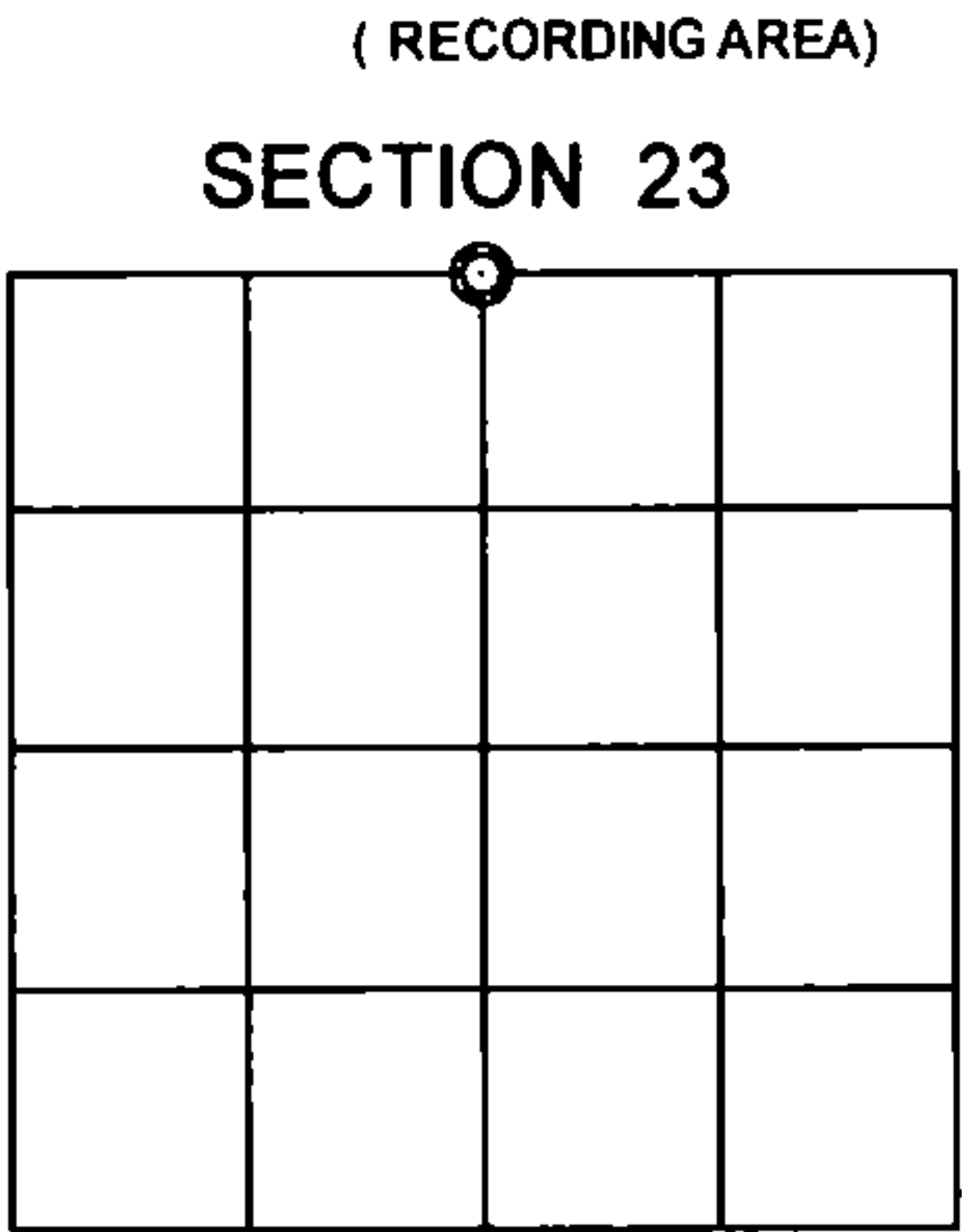
REGISTER'S OFFICE  
Forest County, Wis.  
Received for record this 15th day  
of February A.D., 2017 at  
2:30 o'clock P.M. and recorded  
in Vol. CORNER RESTORATION  
page N-19  
Catherine M. Bittner  
Register of Deeds

RECEIVED  
FEB 08 17  
CO. TREASURER

U.S. PUBLIC LAND SURVEY MONUMENT RECORD

Note: This form is intended and designed to fulfill all requirements of the Wisconsin Administrative Code, Chapter A-E 7.08 U.S. Public Land Monument Record (3)(a)(b)(c)(d)(e)(f)(g)(h)(i). An additional sheet may be added if necessary to conform with said requirements.

(a) CORNER LOCATION: COORDINATES  
North Quarter Corner of Section 23 North: 580019.642  
Township 36 North East: 823636.867  
Range 12 East Projection: WISCORS - Forest  
Town of Crandon Datum: NAD 1983(2011)  
County of Forest Method: RTK - Offset



(b) HISTORY OF ORIGINAL CORNER ESTABLISHMENT  
Original Surveyor: William E. Daugherty  
Date of Survey: Commenced August 4th, 1859  
Completed August 9th, 1859  
Original B.T.'S: Hemlock 10" N87E, 26 lks.  
Sugar 16" S57E, 13 lks.

(f)(g)(h) DESCRIPTION OF MONUMENT FOUND AT THIS CORNER AND IF IT WAS ACCEPTED, STATE ALL EVIDENCE (MATERIAL, TESTIMONIAL, OCCUPATIONAL, PLATS, RECORDS, OTHER MONUMENTS) USED AS A BASIS FOR ESTABLISHING LOCATION. IF NOT ACCEPTED OR IF NOTHING WAS FOUND, STATE EVIDENCE USED AS BASIS FOR ESTABLISHING LOCATION. IF REESTABLISHED THROUGH LOST CORNER PROPORTIONATE METHODS, INDICATE ALL MONUMENTS, DISTANCES AND DIRECTIONS USED TO ESTABLISH. INDICATE TYPE OF MONUMENT AND SIGN POST FOUND OR SET.

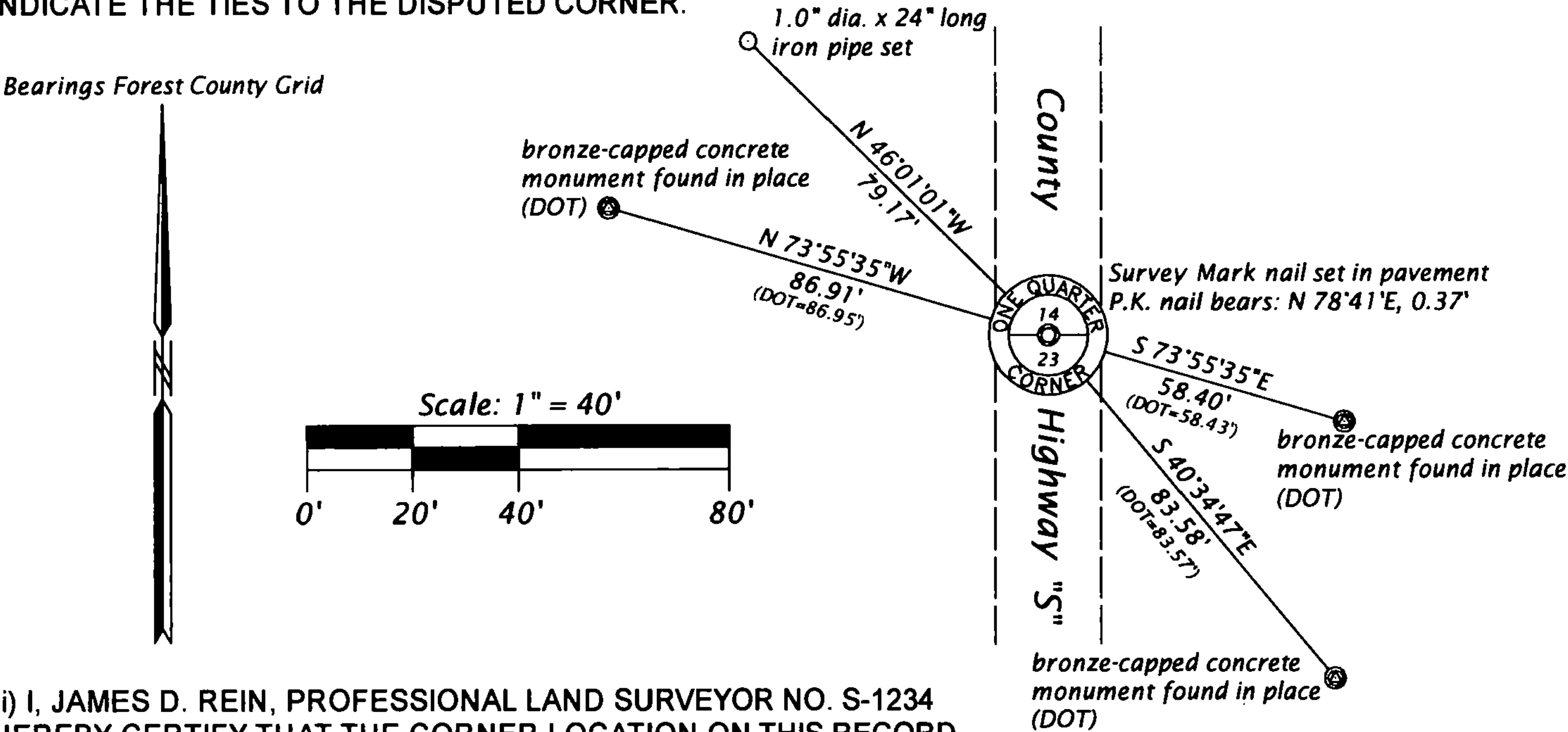
1984 - October 17, 1984, Jack Wallin (DOT) while working under the supervision of R. Bonneville (PLS), found a railroad spike in the pavement of County Highway "S" at the Quarter Corner position. He set four bronze-capped concrete monuments as witnesses: N 74°16'W, 86.95'; N 40°53'W, 87.80'; S 74°16'E, 58.43' and S 40°53'E, 83.57'. See DOT Preservation of Landmarks form, N-19, recorded May 21, 1985.

2005 - May 10, 2005, Michael A. Tremel, surveyed a parcel of land in the SE 1/4 of the NW 1/4, Section 23. He found a railroad spike at the Quarter Corner position in County Highway "S". See Forest County Certified Survey Map recorded in Volume 7 Certified Survey Maps, page 70 & 70A.

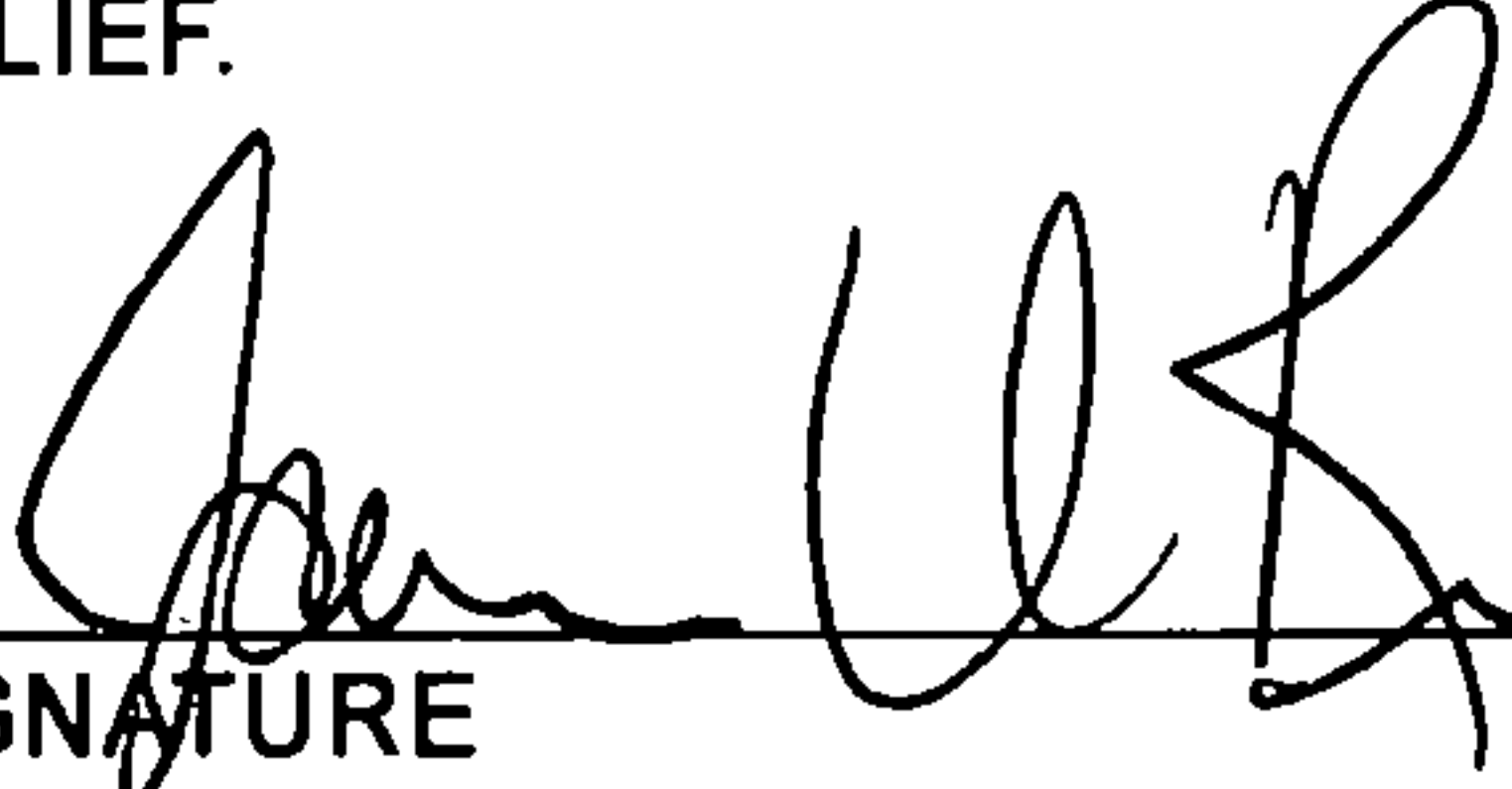
2014 - April 3, 2014, Charlie G. Brinkmeier, surveyed a parcel of land in the SW 1/4 of the SE 1/4, Section 14. He set a P.K. nail in the pavement of County Highway "S", 0.5' E. of centerline, for the Quarter Corner position. See Forest County Certified Survey Map recorded in Volume 9 Certified Survey Maps, page 38 & 38A.

2015 - August 25, 2015, James D. Rein, recovered the P.K. nail shown on Brinkmeier's CSM. The P.K. nail found did not fit harmoniously with the DOT reference monuments we recovered. We set a Berntsen Survey Mark nail for the Quarter Corner using the recovered DOT reference monuments. See below for reference ties.

(c)(d)(e) PLAN VIEW OF CORNER WITH TIES TO AT LEAST 4 WITNESS MONUMENTS. IF IN DISAGREEMENT WITH PREVIOUSLY ESTABLISHED CORNER, SHOW THE DISTANCE BETWEEN THE TWO CORNERS AND ALSO INDICATE THE TIES TO THE DISPUTED CORNER.



(i) I, JAMES D. REIN, PROFESSIONAL LAND SURVEYOR NO. S-1234  
HEREBY CERTIFY THAT THE CORNER LOCATION ON THIS RECORD  
WAS DETERMINED BY ME OR UNDER MY DIRECTION AND CONTROL  
AND THAT THIS U.S. PUBLIC LAND SURVEY MONUMENT RECORD IS  
CORRECT AND COMPLETE TO THE BEST OF MY KNOWLEDGE AND  
BELIEF.

SIGNATURE  DATE 2/03/17

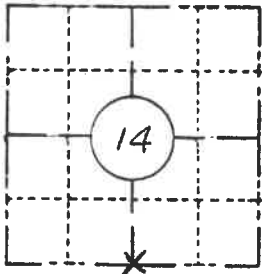
INDEX NO. \_\_\_\_\_

ORIGINAL ON FILE IN CO CLERK'S OFFICE  
COPY HERE FOR REFERENCE

FIELD SURVEY NOTES  
**PRESERVATION OF LANDMARKS**  
(Pursuant to Section 59.635(7) Wisconsin Statutes)

Wisconsin Department of Transportation  
E-D-707-87

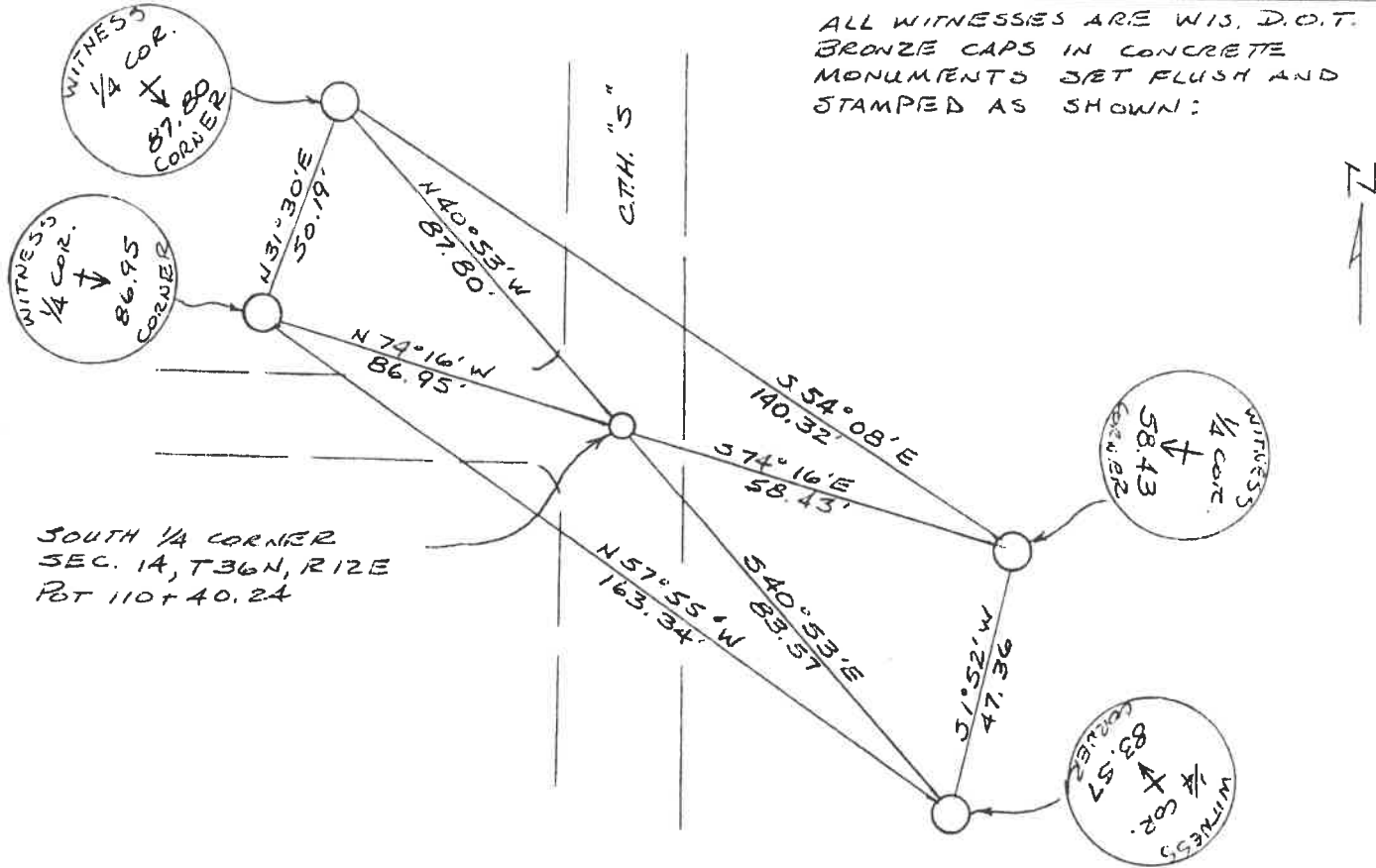
COUNTY FOREST		
TOWN CRANDON		
HIGHWAY CTH "S"		
SECTION 14	TOWNSHIP 36 N	RANGE 12 E
TYPE OF LANDMARK R.R. SPIKE		



**LOCATION SKETCH**  
(Location of landmark indicated by "x")



This space for copy of field notes or ties to the above described landmarks



ALL WITNESSES ARE WIS. D.O.T.  
BRONZE CAPS IN CONCRETE  
MONUMENTS SET FLUSH AND  
STAMPED AS SHOWN:

FILED UNDER PROJECT NUMBER 9339-04-70		
SHC DISTRICT OFFICE NUMBER 7	CITY RHINGLANDER	COUNTY ONEIDA
LOCATED OR ESTABLISHED BY NAME JACK WALLIN under the supervision of R. Bonnville RLS 132B TITLE SURVEY CREW CHIEF DATE 10-17-84		

COUNTY CLERK'S OFFICE COUNTY OF FOREST WISCONSIN } SS	
DATE RECEIVED FOR RECORD 5-21-85	DATE COPY SENT TO COUNTY SURVEYOR N/A
SIGNATURE OF COUNTY CLERK Dora C. James	