

**!Attention!**

This PLSS corner is in the process of being updated by Forest County. An updated Tie Sheet will be available for this corner soon.

Please contact Kayla at the Forest County Land Information Department for more information.

Contact Info:

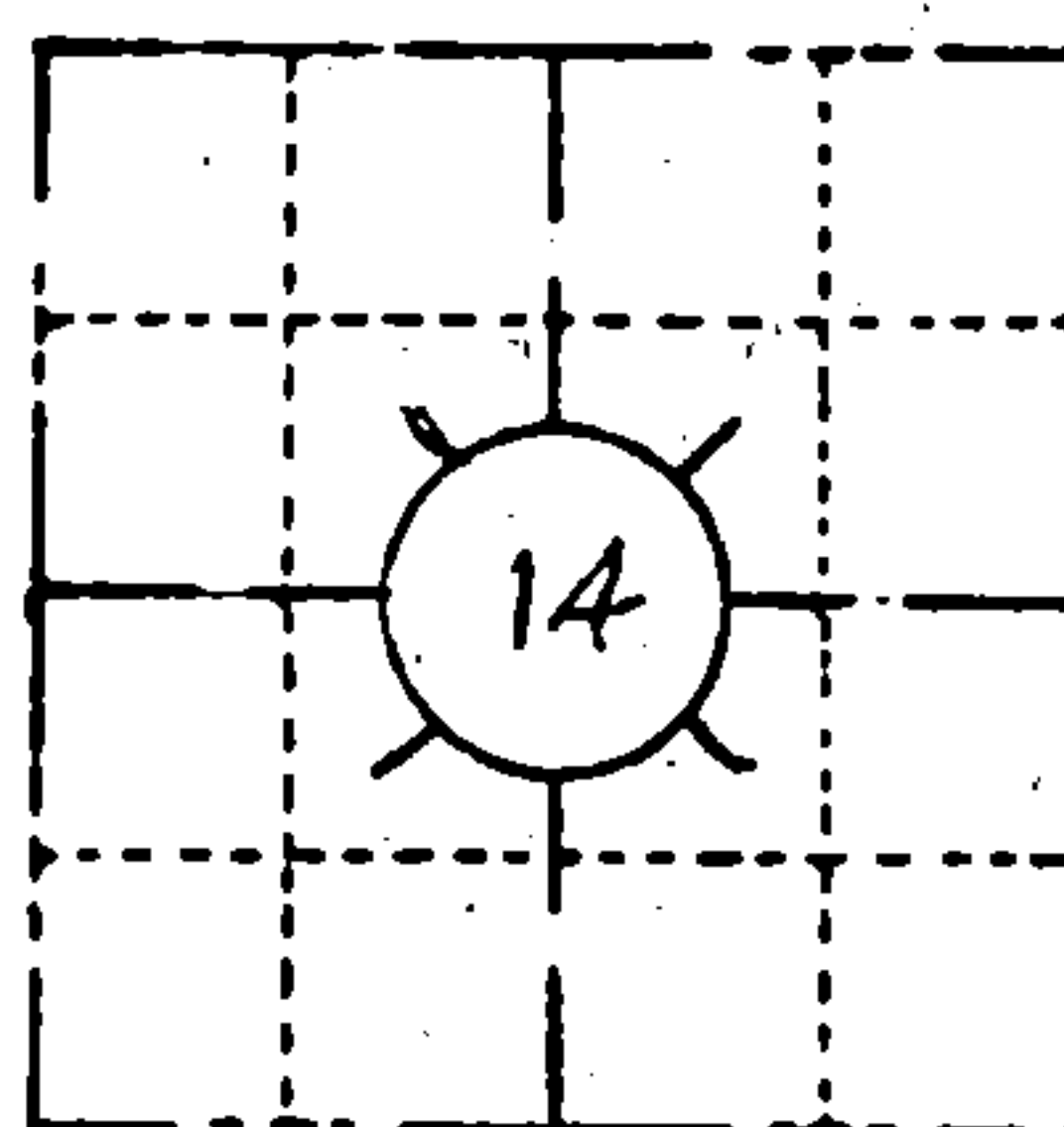
715-478-1387 or [Kayla.L@co.forest.wi.us](mailto:Kayla.L@co.forest.wi.us)

ORIGINAL ON FILE IN CO CLERK'S OFFICE  
COPY HERE FOR REFERENCE

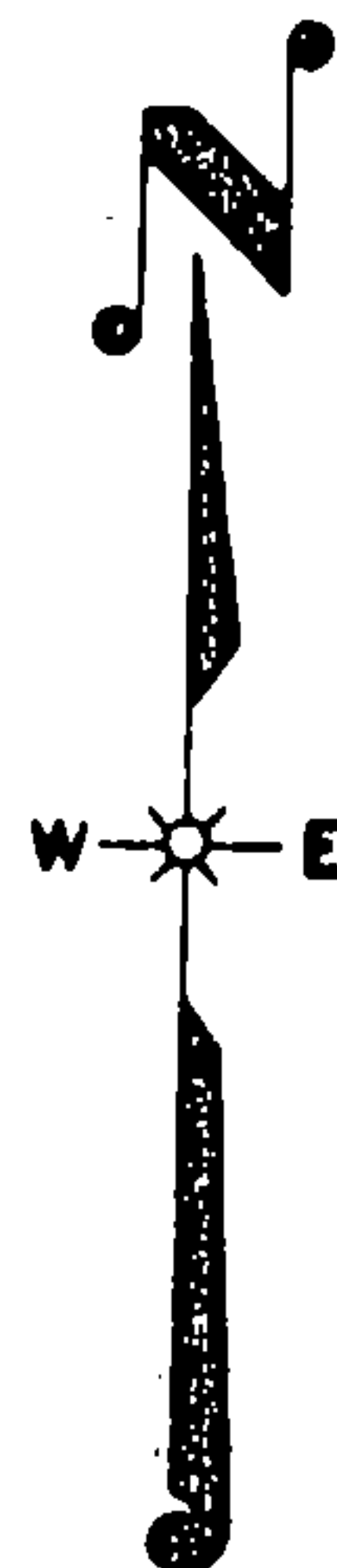
FIELD SURVEY NOTES  
PRESERVATION OF LANDMARKS  
(Pursuant to Section 59.635(7) Wisconsin Statutes)

Wisconsin Department of Transportation  
E-D-707.87

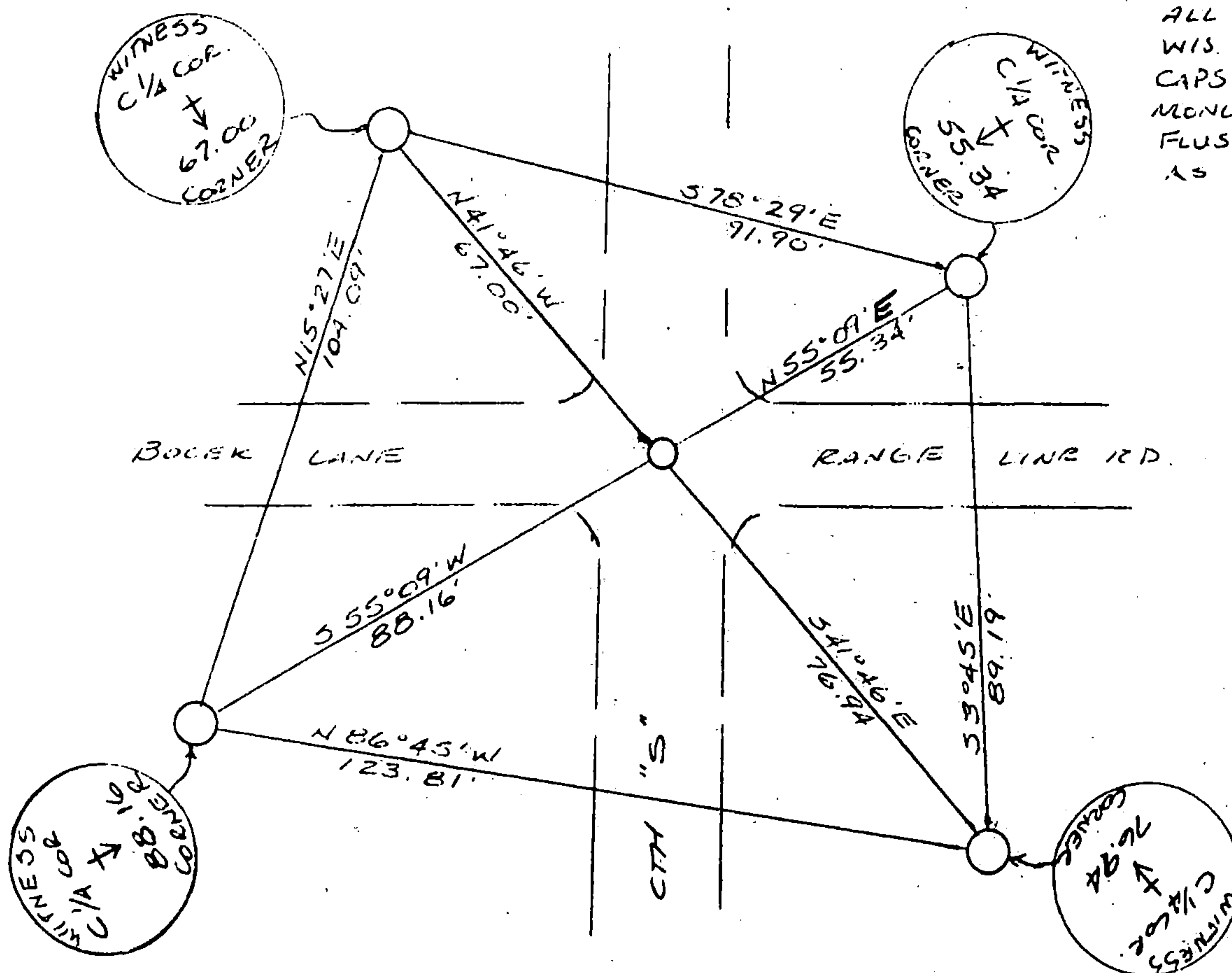
COUNTY FOREST		
TOWN CRANDON		
HIGHWAY C.T.H. "S"		
SECTION 14	TOWNSHIP 36 N	RANGE 12 E
TYPE OF LANDMARK PK NAIL		



LOCATION SKETCH  
(Location of landmark indicated by "x")



This space for copy of field notes or ties to the above described landmarks



ALL WITNESSES ARE  
WIS. D.O.T. BRONZE  
CAPS IN CONCRETE  
MONUMENTS SET  
FLUSH & STAMPED  
AS SHOWN.

FILED UNDER PROJECT NUMBER 9339-04-70			COUNTY CLERK'S OFFICE COUNTY OF FOREST WISCONSIN } SS	
SHC DISTRICT OFFICE NUMBER 7	CITY RHINELANDER	COUNTY ONEIDA	DATE RECEIVED FOR RECORD 5-21-85	DATE COPY SENT TO COUNTY SURVEYOR N/A
LOCATED OR ESTABLISHED BY NAME JACK WALLIN UNDER THE SUPERVISION OF R. BONNEVILLE RLS 1328 TITLE SURVEY CREW CHIEF DATE 10-17-84			SIGNATURE OF COUNTY CLERK Dora C. James	